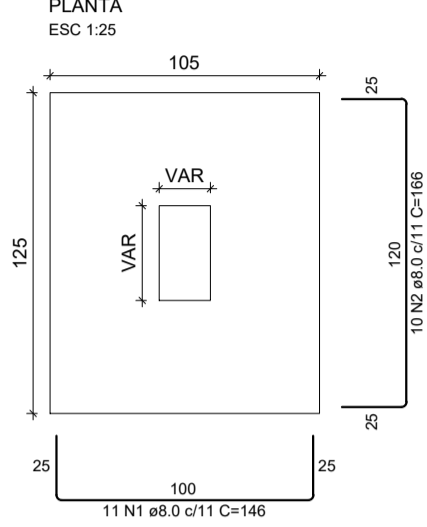
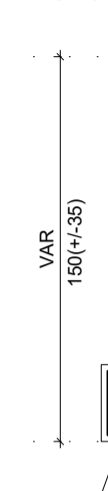


S6=S24=S28=S31=S34=S37=S41=S46

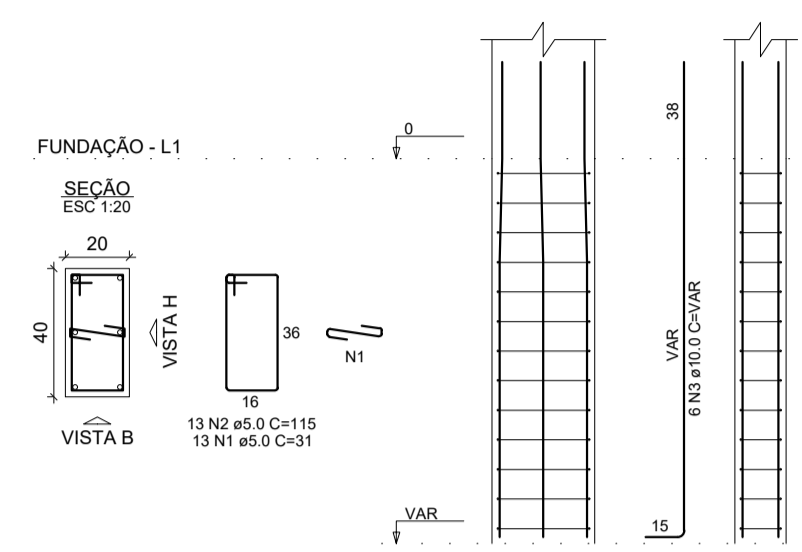


Solo com capacidade de suporte > 1.50 kgf/cm<sup>2</sup>  
Solo compactado sobre a sapata  
peso específico > 1600.00 kg/m<sup>3</sup>

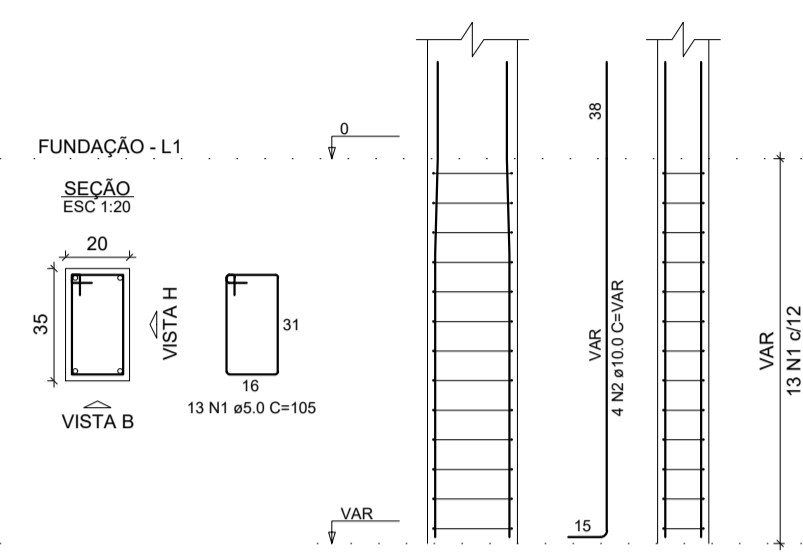
CORTE ESC 1:25



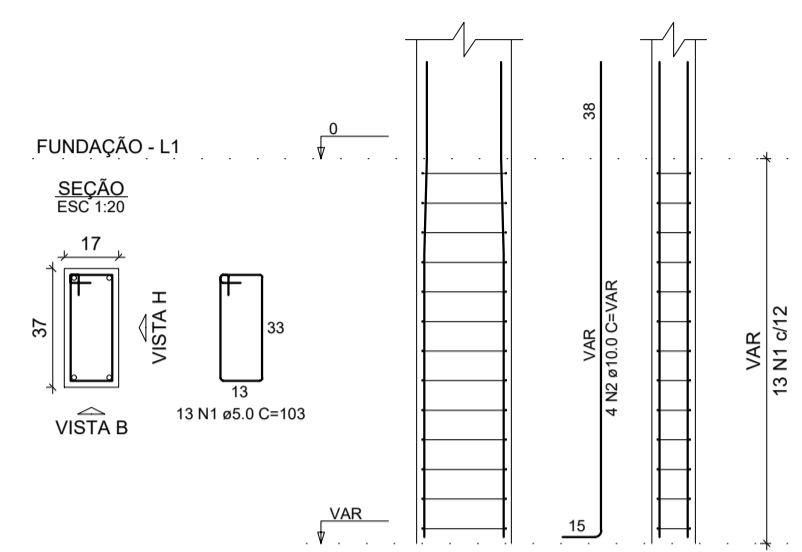
P24



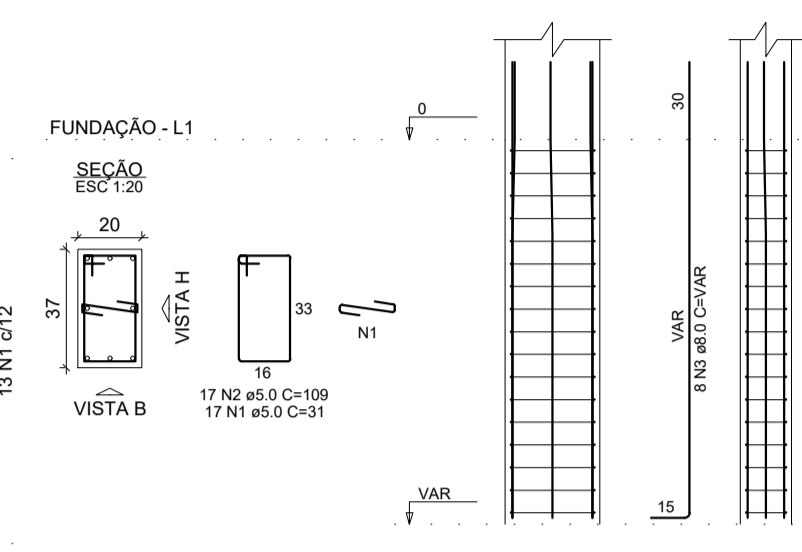
P28=P31



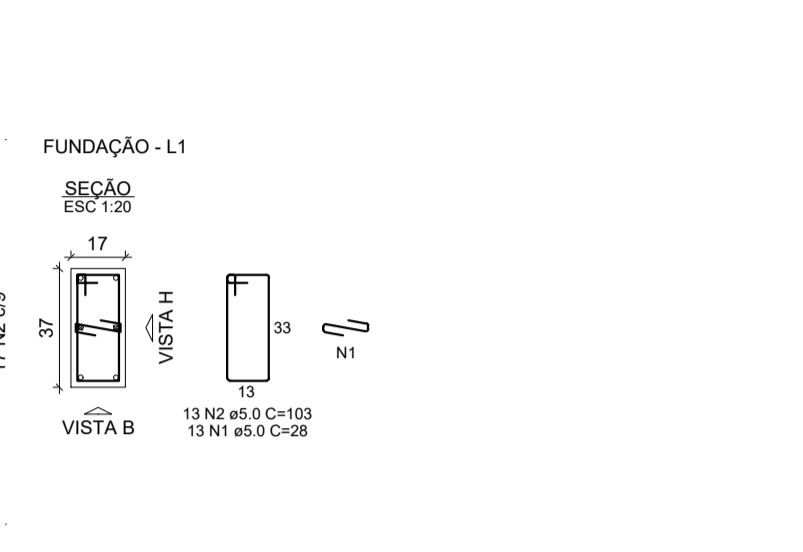
P34=P37



P41



P46



RELAÇÃO DO AÇO

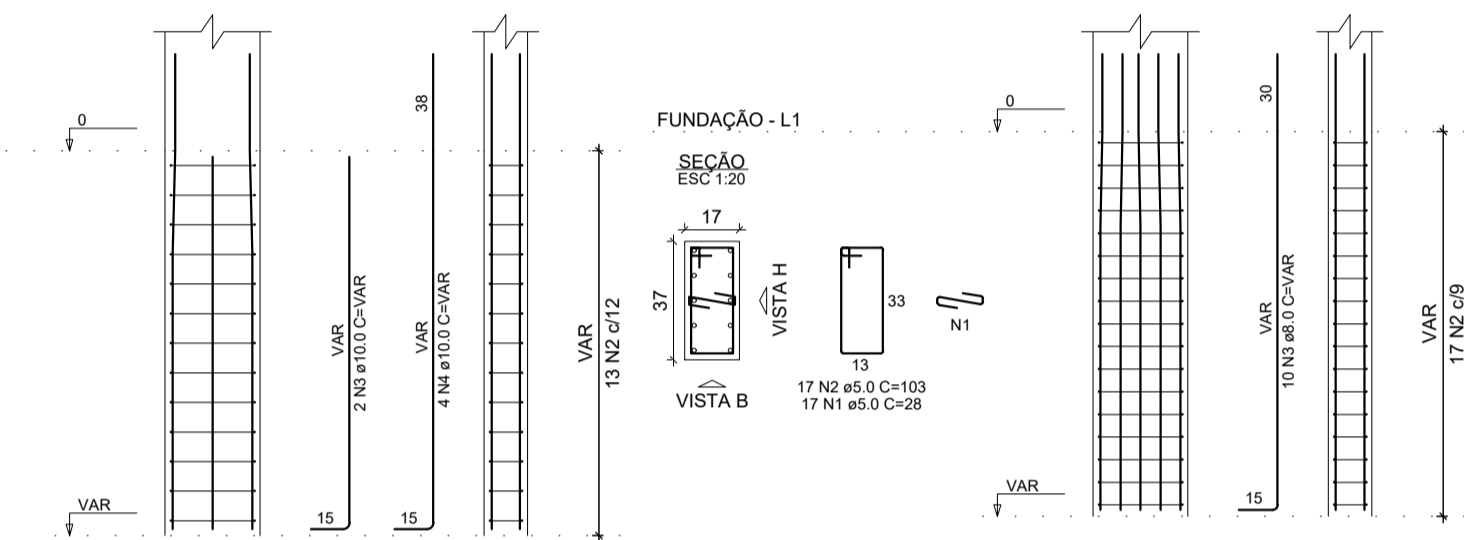
ELEMENTO	AÇO	N	DIAM (mm)	QUANT	C.UNIT (cm)	C.TOTAL (cm)
P6	CA60	2	5.0	17	28	476
	CAS0	2	8.0	17	103	1751
P24	CA60	1	5.0	10	VAR	403
	CAS0	1	5.0	13	31	403
2xP28	CA60	2	5.0	13	115	465
	CAS0	2	10.0	6	VAR	1495
2xP34	CA60	1	5.0	26	103	2678
	CAS0	2	10.0	8	VAR	2078
P41	CA60	1	5.0	17	31	527
	CAS0	2	5.0	17	109	1853
P46	CA60	5	8.0	8	VAR	328
	CAS0	1	5.0	13	28	364
8xS41	CA60	2	5.0	13	103	1338
	CAS0	4	10.0	4	VAR	12943
	CA60	2	8.0	80	168	13280

RESUMO DO AÇO

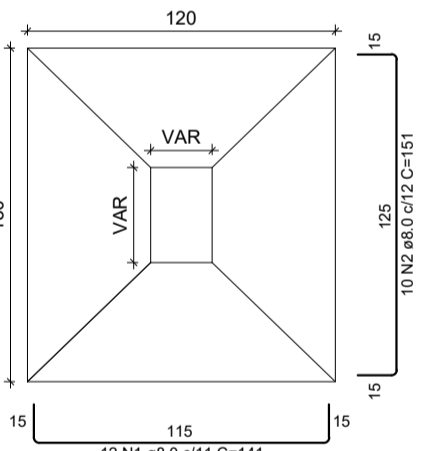
AÇO	DIAM (mm)	C.TOTAL (m)	PESO + 10% (kg)
CAS0	8.0	296.7	128.3
CA60	5.0	54.8	37.2
PESO TOTAL (kg)			165.5
CAS0	165.6		23.1
CA60	23.1		

Volume de concreto (C-25) = 3.97 m<sup>3</sup>  
Área de forma = 24.33 m<sup>2</sup>

P6

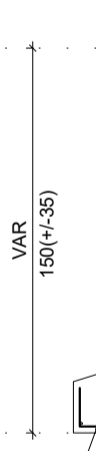


S21=S22=S25=S26=S39

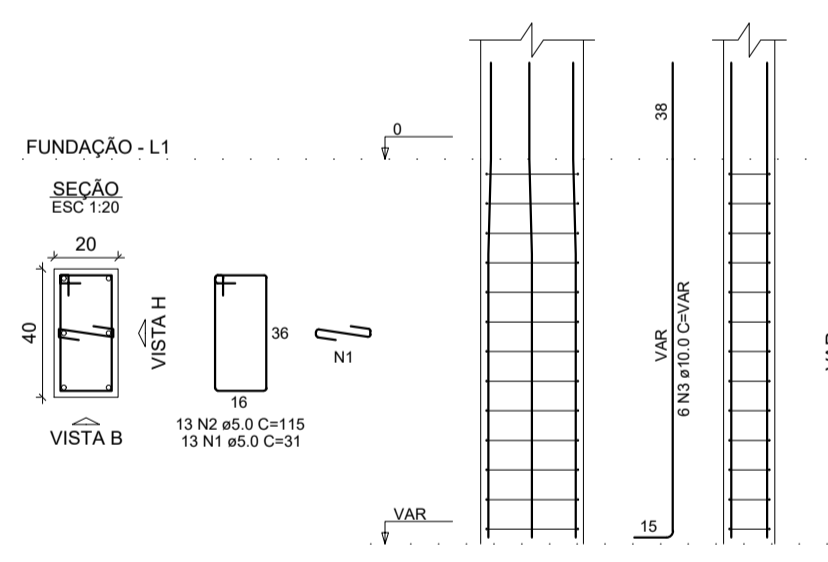


Solo com capacidade de suporte > 1.50 kgf/cm<sup>2</sup>  
Solo compactado sobre a sapata  
peso específico > 1600.00 kg/m<sup>3</sup>

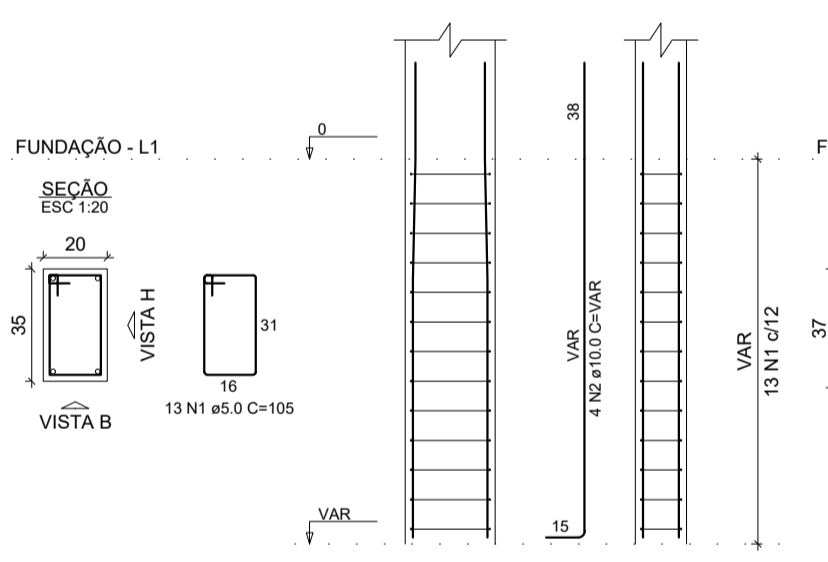
CORTE ESC 1:25



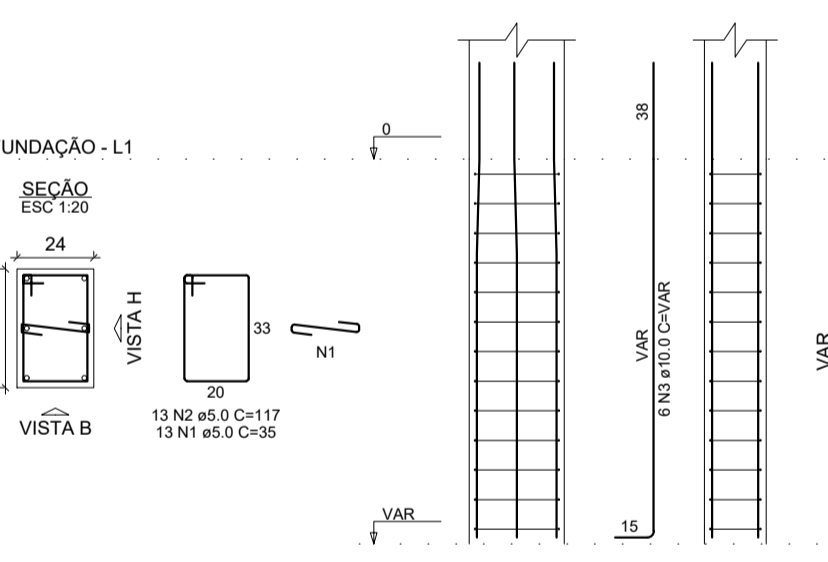
P21



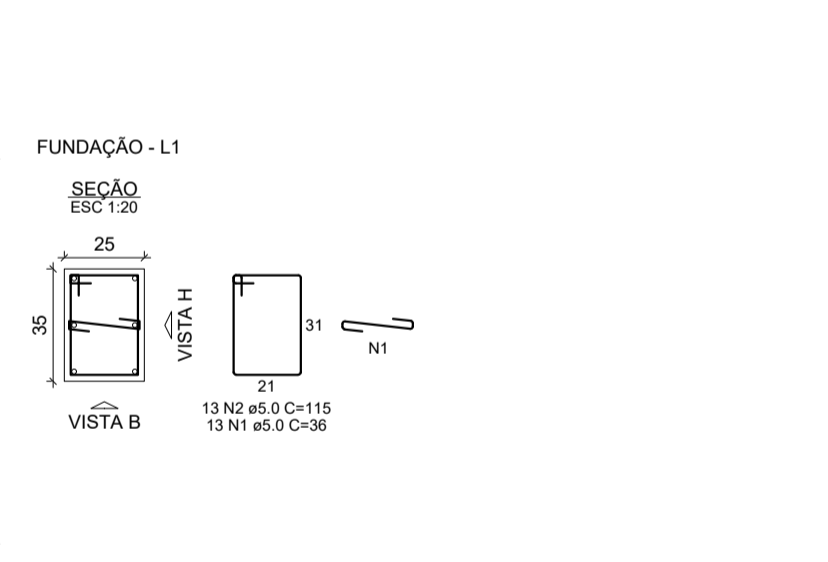
P22



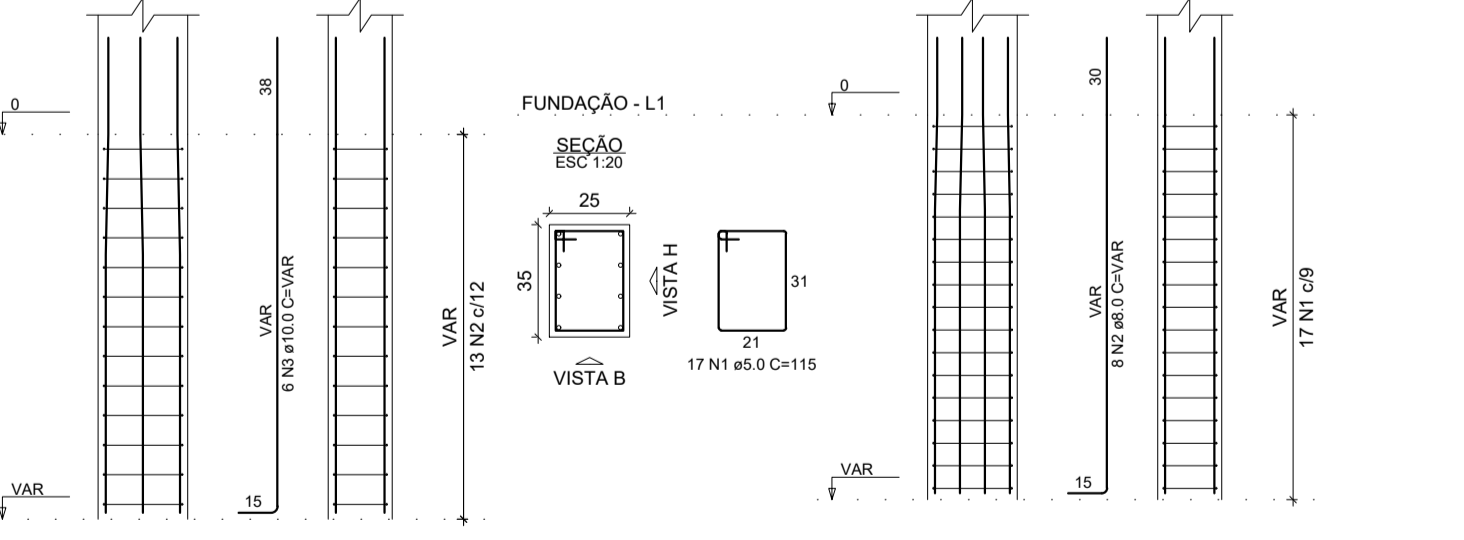
P25



P26



P39



RELAÇÃO DO AÇO

ELEMENTO	AÇO	N	DIAM (mm)	QUANT	C.UNIT (cm)	C.TOTAL (cm)
P21	CA60	1	5.0	13	31	403
	CAS0	2	5.0	13	115	1495
P22	CA60	1	5.0	13	105	1365
	CAS0	2	10.0	4	VAR	1495
P25	CA60	1	5.0	13	117	1521
	CAS0	2	10.0	16	VAR	1521
P26	CA60	1	5.0	13	115	1495
	CAS0	2	10.0	6	VAR	1495
P39	CA60	2	5.0	17	115	1955
	CAS0	2	8.0	8	VAR	1495
8xS25	CA60	2	8.0	60	141	3660
	CAS0	2	8.0	50	151	7550

RESUMO DO AÇO

AÇO	DIAM (mm)	C.TOTAL (m)	PESO + 10% (kg)
CAS0	8.0	175.4	76.1
CA60	5.0	43.8	29.7
PESO TOTAL (kg)			105.8
CAS0	105.8		15.5
CA60	15.5		

Volume de concreto (C-25) = 2.69 m<sup>3</sup>  
Área de forma = 13.88 m<sup>2</sup>



**PREFEITURA MUNICIPAL DE MURIAÉ**  
**SECRETARIA MUNICIPAL DE OBRAS PÚBLICAS**  
**PROJETO ESTRUTURAL CRECHE BOM PASTOR**

PROJETO DE SAPATAS 06

PREFEITURA DE MURIAÉ / CNPJ: 17.947.581/0001-76	DESCRIÇÃO: PROJETO ESTRUTURAL PARA CONSTRUÇÃO DE UMA CRECHE NO DISTRITO BOM PASTOR DE MURIAÉ-MG
PREFEITO IOANNIS KONSTANTINOS GRAMMATIKOPOULOS	LOCAL: RUA ABÍLIO JOSÉ FRITZ - DISTRITO DO BOM PASTOR - MURIAÉ - MG
SECRETARIA DE OBRAS PÚBLICAS:	ARQUIVO: Projeto fundação 6.DWG
CARLOS MAGNO DE OLIVEIRA	
R. T. PROJETO:	ESC. INDICADAS
LEONARDO DA SILVA CREA RJ 2017/103206D	DATA: ABRIL / 2020