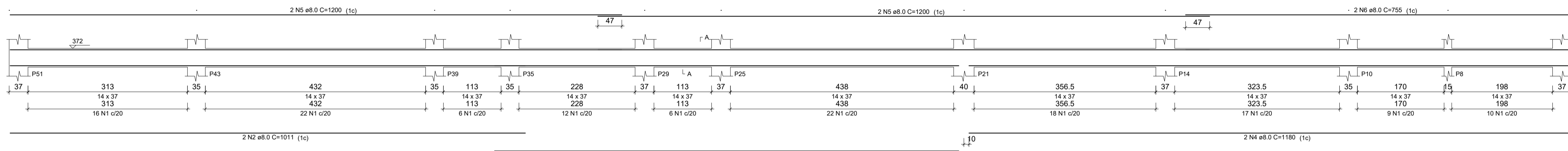
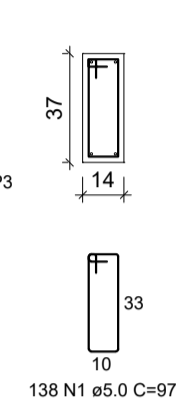


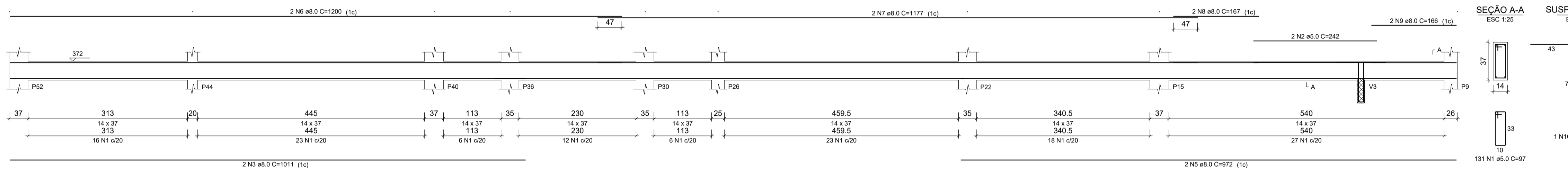
**V24**  
ESC 1:50



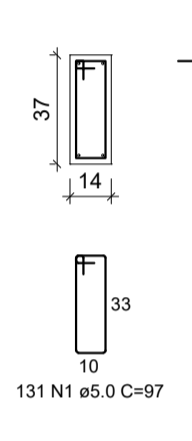
**SEÇÃO A-A**  
ESC 1:25



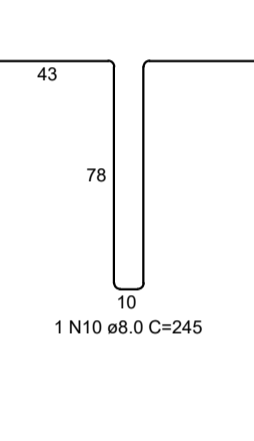
**V25**  
ESC 1:50



**SEÇÃO A-A**  
ESC 1:25



**SUSPENSÃO V3**  
ESC 1:25



RELAÇÃO DO AÇO

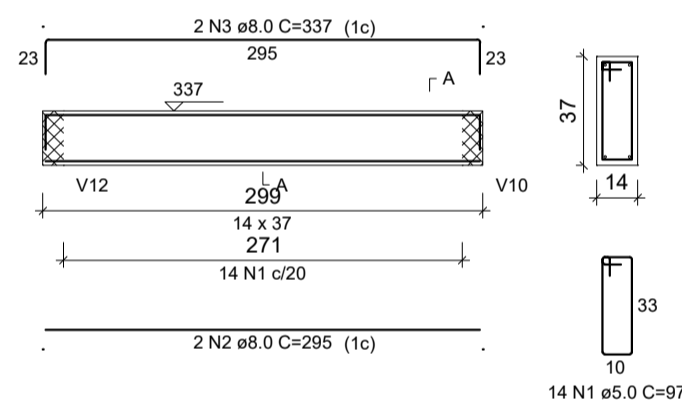
ELEMENTO	AÇO	N	DIAM (mm)	QUANT	C LINT (cm)	C TOTAL (cm)
V24	CA80	1	5.0	138	97	13386
	CA50	2	8.0	2	1011	2022
	CA50	3	8.0	2	911	1822
	CA50	4	8.0	2	1180	2360
	CA50	5	8.0	4	1200	4800
	CA50	6	8.0	2	755	1510
	CA80	1	5.0	87	97	12707
	CA80	2	5.0	2	242	484
	CA80	3	8.0	2	1011	2022
	CA80	4	8.0	2	920	1840
	CA80	5	8.0	2	972	1944
	CA80	6	8.0	2	1000	2000
	CA80	7	8.0	2	1177	2354
	CA80	8	8.0	2	1166	2332
	CA80	9	8.0	2	988	1976
	CA80	10	8.0	1	245	245
	CA80	1	5.0	14	97	1358
	CA80	2	8.0	2	295	590
	CA80	3	8.0	2	337	674
	CA80	1	5.0	11	97	1067
	CA80	2	8.0	2	244	488
	CA80	3	8.0	2	286	572
	CA80	1	5.0	14	97	1358
	CA80	2	8.0	2	346	692
	CA80	3	8.0	2	388	776
	CA80	1	5.0	7	97	679
	CA80	2	8.0	2	164	328
	CA80	3	8.0	2	228	456
	CA80	1	5.0	144	97	13968
	CA80	2	5.0	2	225	450
	CA80	3	5.0	2	260	520
	CA80	4	8.0	2	1008	2016
	CA80	5	8.0	2	920	1840
	CA80	6	8.0	2	1195	2390
	CA80	7	8.0	2	574	1148
	CA80	8	8.0	2	650	1300
	CA80	9	8.0	2	1000	2000
	CA80	10	8.0	2	253	506
	CA80	1	5.0	20	103	2060
	CA80	2	8.0	2	382	764
	CA80	3	8.0	2	418	836
	CA80	1	5.0	10	103	1030
	CA80	2	8.0	2	208	416
	CA80	3	8.0	2	252	504

RESUMO DO AÇO

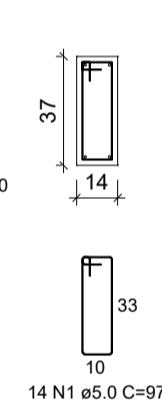
AÇO	DIAM (mm)	C TOTAL (m)	PESO + 10% (kg)
CA50	8.0	427.6	185.6
CA80	5.0	491.3	83.3
PESO TOTAL (kg)			268.9
CA50			185.6
CA80			83.3

Volume de concreto (C-25) = 5.58 m³  
Área de forma = 93.91 m²

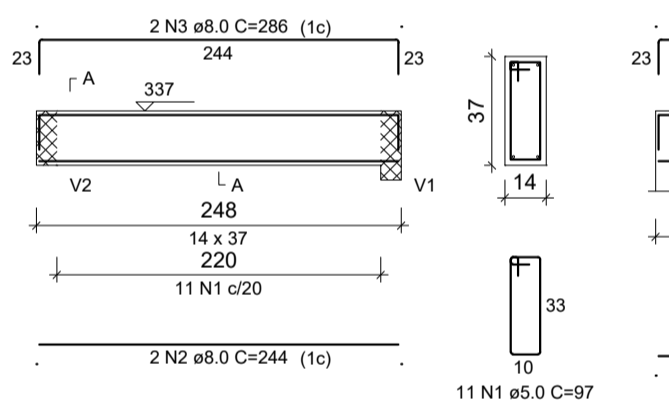
**V26**  
ESC 1:50



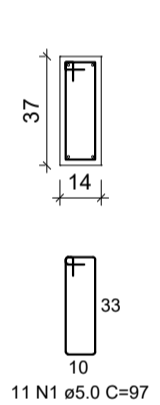
**SEÇÃO A-A**  
ESC 1:25



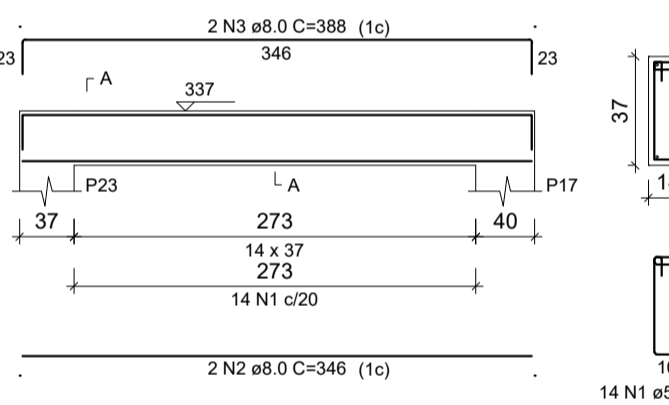
**V27**  
ESC 1:50



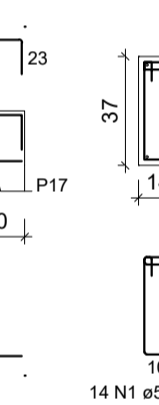
**SEÇÃO A-A**  
ESC 1:25



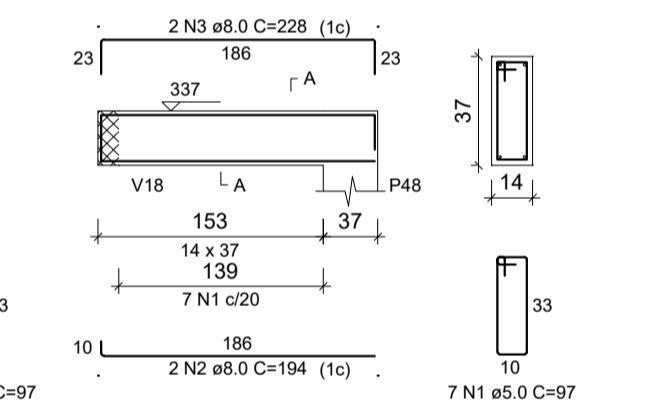
**V28**  
ESC 1:50



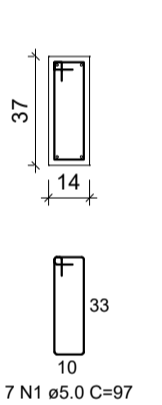
**SEÇÃO A-A**  
ESC 1:25



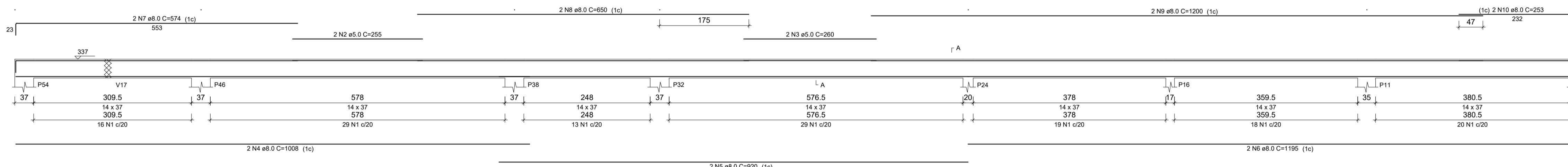
**V29**  
ESC 1:50



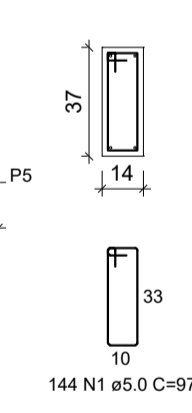
**SEÇÃO A-A**  
ESC 1:25



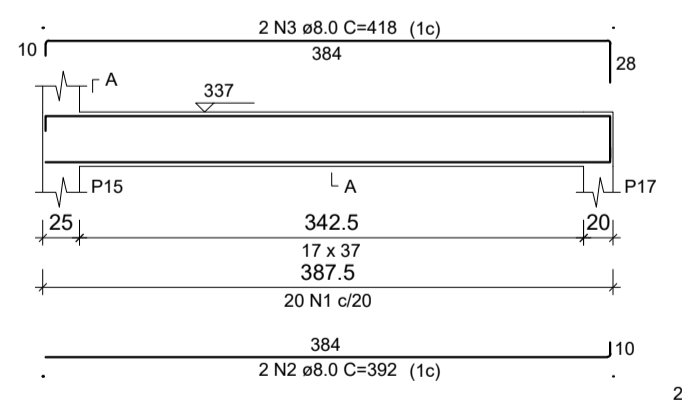
**V30**  
ESC 1:50



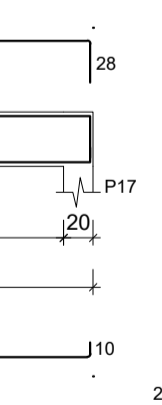
**SEÇÃO A-A**  
ESC 1:25



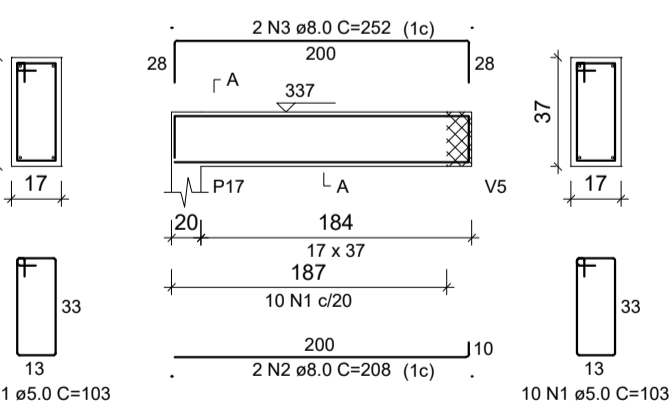
**V31**  
ESC 1:50



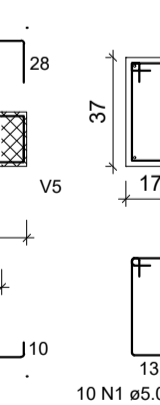
**SEÇÃO A-A**  
ESC 1:25



**V32**  
ESC 1:50



**SEÇÃO A-A**  
ESC 1:25



	<p><b>PREFEITURA MUNICIPAL DE MURIAÉ</b> SECRETARIA MUNICIPAL DE OBRAS PÚBLICAS</p>	
	<p><b>PROJETO ESTRUTURAL CRECHE BOM PASTOR</b></p>	
<p>PROJETO DE VIGAS 02</p>		
<p>PREFEITURA DE MURIAÉ / CNPJ: 17.947.581/0001-76</p>	<p>DESCRIÇÃO: PROJETO ESTRUTURAL PARA CONSTRUÇÃO DE UMA CRECHE NO DISTRITO BOM PASTOR DE MURIAÉ-MG</p>	
<p>PREFEITO IOANNIS KONSTANTINOS GRAMMATIKOPOULOS</p>	<p>LOCAL: RUA ABILIO JOSÉ FRITZ - DISTRITO DO BOM PASTOR - MURIAÉ - MG</p>	<p>ARQUIVO: Projeto vigas 2.DWG</p>
<p>SECRETARIA DE OBRAS PÚBLICAS:</p>	<p>CARLOS MAGNO DE OLIVEIRA</p>	<p>R. T. PROJETO:</p>
<p>LEONARDO DA SILVA CREA RJ 2017103206/D</p>	<p>ESC. INDICADAS</p>	<p>FOLHA: <b>21/22</b></p>
	<p>DATA: ABRIL / 2020</p>	