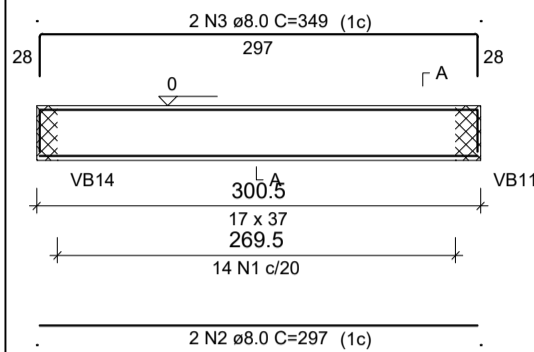
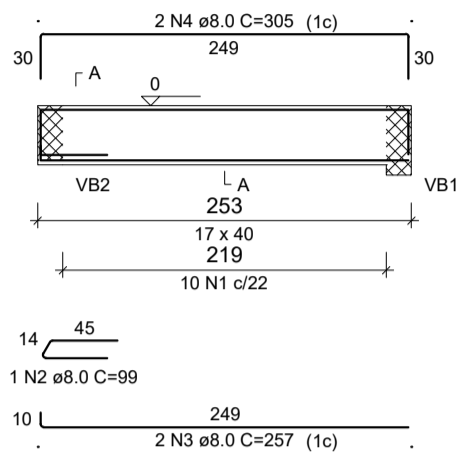


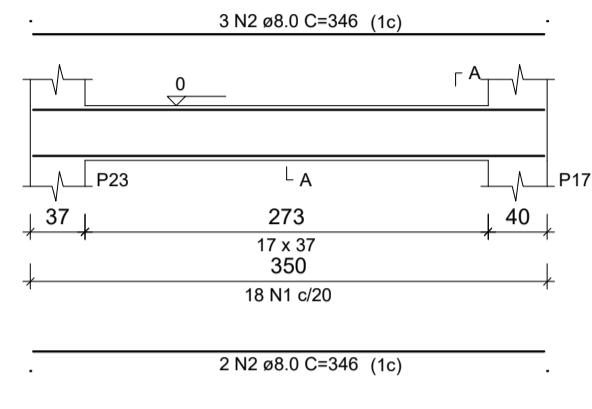
VB27
ESC 1:50



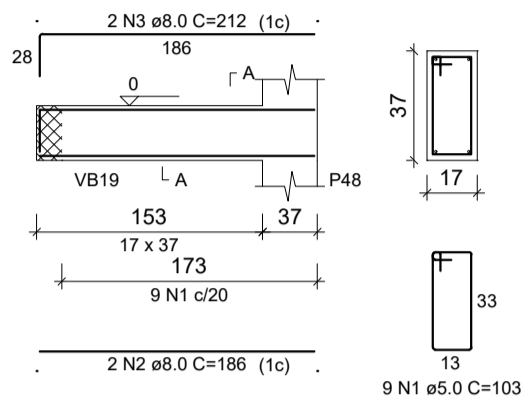
VB28
ESC 1:50



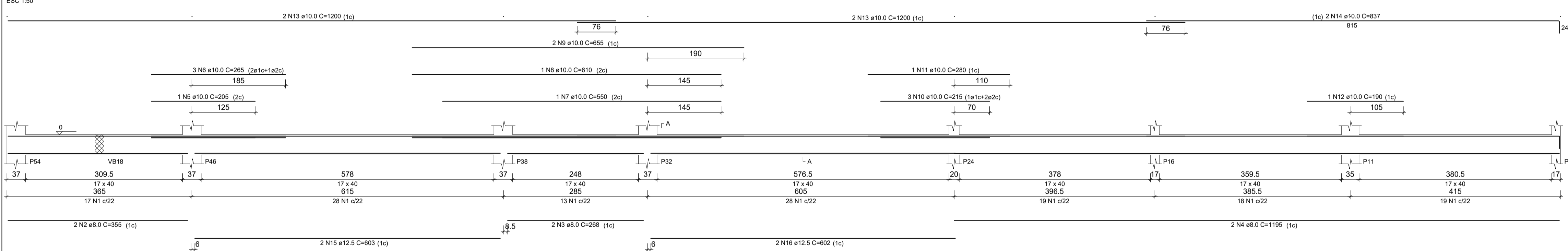
VB29
ESC 1:50



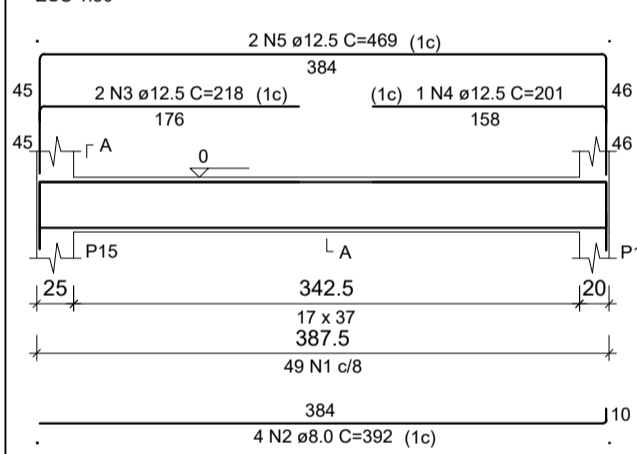
VB30
ESC 1:50



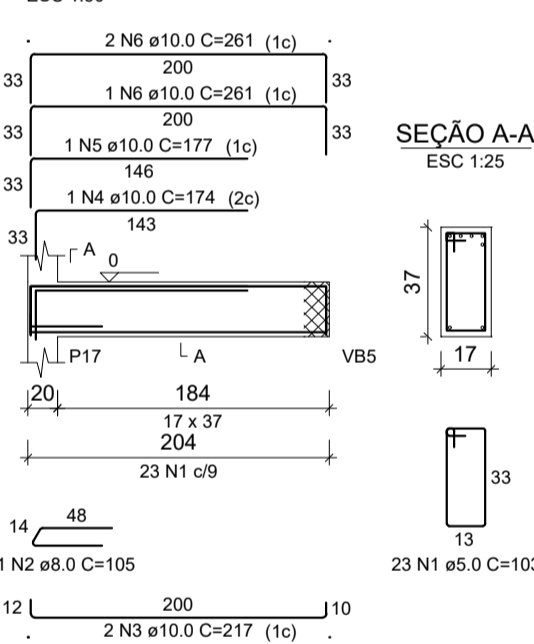
VB31
ESC 1:50



VB32
ESC 1:50



VB33
ESC 1:50



RELAÇÃO DO AÇO

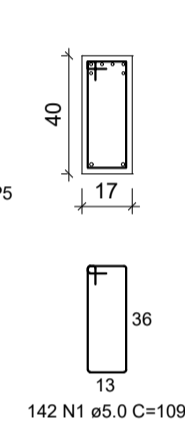
ELEMENTO	AÇO	N	DIAM (mm)	QUANT	C. LINT (cm)	C.TOTAL (cm)
VB27	CA50	1	5.0	14	103	1442
	CA50	2	8.0	2	297	594
	CA50	3	8.0	2	349	698
VB28	CA50	1	5.0	10	109	1090
	CA50	2	8.0	1	99	99
	CA50	3	8.0	2	257	514
VB29	CA50	4	8.0	2	305	610
	CA50	1	5.0	18	103	1854
	CA50	2	8.0	5	346	1730
VB30	CA50	1	5.0	9	103	927
	CA50	2	8.0	2	186	372
	CA50	3	8.0	2	212	424
VB31	CA50	1	5.0	142	109	15478
	CA50	2	8.0	2	355	710
	CA50	3	8.0	2	268	536
	CA50	4	8.0	2	1195	2390
	CA50	5	10.0	1	205	205
	CA50	6	10.0	3	265	795
	CA50	7	10.0	1	550	550
	CA50	8	10.0	1	610	610
	CA50	9	10.0	2	655	1310
	CA50	10	10.0	3	215	645
	CA50	11	10.0	1	280	280
	CA50	12	10.0	1	190	190
	CA50	13	10.0	4	1200	4800
	CA50	14	10.0	2	837	1674
	CA50	15	12.5	2	603	1206
VB32	CA50	16	12.5	2	602	1204
	CA50	1	5.0	49	103	5047
	CA50	2	8.0	4	392	1568
	CA50	3	12.5	2	218	436
	CA50	4	12.5	1	201	201
	CA50	5	12.5	2	469	938
VB33	CA50	1	5.0	23	103	2369
	CA50	2	8.0	1	105	105
	CA50	3	10.0	2	217	434
	CA50	4	10.0	1	174	174
	CA50	5	10.0	1	177	177
	CA50	6	10.0	3	261	783

RESUMO DO AÇO

AÇO	DIAM (mm)	C.TOTAL (m)	PESO + 10% (kg)
CA50	8.0	103.5	44.9
CA50	10.0	126.3	85.6
CA80	12.5	39.9	42.2
CA80	5.0	282.1	47.8

Volume de concreto (C-25) = 3.16 m³
Área de forma = 45.24 m²

SEÇÃO A-A
ESC 1:25



142 N1 ø5.0 C=109

PREFEITURA MUNICIPAL DE MURIAÉ
SECRETARIA MUNICIPAL DE OBRAS PÚBLICAS

PROJETO ESTRUTURAL CRECHE BOM PASTOR

PROJETO DE VIGAS-BALDRAME 03

PREFEITURA DE MURIAÉ / CNPJ: 17.947.581/0001-76

PREFEITO IOANNIS KONSTANTINOS GRAMMATIKOPOULOS

SECRETARIA DE OBRAS PÚBLICAS: CARLOS MAGNO DE OLIVEIRA

R. T. PROJETO: LEONARDO DA SILVA CREA RJ 2017/103206/D

DESCRIÇÃO: PROJETO ESTRUTURAL PARA CONSTRUÇÃO DE UMA CRECHE NO DISTRITO BOM PASTOR DE MURIAÉ-MG

LOCAL: RUA ABÍLIO JOSÉ FRITZ - DISTRITO DO BOM PASTOR - MURIAÉ - MG

ARQUIVO: Projeto vigas-baldrame 3.DWG

ESC. INDICADAS: _____

DATA: ABRIL / 2020

FOLHA: **13/22**