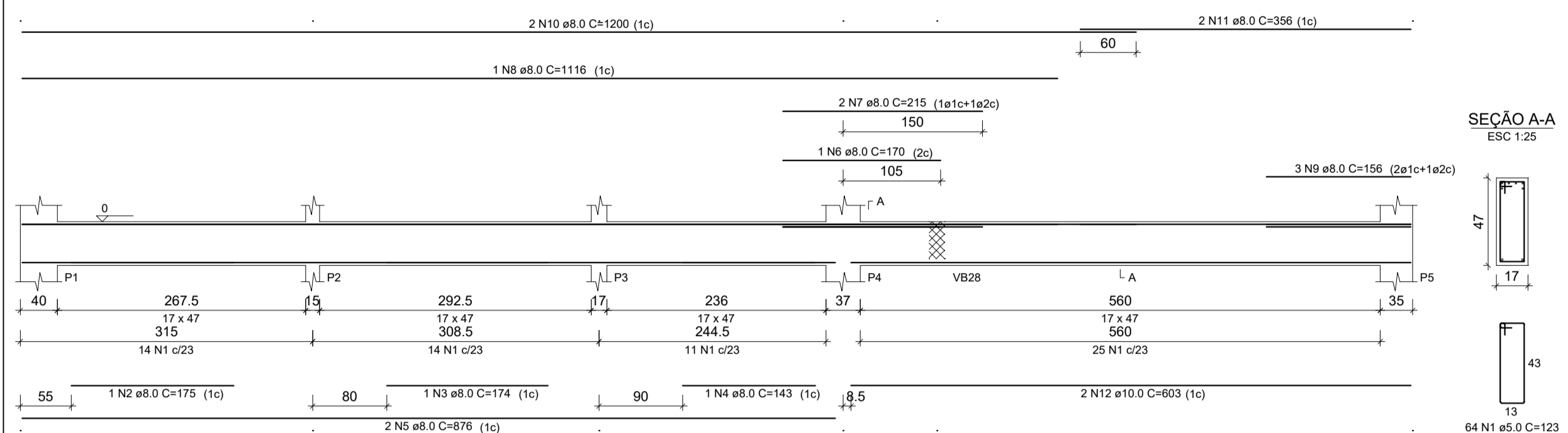
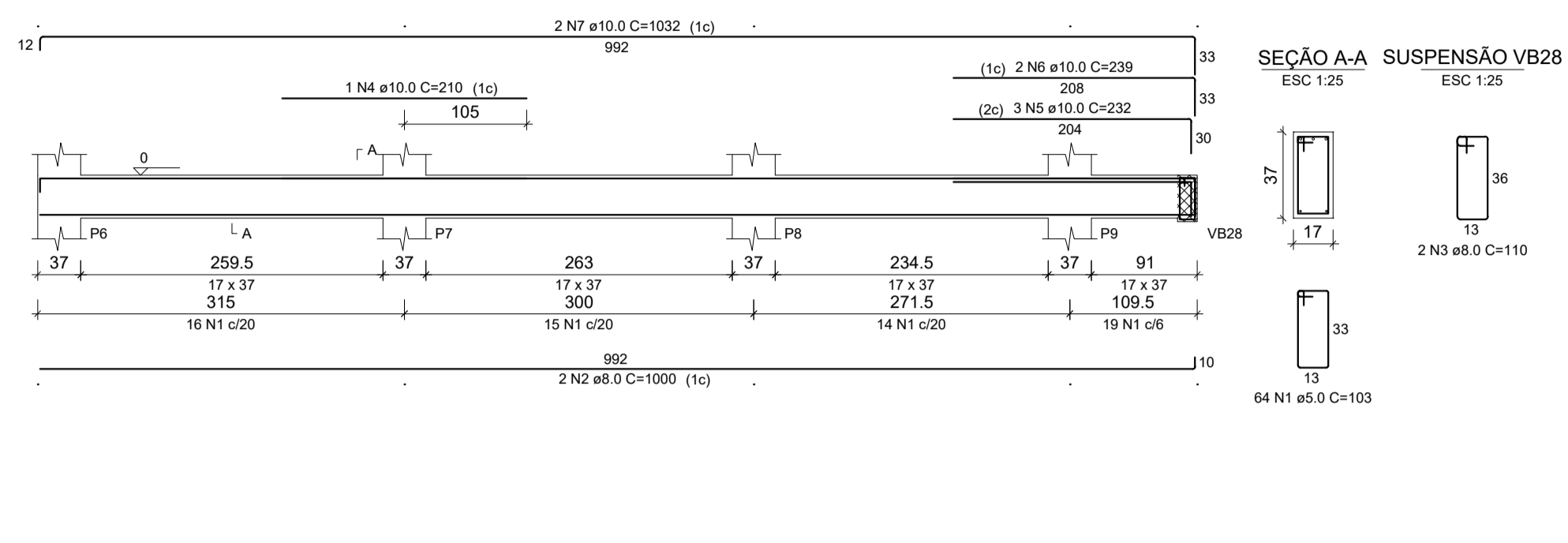


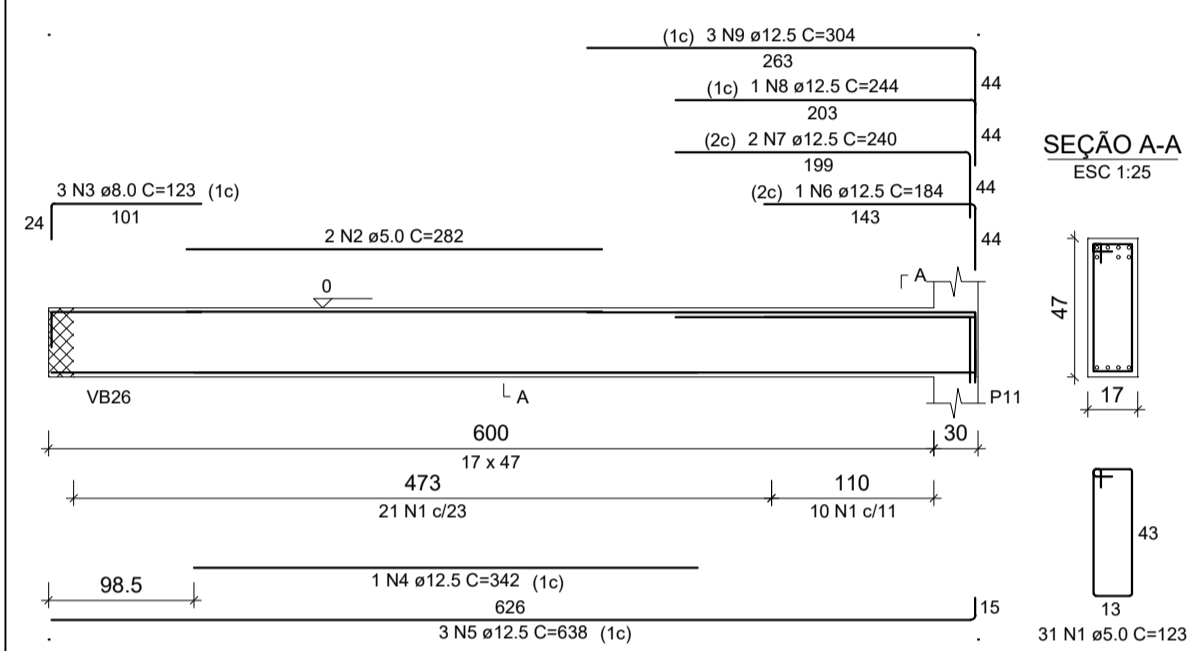
**VB1**  
ESC 1:50



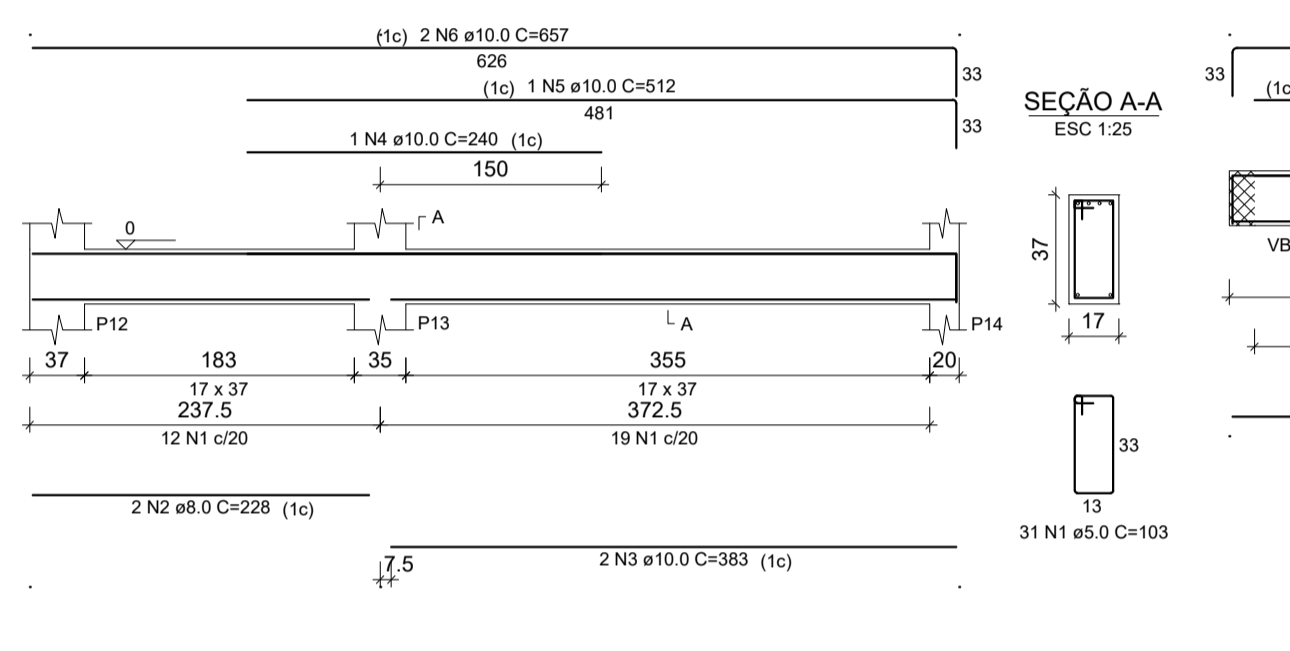
**VB2**  
ESC 1:50



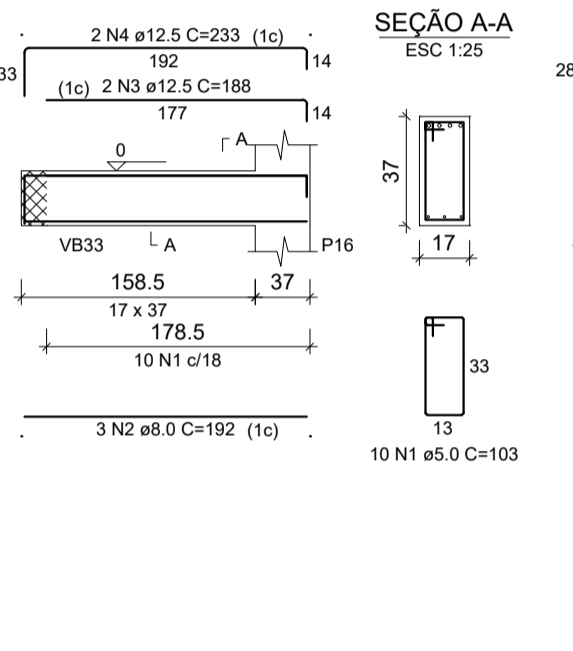
**VB3**  
ESC 1:50



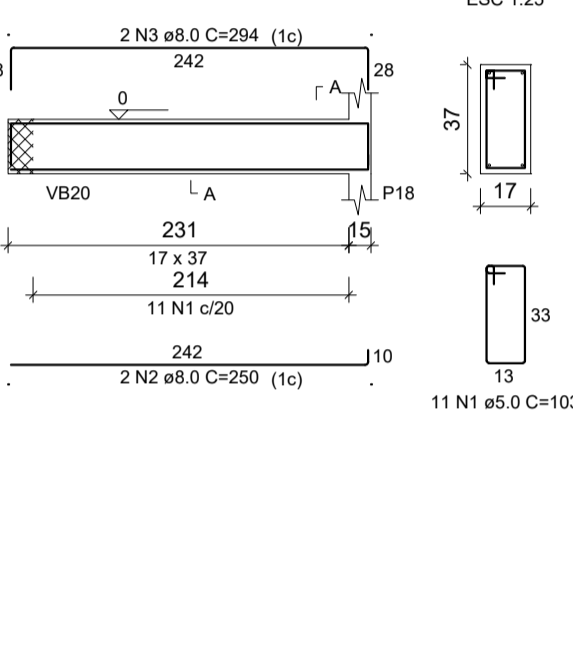
**VB4**  
ESC 1:50



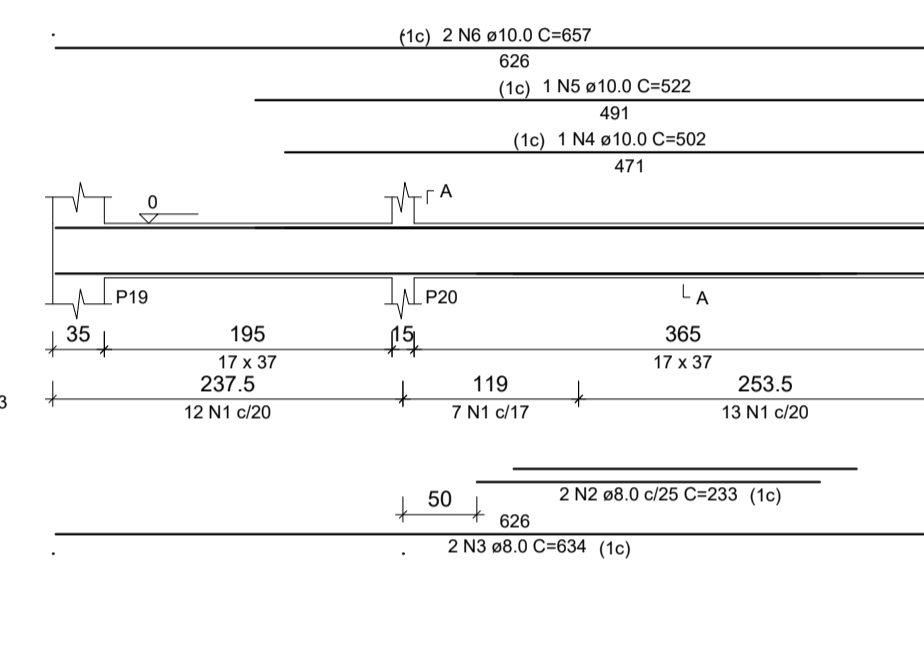
**VB5**  
ESC 1:50



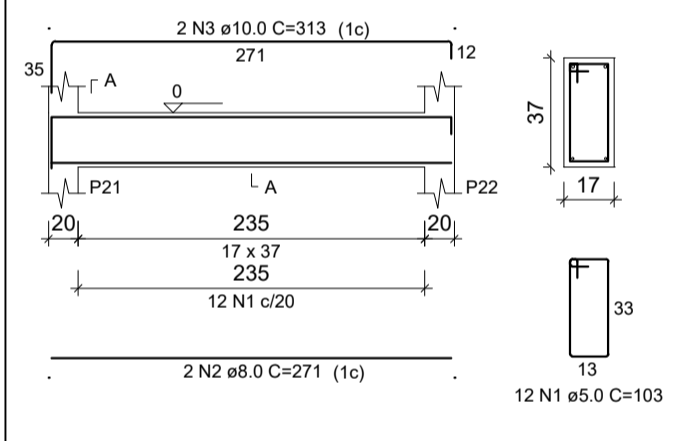
**VB6**  
ESC 1:50



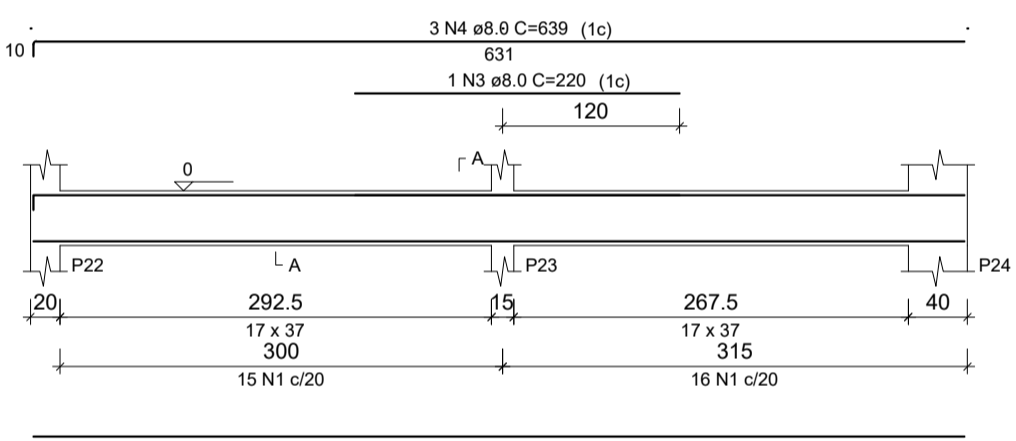
**VB7**  
ESC 1:50



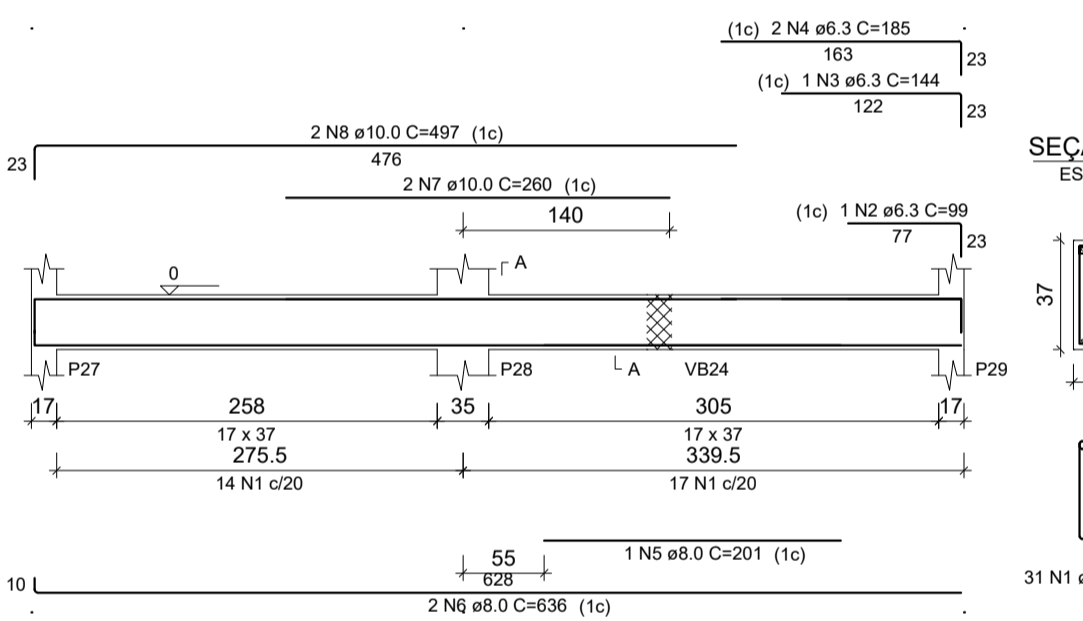
**VB8**  
ESC 1:50



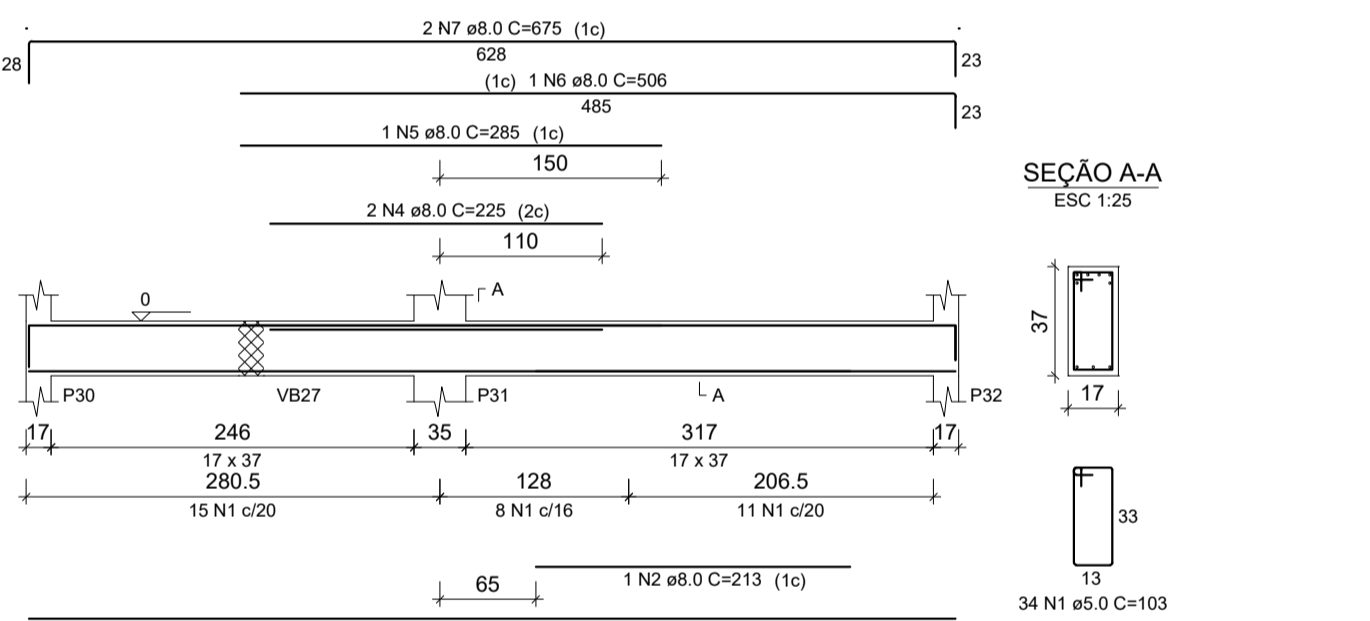
**VB9**  
ESC 1:50



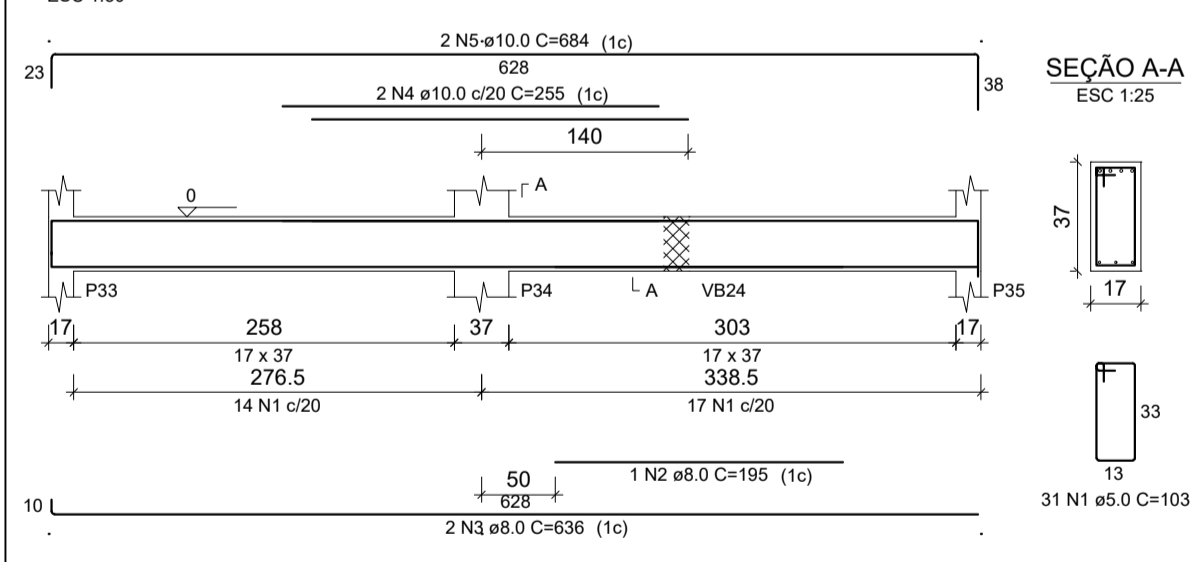
**VB10**  
ESC 1:50



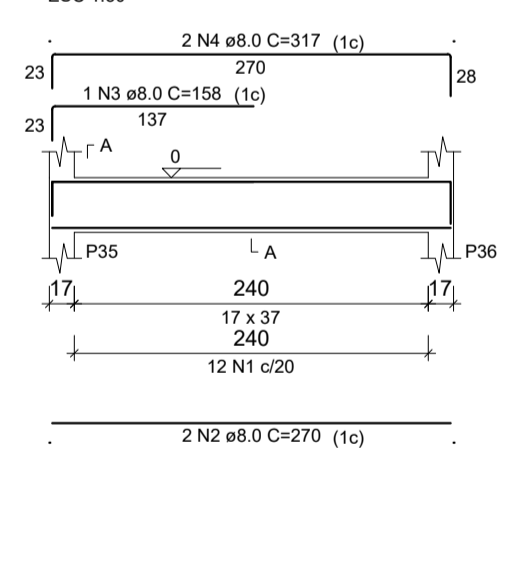
**VB11**  
ESC 1:50



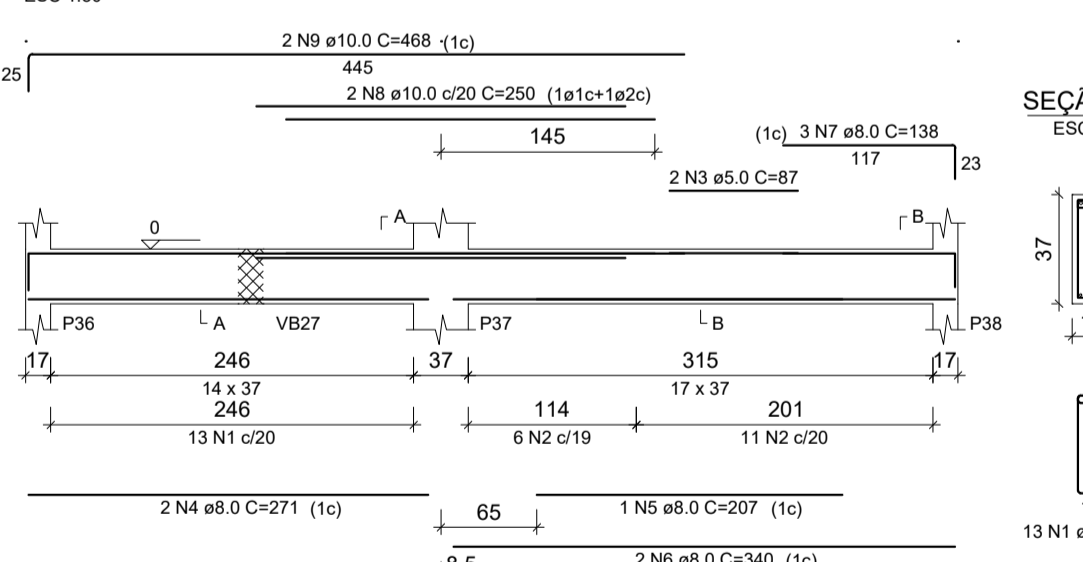
**VB12**  
ESC 1:50



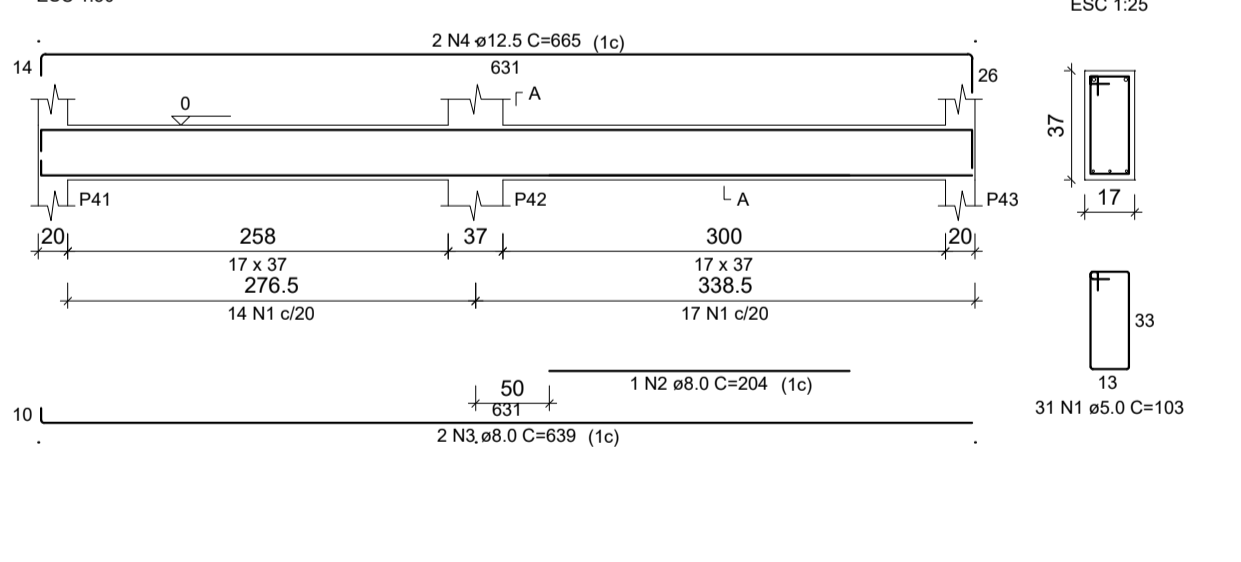
**VB13**  
ESC 1:50



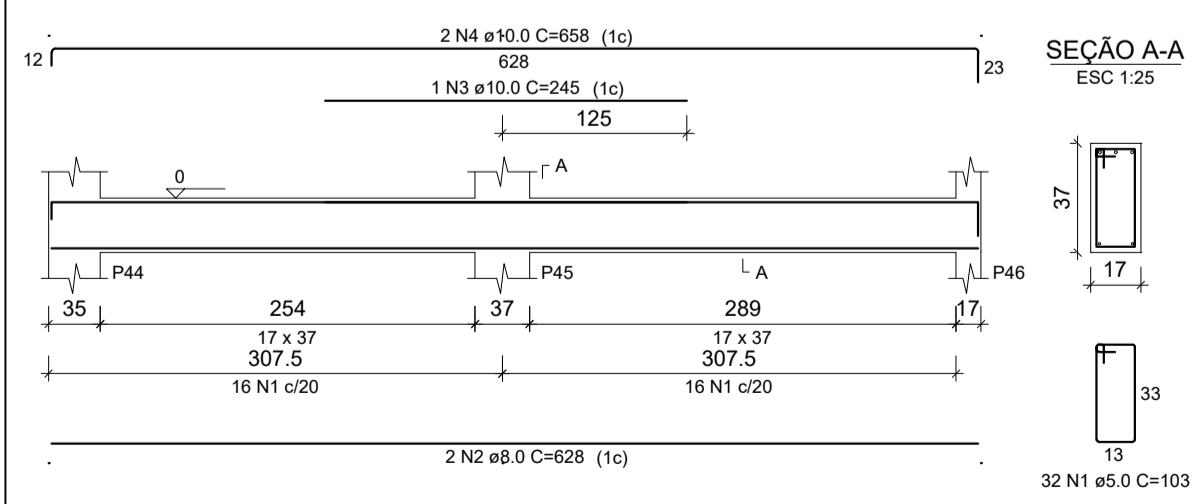
**VB14**  
ESC 1:50



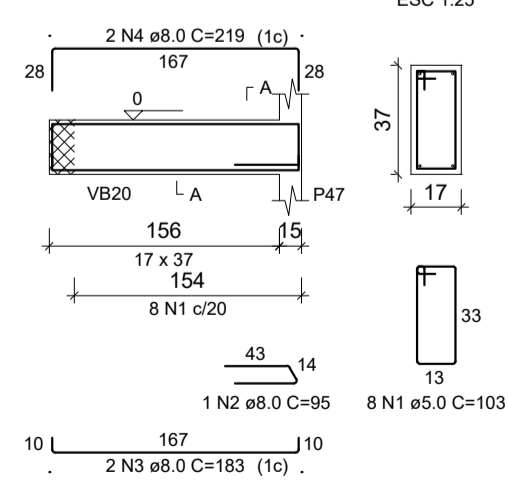
**VB15**  
ESC 1:50



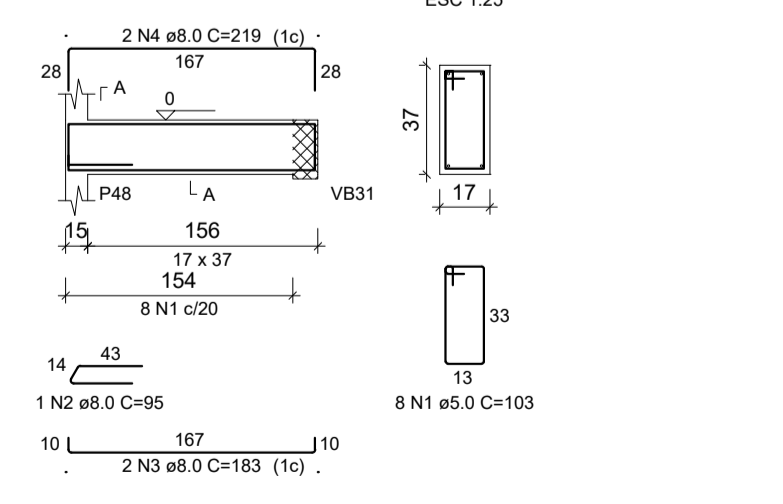
**VB16**  
ESC 1:50



**VB17**  
ESC 1:50



**VB18**  
ESC 1:50



RELAÇÃO DO AÇO

ELEMENTO	AÇO	N	DIAM (mm)	QUANT	C.LIMIT (cm)	C.TOTAL (cm)
VB1	CA50	1	5.0	64	123	7872
	CA50	1	8.0	175	175	175
	CA50	3	8.0	1	174	174
	CA50	4	8.0	1	143	143
	CA50	5	8.0	2	876	1752
	CA50	6	8.0	1	170	170
	CA50	7	8.0	2	215	430
	CA50	8	8.0	1	1116	1116
	CA50	9	8.0	2	156	312
	CA50	10	8.0	2	1200	2400
VB2	CA50	11	8.0	2	356	712
	CA50	12	10.0	2	603	1206
	CA60	1	5.0	64	103	6592
	CA50	2	8.0	2	1000	2000
	CA50	3	8.0	2	110	220
	CA50	4	10.0	1	210	210
	CA50	5	10.0	3	232	696
	CA50	6	10.0	2	239	478
	CA50	7	10.0	2	1032	2064
	CA60	1	5.0	31	123	3813
VB3	CA50	2	8.0	2	282	564
	CA50	3	8.0	3	123	369
	CA50	4	12.5	1	342	342
	CA50	5	12.5	3	638	1914
	CA50	6	12.5	1	184	184
	CA50	7	12.5	2	240	480
	CA50	8	12.5	1	244	244
	CA50	9	12.5	3	304	912
	CA60	1	5.0	31	103	3193
	CA50	2	8.0	2	228	456
VB4	CA50	3	10.0	2	383	766
	CA50	4	10.0	1	240	240
	CA50	5	10.0	1	512	512
	CA50	6	10.0	2	657	1314
	CA50	7	10.0	1	103	1030
	CA50	2	8.0	3	192	576
	CA50	3	8.0	2	228	456
	CA50	4	12.5	2	233	466
	CA60	1	5.0	11	103	1133
	CA50	2	8.0	2	250	500
VB5	CA50	3	8.0	2	294	588
	CA50	4	10.0	2	634	1268
	CA50	2	8.0	2	233	466
	CA50	3	8.0	2	634	1268
	CA50	4	10.0	1	502	502
	CA50	5	10.0	1	522	522
	CA50	6	10.0	6	627	1314
	CA60	1	5.0	12	103	1236
	CA50	2	8.0	2	271	542
	CA50	3	10.0	2	313	626
VB6	CA50	4	10.0	2	103	9163
	CA50	2	8.0	2	631	1262
	CA50	3	8.0	1	220	220
	CA50	4	10.0	2	639	1917
	CA60	1	5.0	31	103	3193
	CA50	2	8.0	1	158	158
	CA50	3	6.3	1	144	144
	CA50	4	8.0	2	636	1272
	CA50	5	8.0	2	636	1272
	CA50	6	8.0	1	201	201
VB7	CA50	7	8.0	2	636	1272
	CA50	8	10.0	2	628	1256
	CA50	9	8.0	1	225	225
	CA50	5	8.0	1	285	285
	CA50	6	8.0	1	598	598
	CA50	7	8.0	2	675	1350
	CA50	8	8.0	1	103	3193
	CA50	2	8.0	1	195	195
	CA50	3	8.0	2	636	1272
	CA50	4	10.0	2	255	510
VB8	CA50	5	10.0	2	684	1368
	CA50	1	5.0	12	103	1236
	CA50	2	8.0	2	270	540
	CA50	3	8.0	1	158	158
	CA50	4	8.0	2	317	634
	CA60	1	5.0	13	97	1261
	CA50	2	5.0	17	103	1713
	CA50	3	5.0	2	87	174
	CA50	4	8.0	2	271	542
	CA50	5	8.0	1	207	207
VB9	CA50	6	8.0	2	340	680
	CA50	7	8.0	3	138	414
	CA50	8	10.0	2	250	500
	CA50	9	10.0	2	468	936
	CA60	1	5.0	31	103	3193
	CA50	2	8.0	1	294	294
	CA50	3	8.0	2	639	1278
	CA50	4	12.5	2	665	1330
	CA50	1	5.0	32	103	3296
	CA50	2	8.0	2	628	1256
VB10	CA50	3	10.0	1	245	245
	CA50	4	10.0	2	658	1316
	CA50	1	5.0	8	103	824
	CA50	2	8.0	1	95	95
	CA50	3	8.0	2	183	366
	CA50	4	8.0	2	219	438
	CA60	1	5.0	8	103	824
	CA50	2	8.0	2	85	85
	CA50	3	8.0	2	183	366
	CA50	4	8.0	2	219	438

RESUMO DO AÇO

AÇO	DIAM (mm)	C.TOTAL (m)	PESO + 10% (kg)
CA50	8.3	6.1	1.7
CA50	8.0	326.4	141.6
CA50	10.0	188.4	114.2
CA50	12.5	62.5	66.2
CA60	5.0	543.7	92.2

PESO TOTAL (kg)  
CA50 323.7  
CA60 92.2  
Volume de concreto (C-25) = 6.71 m³  
Área de forma = 96.53 m²



**PREFEITURA MUNICIPAL DE MURIAÉ**  
**SECRETARIA MUNICIPAL DE OBRAS PÚBLICAS**

**PROJETO ESTRUTURAL CRECHE BOM PASTOR**

PROJETO DE VIGAS-BALDRAME 01

PREFEITURA DE MURIAÉ / CNPJ: 17.947.581/0001-76 PREFEITO IOANNIS KONSTANTINOS GRAMMATIKOPOULOS	DESCRIÇÃO: PROJETO ESTRUTURAL PARA CONSTRUÇÃO DE UMA CRECHE NO DISTRITO BOM PASTOR DE MURIAÉ-MG
SECRETARIA DE OBRAS PÚBLICAS:	LOCAL: RUA ABÍLIO JOSÉ FRITZ - DISTRITO DO BOM PASTOR - MURIAÉ - MG
	ARQUIVO: Projeto vigas-baldrame 1.DWG
R. T. PROJETO:	ESC. INDICADAS
	DATA: ABRIL / 2020
	FOLHA: <b>11/22</b>

LEONARDO DA SILVA CREA RJ 2017/03206/D