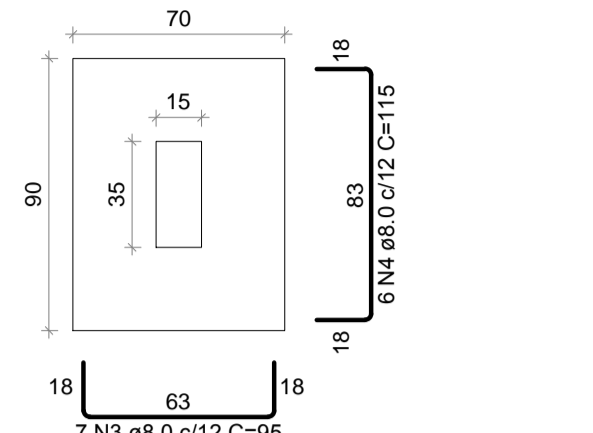


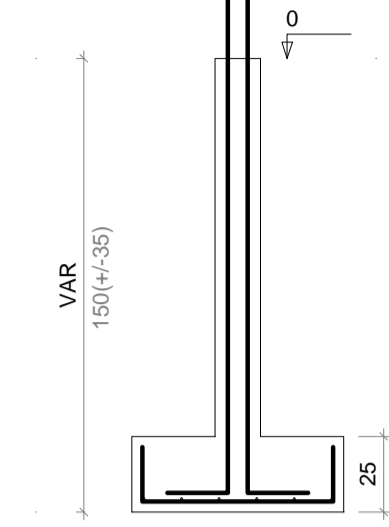
S1=S3=S5=S7=S9=S11=S24=S25

PLANTA
ESC 1:25



Solo com capacidade de suporte > 1.50 kgf/cm²
Solo compactado sobre a sapata
peso especifico > 1600.00 kgf/m³

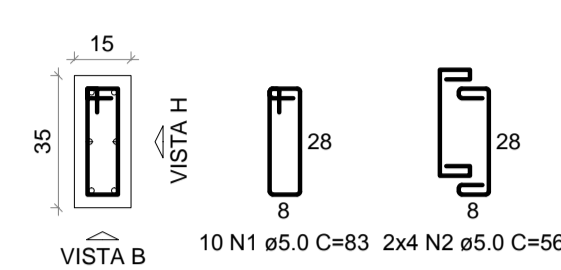
CORTE
ESC 1:25



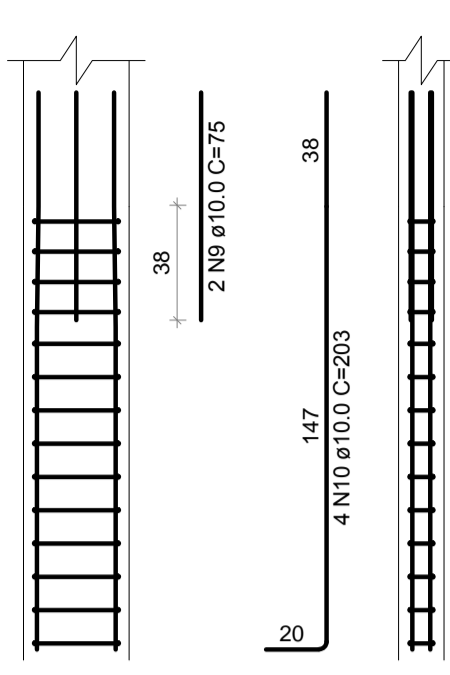
P1=P9

FUNDAÇÃO - L1

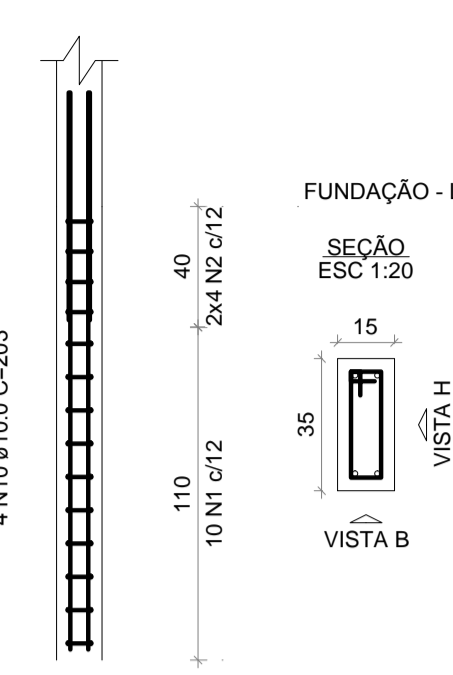
SEÇÃO
ESC 1:20



VISTA H
ESC 1:25



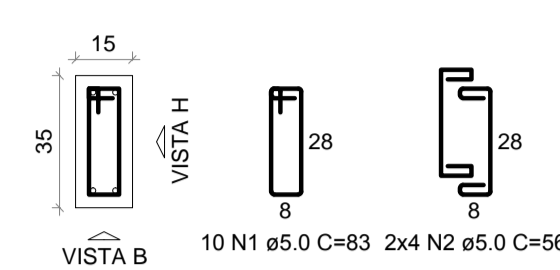
VISTA B
ESC 1:25



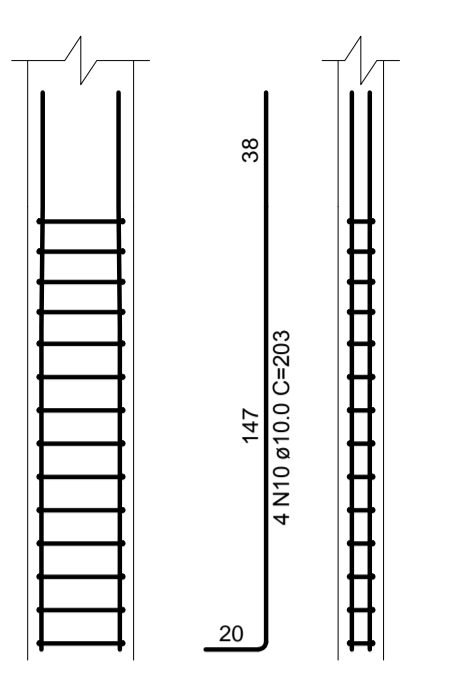
P3=P5=P7=P11=P24=P25

FUNDAÇÃO - L1

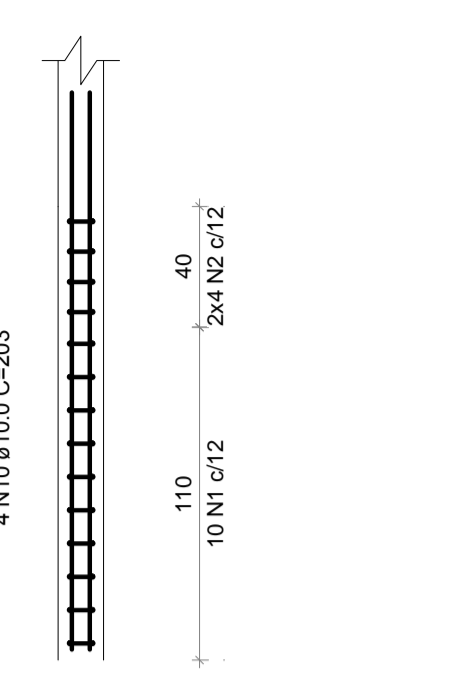
SEÇÃO
ESC 1:20



VISTA H
ESC 1:25



VISTA B
ESC 1:25



RELAÇÃO DO AÇO

2xP1	2xP2	6xP3
6xP4	8xP10	2xP16
8xS1	6xS6	8xS10
4xS16		

AÇO	N	DIAM (mm)	QUANT	C.UNIT (cm)	C.TOTAL (cm)
CA60	1	5.0	260	83	21580
	2	5.0	208	56	11648
CA50	3	8.0	56	95	5320
	4	8.0	84	115	9660
	5	8.0	42	85	3570
	6	8.0	100	105	10500
	7	8.0	56	125	7000
	8	8.0	28	135	3780
	9	10.0	4	75	300
	10	10.0	96	203	19488
	11	10.0	8	161	1288
	12	12.5	12	94	1128

RESUMO DO AÇO

AÇO	DIAM (mm)	C.TOTAL (m)	PESO + 10% (kg)
CA50	8.0	398.3	172.9
	10.0	210.8	142.9
	12.5	11.3	12
CA60	5.0	332.3	56.3

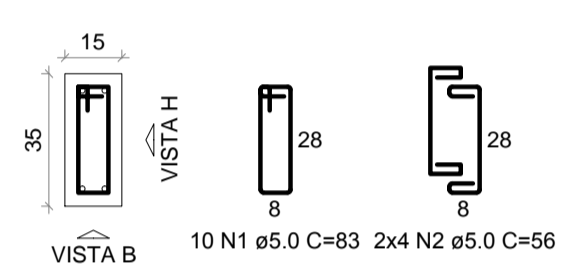
PESO TOTAL (kg)	
CA50	327.8
CA60	56.3

Volume de concreto (C-25) = 2.05 m³
Volume de concreto (C-30) = 4.57 m³
Área de forma = 60.80 m²

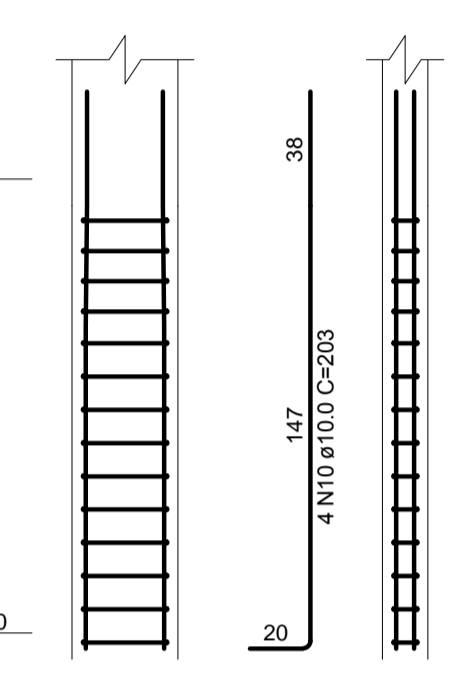
P2=P8

FUNDAÇÃO - L1

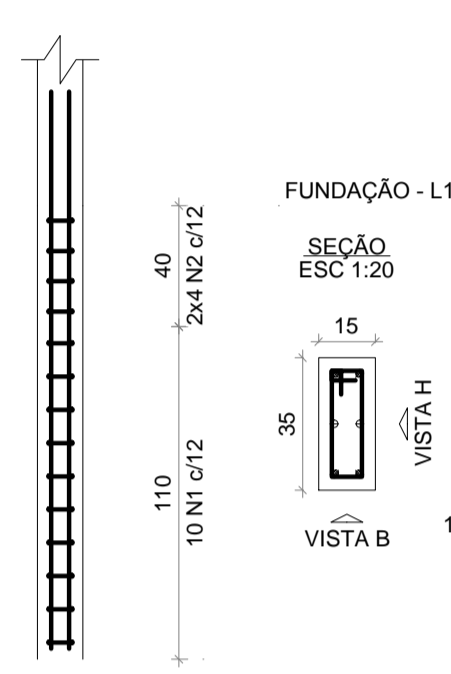
SEÇÃO
ESC 1:20



VISTA H
ESC 1:25



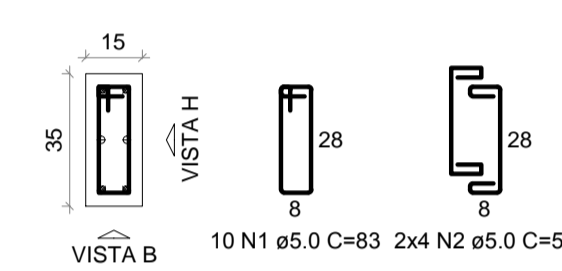
VISTA B
ESC 1:25



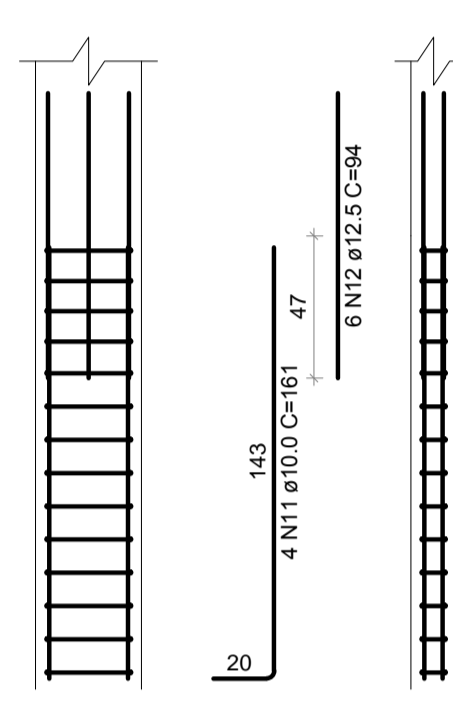
P16=P21

FUNDAÇÃO - L1

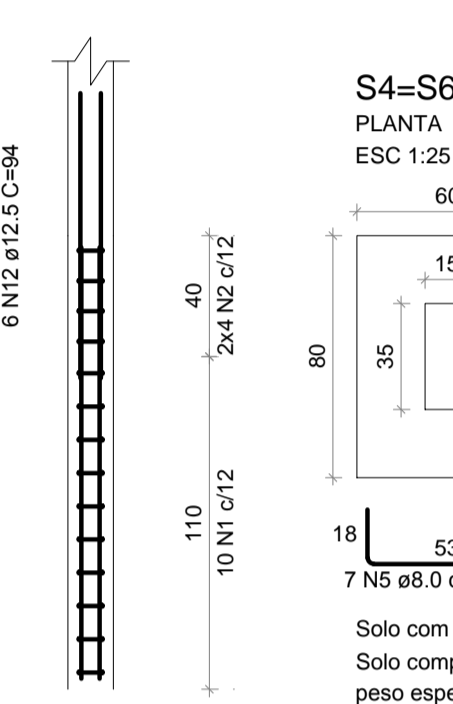
SEÇÃO
ESC 1:20



VISTA H
ESC 1:25

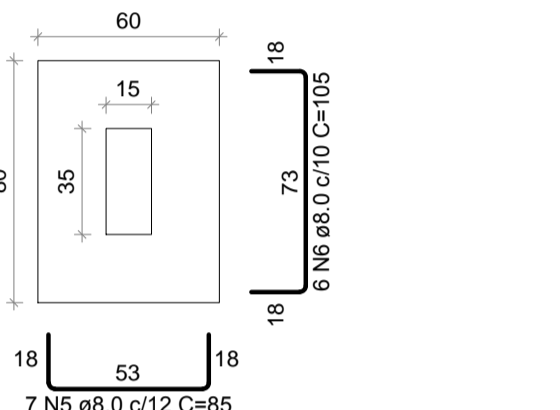


VISTA B
ESC 1:25



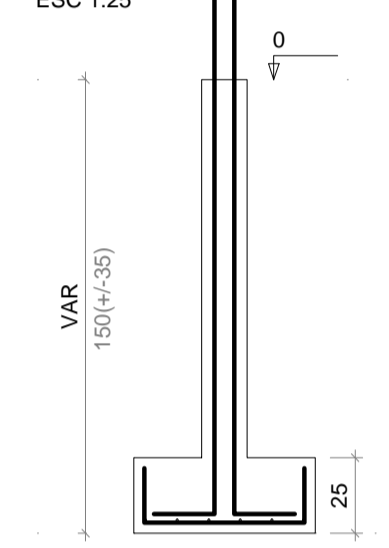
S4=S6=S15=S22=S23=S26

PLANTA
ESC 1:25



Solo com capacidade de suporte > 1.50 kgf/cm²
Solo compactado sobre a sapata
peso especifico > 1600.00 kgf/m³

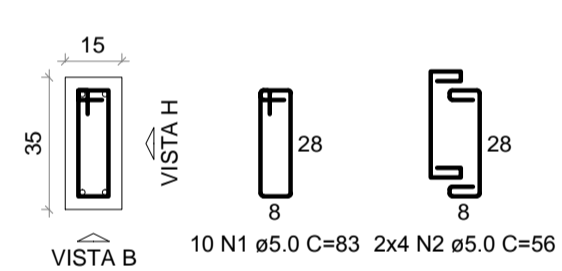
CORTE
ESC 1:25



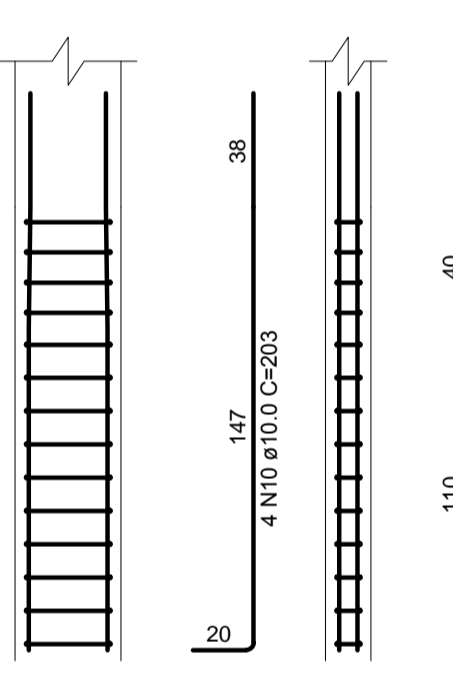
P10=P12=P13=P14=P17=P18=P19=P20

FUNDAÇÃO - L1

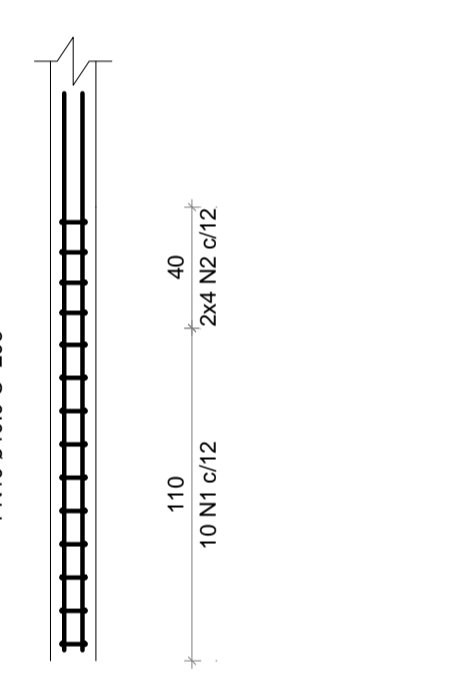
SEÇÃO
ESC 1:20



VISTA H
ESC 1:25

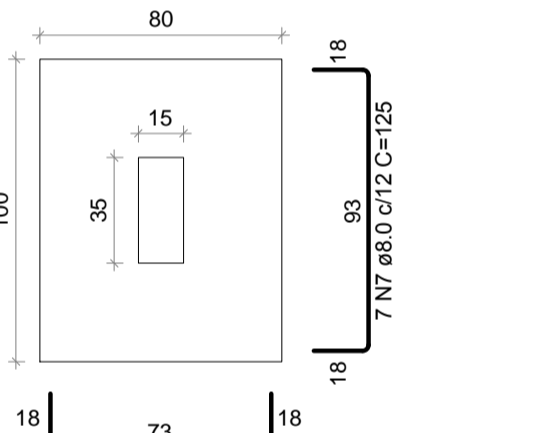


VISTA B
ESC 1:25



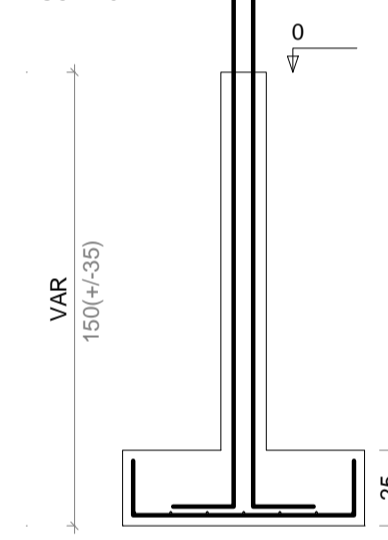
S10=S12=S13=S14=S17=S18=S19=S20

PLANTA
ESC 1:25



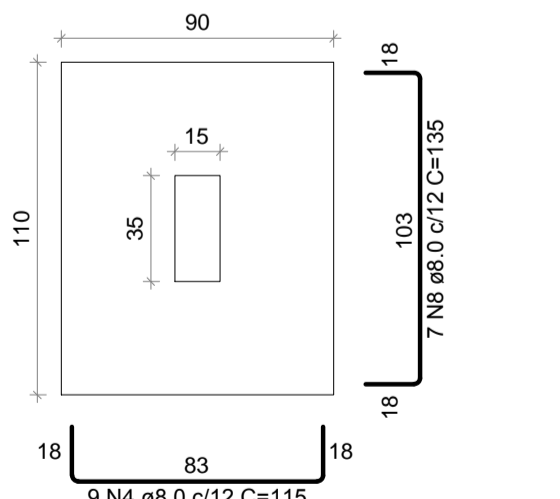
Solo com capacidade de suporte > 1.50 kgf/cm²
Solo compactado sobre a sapata
peso especifico > 1600.00 kgf/m³

CORTE
ESC 1:25



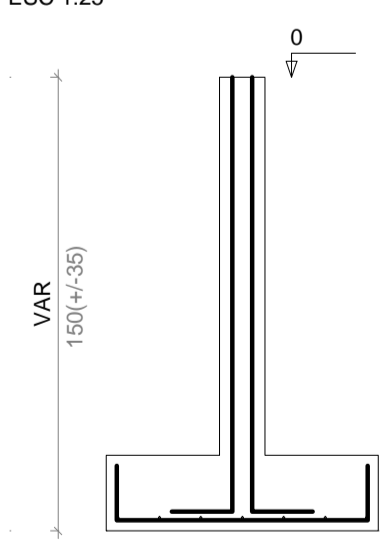
S2=S8=S16=S21

PLANTA
ESC 1:25



Solo com capacidade de suporte > 1.50 kgf/cm²
Solo compactado sobre a sapata
peso especifico > 1600.00 kgf/m³

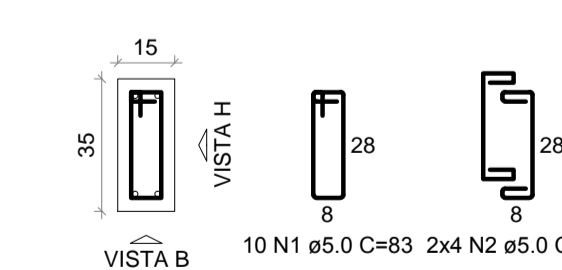
CORTE
ESC 1:25



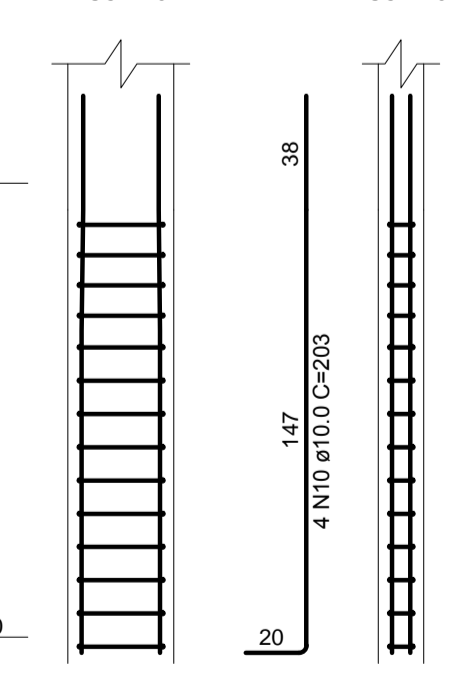
P4=P6=P15=P22=P23=P26

FUNDAÇÃO - L1

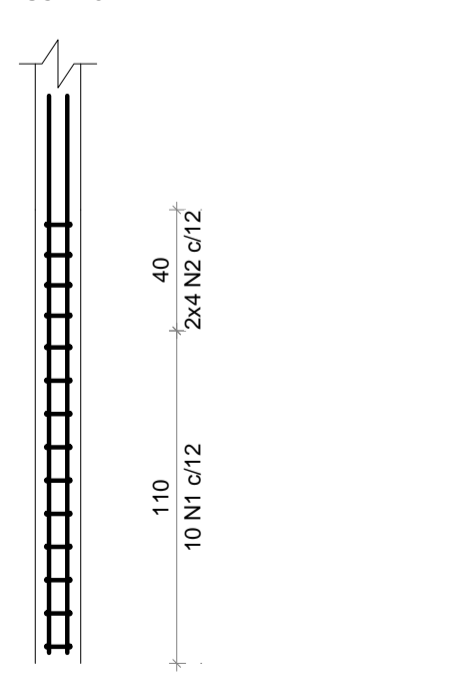
SEÇÃO
ESC 1:20



VISTA H
ESC 1:25



VISTA B
ESC 1:25



	PREFEITURA MUNICIPAL DE MURIAÉ SECRETARIA MUNICIPAL DE OBRAS PÚBLICAS	
	COMPLEXO DOM DELFIM	
PROJETO FUNDAÇÃO		
PREFEITURA DE MURIAÉ / CNPJ: 17.947.581/0001-76	DESCRIÇÃO: PROJETO DE CONSTRUÇÃO DE UM VESTIÁRIO, SITUADO NO COMPLEXO DOM DELFIM NO BAIRRO DA BARRA EM MURIAÉ.	
PREFEITO IGORIS KONSTANTINOS GRAMMATIKOPOULOS	LOCAL: RUA ITAGIBA DE OLIVEIRA, COMPLEXO DOM DELFIM BARRA - MURIAÉ - MG	ARQUIVO: VESTIARIO DOM DELFIM FINAL.DWG
SECRETARIA DE OBRAS PÚBLICAS: CARLOS MAGNO DE OLIVEIRA	R. T. PROJETO: LEONARDO DA SILVA CREA - RJ 2011/03206/D	FOLHA: 04/10