

RESUMO DO AÇO

AÇO	DIAM (mm)	C.TOTAL (m)	PESO + 10% (kg)
CA50	8.0	671.5	291.5
CA60	5.0	594.6	100.8
PESO TOTAL (kg)			
CA50		291.5	
CA60		100.8	

Volume de concreto (C-25) = 8.56 m³
Área de forma = 108.08 m²

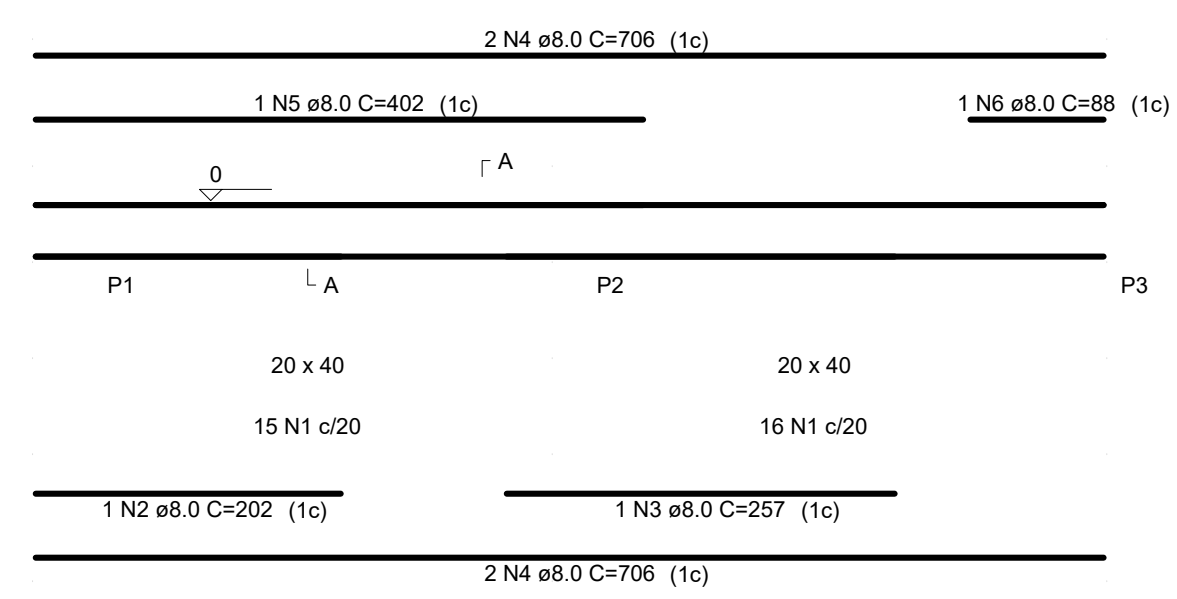
RELAÇÃO DO AÇO

ELEMENTO	AÇO	N	DIAM (mm)	QUANT	C.UNIT (cm)	C.TOTAL (cm)
VB1	CA60	1	5.0	31	115	3565
	CA50	2	8.0	1	202	202
	CA50	3	8.0	1	257	257
	CA50	4	8.0	4	706	2824
	CA50	5	8.0	1	402	402
	CA50	6	8.0	1	88	88
VB2	CA60	1	5.0	29	115	3335
	CA50	2	8.0	1	152	152
	CA50	3	8.0	1	94	94
	CA50	4	8.0	2	627	1254
	CA50	5	8.0	3	641	1923
	CA50	6	8.0	1	88	88
VB3	CA60	1	5.0	69	115	7935
	CA50	2	8.0	6	271	1626
	CA50	3	8.0	1	102	102
	CA50	4	8.0	1	287	287
	CA50	5	8.0	1	160	160
	CA50	6	8.0	2	934	1868
	CA50	7	8.0	1	212	212
	CA50	8	8.0	2	445	890
	CA50	9	8.0	1	1010	1010
	CA50	10	8.0	1	103	103
	CA50	11	8.0	2	1198	2396
	CA50	12	8.0	2	196	392
VB4	CA60	1	5.0	6	115	690
	CA50	2	8.0	3	131	393
	CA50	3	8.0	3	179	537
	CA60	1	5.0	5	115	575
	CA50	2	8.0	9	120	1080
	CA50	3	8.0	3	154	462
VB5	CA60	1	5.0	69	115	7935
	CA50	2	8.0	6	396	2376
	CA50	3	8.0	1	88	88
	CA50	4	8.0	1	295	295
	CA50	5	8.0	1	165	165
	CA50	6	8.0	1	140	140
VB6	CA50	8	8.0	2	928	1856
	CA50	8	8.0	1	225	225
	CA50	9	8.0	2	401	802
	CA50	10	8.0	1	1015	1015
	CA50	11	8.0	1	83	83
	CA50	12	8.0	2	1180	2360
	CA50	13	8.0	2	191	382
	CA60	1	5.0	15	115	1725
	CA50	2	8.0	1	173	173
	CA50	3	8.0	2	299	598
	CA50	4	8.0	3	321	963
	VB7	CA60	1	5.0	78	115
CA50		1	5.0	38	513	513
CA50		3	8.0	1	145	145
CA50		4	8.0	1	140	140
CA50		5	8.0	2	983	1966
CA50		6	8.0	2	245	245
CA50		7	8.0	1	434	434
CA50		8	8.0	2	869	1738
CA50		9	8.0	3	1198	3594
CA50		10	8.0	3	668	2004
CA60		1	5.0	9	105	945
VB8		CA50	2	8.0	1	93
	CA50	3	8.0	2	215	430
	CA50	4	8.0	2	257	514
	CA60	1	5.0	38	115	4370
	CA50	2	8.0	3	832	2496
	CA50	3	8.0	3	868	2574
VB9	CA60	1	5.0	115	4370	
	CA50	2	8.0	6	175	1050
	CA50	3	8.0	3	810	2430
	CA50	4	8.0	3	824	2472
	CA60	1	5.0	23	115	2645
	CA50	2	8.0	1	89	89
VB10	CA50	3	8.0	2	502	1004
	CA50	4	8.0	1	99	99
	CA50	5	8.0	1	88	88
	CA50	6	8.0	2	516	1032
	CA60	1	5.0	20	85	1700
	CA50	2	8.0	2	360	720
VB11	CA50	3	8.0	2	360	760
	CA60	1	5.0	23	115	2645
	CA50	2	8.0	1	89	89
	CA50	3	8.0	2	502	1004
	CA50	4	8.0	1	79	79
	CA50	5	8.0	1	88	88
VB12	CA50	6	8.0	2	516	1032
	CA60	1	5.0	25	115	2875
	CA50	2	8.0	1	289	289
	CA50	3	8.0	1	94	94
	CA50	4	8.0	2	548	1096
	CA50	5	8.0	3	562	1686
VB13	CA60	1	5.0	22	115	2530
	CA50	2	8.0	1	355	355
	CA50	3	8.0	2	476	952
	CA50	4	8.0	1	90	90
	CA50	5	8.0	1	187	187
	CA50	6	8.0	2	490	980
VB14	CA60	1	5.0	23	115	2645
	CA50	2	8.0	1	89	89
	CA50	3	8.0	2	502	1004
	CA50	4	8.0	1	79	79
	CA50	5	8.0	1	88	88
	CA50	6	8.0	2	516	1032

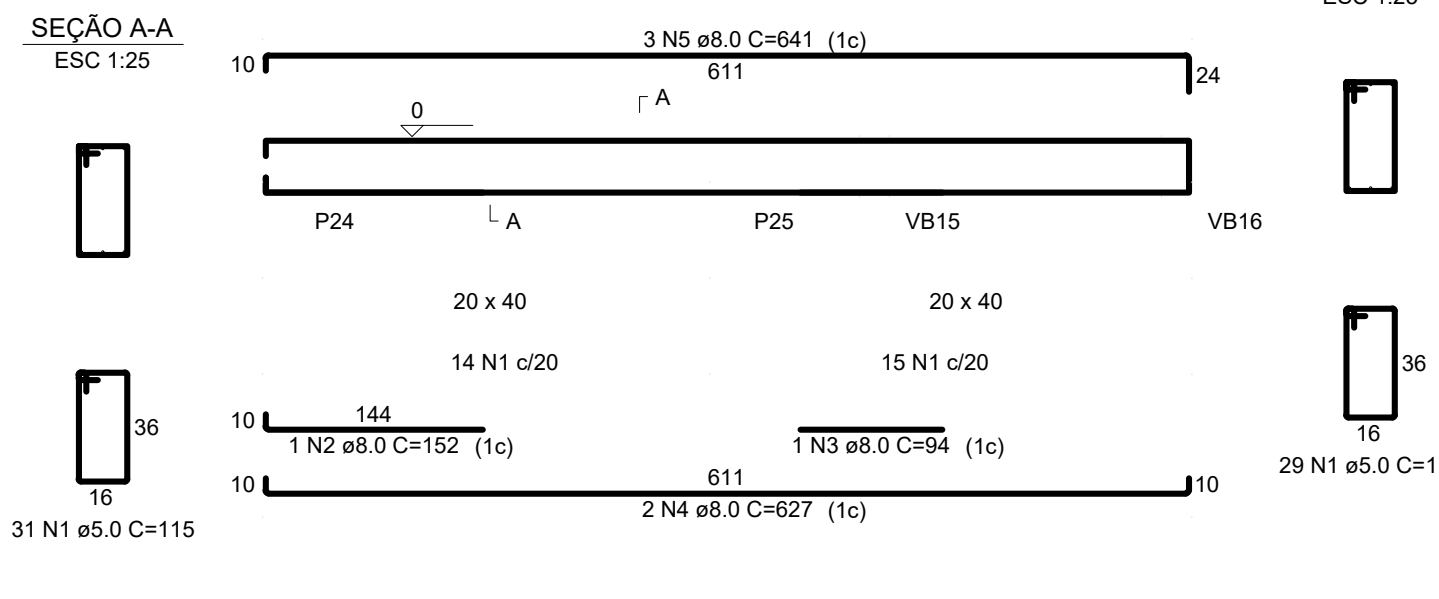
RESUMO DO AÇO

AÇO	DIAM (mm)	C.TOTAL (m)	PESO + 10% (kg)
CA50	8.0	671.5	291.5
CA60	5.0	594.6	100.8

VB1



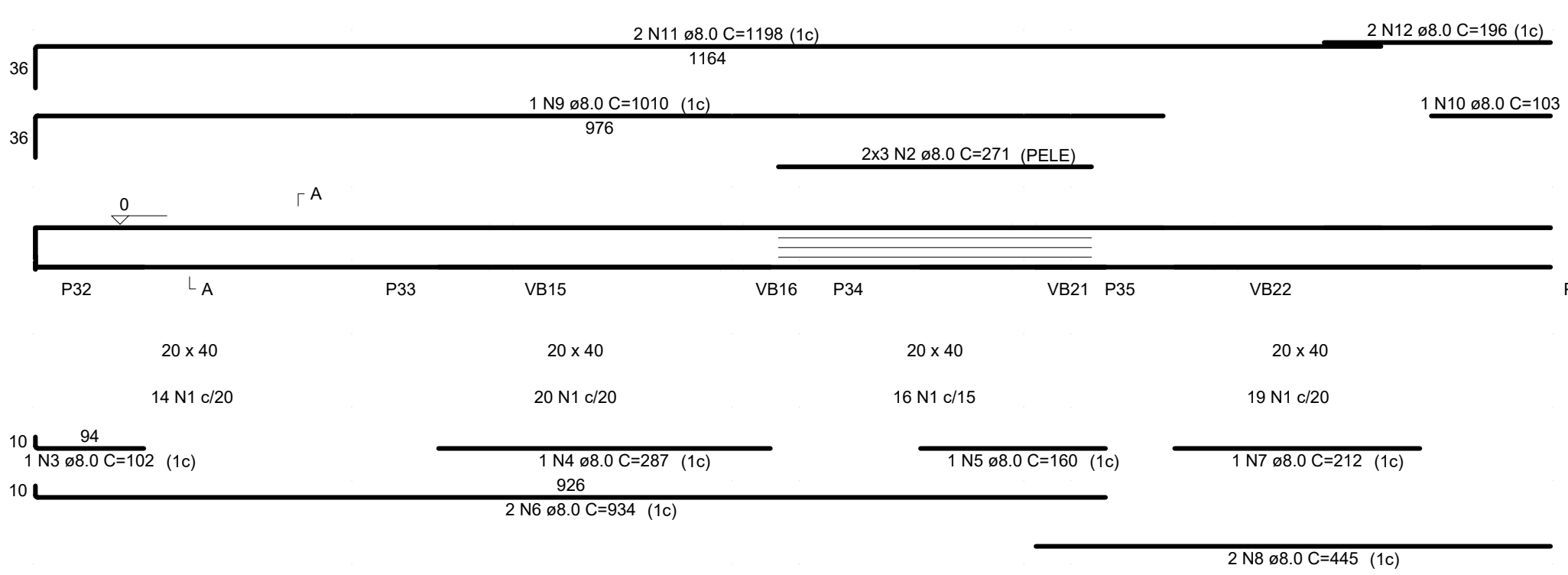
VB2



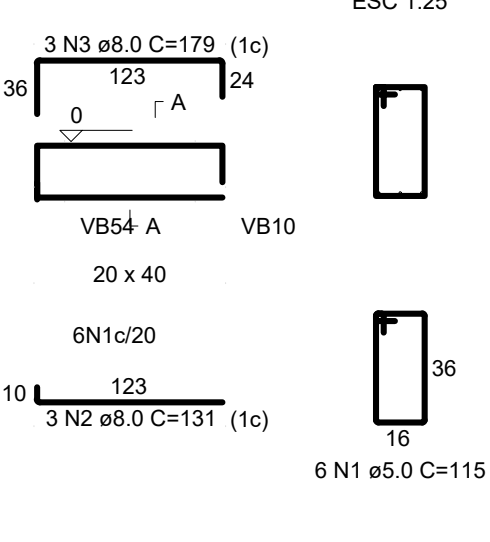
SEÇÃO A-A

ESC 1:25

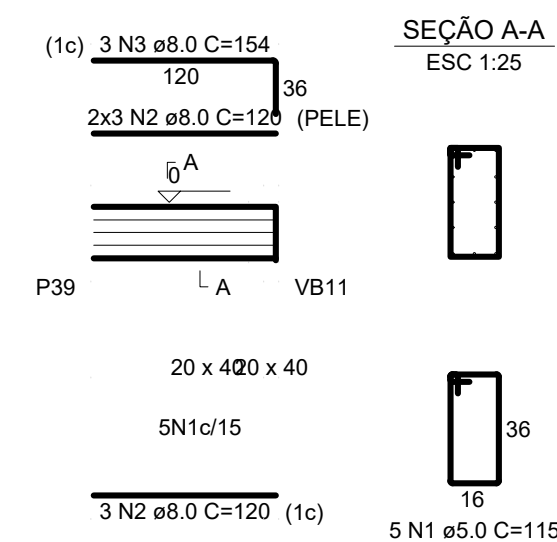
VB3



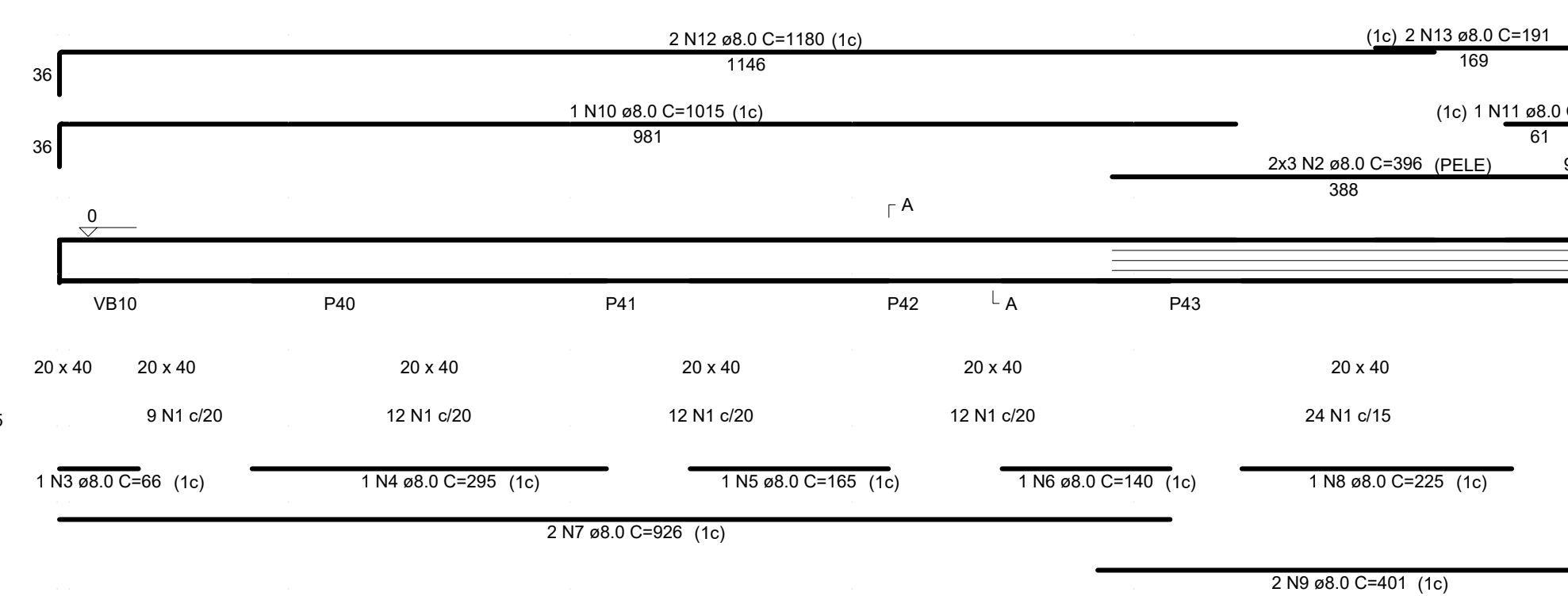
VB4



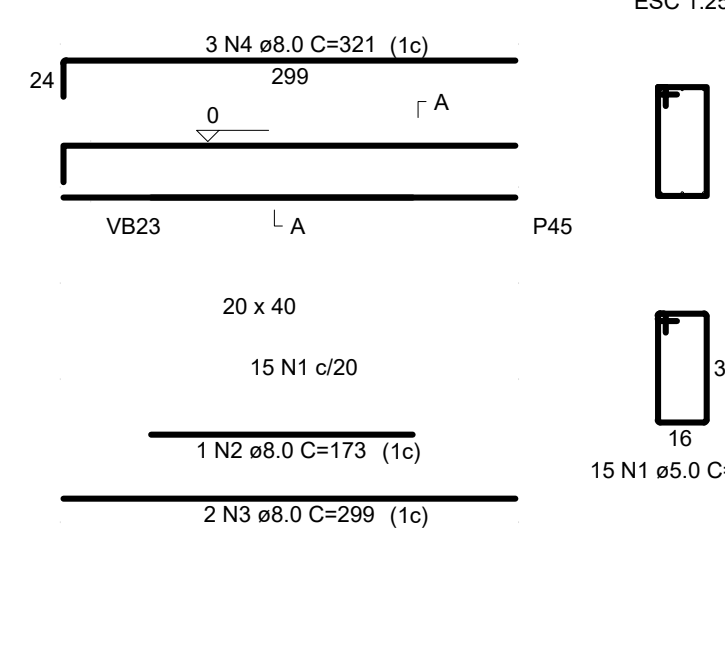
VB5



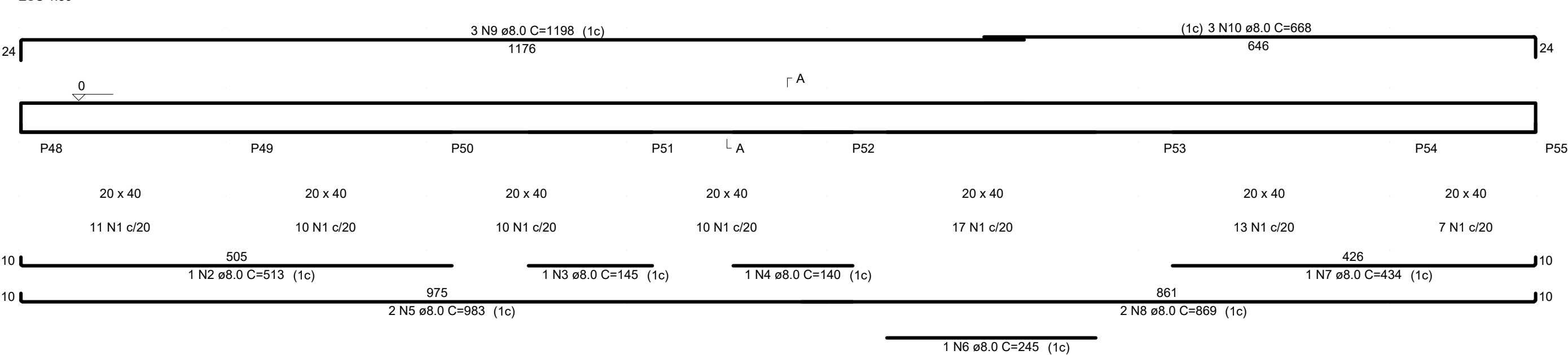
VB6



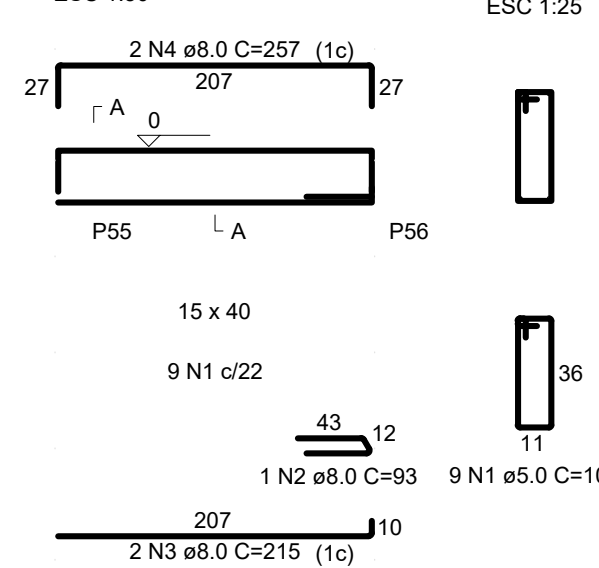
VB7



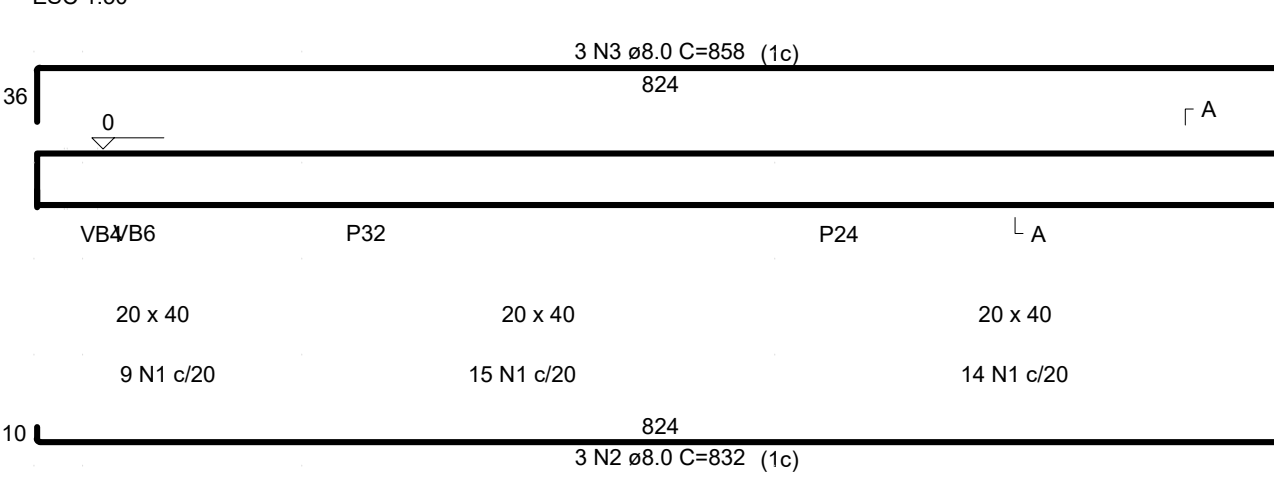
VB8



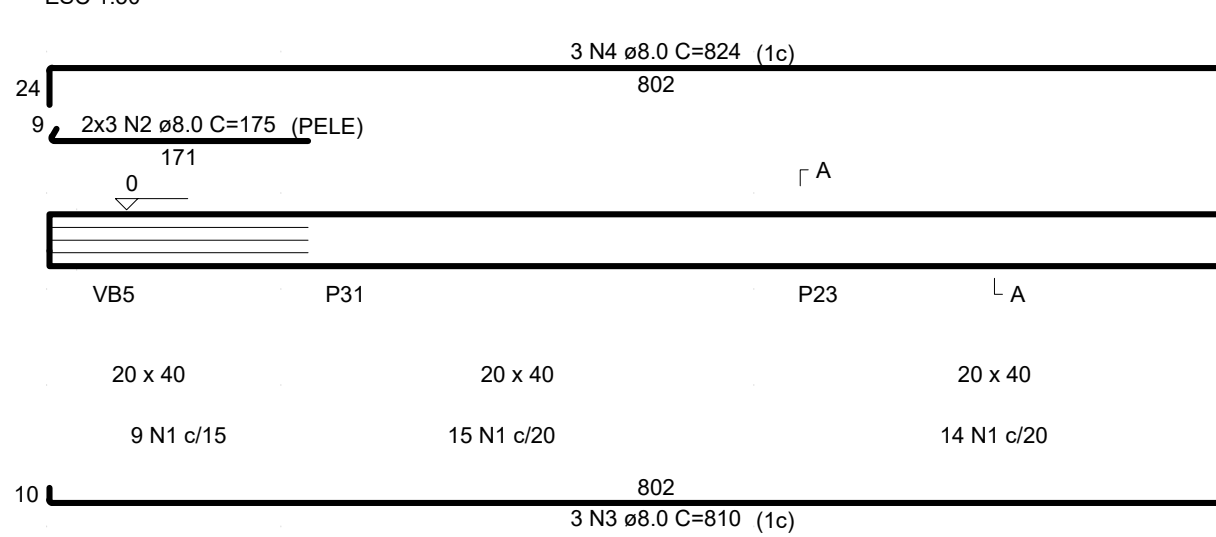
VB9



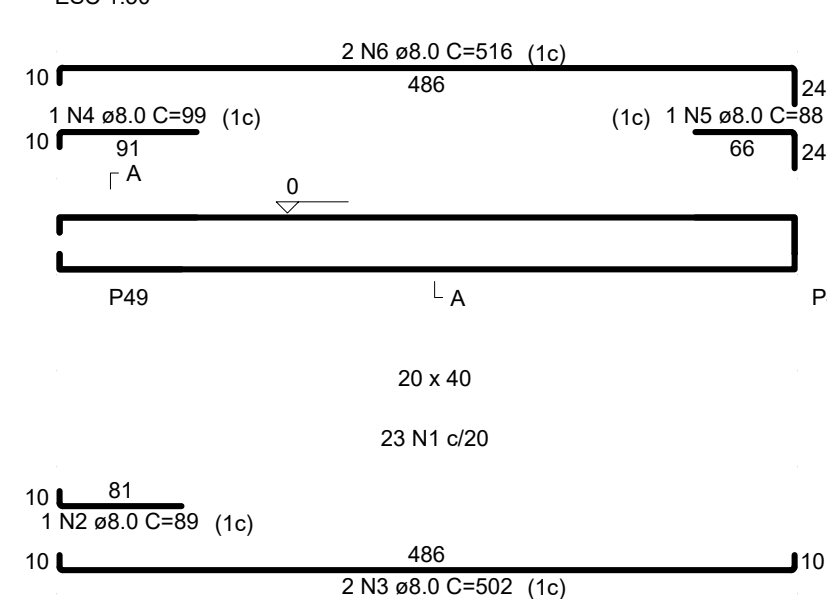
VB10



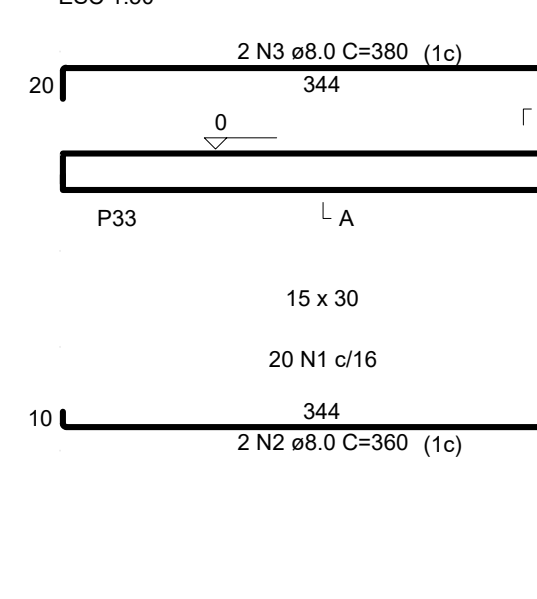
VB11



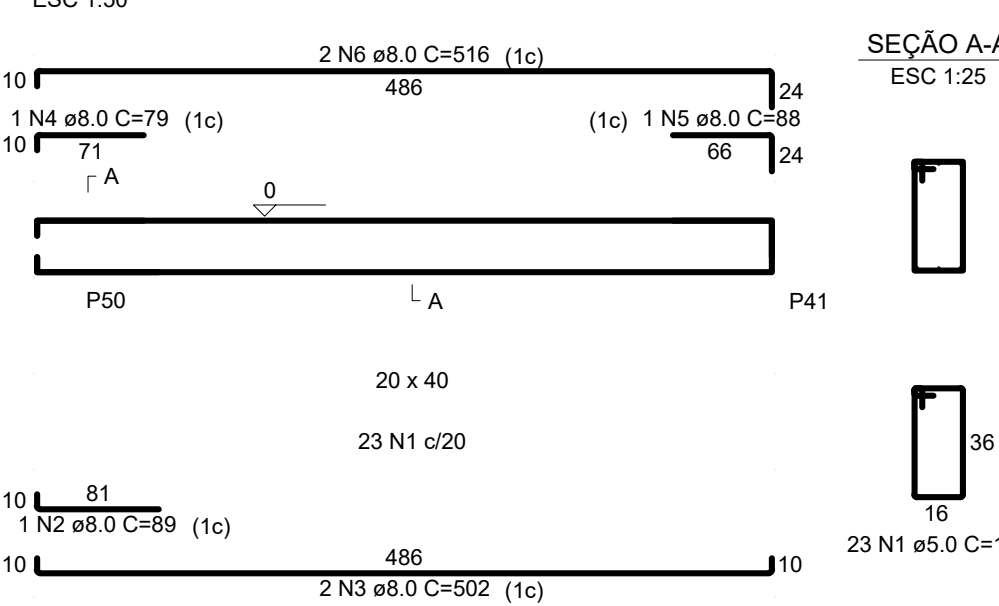
VB12



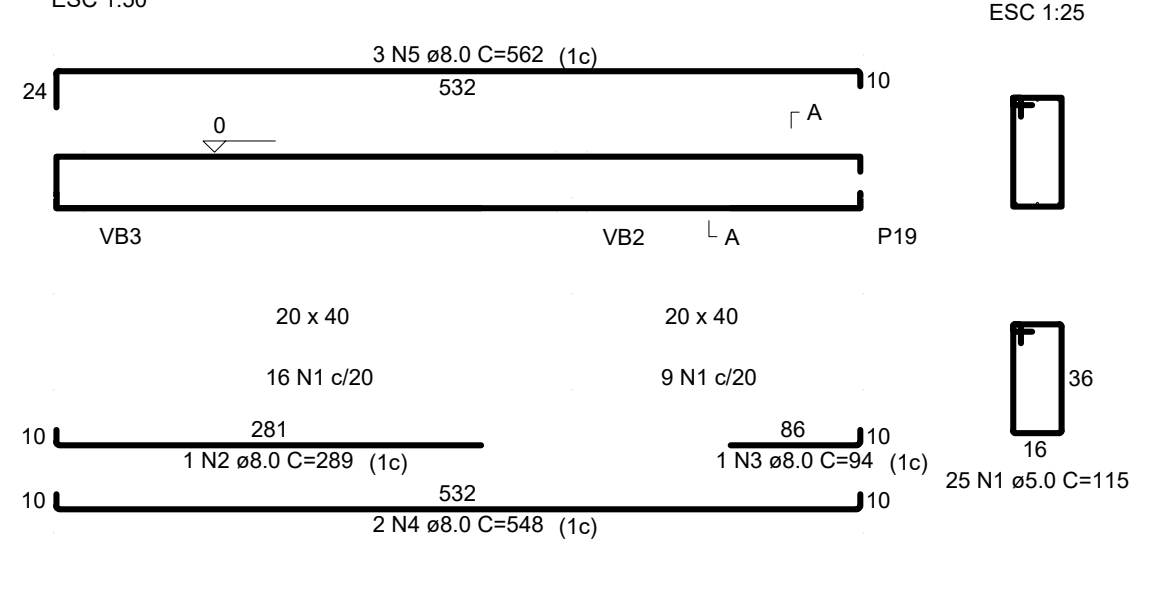
VB13



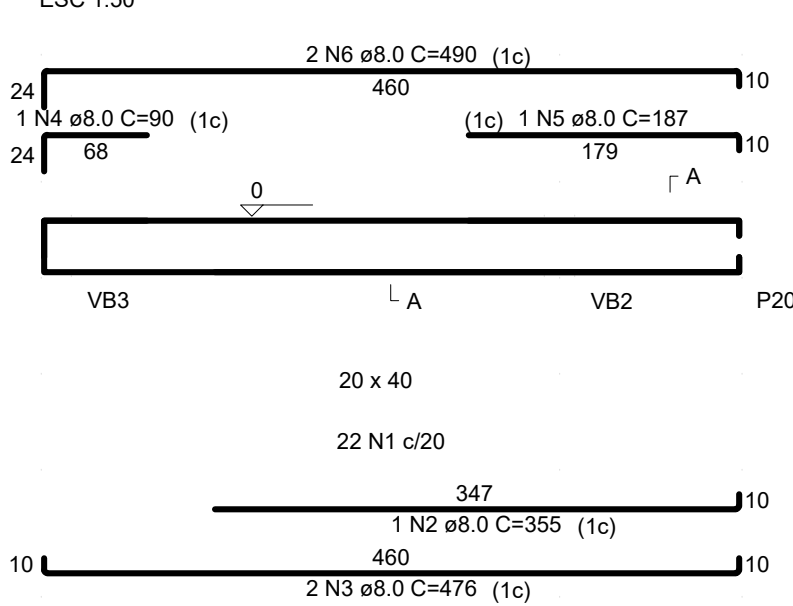
VB14



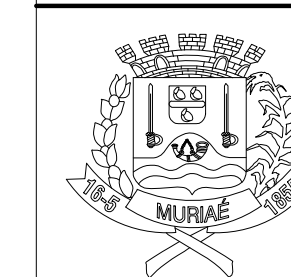
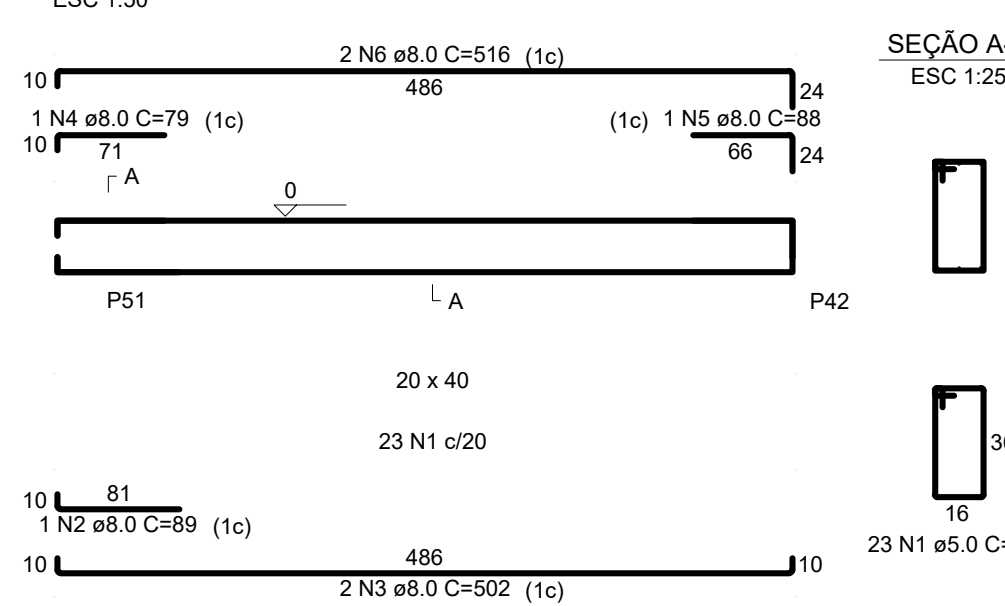
VB15



VB16



VB17



PREFEITURA MUNICIPAL DE MURIAÉ
SECRETARIA MUNICIPAL DE OBRAS PÚBLICAS

PROJETO ESTRUTURAL

PROJETO VIGAS BALDRAMES 2 - 3

PREFEITURA DE MURIAÉ / CNPJ: 17.947.981/0001-76

DESCRIÇÃO:
PROJETO ESTRUTURAL PARA CONSTRUÇÃO DE UMA UBS NO BARRIO INCONFIDENCIA

PREFEITO IDANIS KONSTANTINOS GRAMATIKOPOULOS

LOCAL: RUA CLAUDIO MANOEL DA COSTA ESQUINA COM A RUA ALVARENGA, PROJETO: INCONFIDENCIA - MURIAÉ - MG

SECRETARIA DE OBRAS PÚBLICAS

ARQUIVO: PROJ. ESTRUTURAL UBS INCONFIDENCIA.DWG

CARLOS MAGNO DE OLIVEIRA

R.T. PROJETO:

LEONARDO DA SILVA
ENGRº CIVIL - CREA RJ 201710309D

ESC. INDICADAS

DATA: JULHO/2020

FOLHA: 12/34