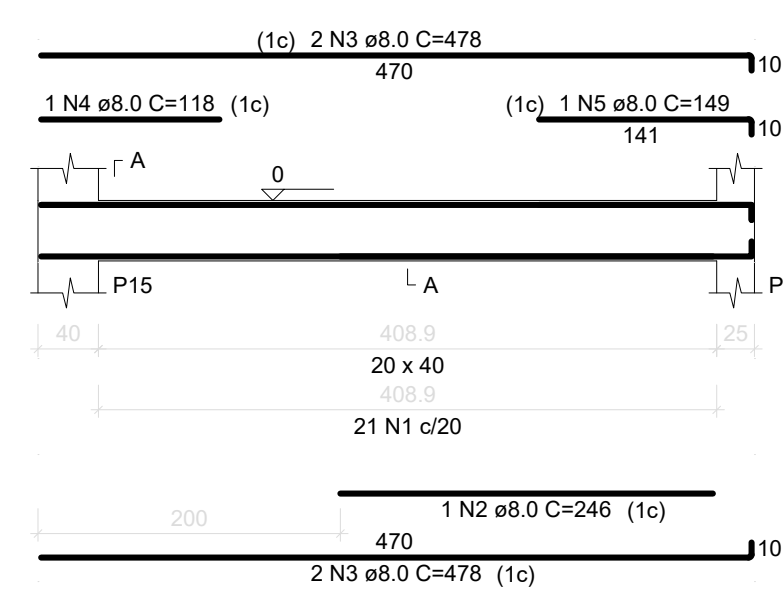
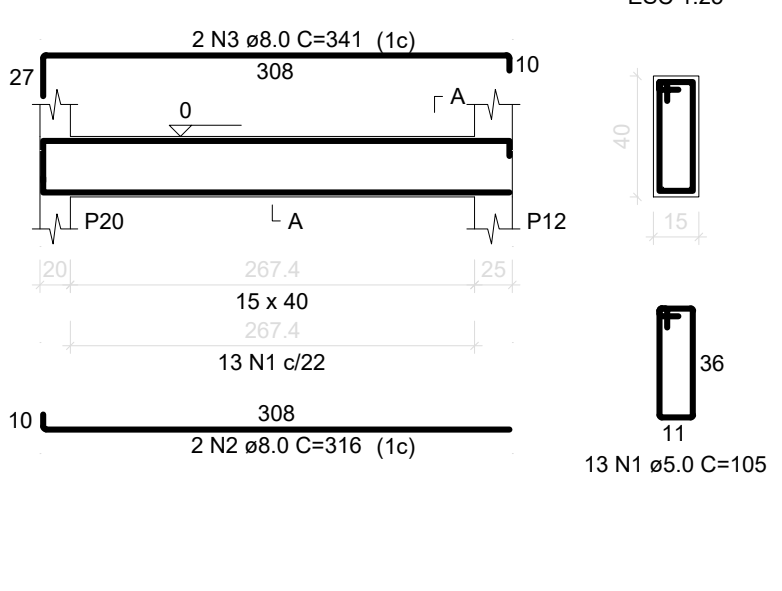


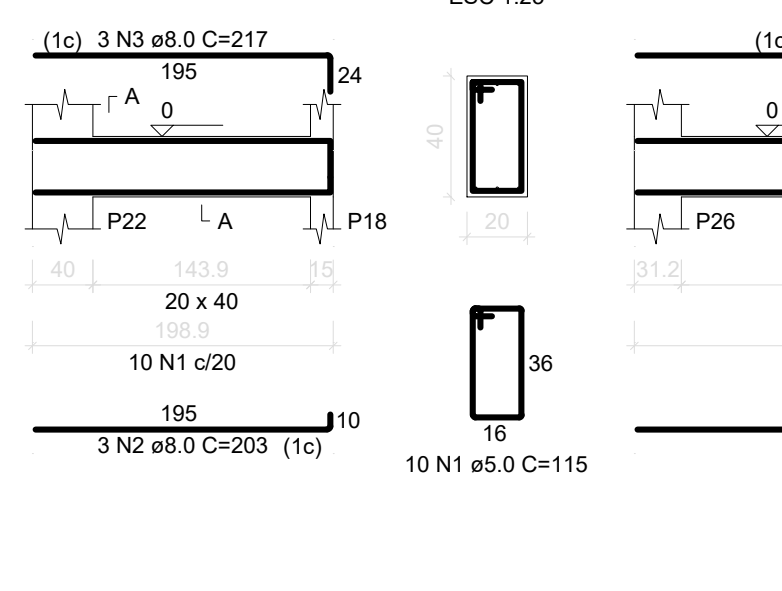
VB42
ESC 1:50



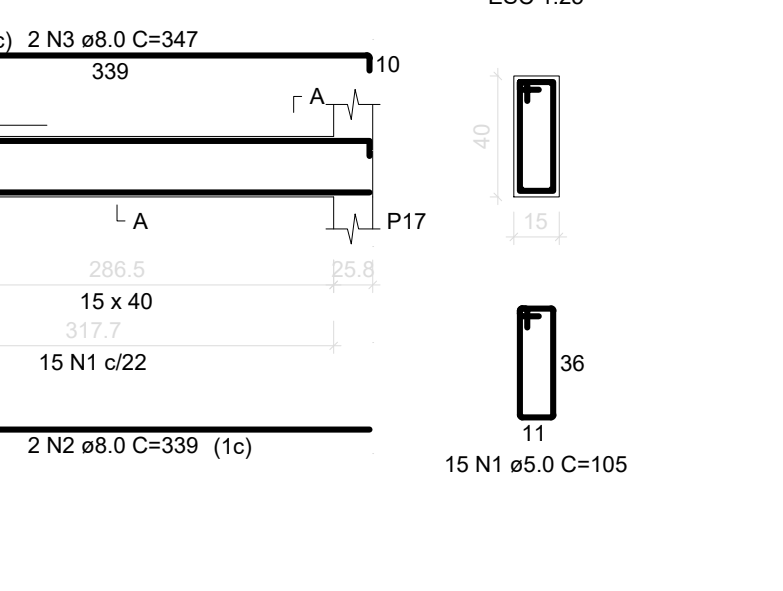
VB43
ESC 1:50



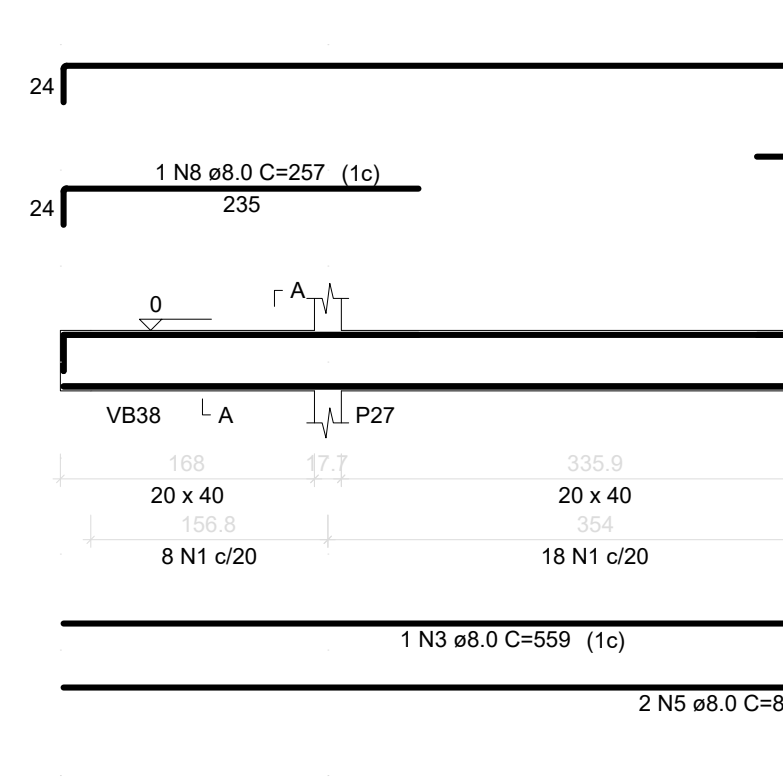
VB44
ESC 1:50



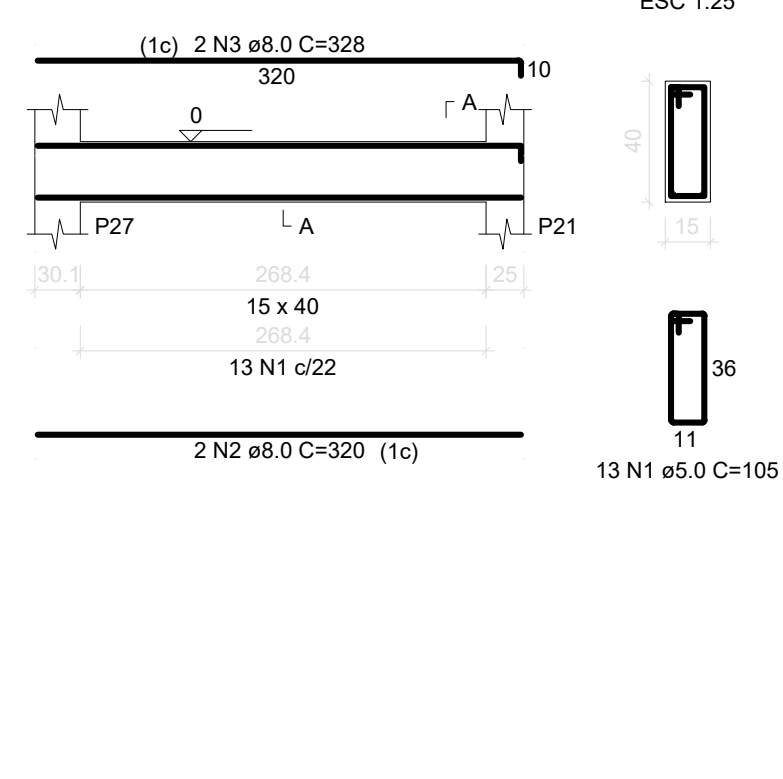
VB45
ESC 1:50



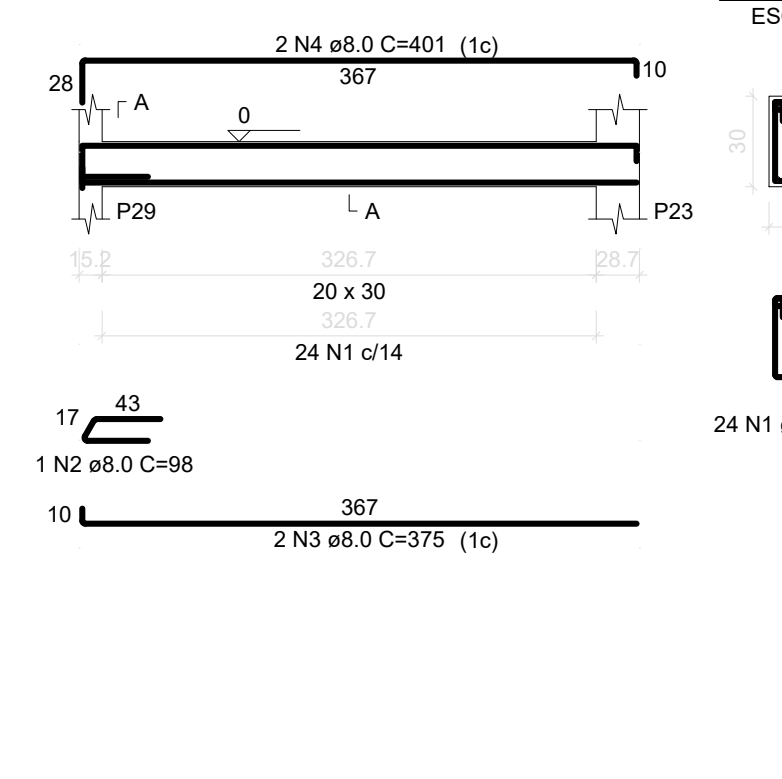
VB46
ESC 1:50



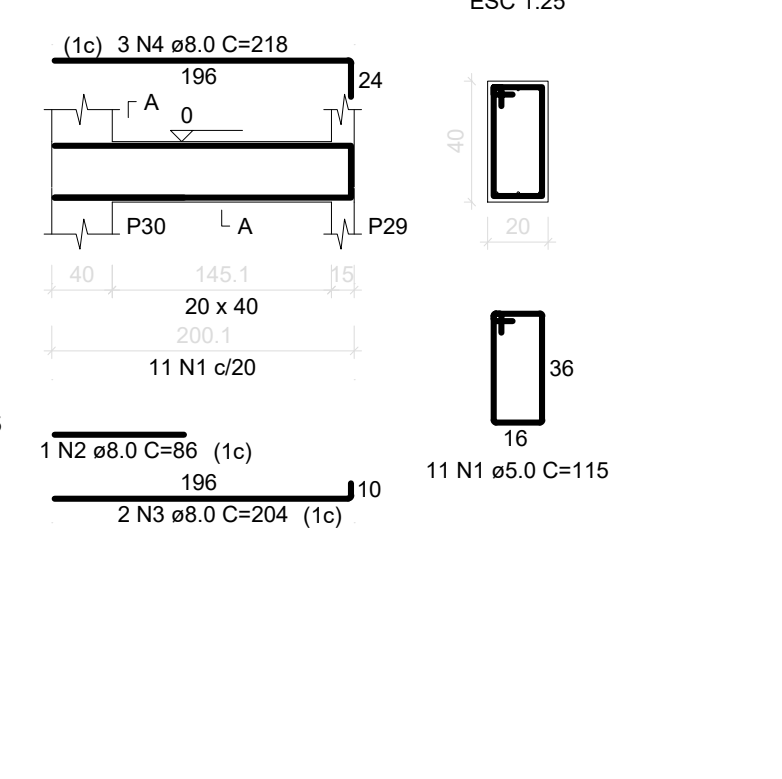
VB47
ESC 1:50



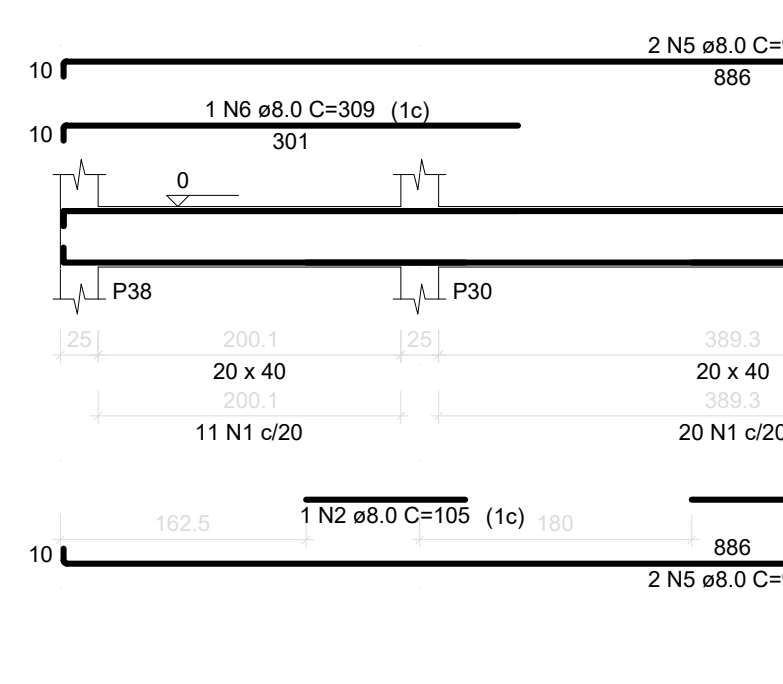
VB48
ESC 1:50



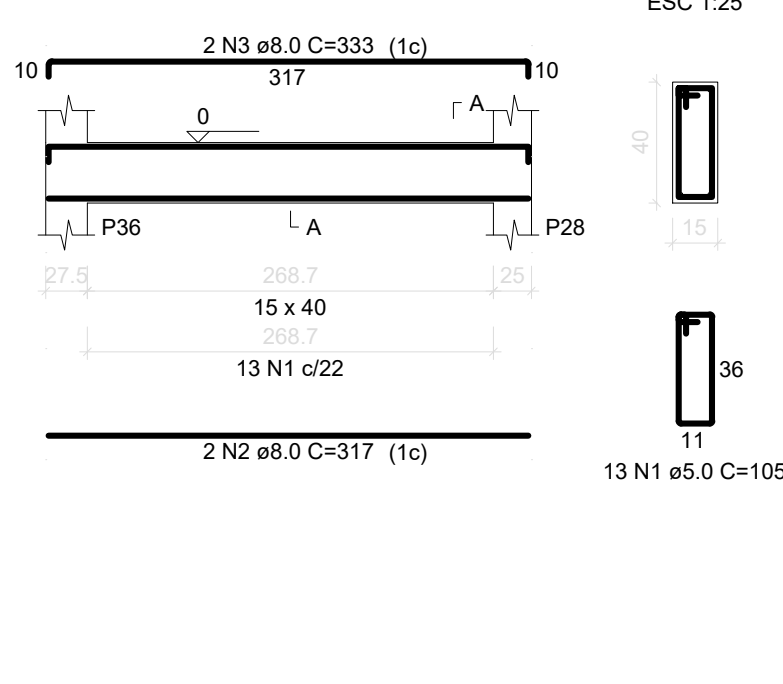
VB49
ESC 1:50



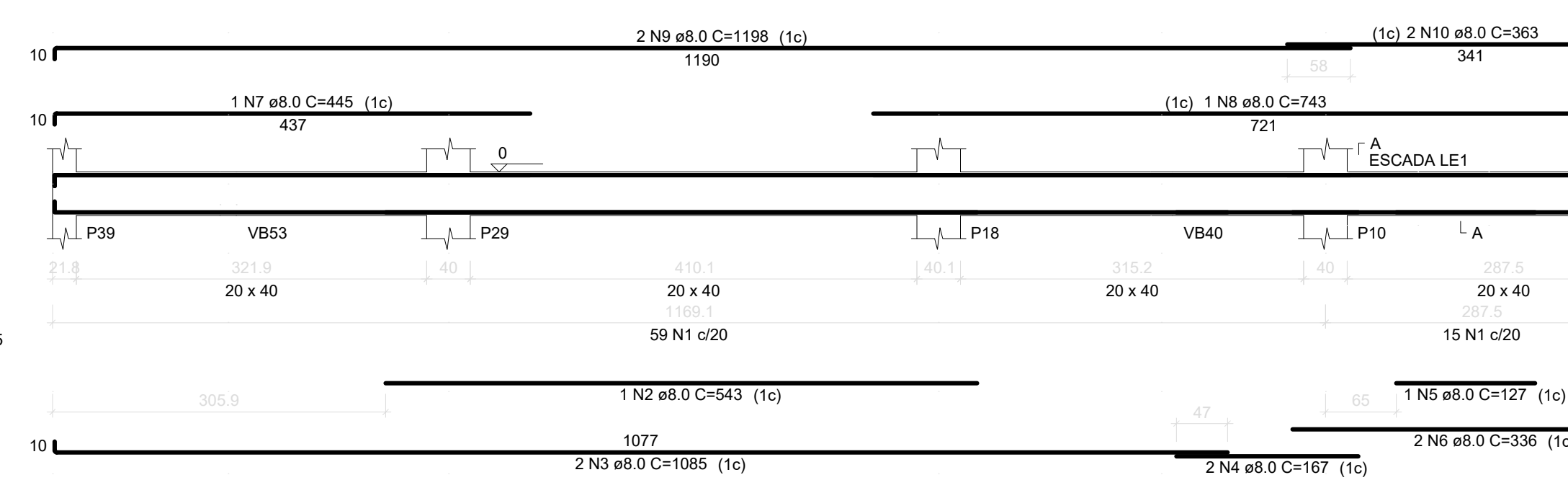
VB50
ESC 1:50



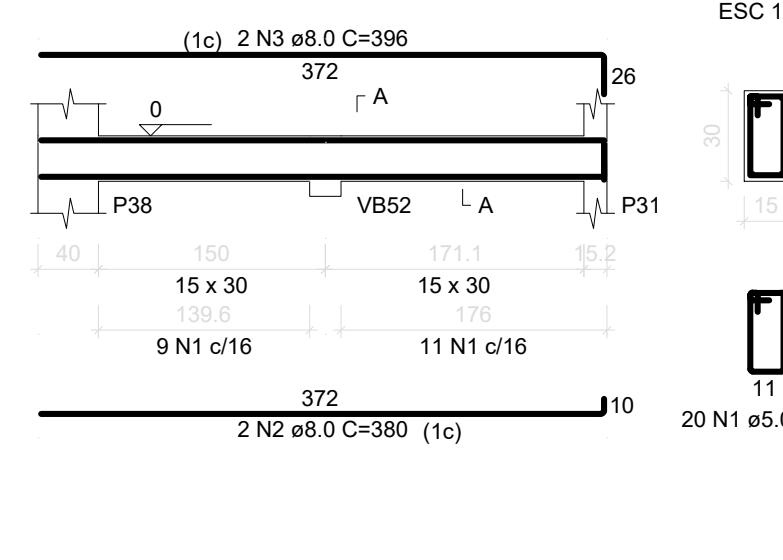
VB51
ESC 1:50



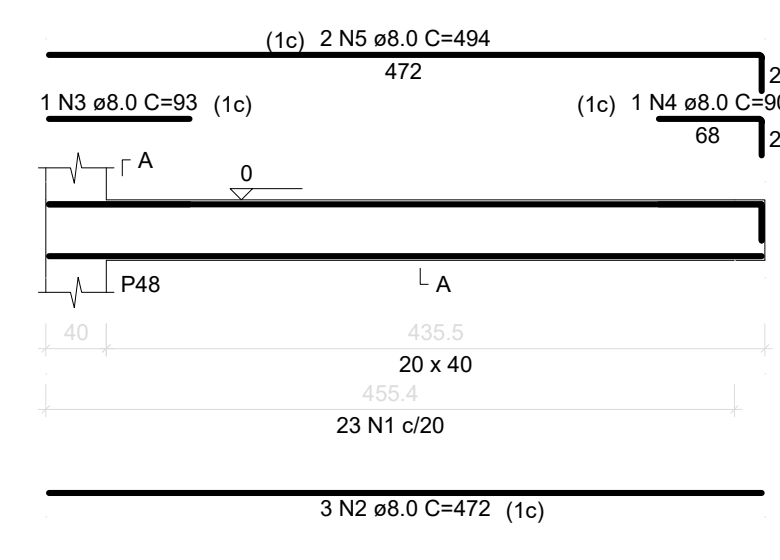
VB52
ESC 1:50



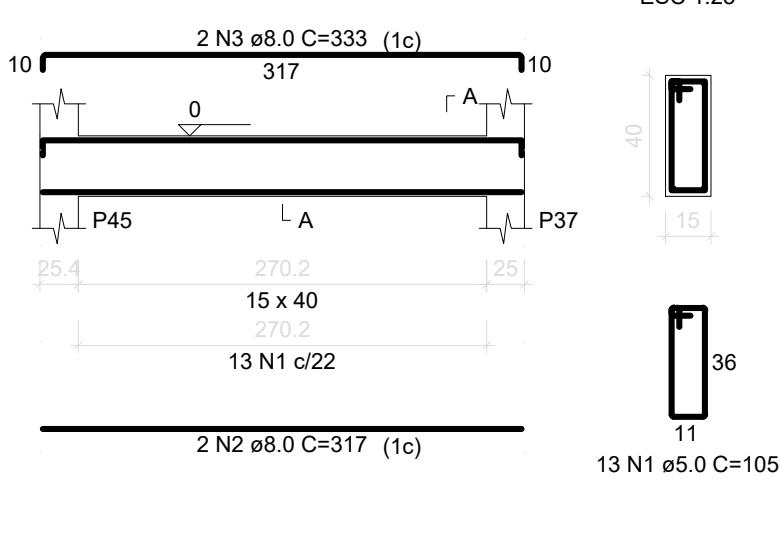
VB53
ESC 1:50



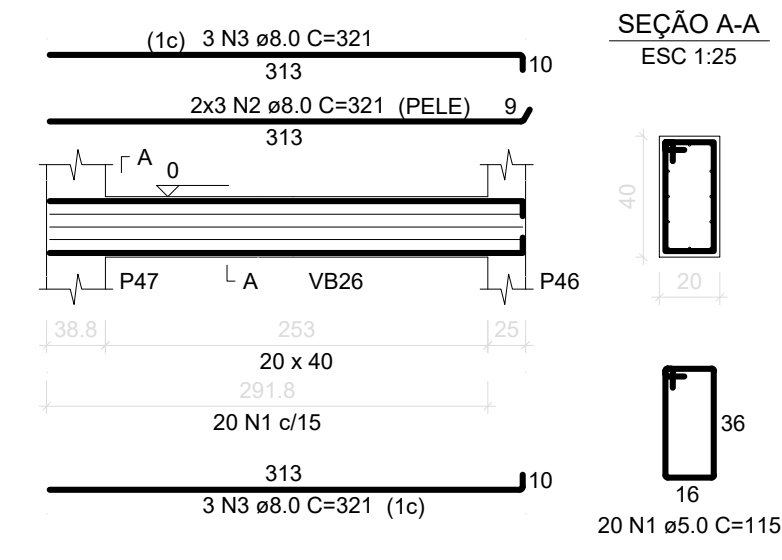
VB54
ESC 1:50



VB55
ESC 1:50



VB56
ESC 1:50



ELEMENTO	AÇO	N	DIAM (mm)	QUANT	C.UNIT (cm)	C.TOTAL (cm)
VB42	CA60	1	5.0	21	115	2415
	CA50	2	8.0	1	246	246
	CA50	3	8.0	4	478	1912
	CA50	4	8.0	1	118	118
	CA50	5	8.0	1	149	149
VB43	CA60	1	5.0	13	105	1365
	CA50	2	8.0	2	316	632
	CA50	3	8.0	2	341	682
	CA60	1	5.0	10	115	1150
	CA50	2	8.0	3	203	609
VB44	CA50	3	8.0	3	217	651
	CA60	1	5.0	15	105	1575
	CA50	2	8.0	2	339	678
	CA50	3	8.0	2	347	694
	CA60	1	5.0	66	115	7590
VB45	CA50	2	8.0	6	391	2346
	CA50	3	8.0	1	559	559
	CA50	4	8.0	1	185	185
	CA50	5	8.0	2	874	1748
	CA50	6	8.0	1	185	185
	CA50	7	8.0	2	415	830
	CA50	8	8.0	1	257	257
	CA50	9	8.0	1	475	475
	CA50	10	8.0	1	79	79
	CA50	11	8.0	2	1131	2262
	CA50	12	8.0	2	169	338
VB46	CA60	1	5.0	13	105	1365
	CA50	2	8.0	2	320	640
	CA50	3	8.0	2	328	656
	CA60	1	5.0	24	95	2280
	CA50	2	8.0	1	98	98
VB47	CA50	3	8.0	2	375	750
	CA50	4	8.0	2	401	802
	CA60	1	5.0	11	115	1265
	CA50	2	8.0	1	86	86
	CA50	3	8.0	2	204	408
VB48	CA50	4	8.0	3	218	654
	CA60	1	5.0	42	115	4830
	CA50	2	8.0	1	105	105
	CA50	3	8.0	1	264	264
	CA50	4	8.0	1	94	94
VB49	CA50	5	8.0	4	902	3608
	CA50	6	8.0	1	309	309
	CA50	7	8.0	1	269	269
	CA60	1	5.0	13	105	1365
	CA50	2	8.0	2	317	634
VB50	CA50	3	8.0	2	333	666
	CA60	1	5.0	74	115	8510
	CA50	2	8.0	1	543	543
	CA50	3	8.0	2	1085	2170
	CA50	4	8.0	2	167	334
VB51	CA50	5	8.0	1	127	127
	CA50	6	8.0	2	336	672
	CA50	7	8.0	1	445	445
	CA50	8	8.0	1	743	743
	CA50	9	8.0	2	1198	2396
VB52	CA50	10	8.0	2	363	726
	CA60	1	5.0	20	85	1700
	CA50	2	8.0	2	380	760
	CA50	3	8.0	2	396	792
	CA60	1	5.0	23	115	2645
VB53	CA50	2	8.0	3	472	1416
	CA50	3	8.0	1	93	93
	CA50	4	8.0	1	90	90
	CA50	5	8.0	2	494	988
	CA60	1	5.0	13	105	1365
VB54	CA50	2	8.0	2	317	634
	CA50	3	8.0	2	333	666
	CA60	1	5.0	20	115	2300
	CA50	2	8.0	6	321	1926
	CA50	3	8.0	6	321	1926

RESUMO DO AÇO			
AÇO	DIAM (mm)	C.TOTAL (m)	PESO + 10% (kg)
CA50	8.0	431.6	187.3
CA60	5.0	417.2	70.7
PESO TOTAL (kg)			
CA50		187.3	
CA60		70.7	

Volume de concreto (C-25) = 5.58 m³
Área de forma = 73.84 m²



PREFEITURA MUNICIPAL DE MURIAÉ
SECRETARIA MUNICIPAL DE OBRAS PÚBLICAS

PROJETO ESTRUTURAL

PROJETO VIGAS BALDRAMES 3 - 3

PREFEITURA DE MURIAÉ / CNPJ: 17.947.581/0001-76
PREFEITO IOANNIS KONSTANTINOS GRAMMATIKOPOULOS

DESCRIÇÃO:
PROJETO ESTRUTURAL PARA CONSTRUÇÃO DE UMA UBS NO BARRIO INCONFIDENCIA

SECRETARIA DE OBRAS PÚBLICAS
CARLOS MAGNO DE OLIVEIRA

LOCAL: RUA CLAUDIO MANOEL DA COSTA ESQUINA COM A RUA ALVARENGA PEIKOTO - B. INCONFIDENCIA - MURIAÉ - MG
ARQUIVO: PROJ. ESTRUTURAL UBS INCONFIDENCIA - DWG

R. T. PROJETO:
LEONARDO DA SILVA
ENGRº CIVIL - CREA RJ 2017103206/D

ESC. INDICADAS
DATA: JULHO/2020