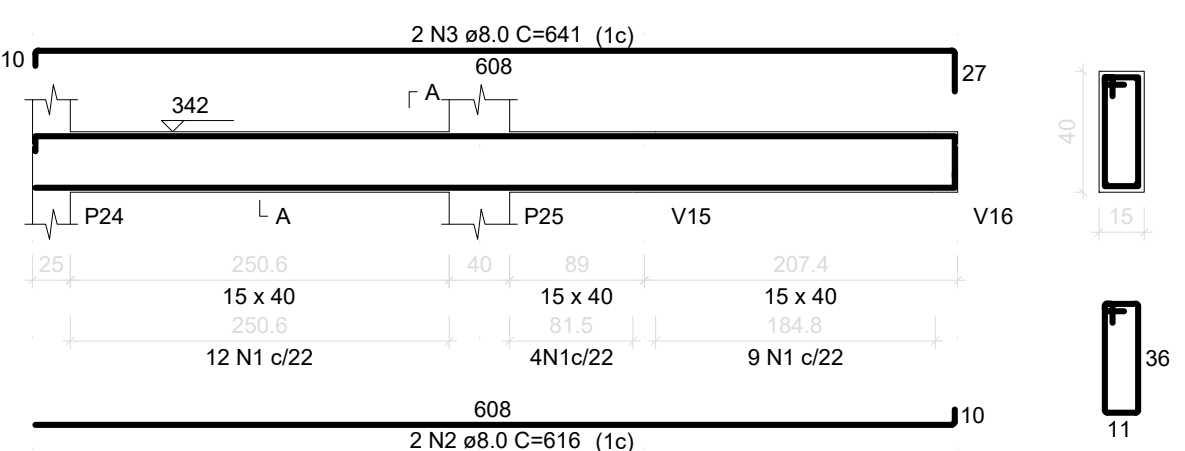
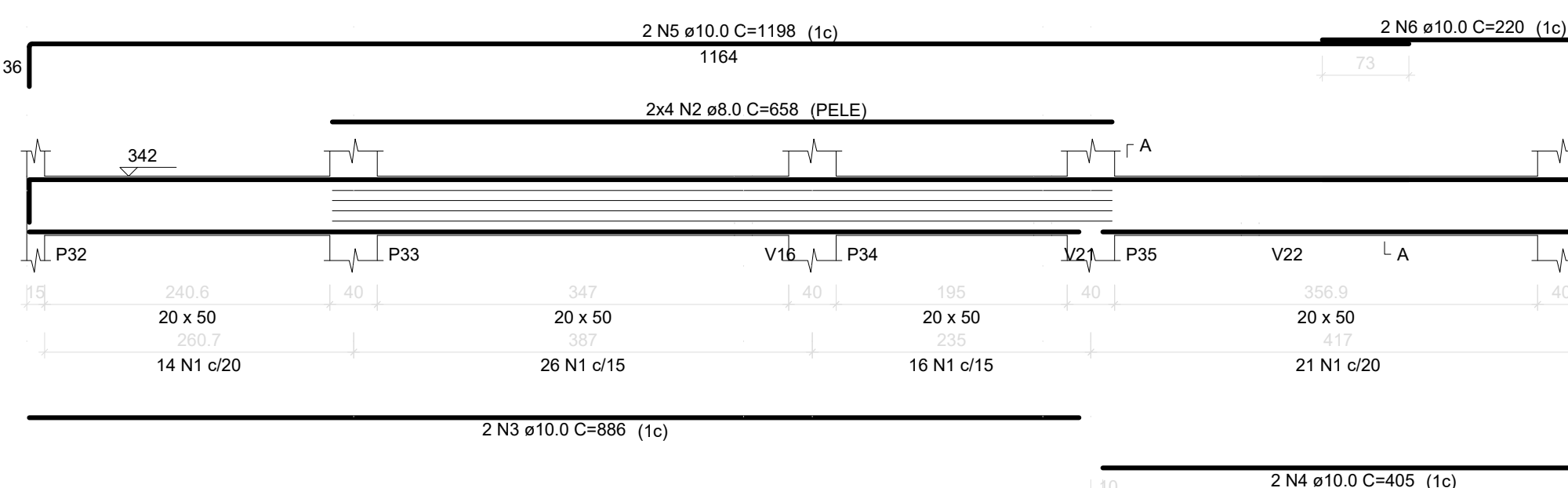


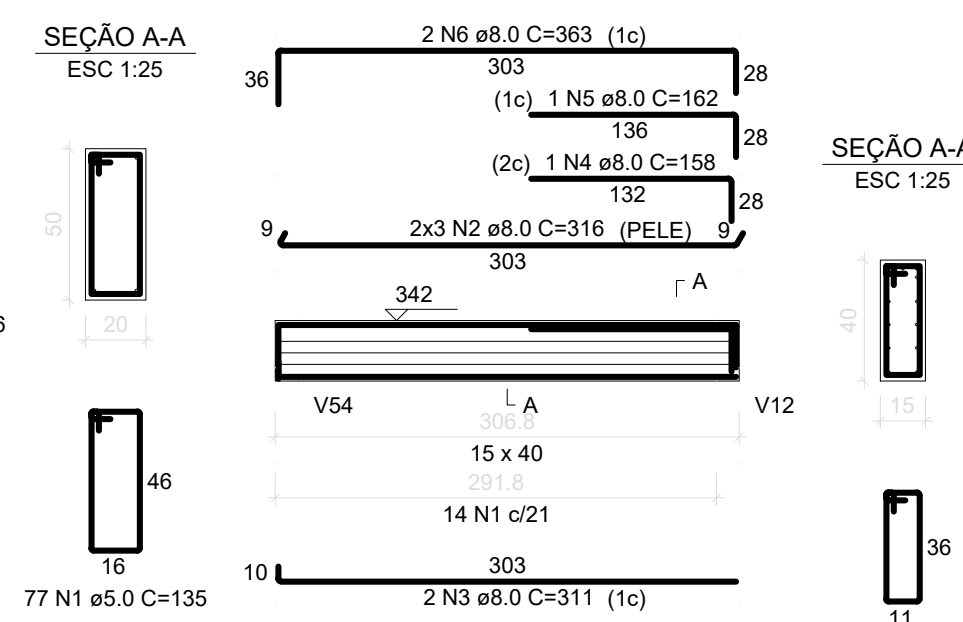
V1
ESC 1:50



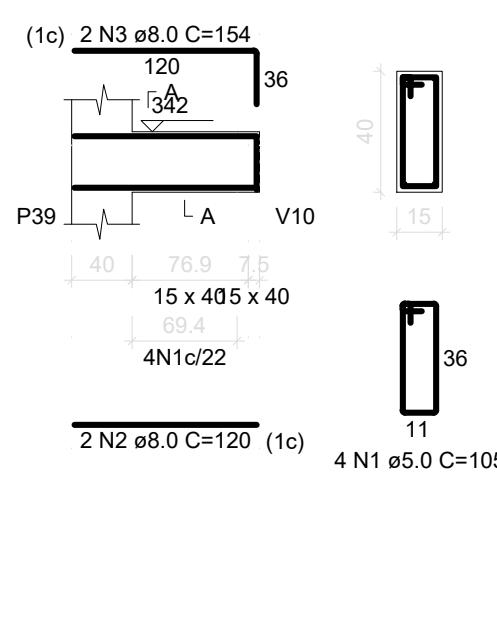
V2
ESC 1:50



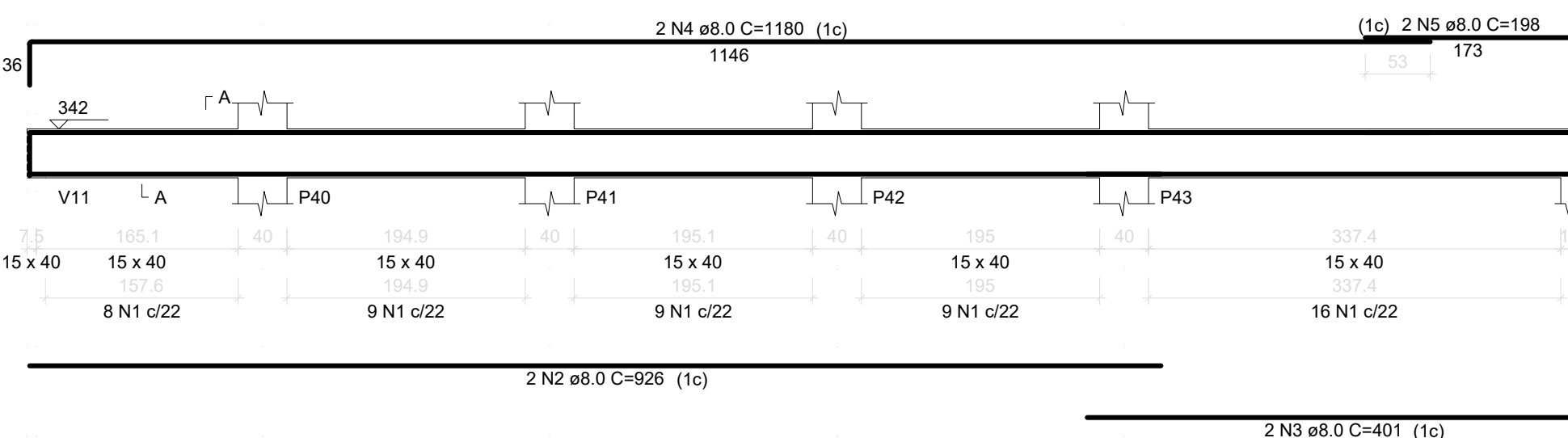
V3
ESC 1:50



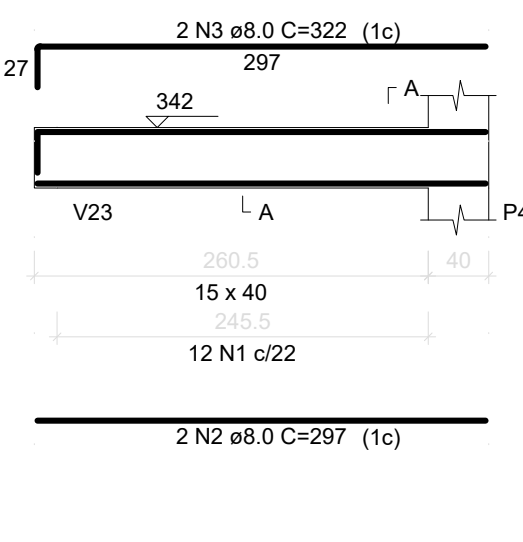
V4
ESC 1:50



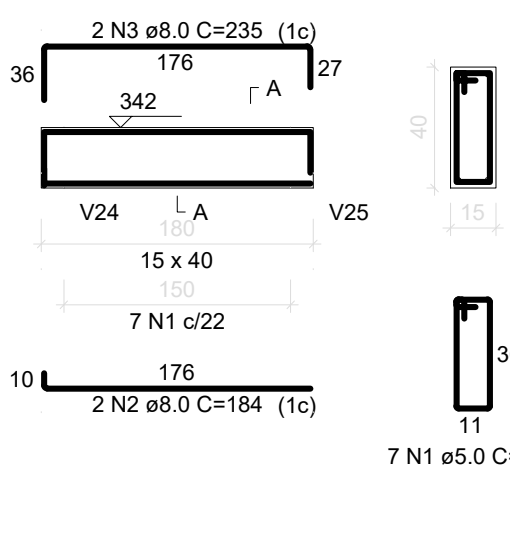
V5
ESC 1:50



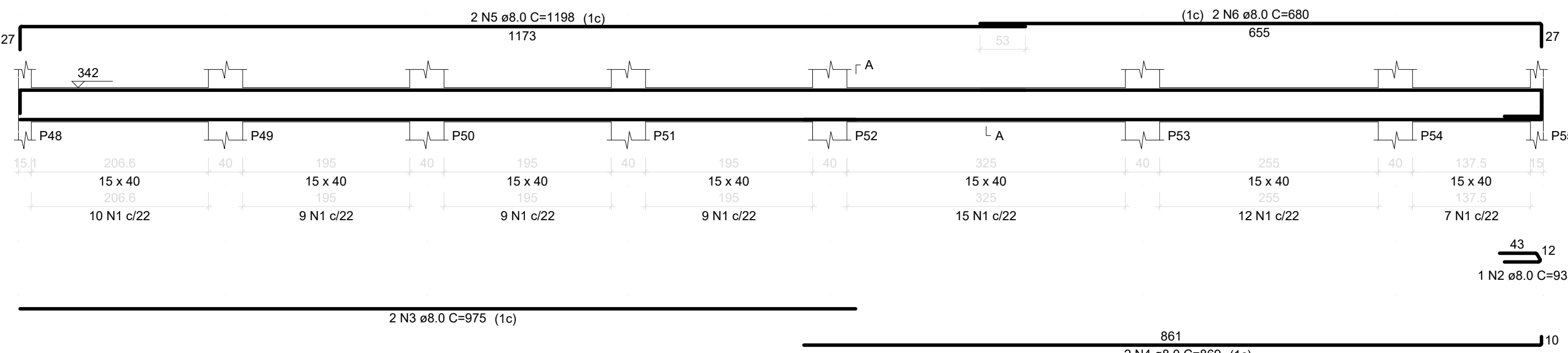
V6
ESC 1:50



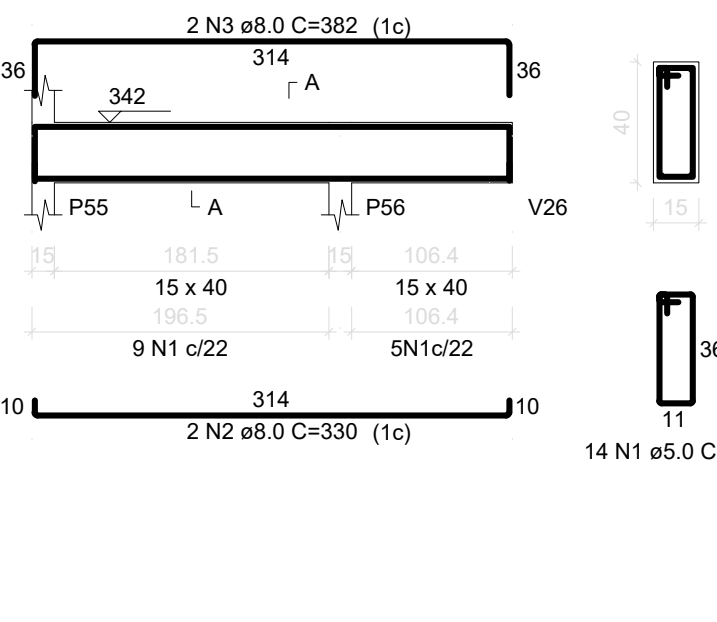
V7
ESC 1:50



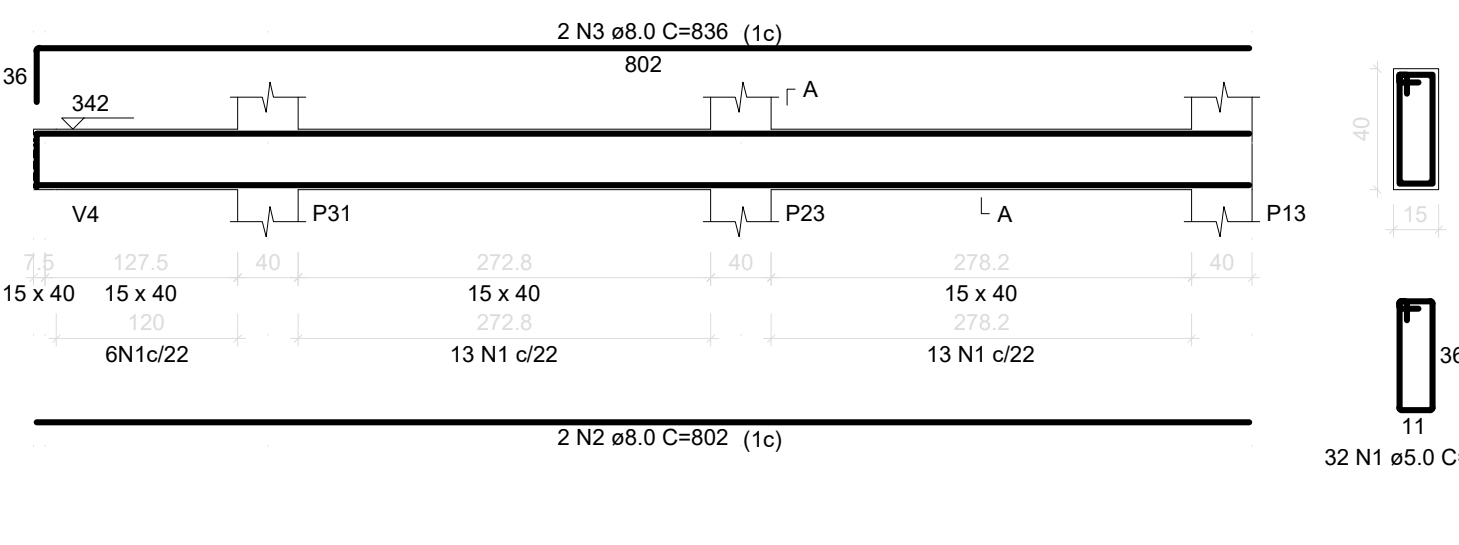
V8
ESC 1:50



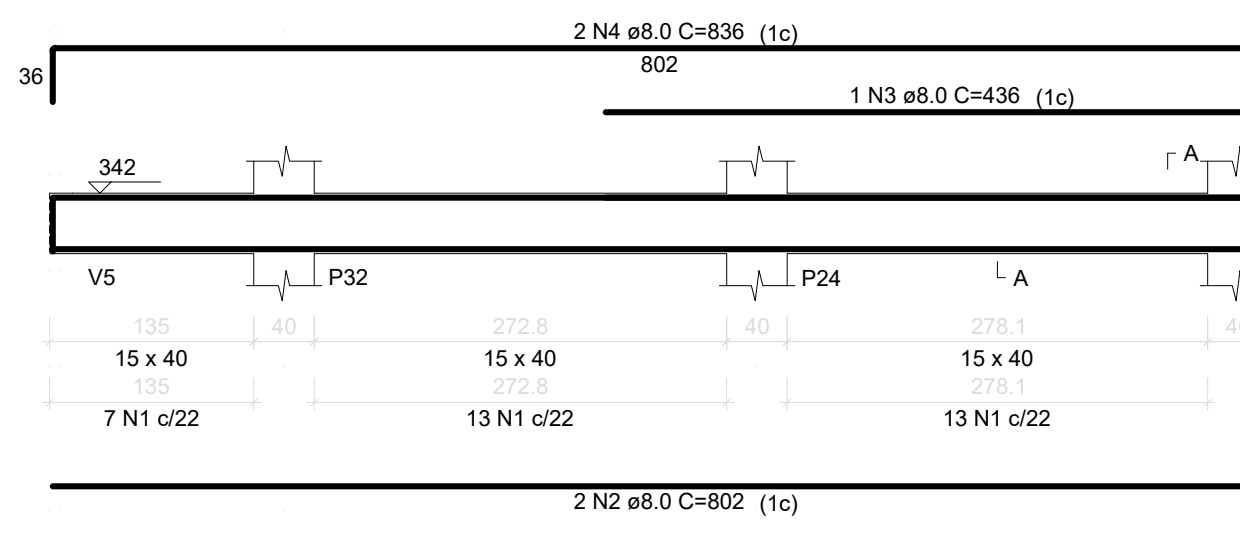
V9
ESC 1:50



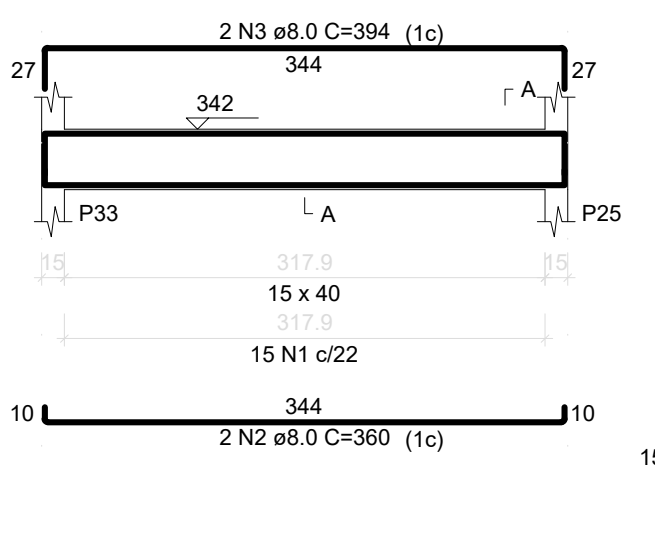
V10
ESC 1:50



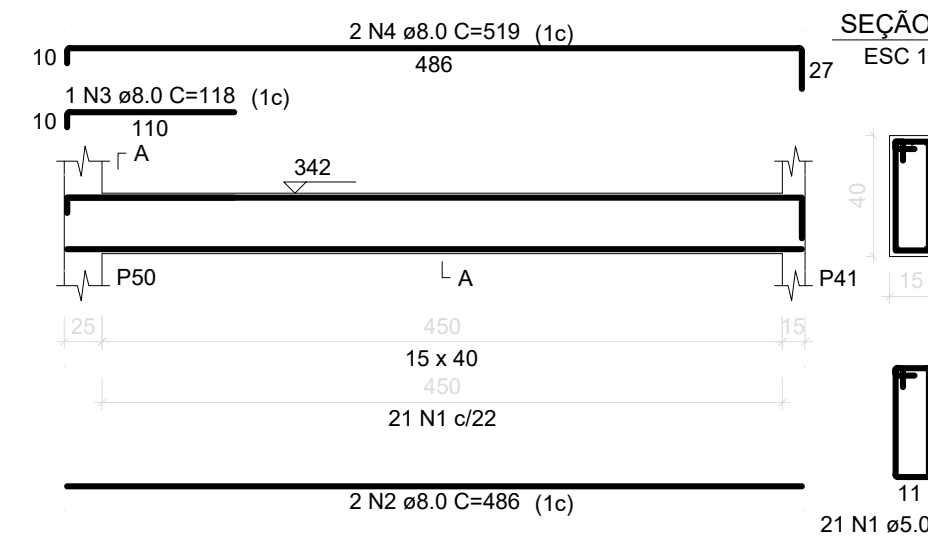
V11
ESC 1:50



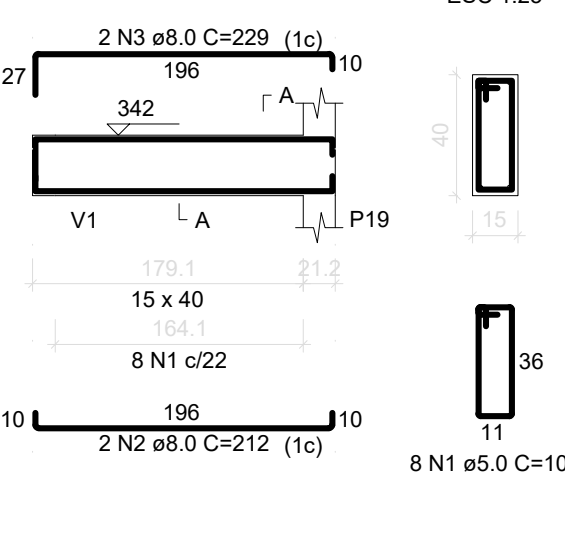
V13
ESC 1:50



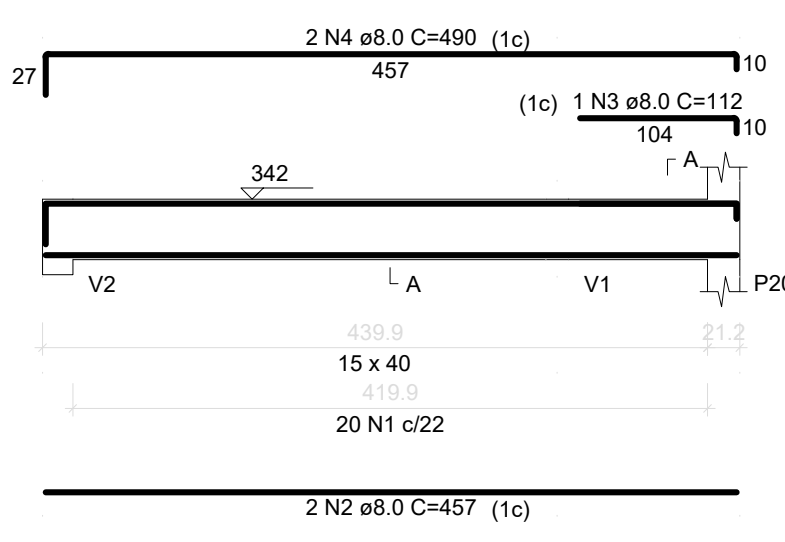
V12=V14
ESC 1:50



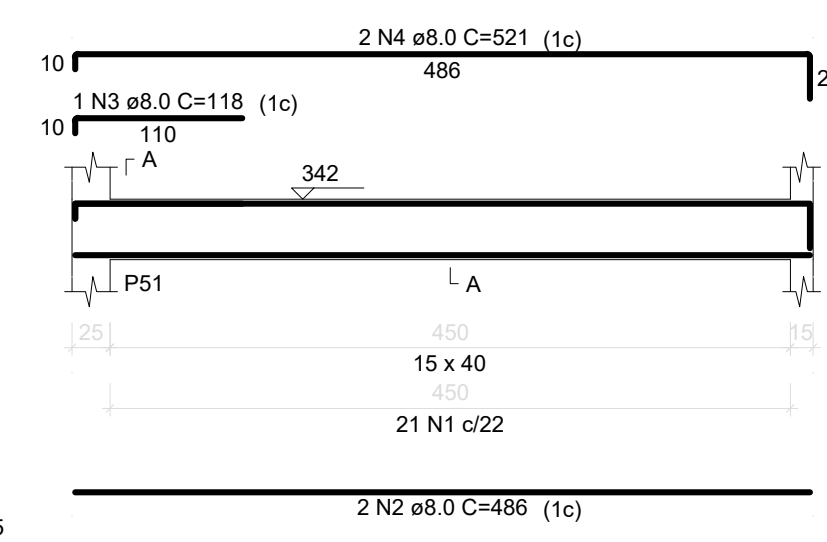
V15
ESC 1:50



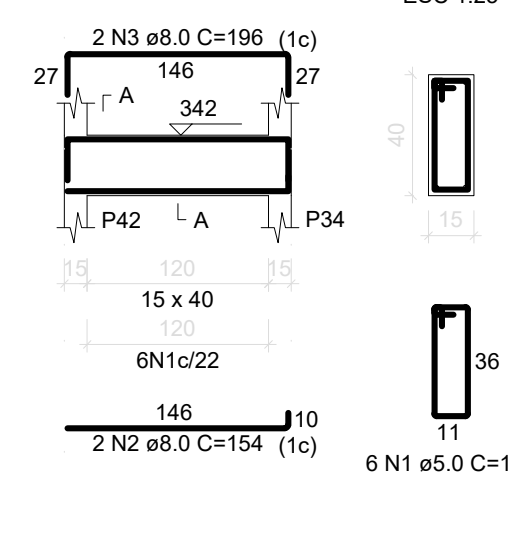
V16
ESC 1:50



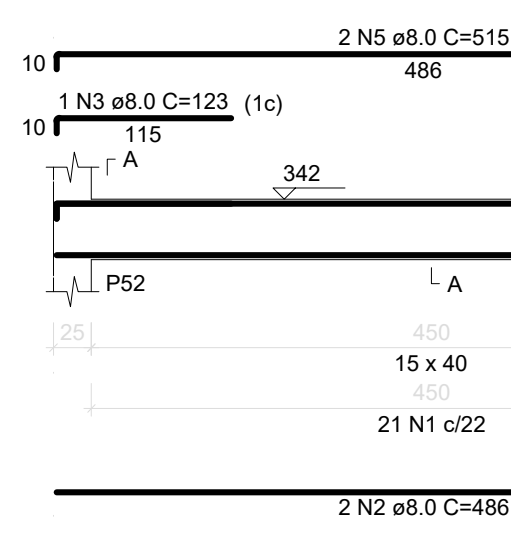
V17
ESC 1:50



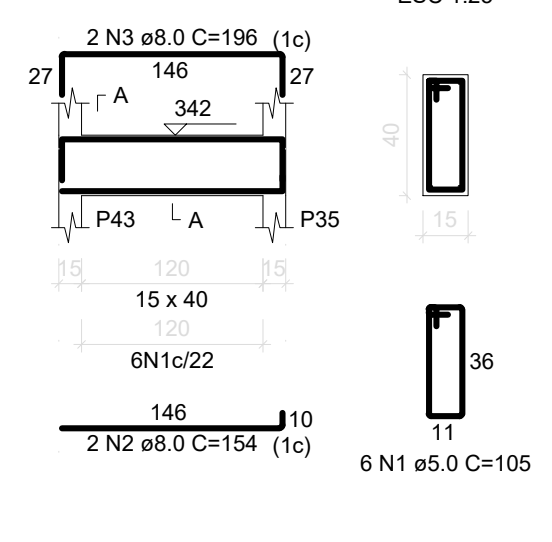
V18
ESC 1:50



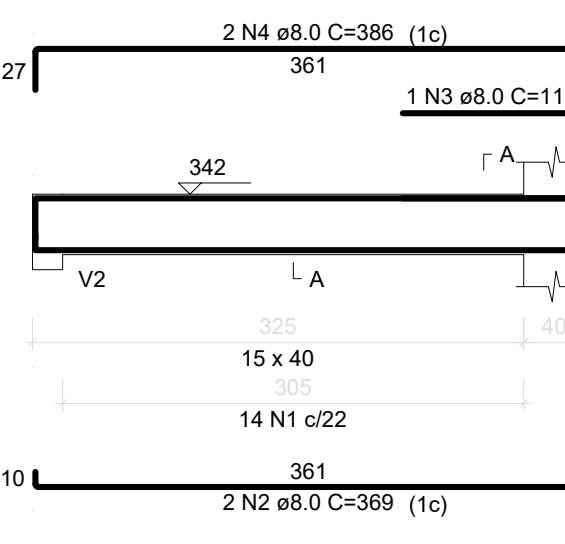
V19
ESC 1:50



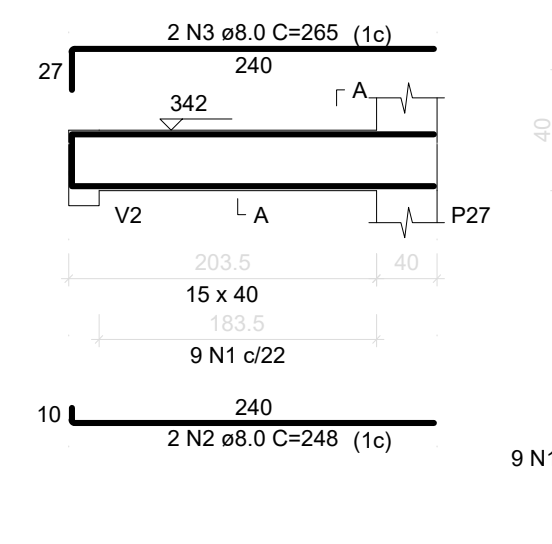
V20
ESC 1:50



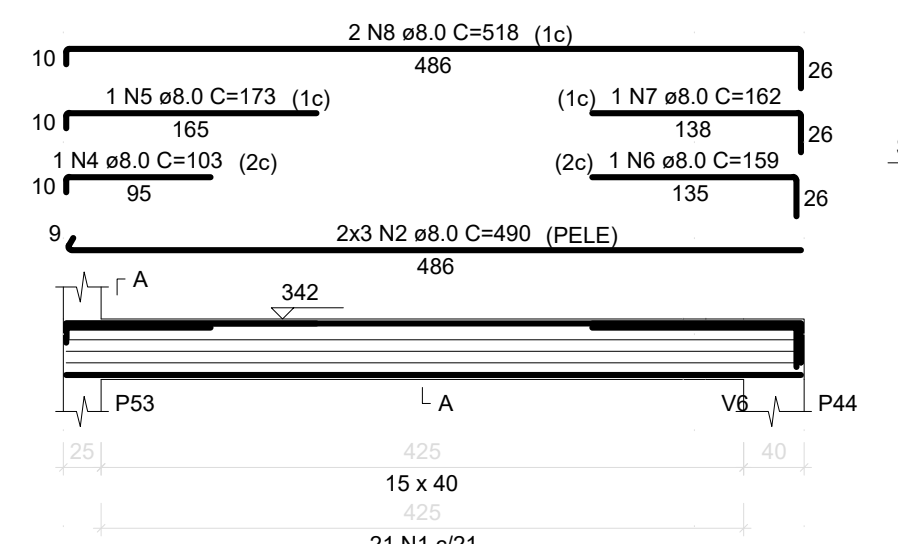
V21
ESC 1:50



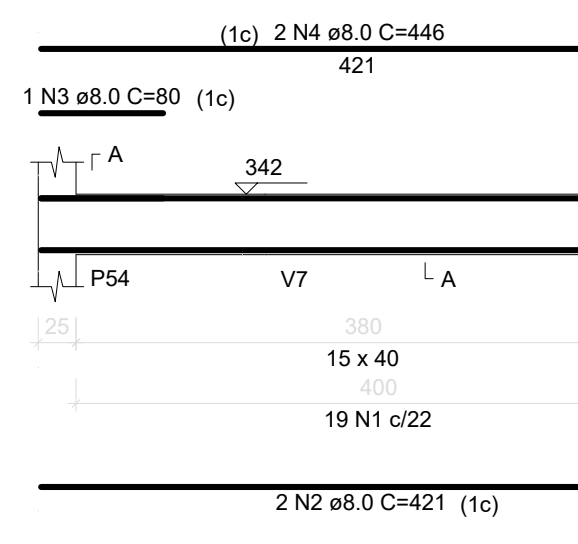
V22
ESC 1:50



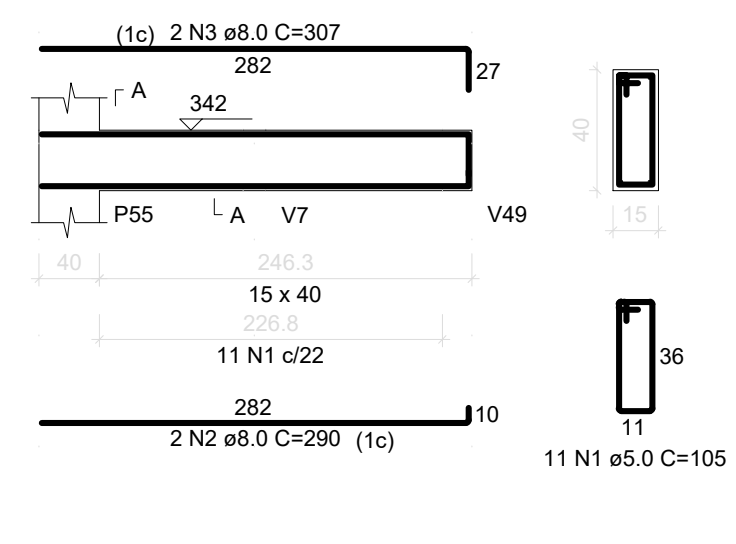
V23
ESC 1:50



V24
ESC 1:50



V25
ESC 1:50



RELAÇÃO DO AÇO

ELEMENTO	AÇO	N	DIAM (mm)	QUANT	C UNIT (cm)	C TOTAL (cm)
V1	CA60	1	5.0	25	105	2625
	CA50	2	8.0	2	616	1232
	CA50	3	8.0	2	641	1282
V2	CA60	1	5.0	77	135	10395
	CA50	2	8.0	8	658	5264
	CA50	3	10.0	2	886	1772
	CA50	4	10.0	2	405	810
	CA50	5	10.0	2	1198	2396
	CA50	6	10.0	2	220	440
V3	CA60	1	5.0	14	105	1470
	CA50	2	8.0	0	311	1896
	CA50	3	8.0	0	311	622
	CA50	4	8.0	1	158	158
	CA50	5	8.0	1	162	162
V4	CA60	1	5.0	2	363	726
	CA50	2	8.0	2	120	240
	CA50	3	8.0	2	154	308
	CA60	5.0	51	105	5355	
	CA50	2	8.0	2	526	1852
	CA50	3	8.0	2	401	702
	CA50	4	8.0	2	1180	2360
	CA50	5	8.0	2	198	396
	CA60	1	5.0	12	105	1260
	CA50	2	8.0	2	297	594
	CA50	3	8.0	2	322	644
V7	CA60	1	5.0	7	105	735
	CA50	2	8.0	2	235	470
	CA50	3	8.0	2	184	368
	CA50	4	8.0	1	93	93
	CA50	5	8.0	2	869	1738
	CA50	6	8.0	2	1198	2396
	CA50	7	8.0	2	690	1380
V8	CA60	1	5.0	14	105	1470
	CA50	2	8.0	2	507	1014
	CA50	3	8.0	2	382	764
	CA50	4	8.0	2	360	720
	CA50	5	8.0	2	836	1672
	CA50	6	8.0	3	105	315
	CA50	7	8.0	2	802	1604
	CA50	8	8.0	2	436	872
	CA50	9	8.0	2	838	1676
	CA50	10	8.0	2	360	720
	CA50	11	8.0	2	394	788
	CA50	12	8.0	21	105	2205
	CA50	13	8.0	2	486	972
	CA50	14	8.0	2	118	118
	CA50	15	8.0	2	519	1038
	CA50	16	8.0	2	457	914
	CA50	17	8.0	1	112	112
	CA50	18	8.0	2	490	980
	CA50	19	8.0	21	105	2205
	CA50	20	8.0	2	486	972
	CA50	21	8.0	2	116	116
	CA50	22	8.0	2	321	642
	CA60	1	5.0	6	105	630
	CA50	2	8.0	2	154	308
	CA50	3	8.0	2	196	392
	CA50	4	8.0	21	105	2205
	CA50	5	8.0	1	122	122
	CA50	6	8.0	2	515	1030
	CA50	7	8.0	2	369	738
	CA50	8	8.0	2	154	308
	CA50	9	8.0	2	369	738
	CA50	10	8.0	1	118	118
	CA50	11	8.0	2	386	772
	CA60	1	5.0	9	105	945
	CA50	2	8.0	2	248	496
	CA50	3	8.0	2	295	590
	CA60	1	5.0	21	105	2205
	CA50	2	8.0	2	490	980
	CA50	3	8.0	2	486	972
	CA50	4	8.0	1	103	103
	CA50	5	8.0	1	173	173
	CA50	6	8.0	1	159	159
	CA50	7	8.0	1	162	162
	CA50	8	8.0	2	518	1036
	CA50	9	8.0	2	440	880
	CA50	10	8.0	2	290	580
	CA50	11	8.0	2	307	614

RESUMO DO AÇO

AÇO	DIAM (mm)	C. TOTAL (m)	PESO + 10% (kg)
CA50	8.0	588.4	255.4
CA60	5.0	581.7	98.6
PESO TOTAL (kg)			
CA50		292.1	738
CA60		98.6	118

Volume de concreto (C-25) = 7.97 m³
Área de forma = 121.15 m²

PREFEITURA MUNICIPAL DE MURIAÉ
SECRETARIA MUNICIPAL DE OBRAS PÚBLICAS

PROJETO ESTRUTURAL

PROJETO VIGAS DO TERREO 1 - 3

PREFEITURA DE MURIAÉ / CNPJ: 17.947.981/0001-76
PREFEITO ICANIS KONSTANTINOS GRAMMATIKOPOULOS

SECRETARIA DE OBRAS PÚBLICAS
CARLOS MAGNO DE OLIVEIRA

R. T. PROJETO: LEONARDO DA SILVA
ENGRº CIVIL - CREA RJ: 2017/03206/0

DESCRIÇÃO: PROJETO ESTRUTURAL PARA CONSTRUÇÃO DE UMA UBS NO BARRIO INCONFIDENCIA

LOCAL: RUA CLAUDIO MANOEL DA COSTA,ESQUINA COM A RUA ALVARENGA PEREOTO & INCONFIDENCIA - MURIAÉ - MG

ARQUIVO: PROJETESTRUTURAL UBS INCONFIDENCIA - DWG

ESQ. INDICADAS: DATA: JULHO/2020

FOLHA: **20/34**