

P1=P2=P3=P4=P5=P6=P8=P9=P11

P7=P10

P7=P10

Relação do aço

Baldrame: 9xP1 2xP7
 Mureta: 9xP1 2xP7

AÇO	N	DIAM	Q	UNIT (cm)	C.TOTAL (cm)
CA60	1	5.0	126	72	9072
	2	5.0	28	78	2184
CA50	3	10.0	44	VAR	VAR
	4	10.0	44	57	2508

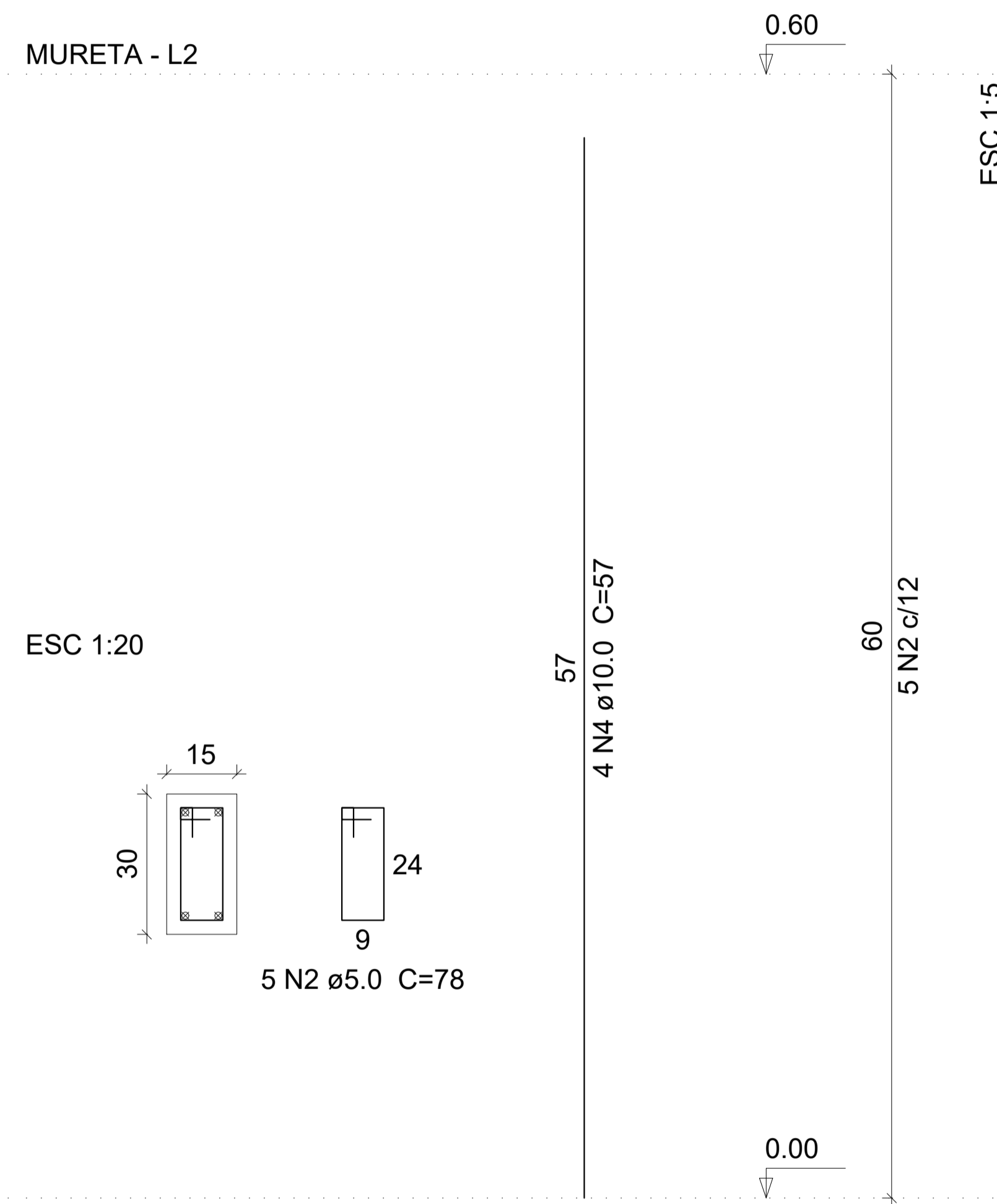
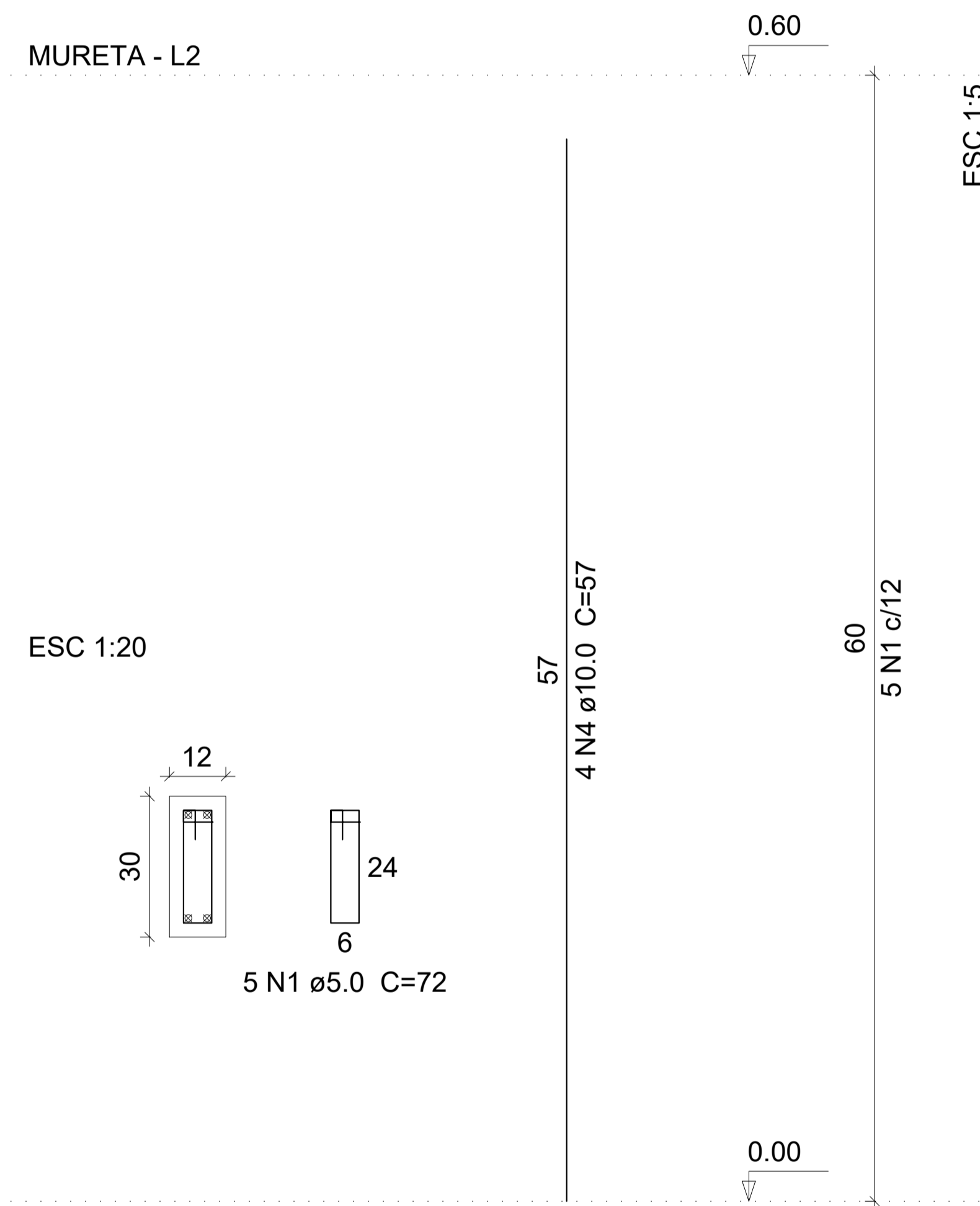
Resumo do aço

AÇO	DIAM	C.TOTAL (m)	PESO + 10 % (kg)
CA50	10.0	93.8	63.6
CA60	5.0	112.6	19.1
PESO TOTAL			
CA50	63.6		
CA60	19.1		

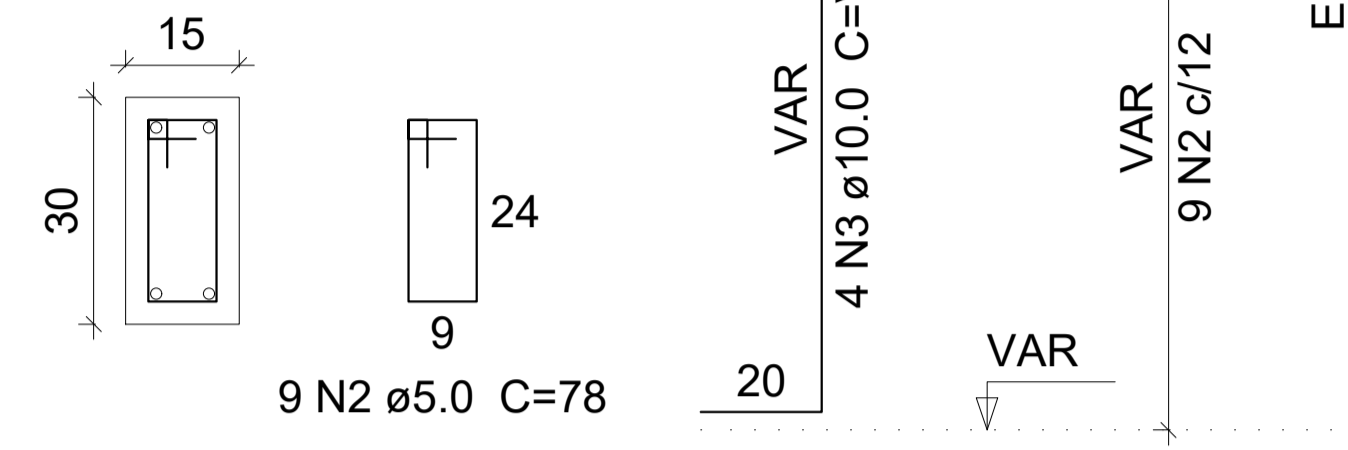
Vol. de concreto total (C-25) = 0.66 m³
 Área de forma total = 14.98 m²

MURETA - L2

MURETA - L2

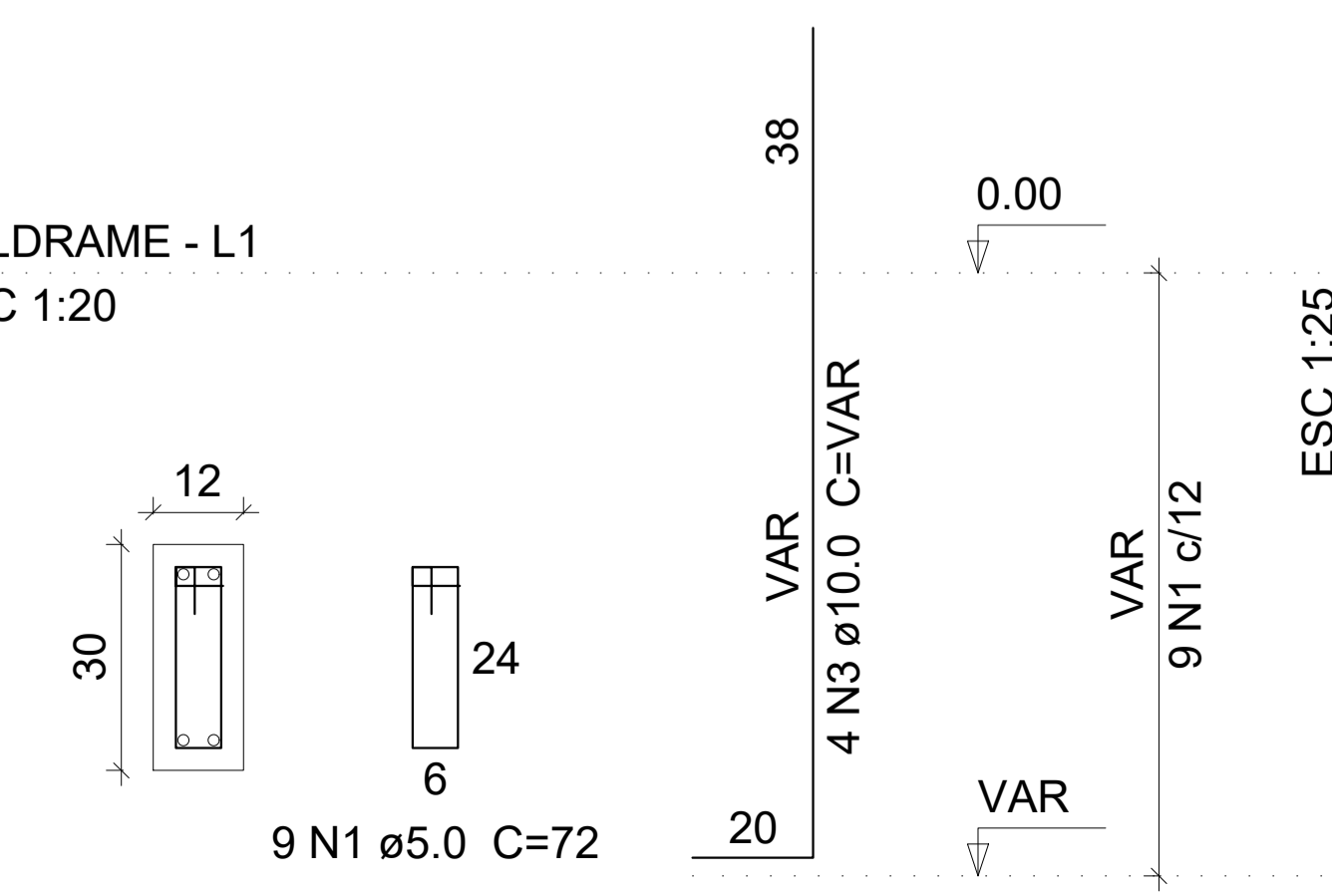



BALDRAME - L1
 ESC 1:20



P1=P2=P3=P4=P5=P6=P8=P9=P11

BALDRAME - L1
 ESC 1:20



 PREFEITURA MUNICIPAL DE MURIAÉ SECRETARIA DE EDUCAÇÃO		PROJETO ESTRUTURAL PARA REFORMA DA ESCOLA MUNICIPAL JOSÉ MIGUEL MUAHAD		
		PREFEITURA DE MURIAÉ / CNPJ: 17.947.581/0001-76	LOCAL: PRAÇA PREFEITO PAULO CARVALHO, Nº 100 - BARRA - MURIAÉ/MG	ARQUIVO: PILAR.DWG
PREFEITO IOANNIS KONSTANTINOS GRAMMATIKOPOULOS	SECRETARIA DE EDUCAÇÃO: MARIA DE CONCEIÇÃO RODRIGUES DE SOUZA	R. T. PROJETO: JOSÉ RICARDO PAUL PEDROSA CREA MG 201025/D	ESC: INDICADAS DATA: 06/2020	FOLHA: 03/04