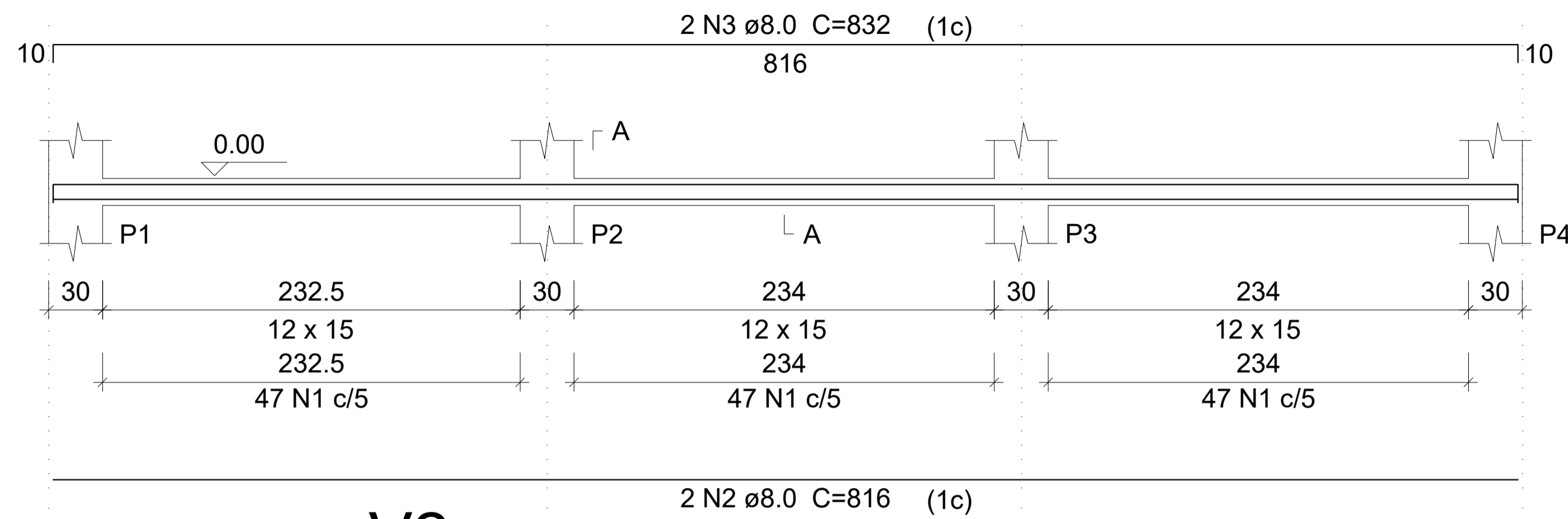


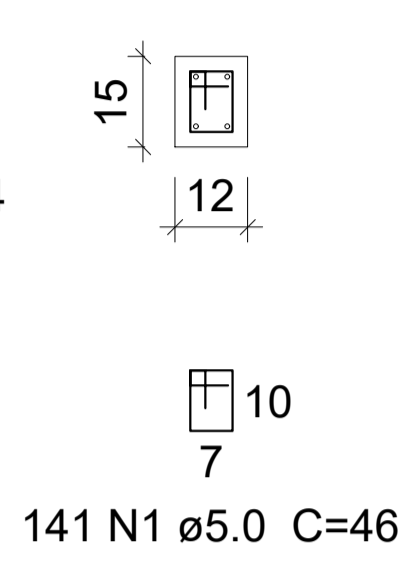
V1

ESC 1:50



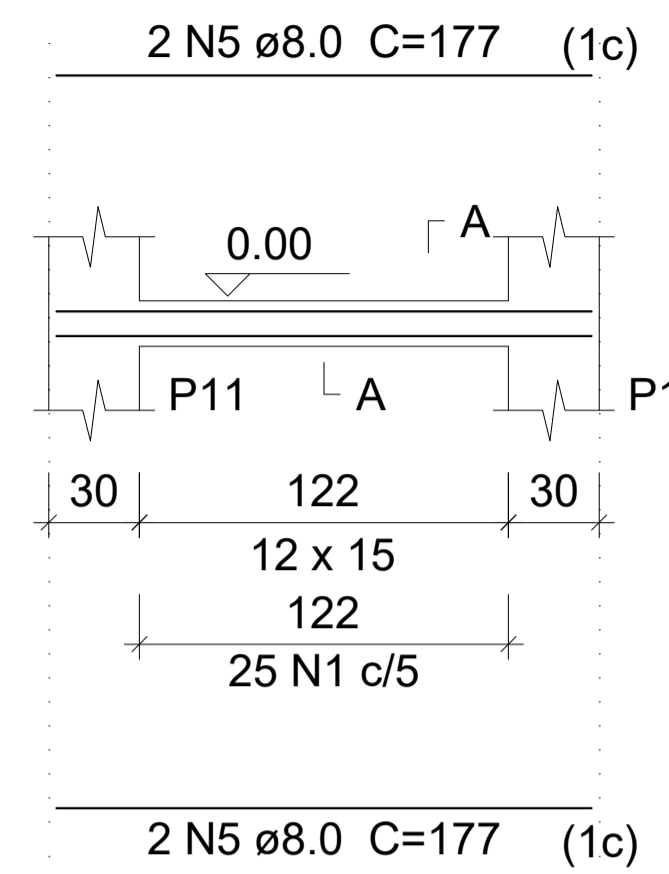
SEÇÃO A-A

ESC 1:25



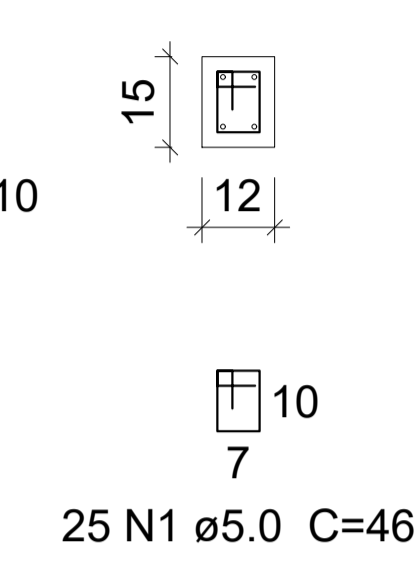
V4

ESC 1:50



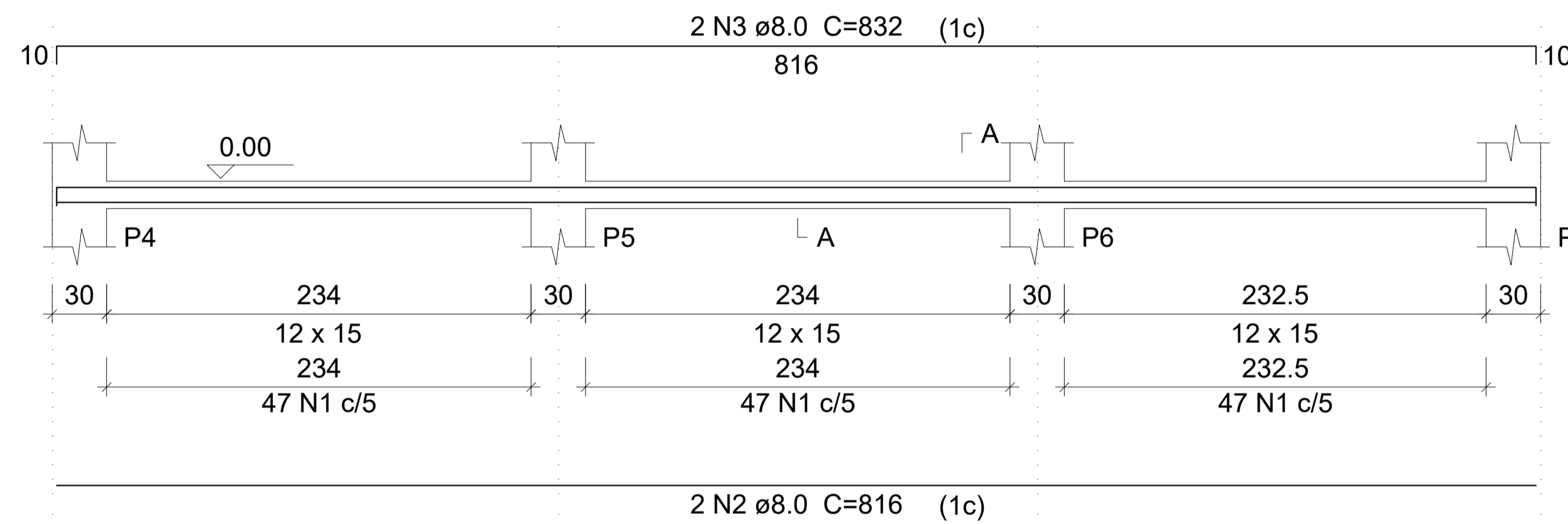
SEÇÃO A-A

ESC 1:25



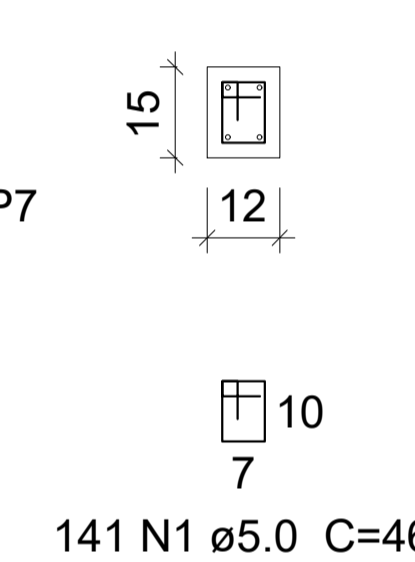
V2

ESC 1:50



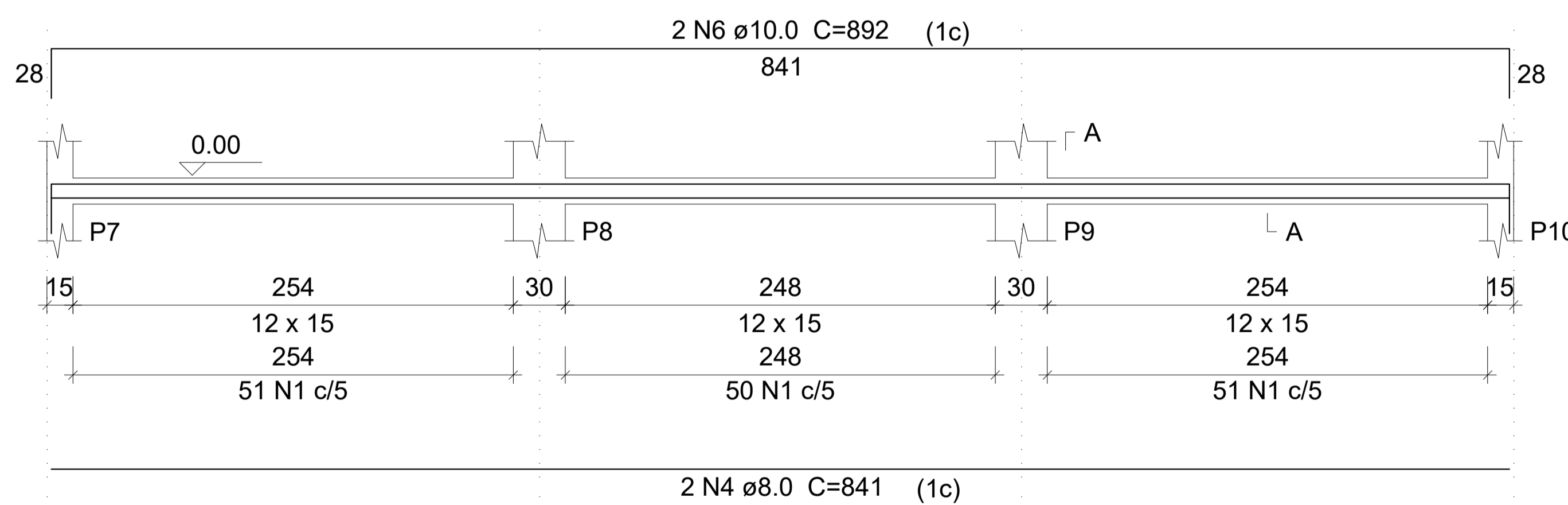
SEÇÃO A-A

ESC 1:25



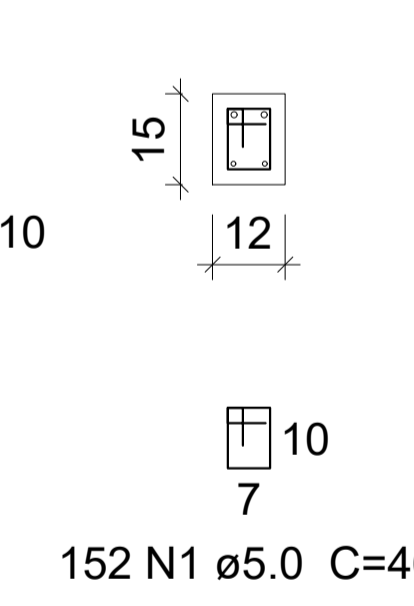
V3

ESC 1:50



SEÇÃO A-A

ESC 1:25



Relação do aço

AÇO	N	DIAM	Q	UNIT (cm)	C.TOTAL (cm)
CA60	1	5.0	459	46	21114
CA50	2	8.0	4	816	3264
	3	8.0	4	832	3328
	4	8.0	2	841	1682
	5	8.0	4	177	708
	6	10.0	2	892	1784

Resumo do aço

AÇO	DIAM	C.TOTAL (m)	PESO + 10 % (kg)
CA50	8.0	89.9	39
	10.0	17.9	12.1
CA60	5.0	211.2	35.8
PESO TOTAL			
CA50		51.1	
CA60		35.8	

Vol. de concreto total (C-25) = 0.48 m³
Área de forma total = 11.21 m²



PREFEITURA MUNICIPAL DE MURIAÉ
SECRETARIA DE EDUCAÇÃO

PROJETO ESTRUTURAL PARA REFORMA DA ESCOLA MUNICIPAL JOSÉ MIGUEL MUAHAD

PREFEITURA DE MURIAÉ / CNPJ: 17.947.581/0001-76	LOCAL: PRAÇA PREFEITO PAULO CARVALHO, Nº 100 - BARRA - MURIAÉ/MG
PREFEITO IOANNIS KONSTANTINOS GRAMMATIKOPOULOS	ARQUIVO: VIGA.DWG
SECRETARIA DE DE EDUCAÇÃO:	CONTEÚDO: DETALHAMENTO ESTRUTURA VIGA
MARIA DE CONCEIÇÃO RODRIGUES DE SOUZA	
R. T. PROJETO: JOSÉ RICARDO PAUL PEDROSA CREA MG 201025/D	ESC: INDICADAS DATA: 06/2020
	FOLHA: 04/04