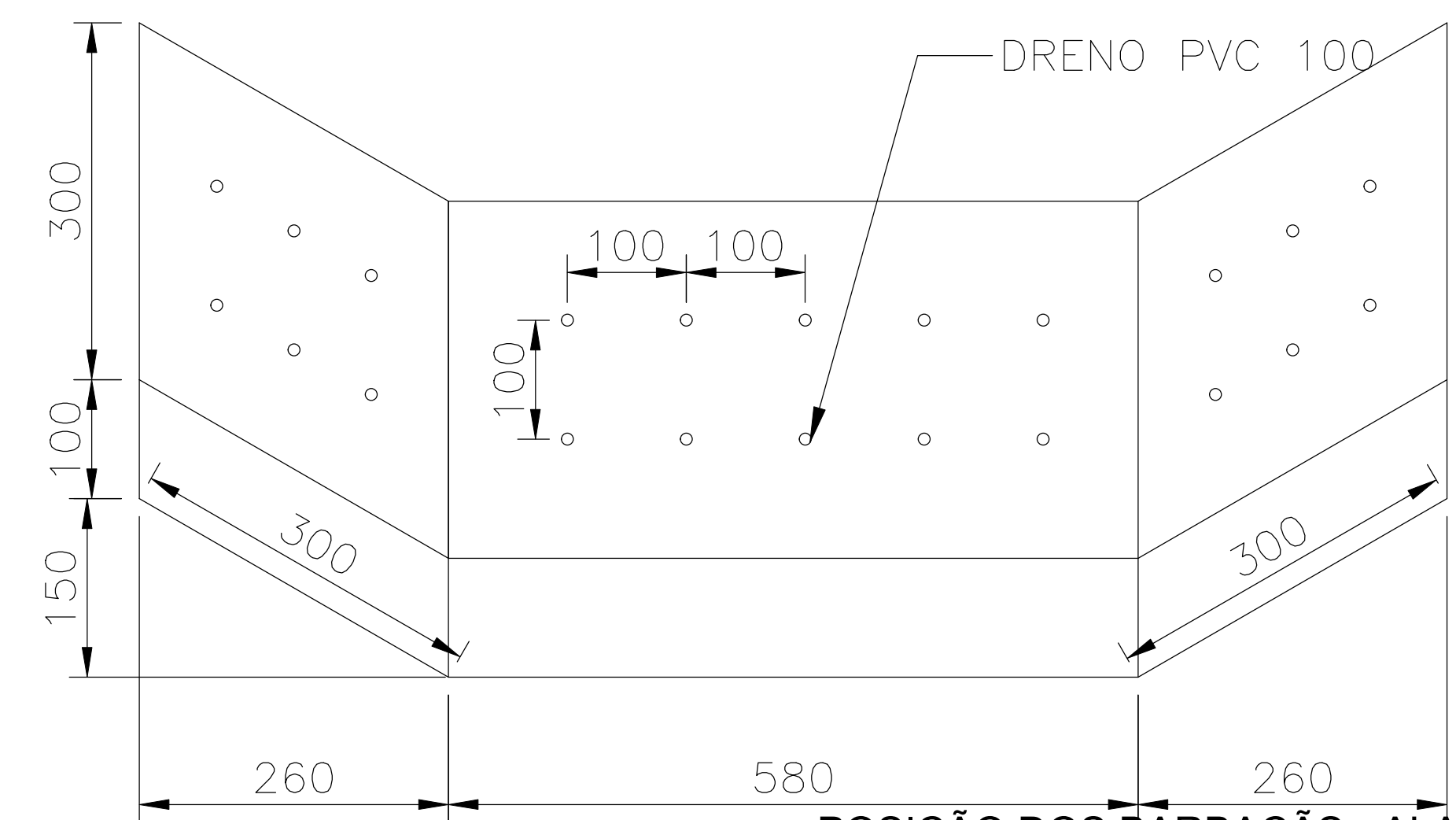
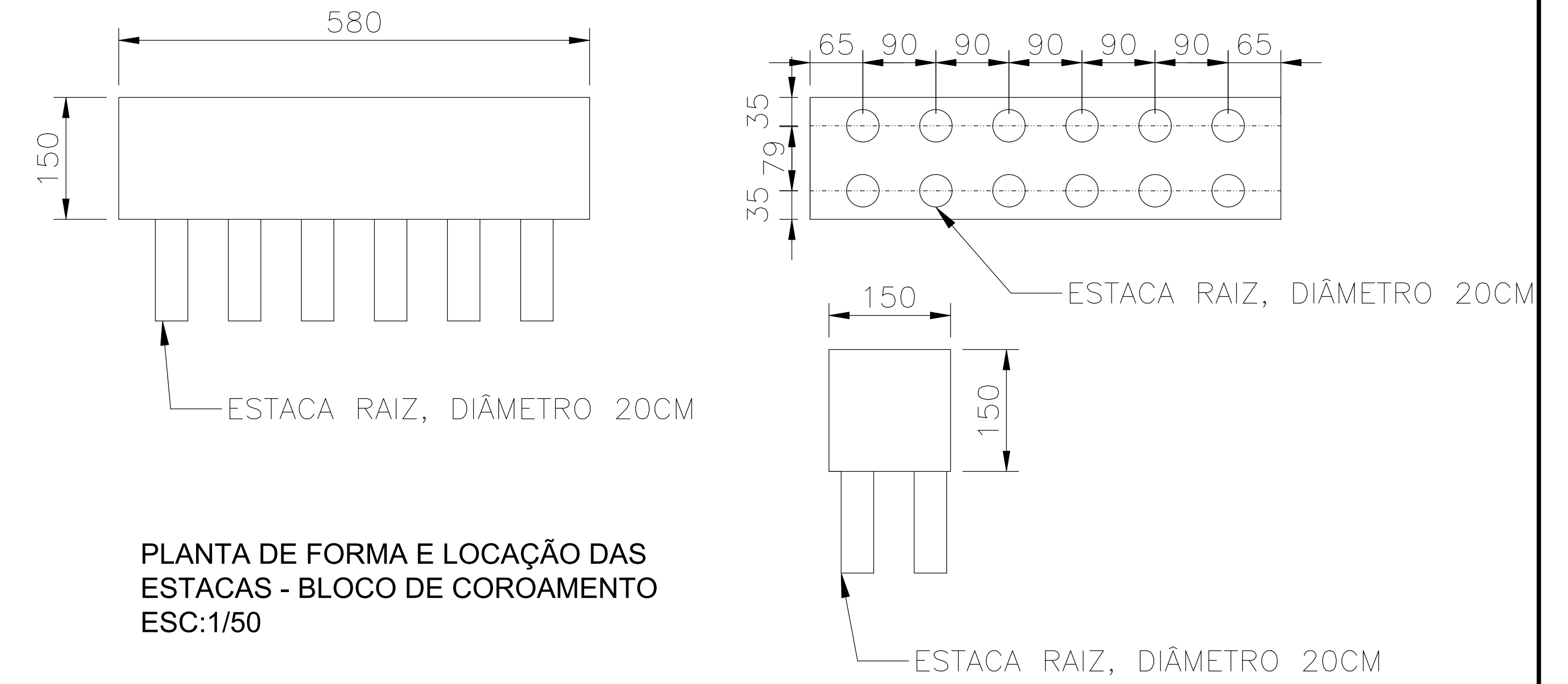


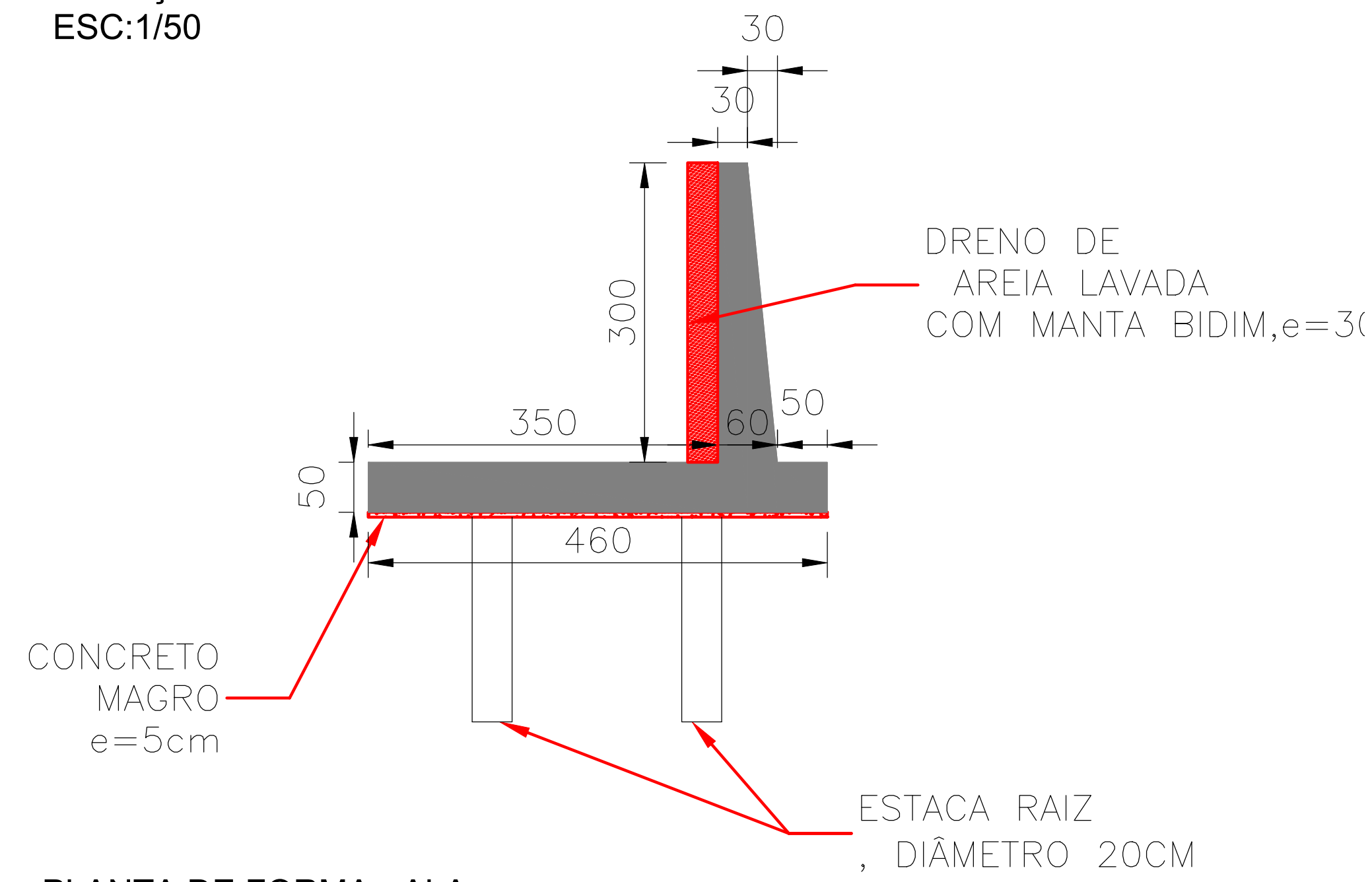
LOCAÇÃO DAS ESTACAS - ALA  
ESC:1/50



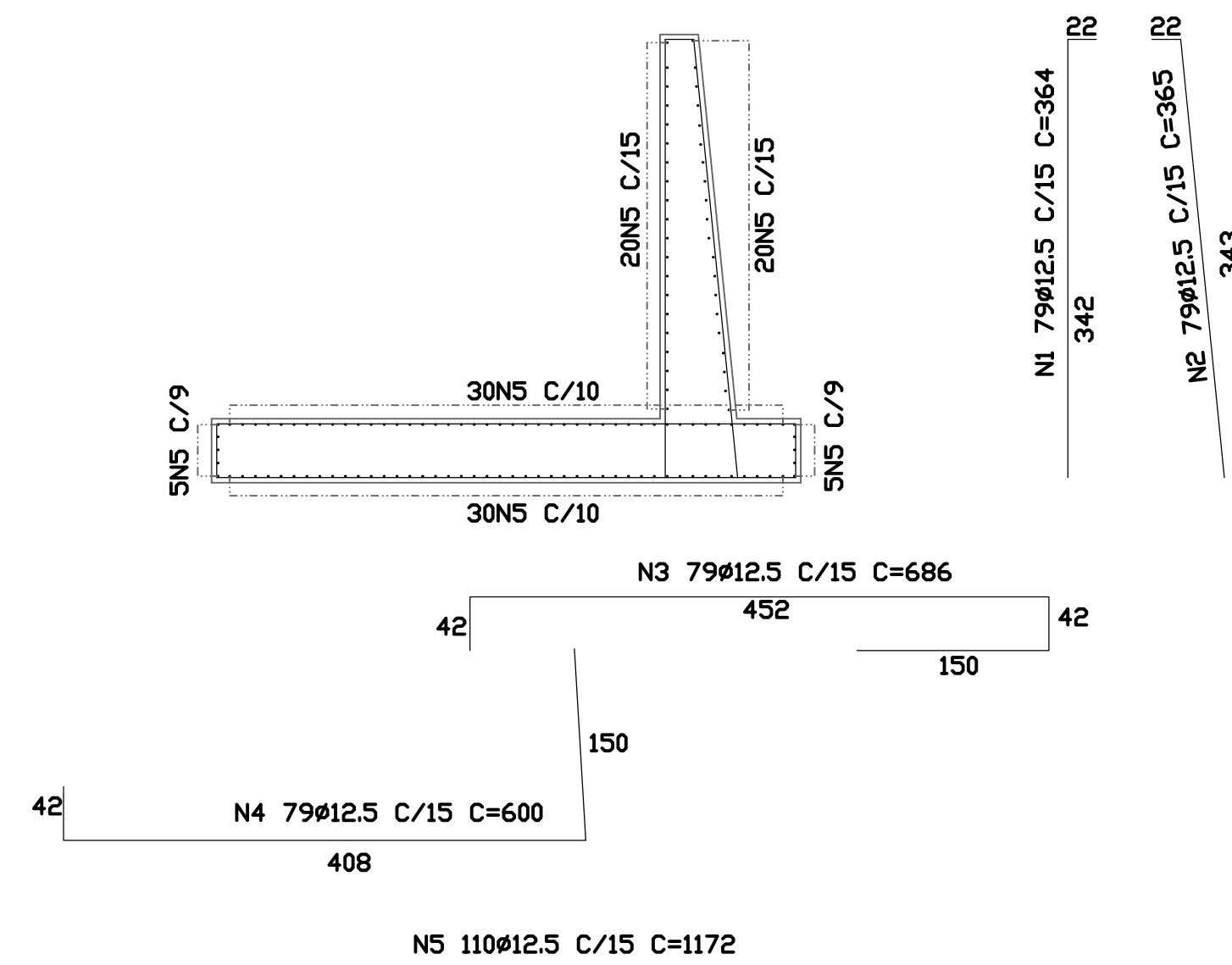
POSIÇÃO DOS BARBACÁS - ALA  
ESC:1/50



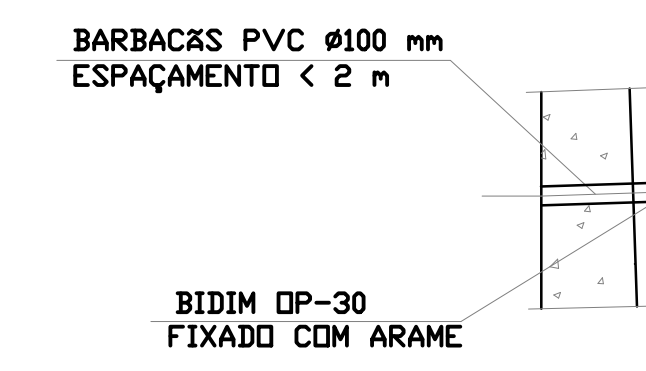
PLANTA DE FORMA E LOCAÇÃO DAS ESTACAS - BLOCO DE COROAMENTO  
ESC:1/50



PLANTA DE FORMA - ALA  
ESC:1/50



PLANTA DE FERRAGENS - ALA  
ESC:1/50



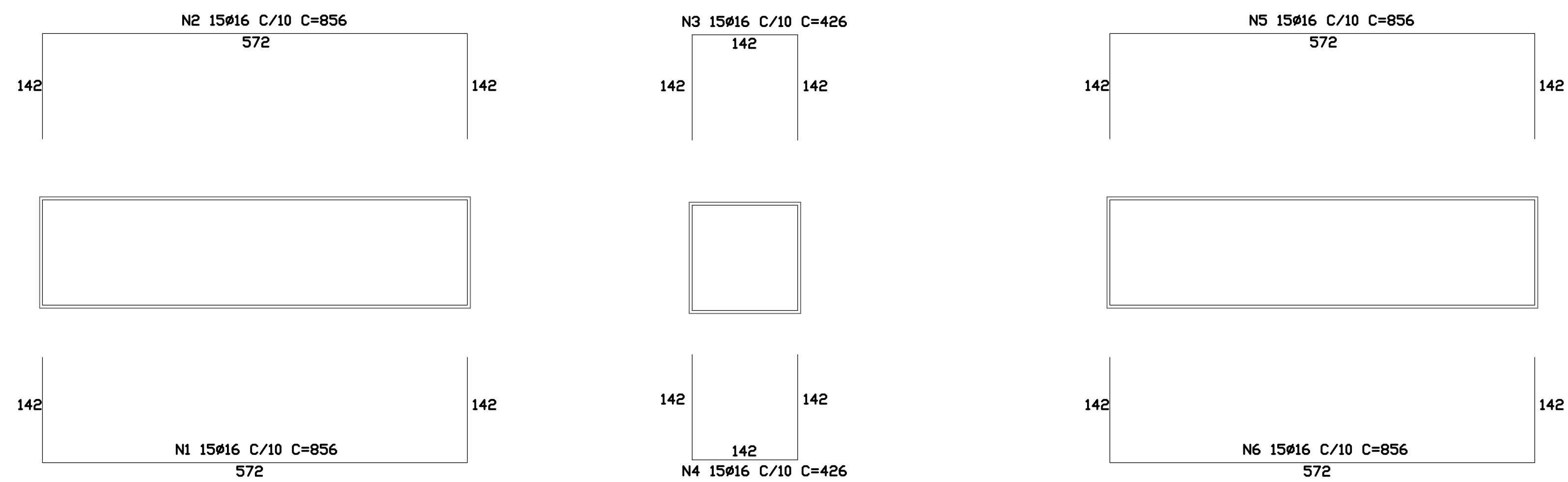
DETALHE DOS BARBACÁS  
ESC:1/50

ALA 1					
N	$\phi$ (mm)	QUANT.	COMP. UNIT. (cm)	COMP. TOTAL (cm)	COMP. TOTAL (m)
1	12.5	79	364	28756	287.56
2	12.5	79	365	28835	288.35
3	12.5	79	686	54194	541.94
4	12.5	79	680	47400	474
5	12.5	110	1172	128920	1289.2
$\phi$ (mm)		COMP. TOTAL (m)	MASSA (kg)		
12.5		2881,05	2774,45		

Concreto: 43,07 m<sup>3</sup>  
 Forma: 82,6 m<sup>2</sup>  
 Dreno de areia: 10,62 m<sup>2</sup>  
 Manta Bidim: 35,64 m<sup>2</sup>  
 Concreto Magro: 2,71 m<sup>3</sup>  
 Dreno PVC 100: 22 un

ALA 2					
N	$\phi$ (mm)	QUANT.	COMP. UNIT. (cm)	COMP. TOTAL (cm)	COMP. TOTAL (m)
1	12.5	79	364	28756	287.56
2	12.5	79	365	28835	288.35
3	12.5	79	686	54194	541.94
4	12.5	79	680	47400	474
5	12.5	110	1172	128920	1289.2
$\phi$ (mm)		COMP. TOTAL (m)	MASSA (kg)		
12.5		2881,05	2774,45		

Concreto: 43,07 m<sup>3</sup>  
 Forma: 82,6 m<sup>2</sup>  
 Dreno de areia: 10,62 m<sup>2</sup>  
 Manta Bidim: 35,64 m<sup>2</sup>  
 Concreto Magro: 2,71 m<sup>3</sup>  
 Dreno PVC 100: 22 un



PLANTA DE FERRAGENS - BLOCO DE COROAMENTO  
ESC:1/50

BLOCO DE COROAMENTO 1					
N	$\phi$ (mm)	QUANT.	COMP. UNIT. (cm)	COMP. TOTAL (cm)	COMP. TOTAL (m)
1	16	15	856	12840	128.4
2	16	15	856	12840	128.4
3	16	57	426	24282	242.82
4	16	57	426	24282	242.82
5	16	15	856	12840	128.4
6	16	15	856	12840	128.4
$\phi$ (mm)		COMP. TOTAL (m)	MASSA (kg)		
16		999,24	1576,80		

Concreto: 13,05 m<sup>3</sup>  
 Forma: 21,9 m<sup>2</sup>  
 Concreto Magro: 0,44 m<sup>3</sup>

BLOCO DE COROAMENTO 2					
N	$\phi$ (mm)	QUANT.	COMP. UNIT. (cm)	COMP. TOTAL (cm)	COMP. TOTAL (m)
1	16	15	856	12840	128.4
2	16	15	856	12840	128.4
3	16	57	426	24282	242.82
4	16	57	426	24282	242.82
5	16	15	856	12840	128.4
6	16	15	856	12840	128.4
$\phi$ (mm)		COMP. TOTAL (m)	MASSA (kg)		
16		999,24	1576,80		

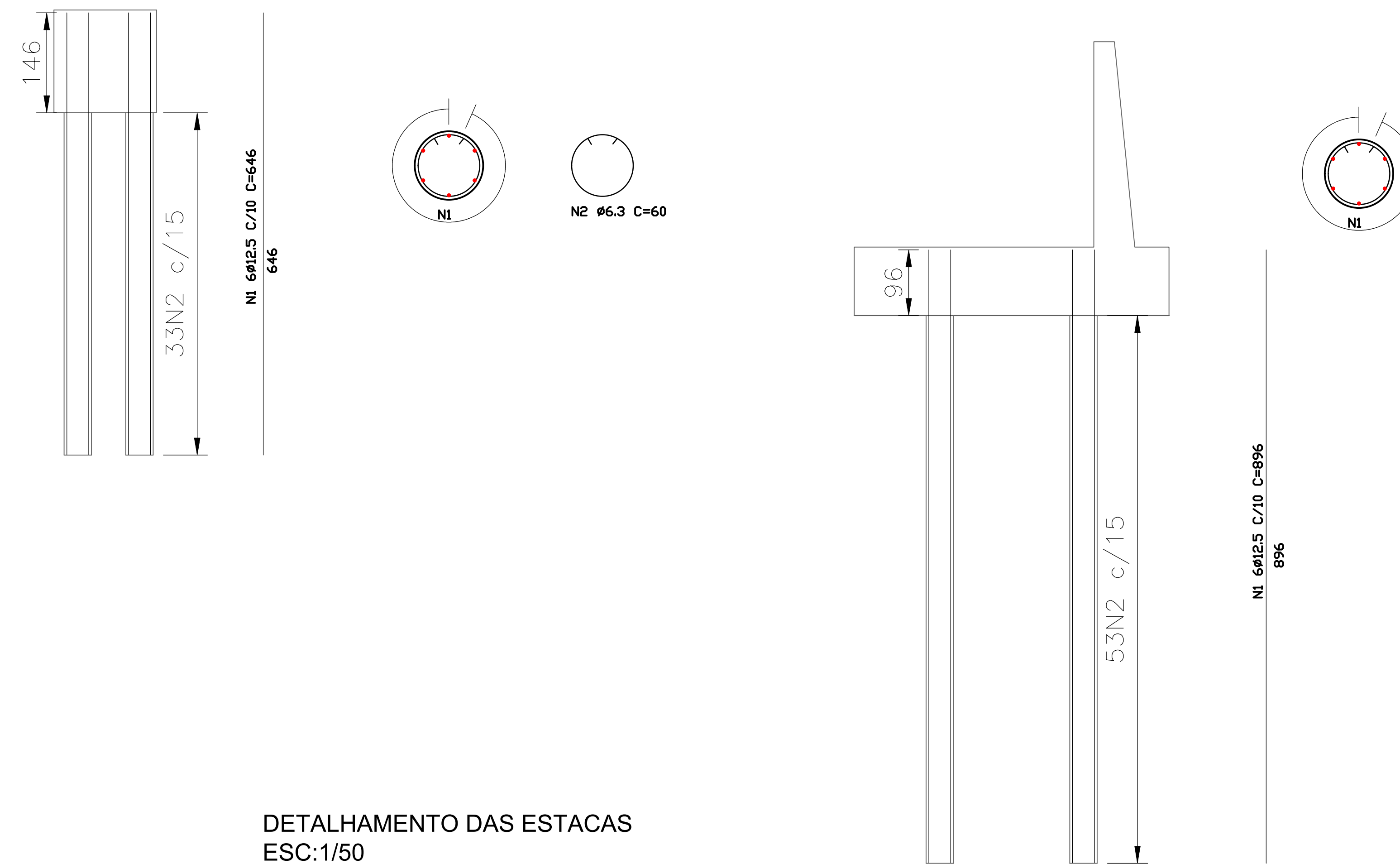
Concreto: 13,05 m<sup>3</sup>  
 Forma: 21,9 m<sup>2</sup>  
 Concreto Magro: 0,44 m<sup>3</sup>

ESTACA RAZ 5,0M - BLOCO DE COROAMENTO					
N	$\phi$ (mm)	QUANT.	COMP. UNIT. (cm)	COMP. TOTAL (cm)	COMP. TOTAL (m)
1	12.5	144	646	93024	930.24
2	6.3	792	60	47520	475.2
$\phi$ (mm)		COMP. TOTAL (m)	MASSA (kg)		
6.3		475,2	116,42		
12.5		930,24	895,82		

Comprimento total de estacas: 120 m

ESTACA RAZ 8,0M - ALAS					
N	$\phi$ (mm)	QUANT.	COMP. UNIT. (cm)	COMP. TOTAL (cm)	COMP. TOTAL (m)
1	12.5	168	896	150528	1505.28
2	6.3	924	60	55440	554.4
$\phi$ (mm)		COMP. TOTAL (m)	MASSA (kg)		
6.3		554,4	135,83		
12.5		1505,28	1449,58		

Comprimento total de estacas: 224 m



DETALHAMENTO DAS ESTACAS  
ESC:1/50

**PREFEITURA MUNICIPAL DE MURIAÉ**  
SECRETARIA MUNICIPAL DE OBRAS E URBANISMO

RECONSTRUÇÃO DA PONTE DO BARATA

LOCAL: MURIAÉ - MG	DATA: ABRIL/2021	ESPECIE: DETALHES CONSTRUTIVOS
PROJETO MISTO		
RESPONSÁVEL TÉCNICO: CARLOS GERALDO RODRIGUES KNEIP	PROJETO MISTO: JOSÉ BRAZ	
PROJETO CAD: DWG	PROJETO AD: AD	PROJETO PAV: PAV
Escala: 1/50		TABULEIRO PRE MOLDADO
PLANTA SEM CORTES DETACHES E LÍNEA DE FERRAGEM		