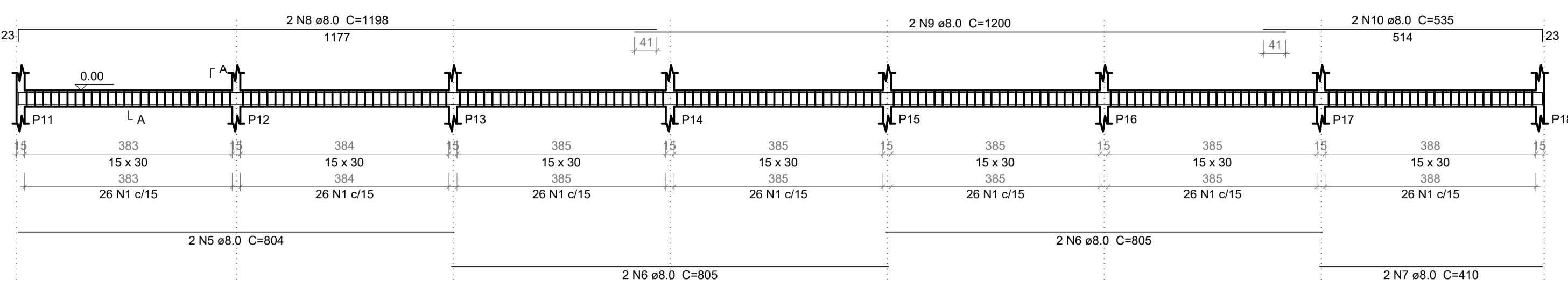
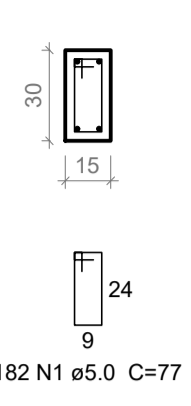


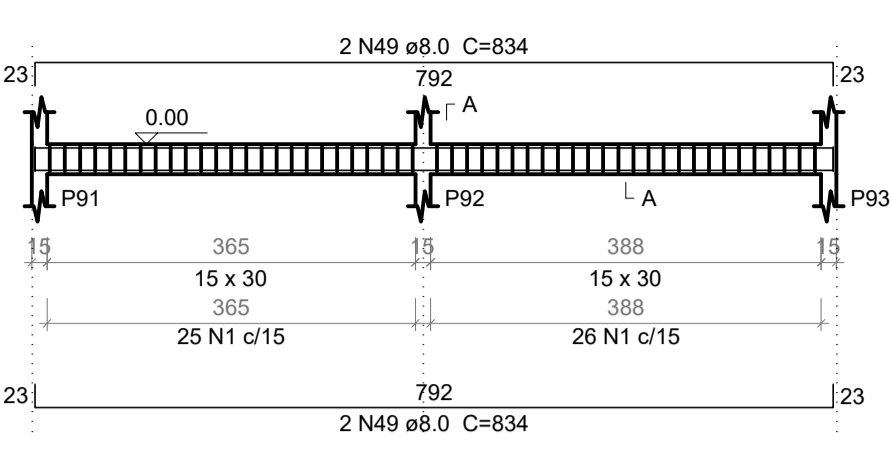
V1=V23 (15 x 30)  
ESC 1:75



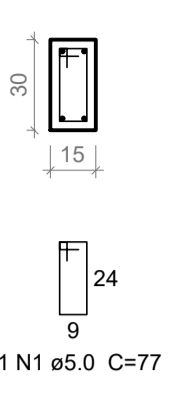
SEÇÃO A-A  
ESC 1:25



V2=V24 (15 x 30)  
ESC 1:75



SEÇÃO A-A  
ESC 1:25

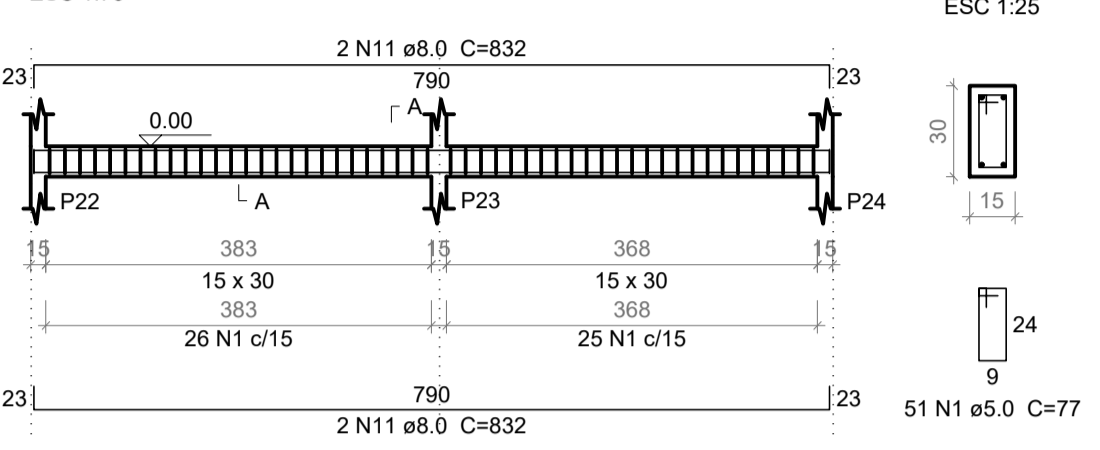


Resumo do aço

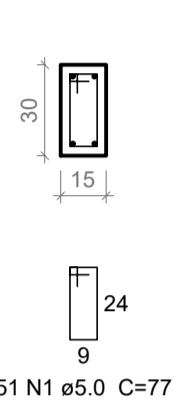
AÇO	DIAM (mm)	C.TOTAL (m)	QUANT + 10 % (Barras)	PESO + 10 % (kg)
CA50	6.3	20.6	2	5.5
	8.0	2121.2	195	920.7
	10.0	480.4	45	332.5
CA60	5.0	2746.2	252	465.6
<b>PESO TOTAL (kg)</b>				
CA50		1258.7		
CA60		465.6		

Volume de concreto (C-25) = 25.73 m³  
Área de forma = 421.96 m²

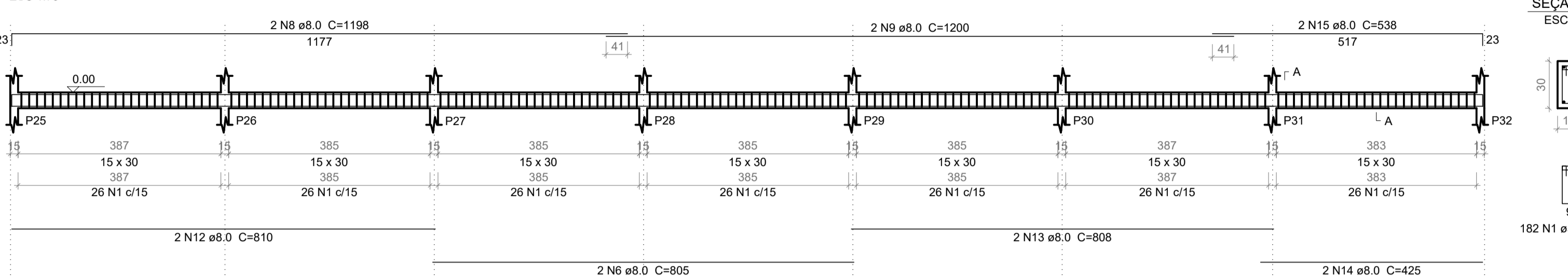
V3=V25 (15 x 30)  
ESC 1:75



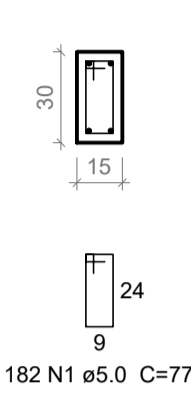
SEÇÃO A-A  
ESC 1:25



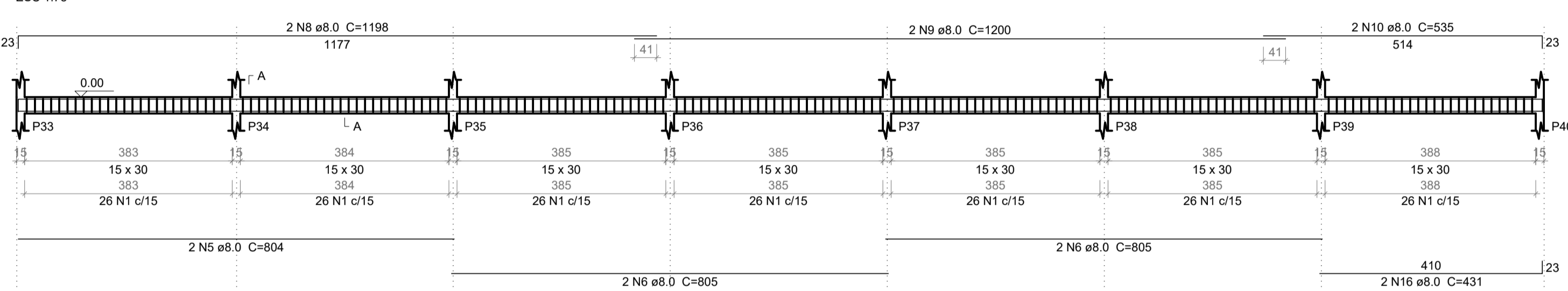
V4=V26 (15 x 30)  
ESC 1:75



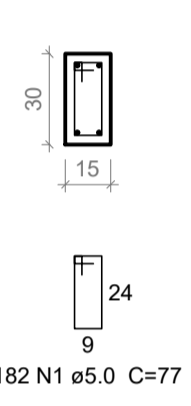
SEÇÃO A-A  
ESC 1:25



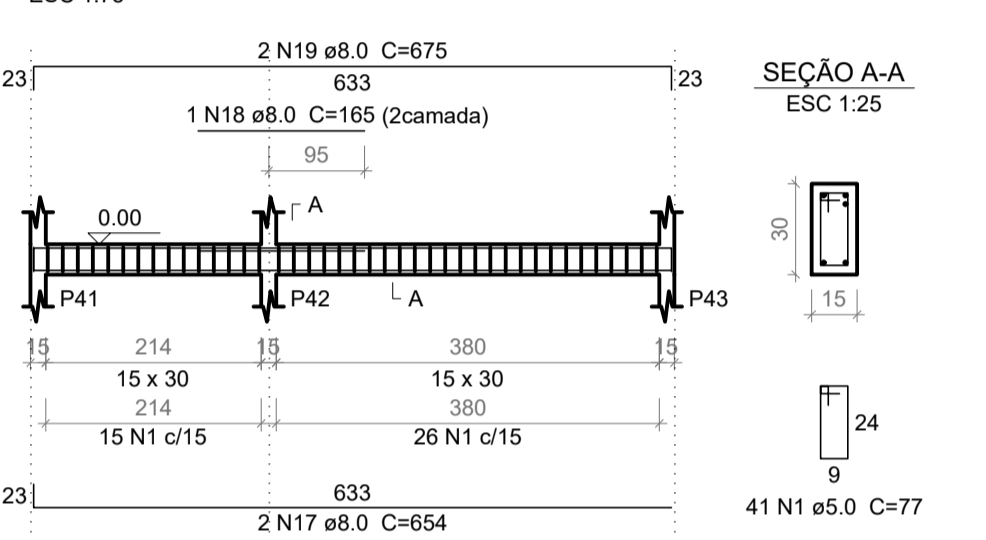
V5 (15 x 30)  
ESC 1:75



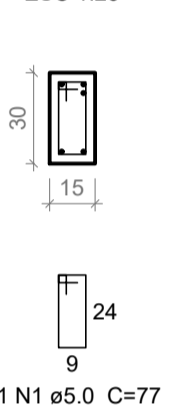
SEÇÃO A-A  
ESC 1:25



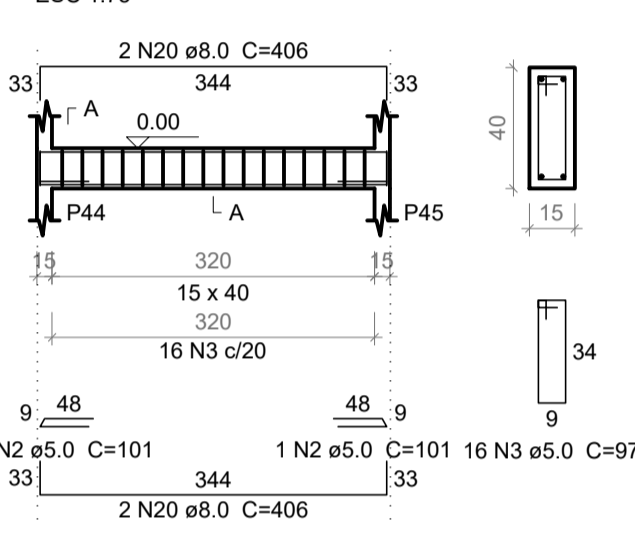
V6 (15 x 30)  
ESC 1:75



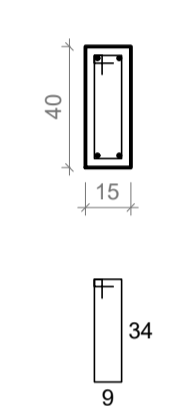
SEÇÃO A-A  
ESC 1:25



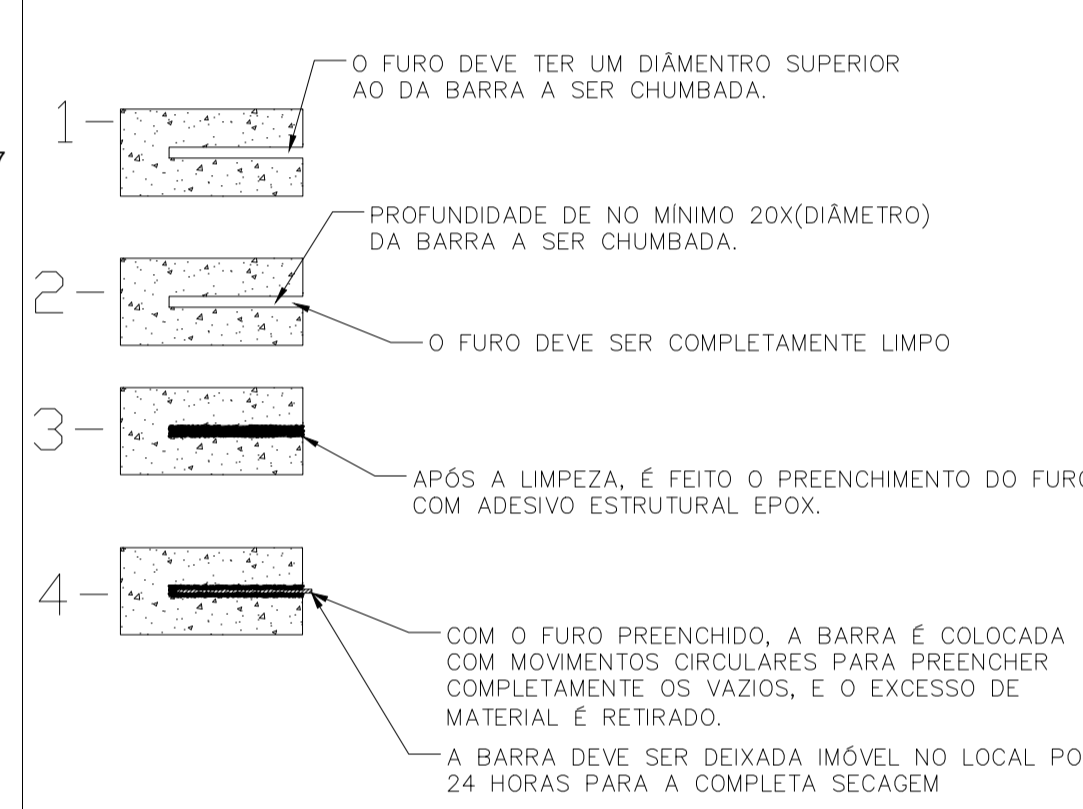
V7 (15 x 40)  
ESC 1:75



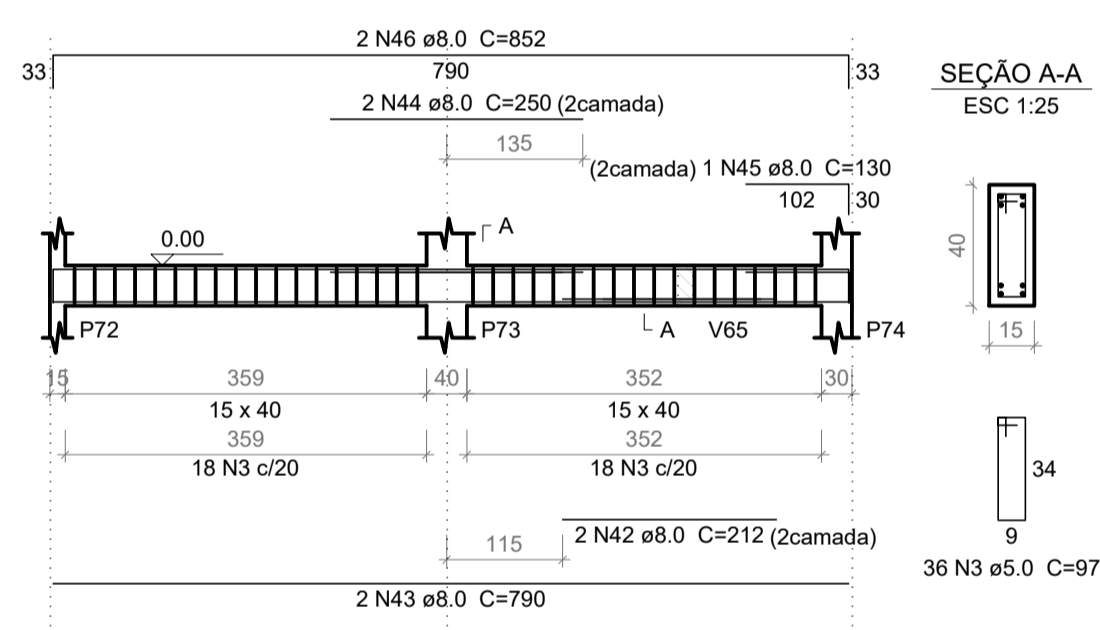
SEÇÃO A-A  
ESC 1:25



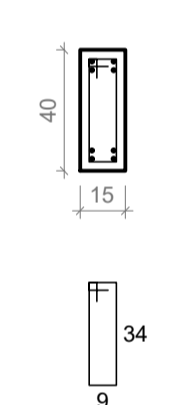
PROCEDIMENTO PARA FIXAÇÃO DA ESTRUTURA NOVA NA EXISTENTE



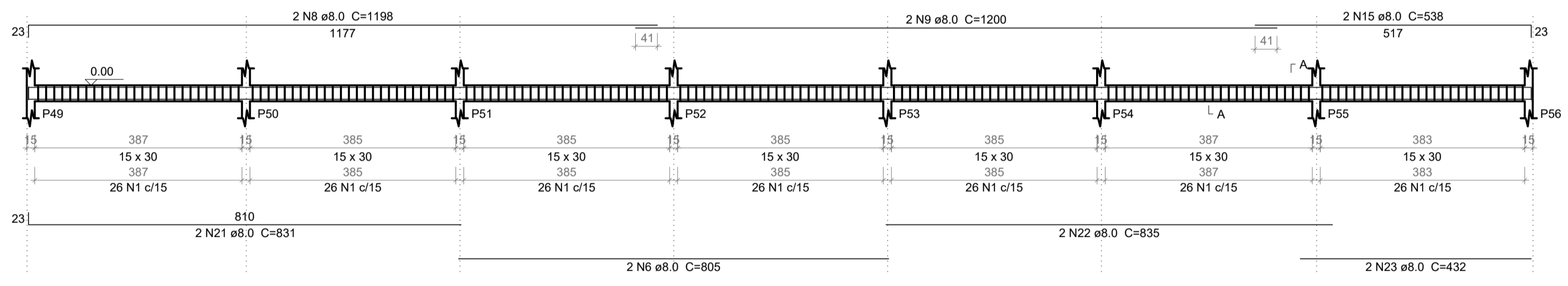
V8=V21 (15 x 40)  
ESC 1:75



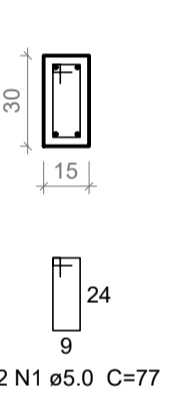
SEÇÃO A-A  
ESC 1:25



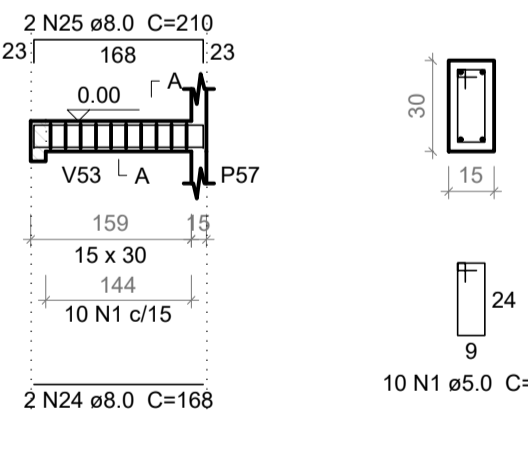
V9 (15 x 30)  
ESC 1:75



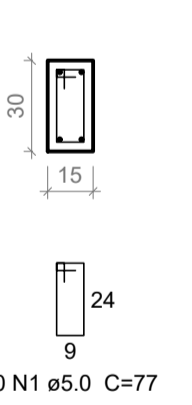
SEÇÃO A-A  
ESC 1:25



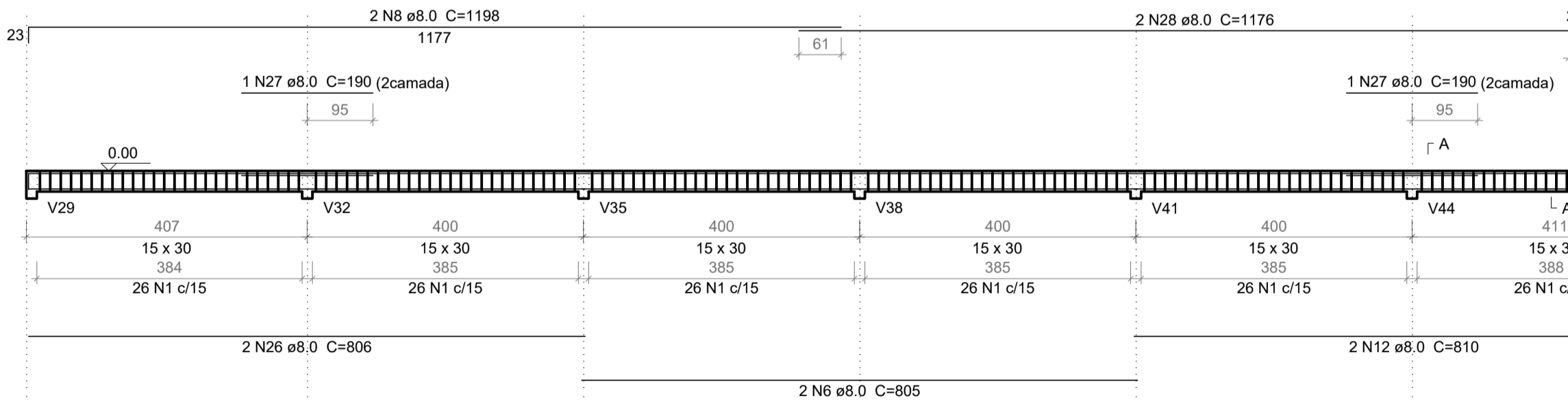
V10 (15 x 30)  
ESC 1:75



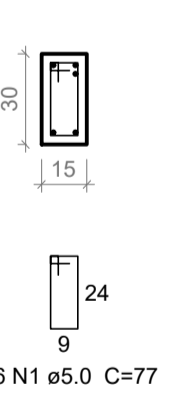
SEÇÃO A-A  
ESC 1:25



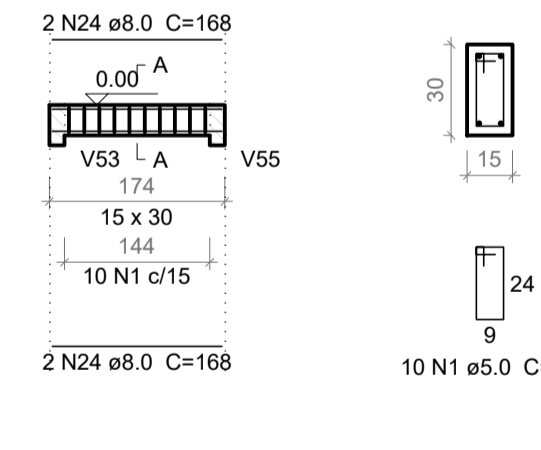
V11 (15 x 30)  
ESC 1:75



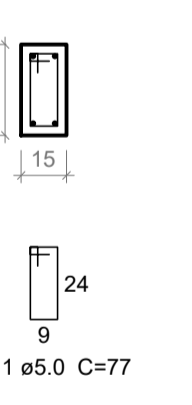
SEÇÃO A-A  
ESC 1:25



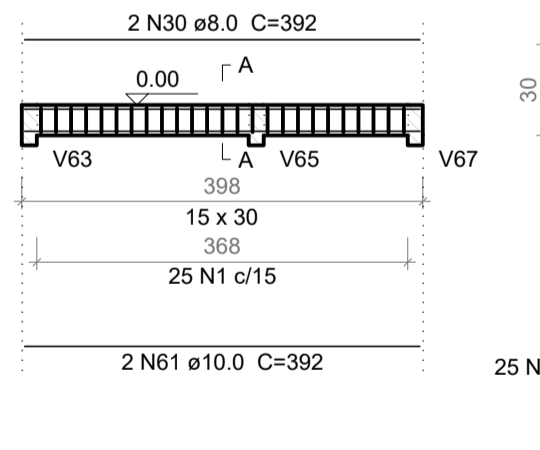
V12 (15 x 30)  
ESC 1:75



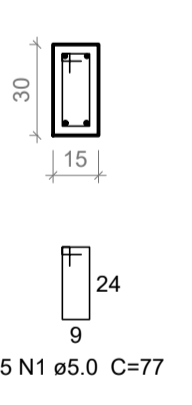
SEÇÃO A-A  
ESC 1:25



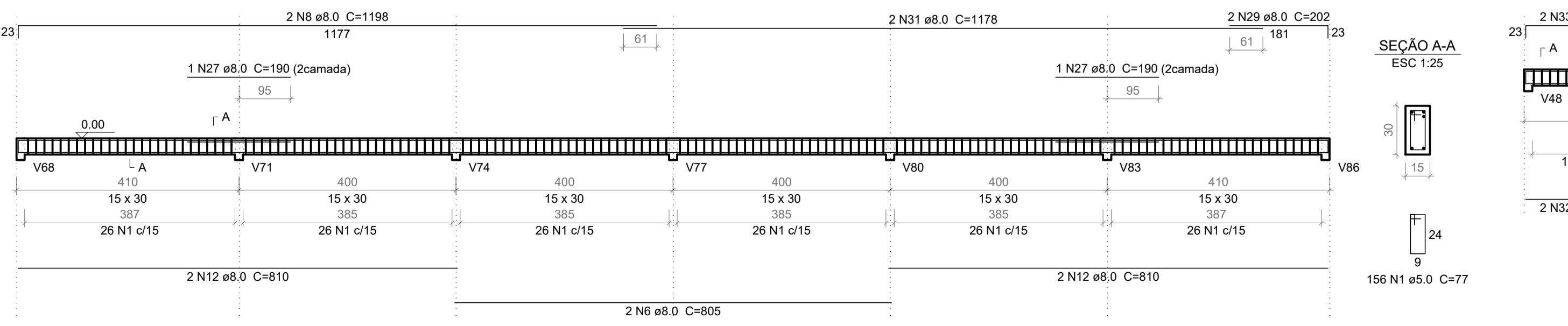
V13 (15 x 30)  
ESC 1:75



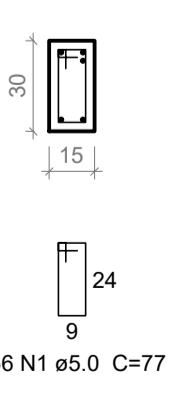
SEÇÃO A-A  
ESC 1:25



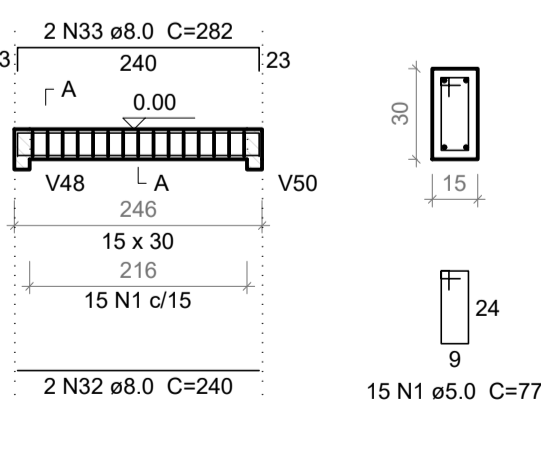
V14 (15 x 30)  
ESC 1:75



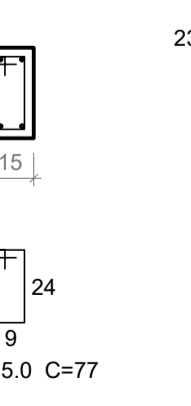
SEÇÃO A-A  
ESC 1:25



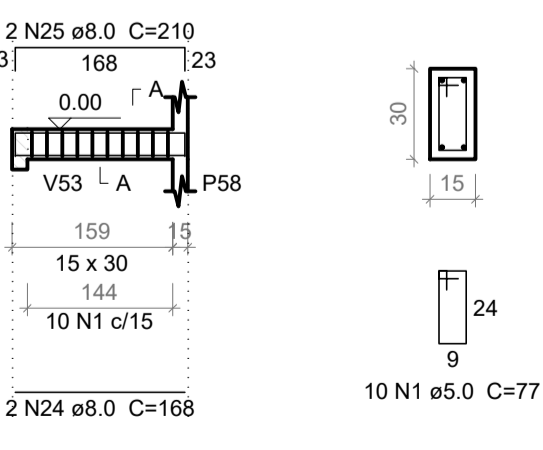
V15 (15 x 30)  
ESC 1:75



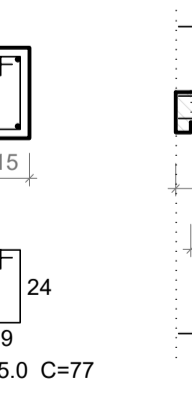
SEÇÃO A-A  
ESC 1:25



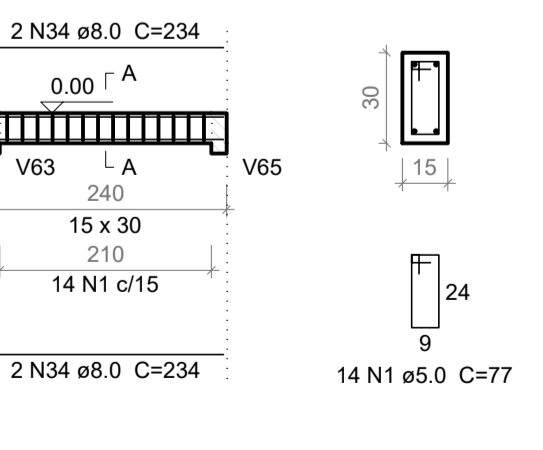
V16 (15 x 30)  
ESC 1:75



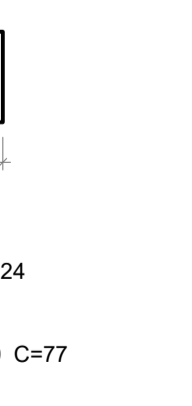
SEÇÃO A-A  
ESC 1:25



V17 (15 x 30)  
ESC 1:75



SEÇÃO A-A  
ESC 1:25

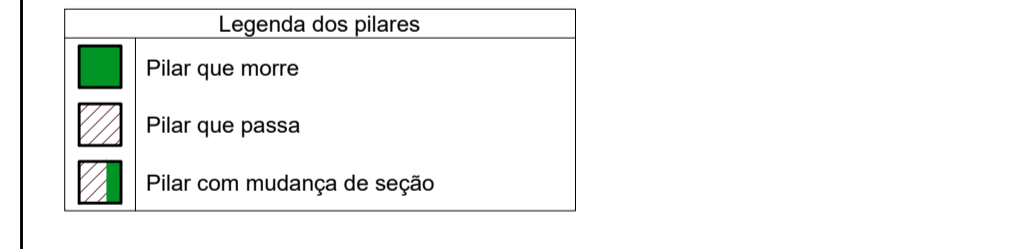


NOTAS:

- (A) PE - PILARES PRÉ MOLDADOS EXISTENTES
- (B) AS VIGAS QUE SE ANCIAM NOS PE DEVEM SER ANCORADAS COM SHAKOUR
- (C) PILARES SEM SAPATAS DEVEM SER ANCORADOS NO RABELO EXISTENTE COM SHAKOUR
- (D) RABELO DO PLATAFORMA = 10 CM
- (E) VERIFICAR MEDIDAS DO PLATAFORMA COM O FABRICANTES ANTES DA EXECUÇÃO DA CAIXA

Elemento	fck (MPa)
Vigas e lajes	25
Pilares	25
Sapatas	25

LEGENDA:



REV.	T.E.	DESCRIÇÃO	PROJ.	PROJ.	VER.	APR.	AUT.	DATA
REVISÕES								

T.E. TIPO DE EMISSÃO	(A) PRELIMINAR (B) PARA APROVAÇÃO (C) PARA CONHECIMENTO (F) CONFORME COMPRADO	(D) PARA COTAÇÃO (E) PARA CONSTRUÇÃO (H) CANCELADO	(G) CONFORME CONSTRUÍDO
ASSINATURA	ASSINATURA		DATA
RT	NOME	CREA/MG:	SET/2022
PROJETISTA	HENRIQUE VITAL DO CARMO FREITAS	188562	
SUPERVISOR	FABIOLA BATISTA PIRES	78.851/D	SET/2022

**CONEP CONSULTORIA** PREFEITURA MUNICIPAL DE MURIAÉ SECRETARIA DE OBRAS

**PROJETO ESTRUTURAL**  
PROJETO EXECUTIVO  
REFORMA, ADQUAÇÃO E APLIAÇÃO DO MERCADO DO PRODUTOR MUNICIPAL  
RUA SINVAL FLORENCIO DA SILVA, BAIRRO CENTRO  
ARMAÇÃO DAS VIGAS DO TÉRREO (01-02)

REVISÃO: 00 Nº: OS-36/2022 ESCALA: INDICADA FOLHA 06 DE 13

# VIGAS DO TÉRREO