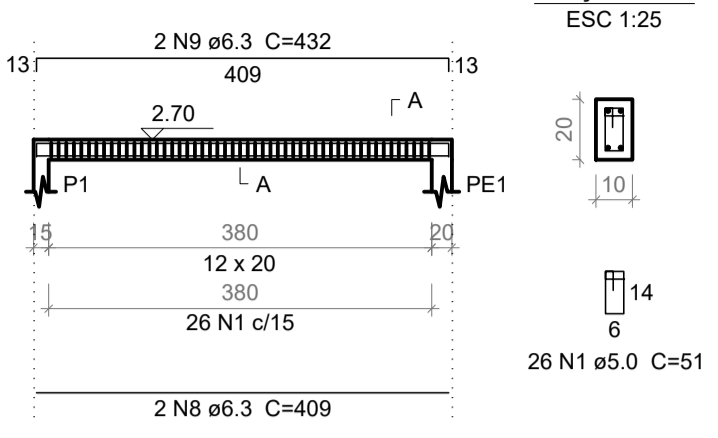
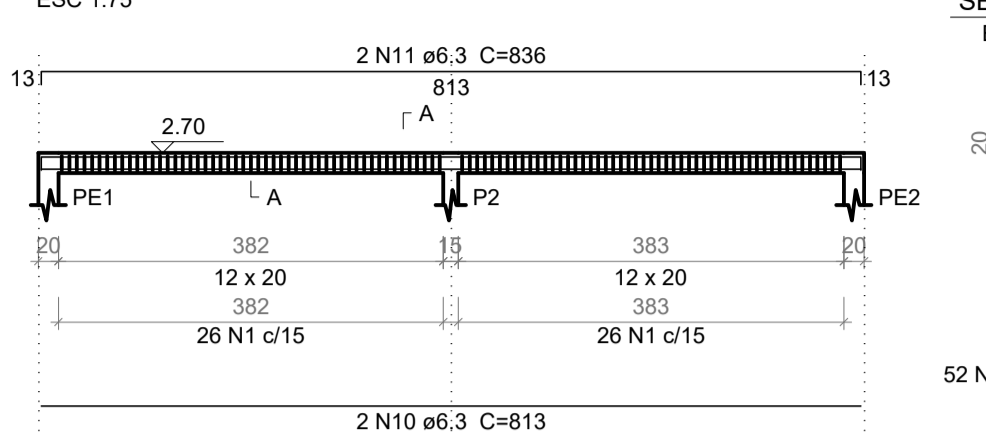


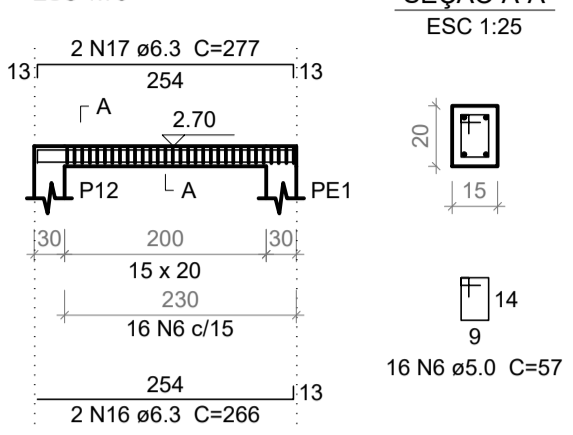
V1=V10=V26=V35(10 x 20)  
ESC 1:75



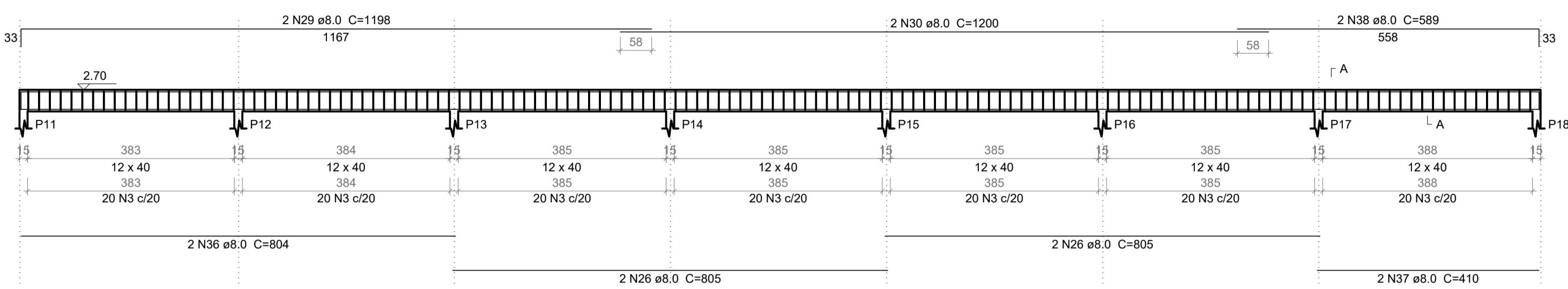
V2=V3=V4=V5=V6=V7=V8=V9=V27=  
V28=V29=V30=V31=V32=V33=V34  
(10 x 20)  
ESC 1:75



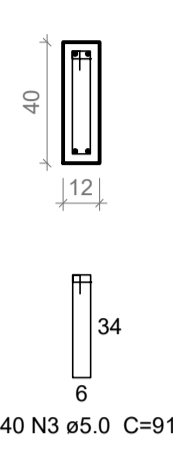
V37=V39=V41=V42=V44=V45=V47=V48=V50=V51=V53=V54=  
V56=V57=V60=V62=V63=V65=V67=V70=V72=V73=V75=V76=  
V79=V80=V82=V83=V85=V86=V88=V89=V91=V92=V94=V95=  
V97=V99=V101 (15 x 20)  
ESC 1:75



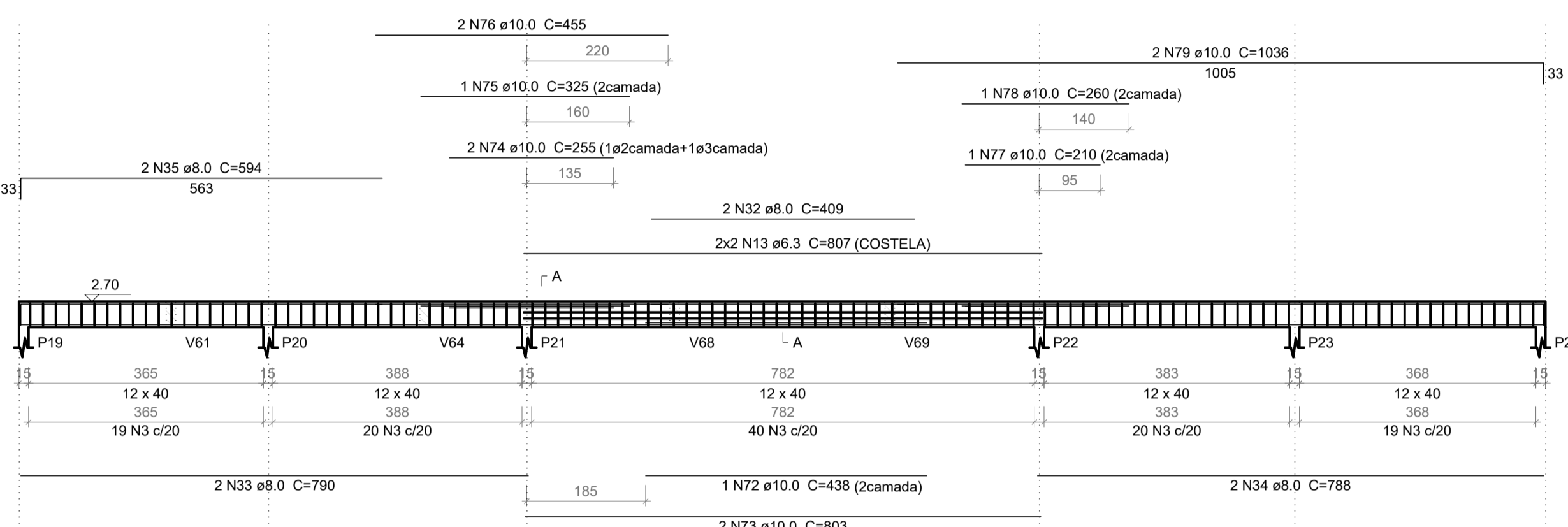
V11 (12 x 40)  
ESC 1:75



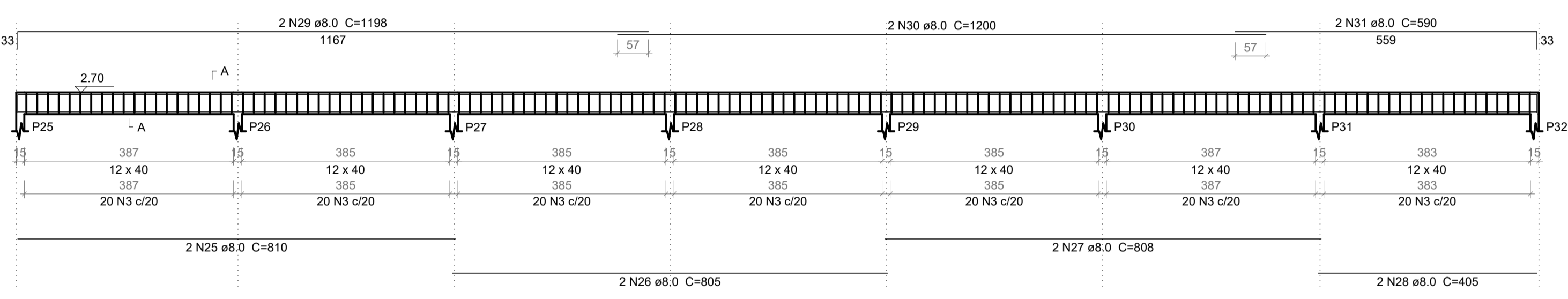
SEÇÃO A-A  
ESC 1:25



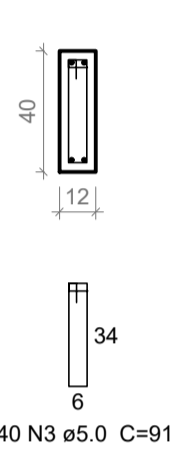
V12 (12 x 40)  
ESC 1:75



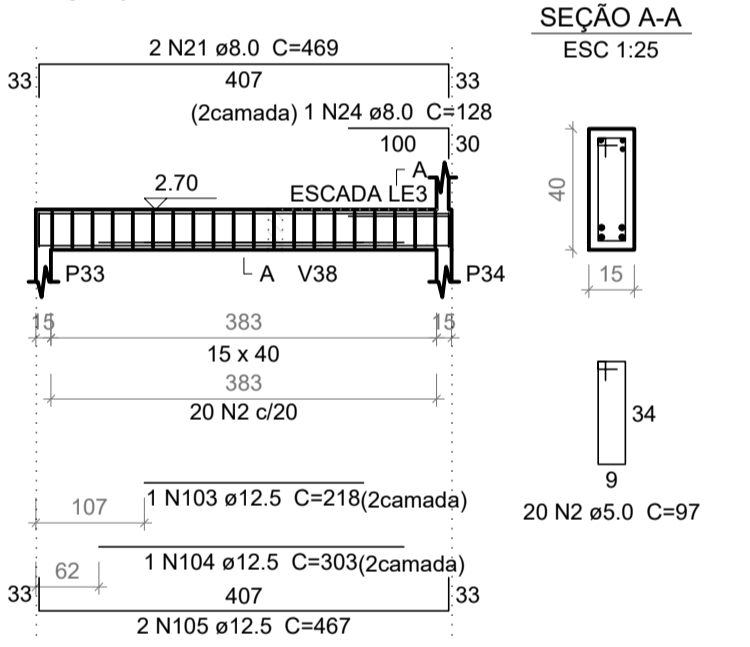
V13 (12 x 40)  
ESC 1:75



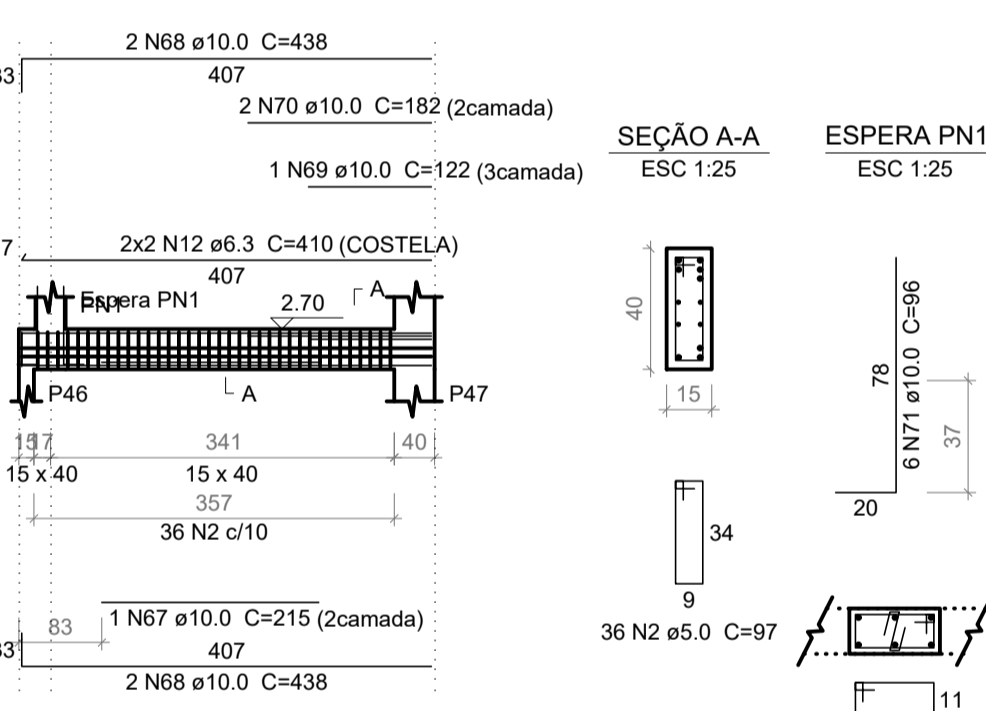
SEÇÃO A-A  
ESC 1:25



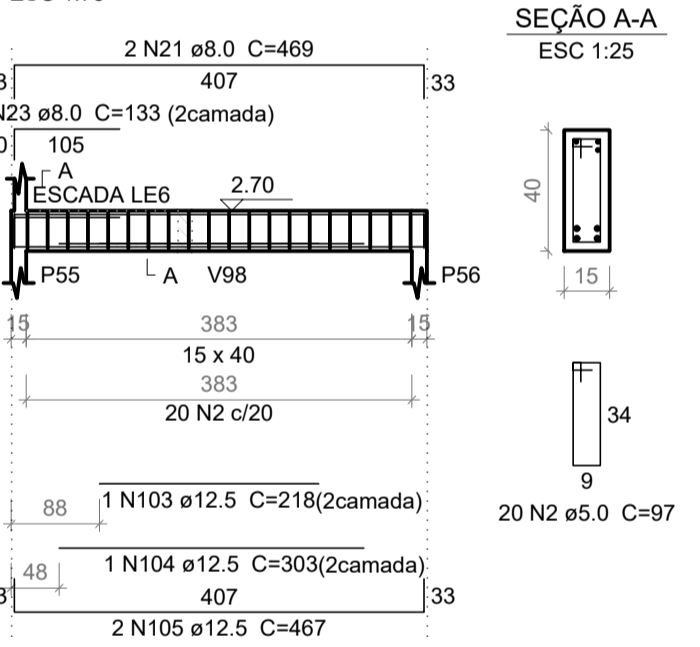
V14 (15 x 40)  
ESC 1:75



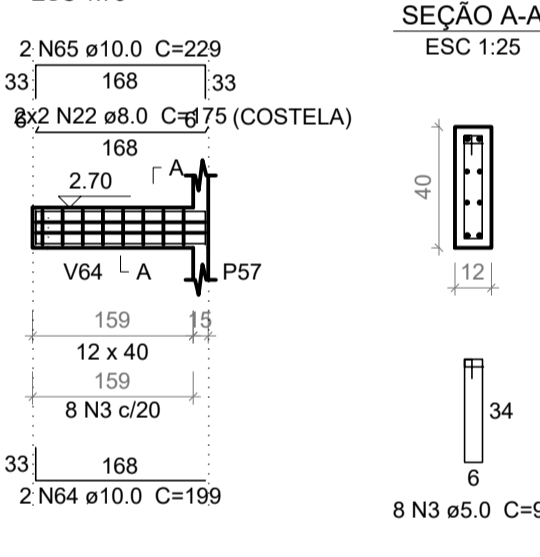
V15 (15 x 40)  
ESC 1:75



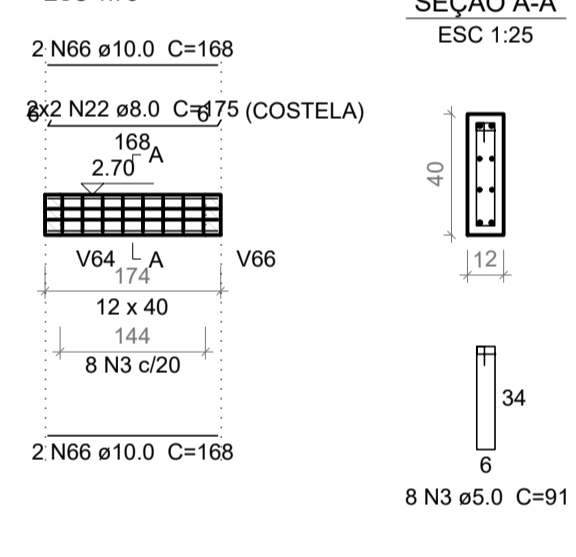
V16 (15 x 40)  
ESC 1:75



V17 (12 x 40)  
ESC 1:75



V18 (12 x 40)  
ESC 1:75



Resumo do aço

ACO	DIAM (mm)	C.TOTAL (m)	QUANT + 10% (Barras)	PESO + 10% (kg)
CA50	6.3	1224.7	113	329.6
	8.0	1073.1	99	465.8
	10.0	524	49	355.3
	12.5	715.1	66	757.8
	5.0	3201.1	294	542.7
PESO TOTAL (kg)				
CA50				1908.5
CA60				542.7

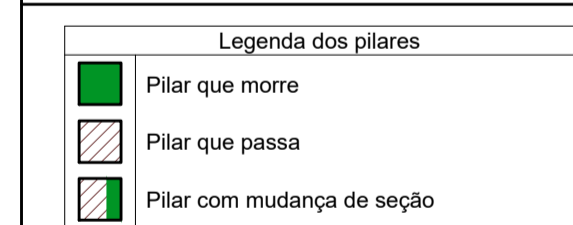
Volume de concreto (C-25) = 29.91 m³  
Área de forma = 453.37 m²

NOTAS:

- (A) PE - PILARES PRÉ MOLDADOS EXISTENTES
- (B) AS VIGAS QUE SE APOIAM NOS PE DEVEM SER ANCORADAS SEM SKADUR
- (C) PILARES SEM SAPATAS DEVEM SER ANCORADOS NO RADER EXISTENTE COM SKADUR
- (D) REBAIXO DO PLATAFORMA = 10 CM.
- (E) VERIFICAR MEDIDAS DO PLATAFORMA COM O FABRICANTES ANTES DA EXECUÇÃO DA CAIXA.

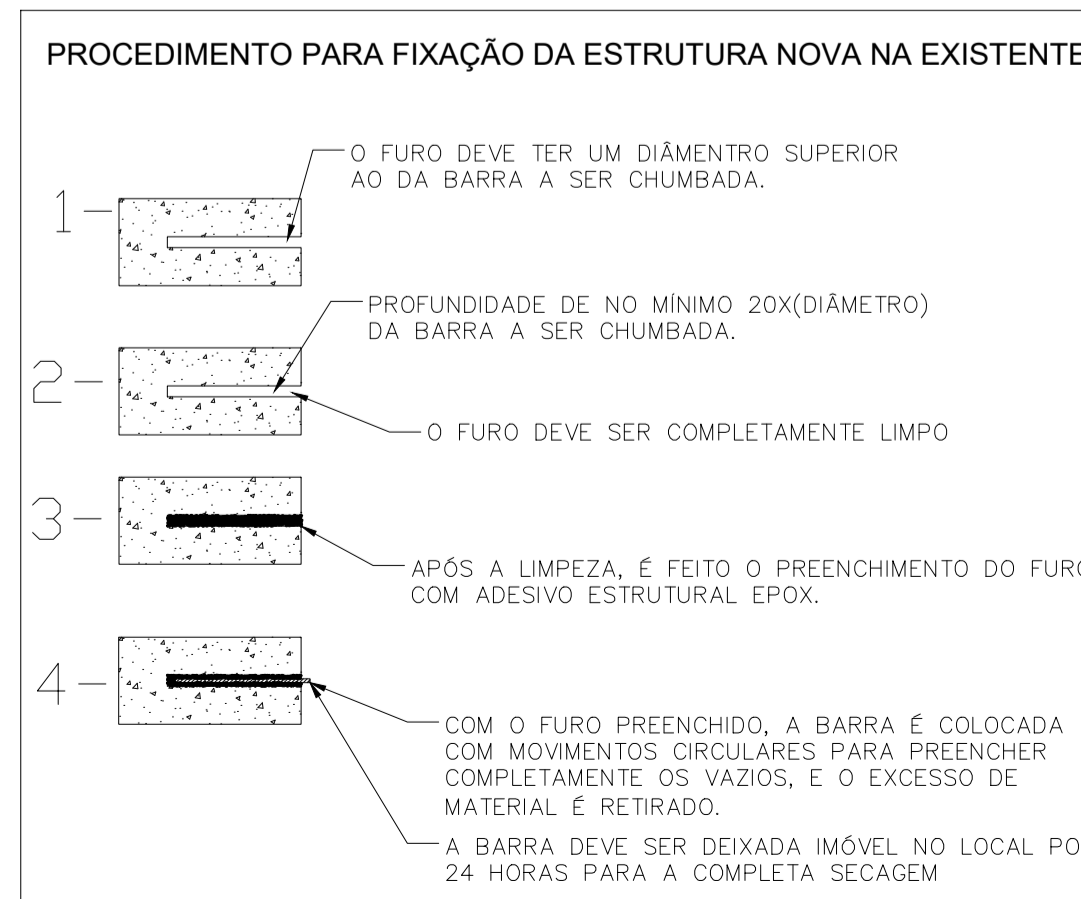
Elemento	fck (MPa)
Vigas e lajes	25
Pilares	25
Sapatas	25

LEGENDA:



REV.	T.E.	DESCRIÇÃO	PROJ.	PROJ.	VER.	APR.	AUT.	DATA
REVISÕES								

PROCEDIMENTO PARA FIXAÇÃO DA ESTRUTURA NOVA NA EXISTENTE



T.E.	TIPO DE EMISSÃO	ASSINATURA	DATA
RT	ASSINATURA		SET/2022
	NOME	HENRIQUE VITAL DO CARMO FREITAS	CREA/MG: 188562
	PROJETISTA		
	SUPERVISOR	FABIOLA BATISTA PIRES	CREA/MG: 78.851/D

**CONEP CONSULTORIA**  
PREFEITURA MUNICIPAL DE MURIAÉ  
SECRETARIA DE OBRAS

**PROJETO ESTRUTURAL**  
PROJETO EXECUTIVO  
REFORMA, ADQUAÇÃO E APLIAÇÃO DO MERCADO DO PRODUTOR MUNICIPAL  
RUA SINVAL FLORENCIO DA SILVA, BAIRRO CENTRO  
ARMAÇÃO DAS VIGAS DA 1ª LAJE (01-05)

REV: 00 Nº: OS-36/2022  
ESCALA INDICADA  
FOLHA 09 DE 13