

ARRANQUE DOS PILARES

P1=P2=P3=P4=P5=P6=P7=P8=P9=P10=
P105=P106=P107=P108=P109=P110=P111=P112=P113=P114

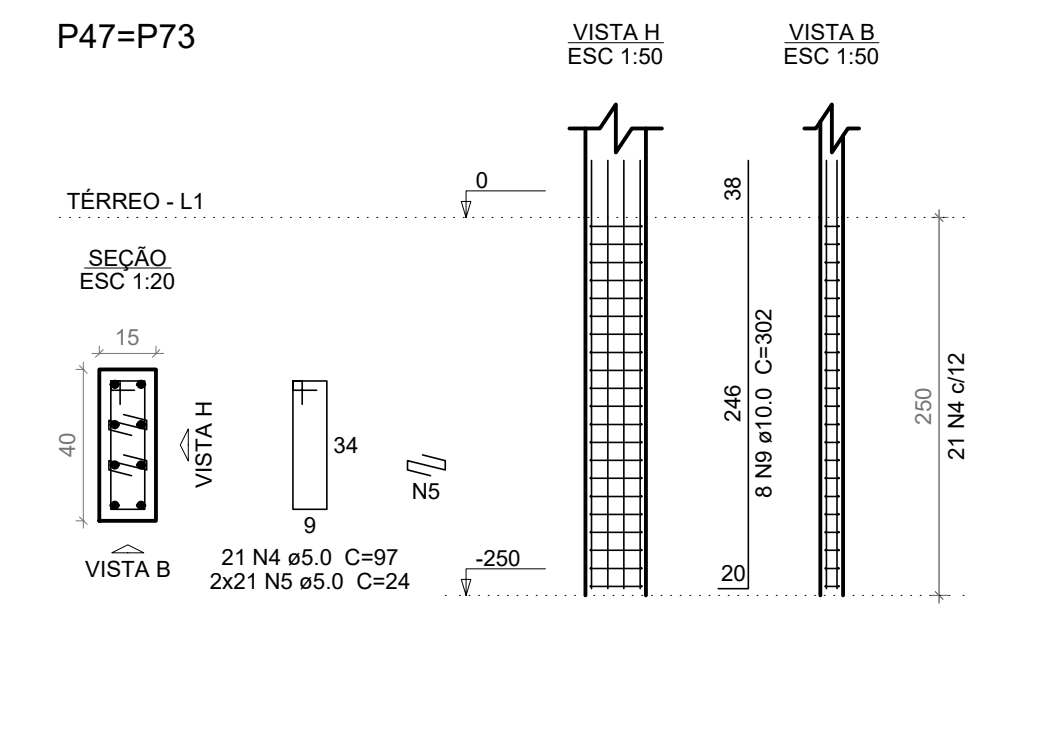
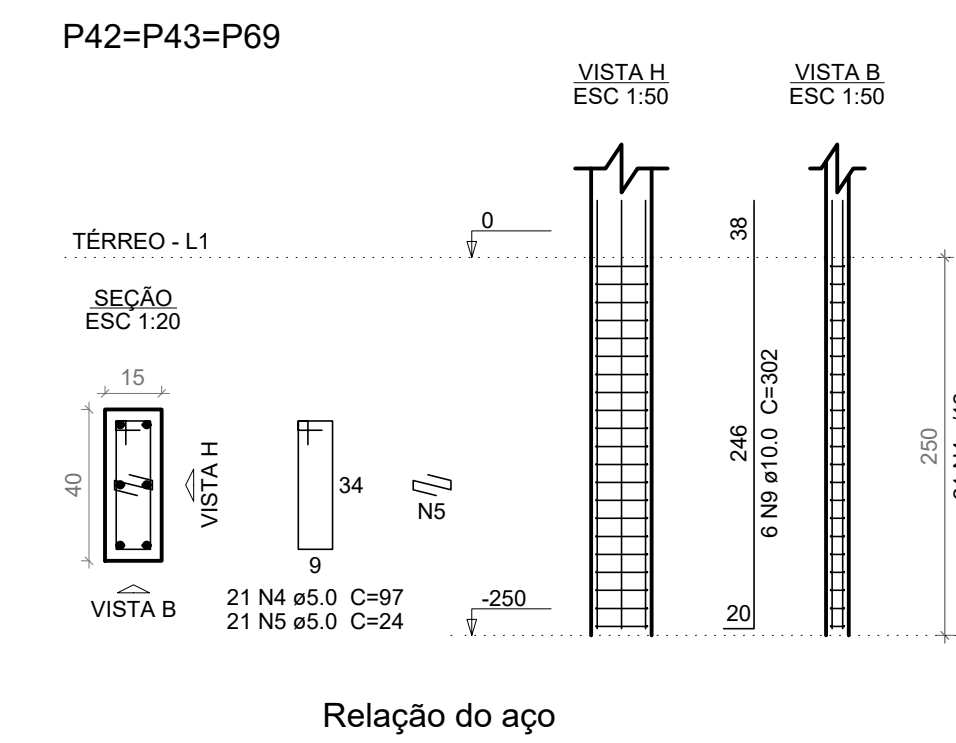
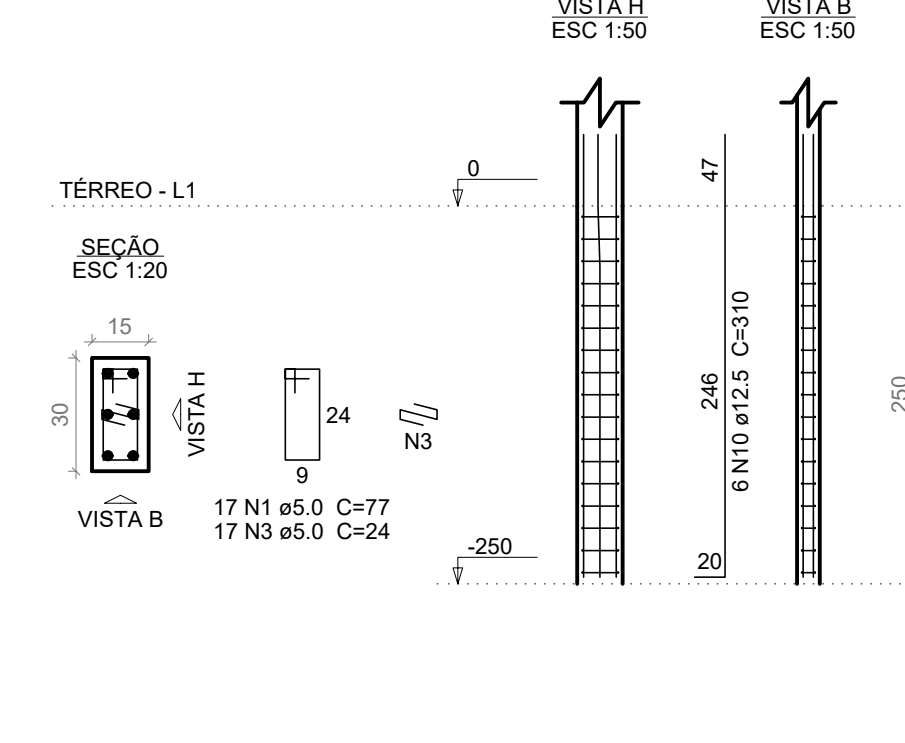
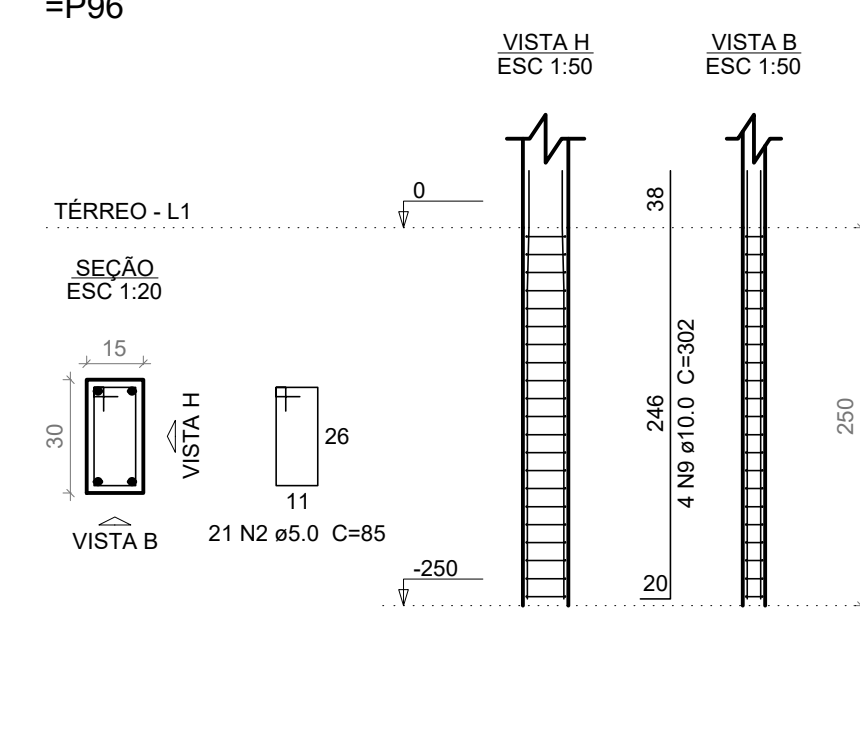
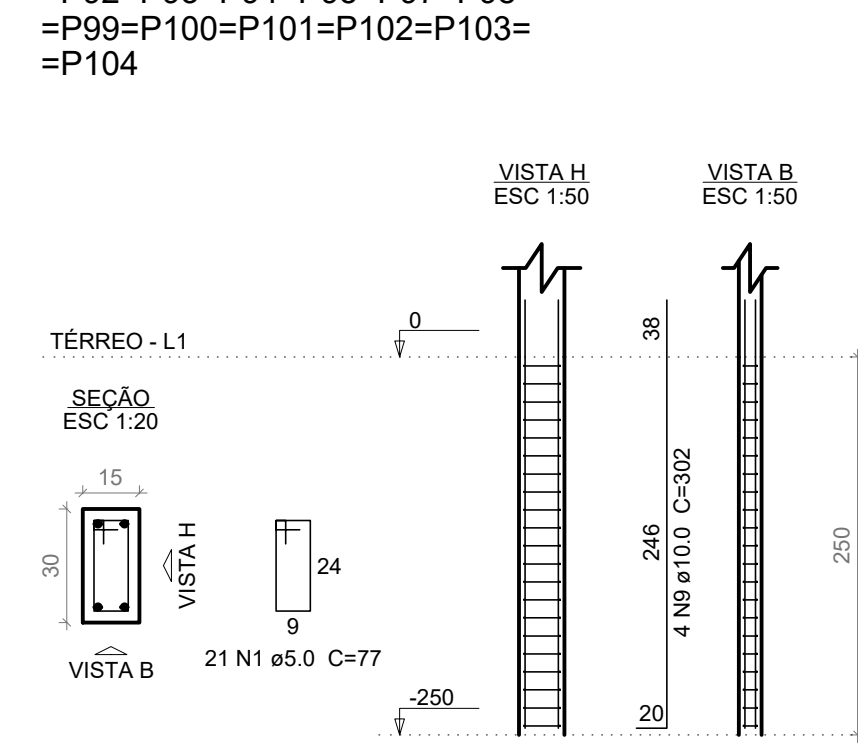
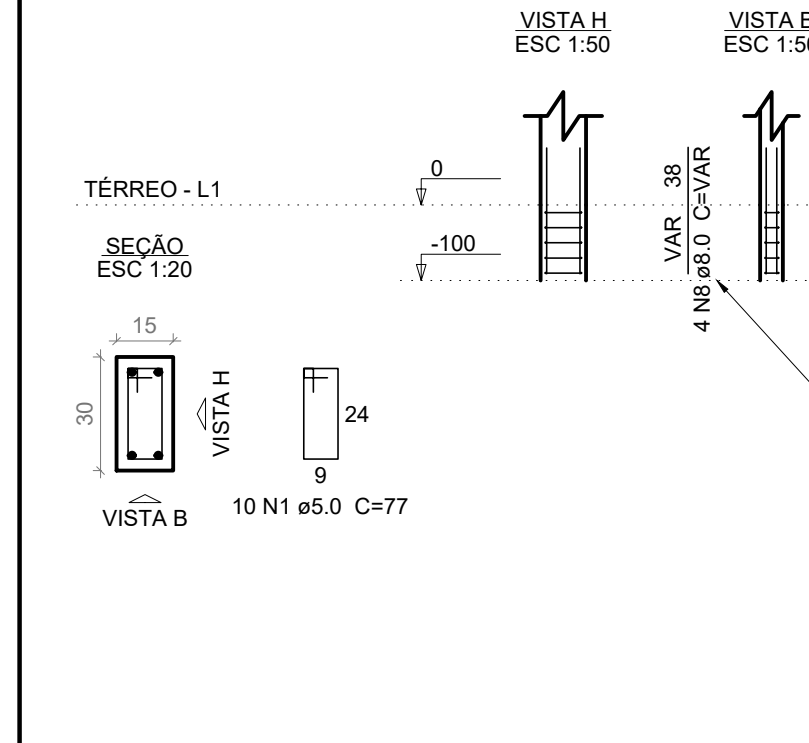
P11=P12=P13=P14=
P15=P16=P17=P18=P19=P20=
P21=P22=P23=P24=P25=P26=P27=
P28=P29=P30=P31=P32=P33=
P36=P37=P38=P39=P40=P46=
P49=P50=P51=P52=P53=P54=
P57=P58=P61=P62=P63=P64=
P65=P66=P72=P75=P76=P77=
P78=P79=P80=P83=P84=P85=
P86=P87=P88=P89=P90=P91=
P92=P93=P94=P95=P97=P98=
P99=P100=P101=P102=P103=
P104

P24=P41=P44=P45=P70=P71=
P96

P33=P34=P55=P56=P59=P82
P96

P42=P43=P69

P47=P73

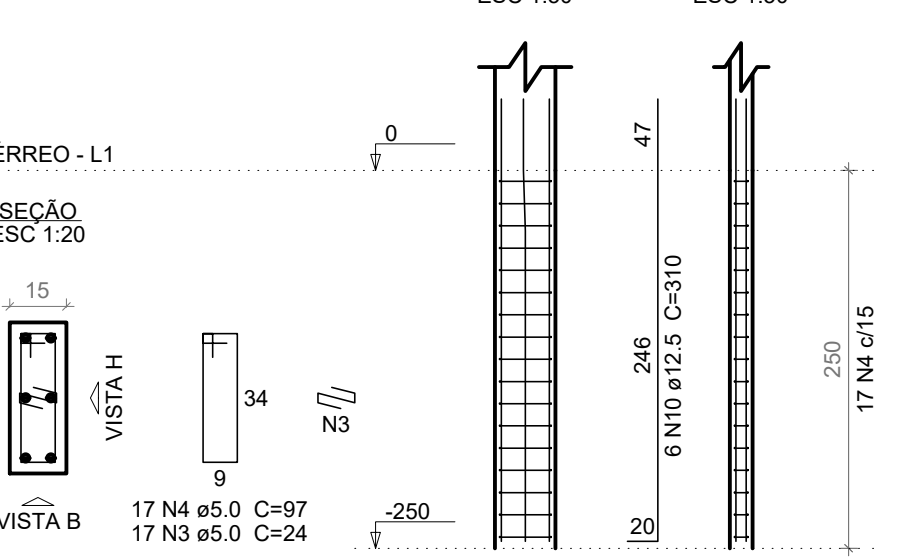
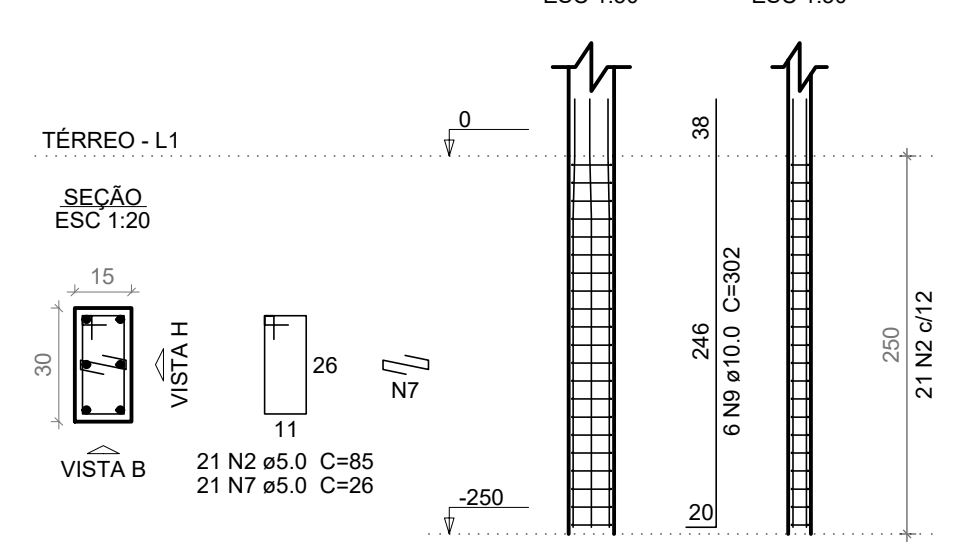
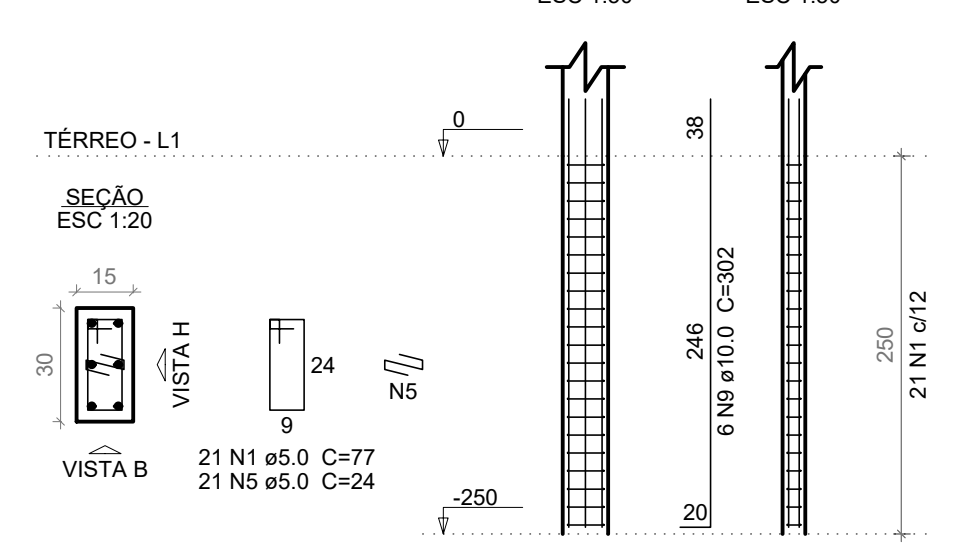
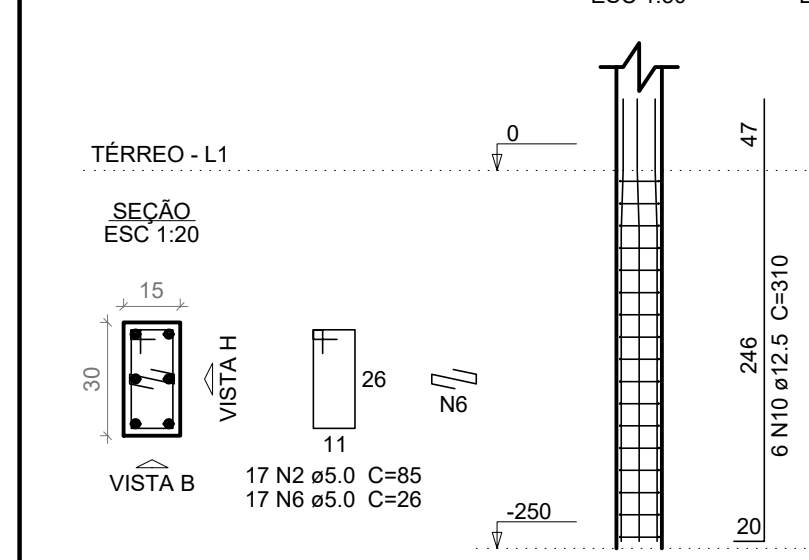


P48=P74

P60=P81

P67

P68



Relação do aço

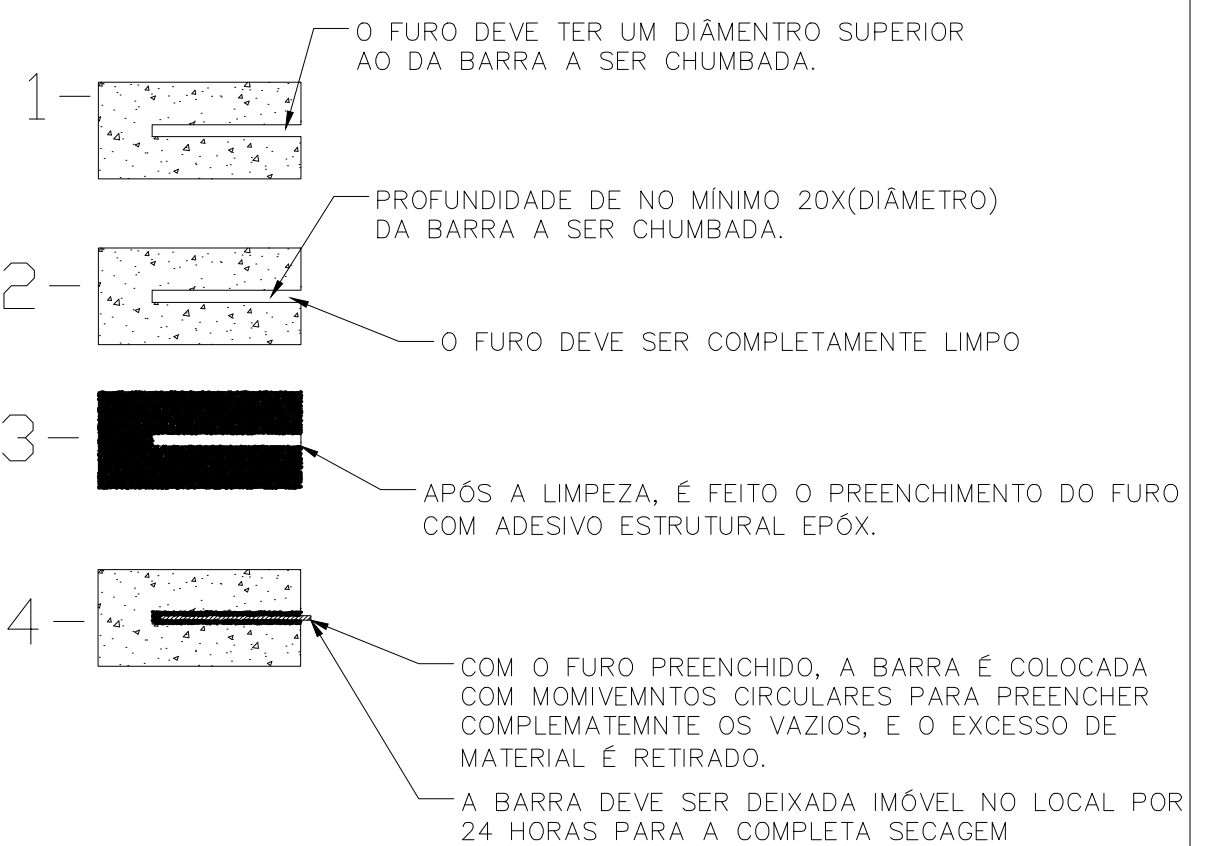
AÇO	N	DIAM (mm)	QUANT	C.UNIT (cm)	C.TOTAL (cm)
CA60	1	5.0	1714	77	131978
	2	5.0	202	85	17170
	3	5.0	119	24	2856
	4	5.0	122	97	11834
	5	5.0	189	24	4536
CA50	6	5.0	34	26	884
	7	5.0	21	26	546
	8	8.0	80	VAR	VAR
	9	10.0	360	302	108720
	10	12.5	54	310	16740

Resumo do aço

AÇO	DIAM (mm)	C.TOTAL (m)	QUANT + 10 % (Barras)	PESO + 10 % (kg)
CA50	8.0	77.2	7	30.5
	10.0	1087.2	100	737.3
	12.5	167.4	16	177.4
CA60	5.0	1736.6	159	294.2
PESO TOTAL (kg)				1249.2

Volume de concreto (C-25) = 10.15 m³
Área de forma = 201.6 m²

PROCEDIMENTO PARA FIXAÇÃO DA ESTRUTURA NOVA NA EXISTENTE

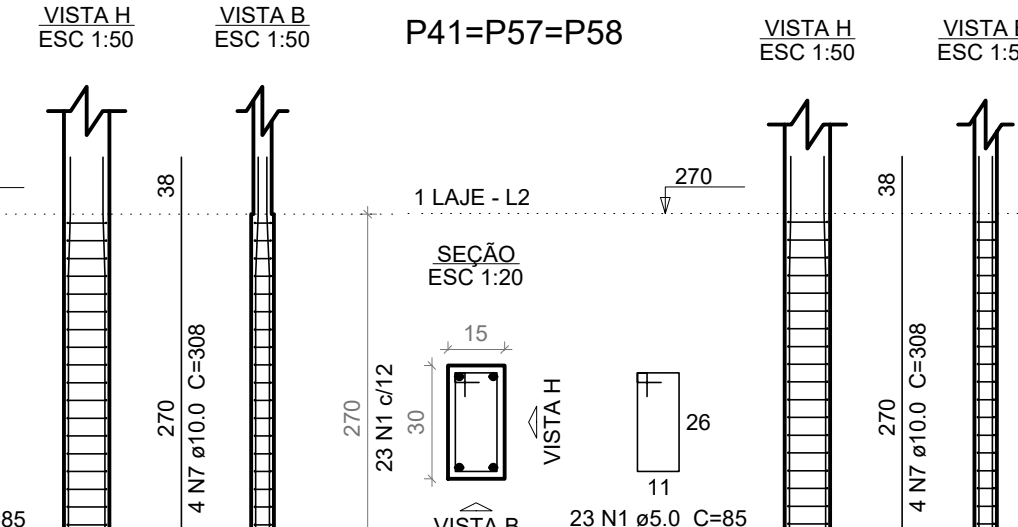
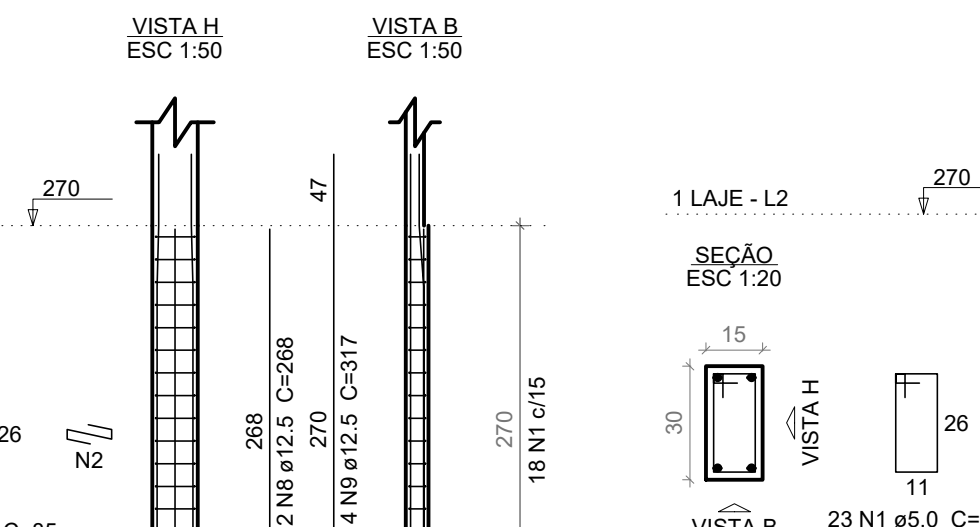
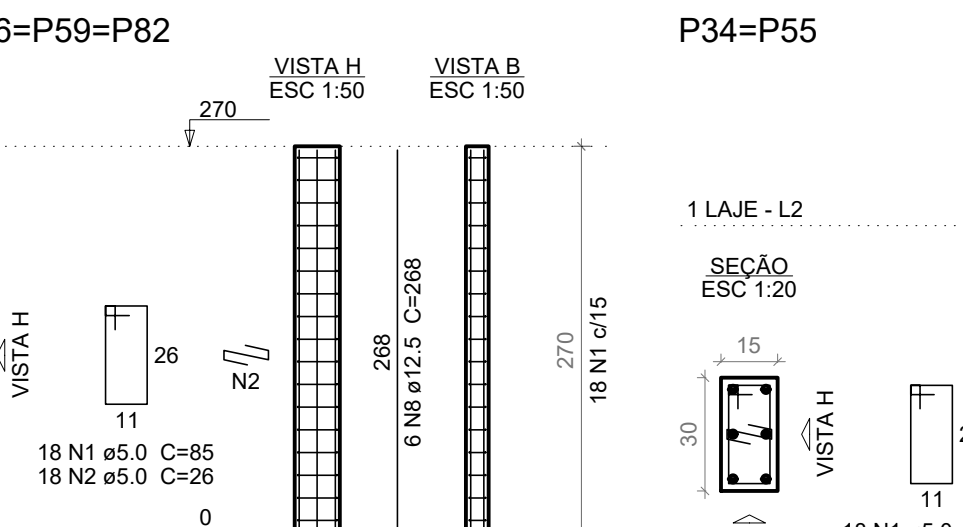
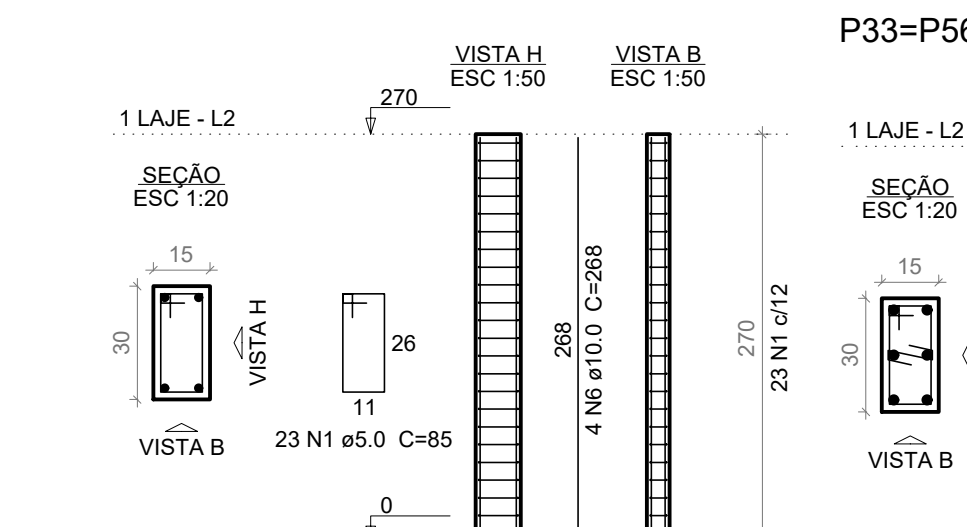
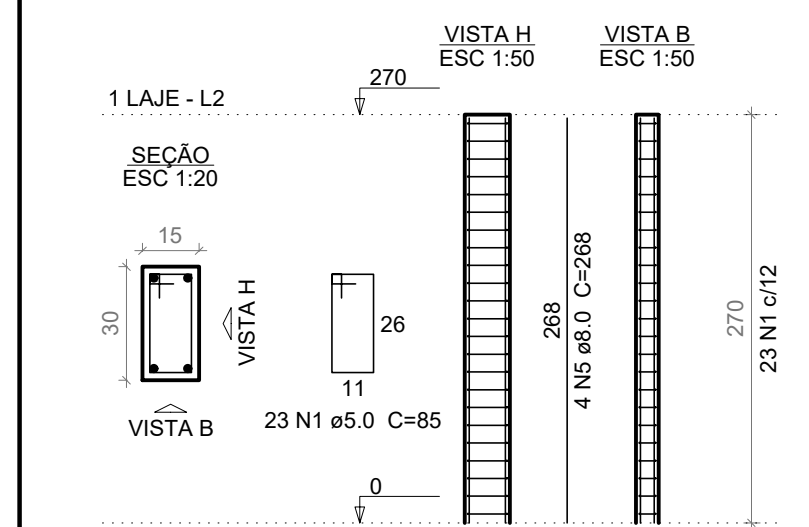


PILARES ATÉ A 1ª LAJE

P1=P2=P3=P4=P5=P6=P7=P8=P9=P10=
P105=P106=P107=P108=P109=P110=P111=P112=P113=P114

P11=P12=P13=P14=
P15=P16=P17=P18=P19=P20=
P21=P22=P23=P24=P25=P26=
P27=P28=P29=P30=P31=P32=
P40=P44=P45=P46=P49=P66=
P70=P71=P72=P75=P83=P84=
P85=P86=P87=P88=P89=P90=
P91=P92=P93=P94=P95=P96=
P97=P98=P99=P100=P101=
P102=P103=P104

P35=P36=P37=P38=P39=P50=
P51=P52=P53=P54=P61=P62=
P63=P64=P65=P76=P77=P78=
P79=P80

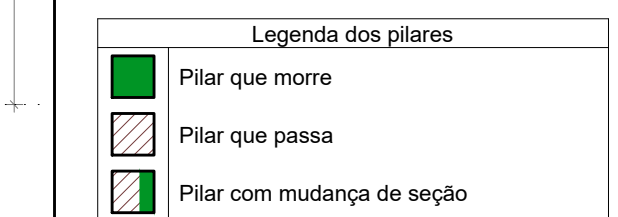


NOTAS:

- (A) PE - PILARES PRÉ MOLDADOS EXISTENTES
- (B) AS VIGAS QUE SE APOIAM NOS PE DEVEM SER ANCORADAS COM SKADUR
- (C) PILARES SEM SAPATAS DEVEM SER ANCORADOS NO RABD EXISTENTE COM SKADUR
- (D) REBAIXO DO PLATAFORMA = 10 CM
- (E) VERIFICAR MEDIDAS DO PLATAFORMA COM O FABRICANTE ANTES DA EXECUÇÃO DA CAIXA

Elemento	fk (MPa)
Vigas e lajes	25
Pilares	25
Sapatas	25

LEGENDA:



REV.	T.E.	DESCRIÇÃO	PROJ.	PROJ.	VER.	APR.	AUT.	DATA
REVISÕES								

T.E. TIPO DE EMISSÃO	(A) PRELIMINAR (B) PARA APROVAÇÃO (C) PARA CONHECIMENTO (D) PARA COTAÇÃO (E) PARA CONSTRUÇÃO (F) CONFORME COMPRADO (G) CONFORME CONSTRUÍDO (H) CANCELADO	ASSINATURA	DATA
APROVAÇÃO			
RT		ASSINATURA	DATA
		NOME	CREA/MG
		PROJETISTA	
		SUPERVISOR	

CONEP CONSULTORIA PREFEITURA MUNICIPAL DE MURIAÉ SECRETARIA DE OBRAS

PROJETO ESTRUTURAL
PROJETO EXECUTIVO
REFORMA, ADQUAÇÃO E APLIAÇÃO DO MERCADO DO PRODUTOR MUNICIPAL
RUA SINVAL FLORENCIO DA SILVA, BAIRRO CENTRO
ARMAÇÃO DOS PILARES DO TÉRREO E 1ª LAJE

ESCALA INDICADA

REV: Nº: 00 OS-36/2022 FOLHA 02 DE 13

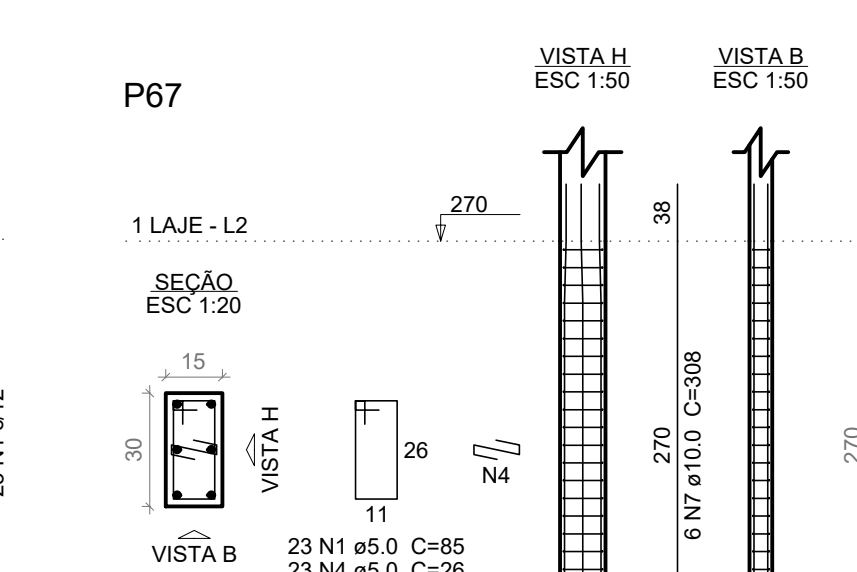
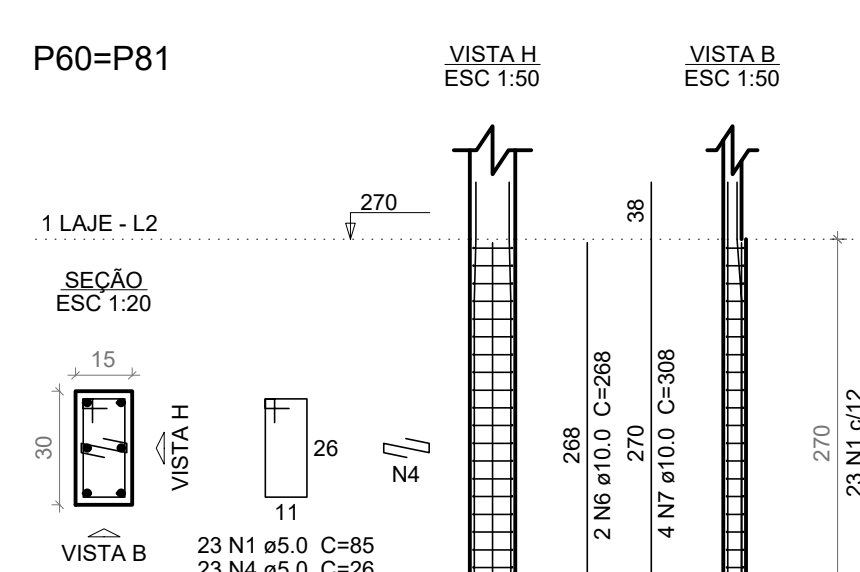
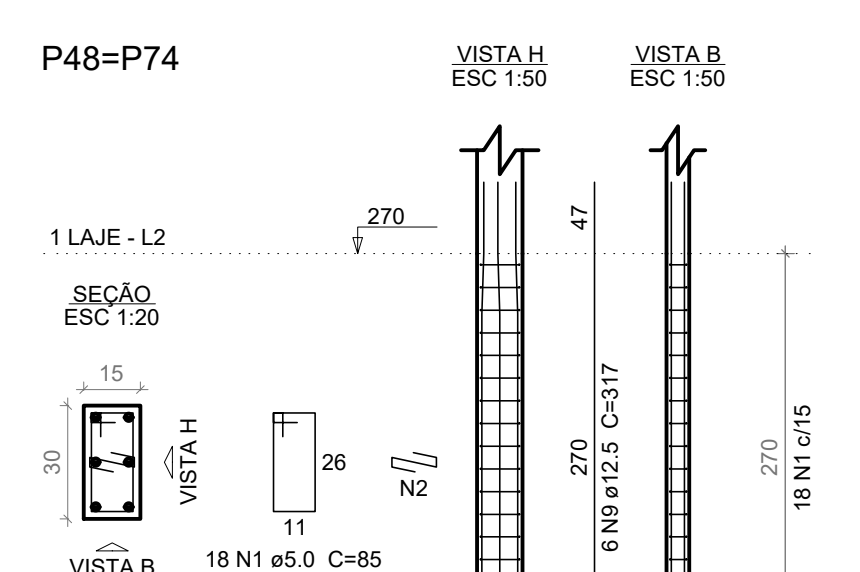
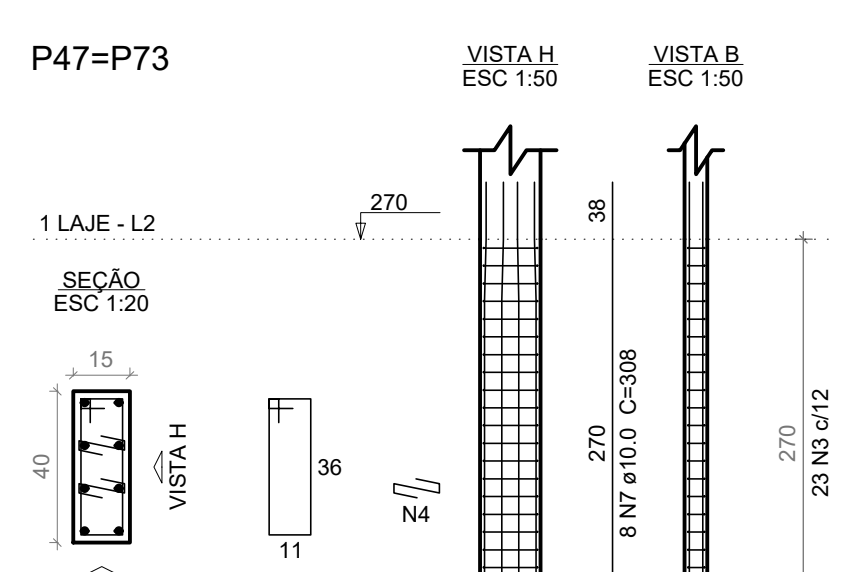
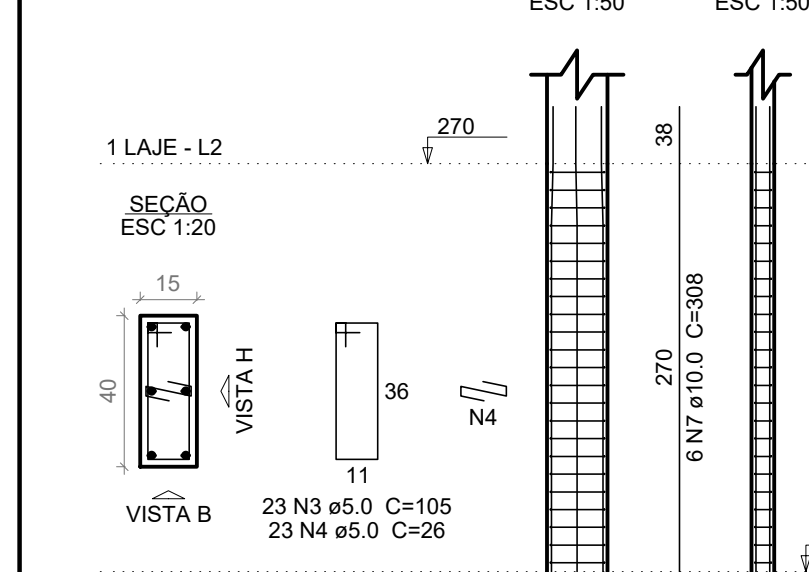
P42=P43=P69

P47=P73

P48=P74

P60=P81

P67



Relação do aço

AÇO	N	DIAM (mm)	QUANT	C.UNIT (cm)	C.TOTAL (cm)
CA60	1	5.0	2444	85	207740
	2	5.0	162	26	4212
	3	5.0	133	105	13965
	4	5.0	230	26	5980
	5	5.0	80	268	21440
	6	8.0	220	268	58960
	7	10.0	140	308	43120
	8	12.5	28	268	7504
	9	12.5	26	317	8242

Resumo do aço

AÇO	DIAM (mm)	C.TOTAL (m)	QUANT + 10 % (Barras)	PESO + 10 % (kg)
CA50	8.0	214.4	20	93.1
	10.0	1020.8	94	692.3
	12.5	157.5	15	166.9
CA60	5.0	2319	213	393.2
PESO TOTAL (kg)				1249.2

Volume de concreto (C-25) = 14.09 m³
Área de forma = 280.26 m²