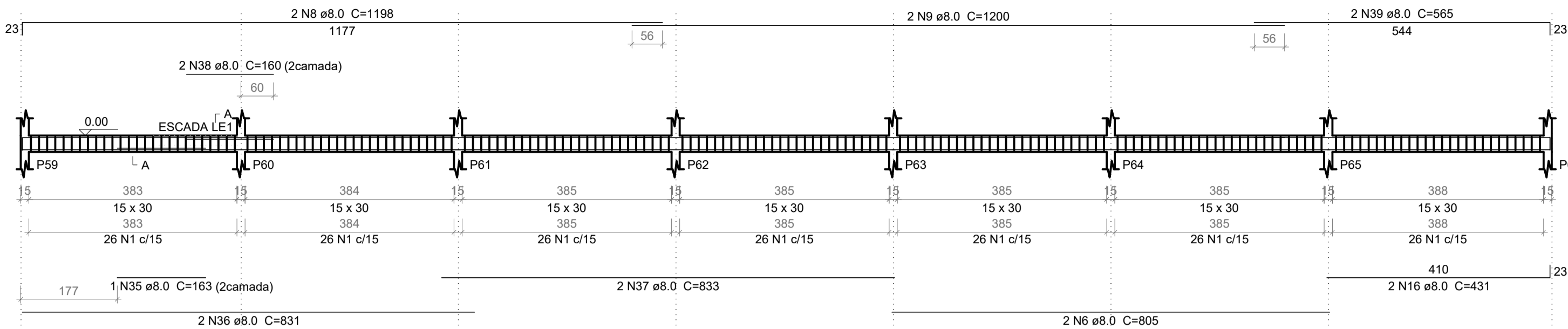
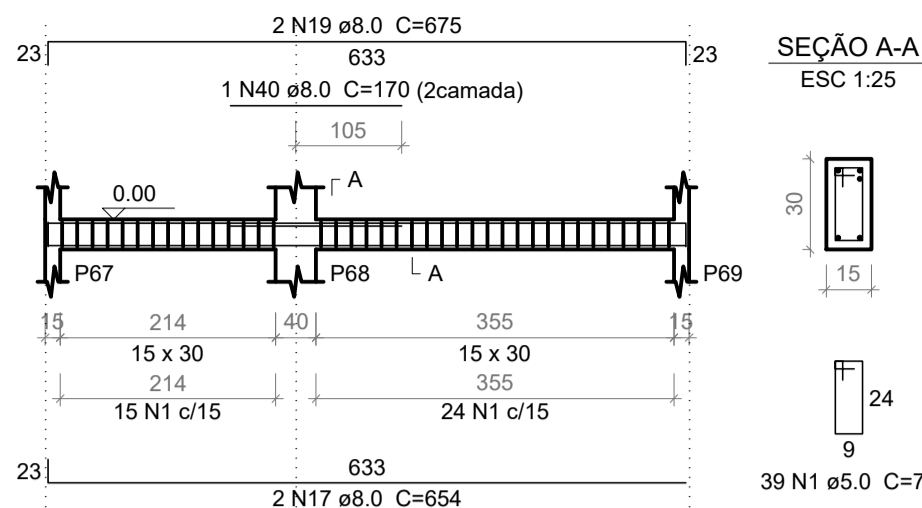


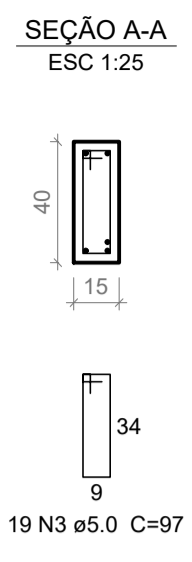
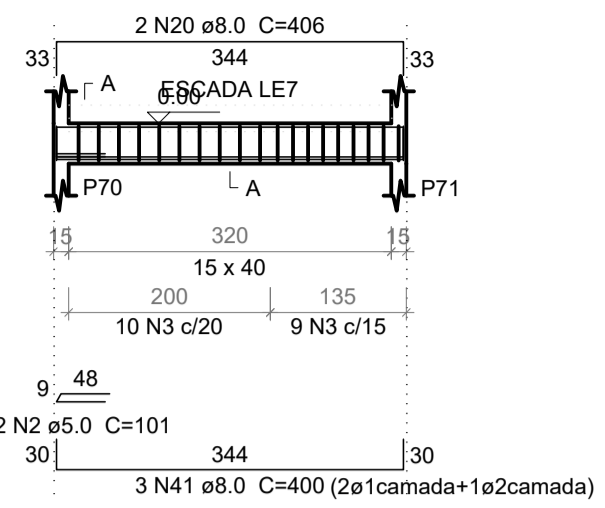
**V18 (15 x 30)**  
ESC 1:75



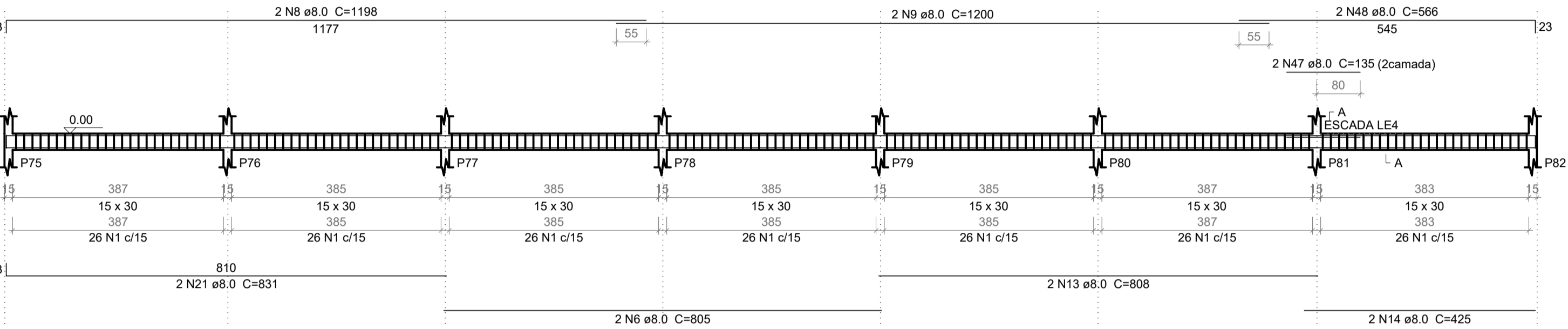
**V19 (15 x 30)**  
ESC 1:75



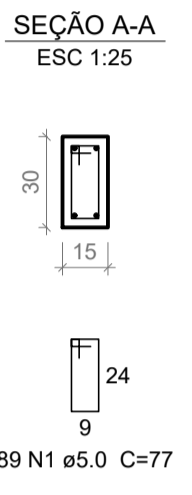
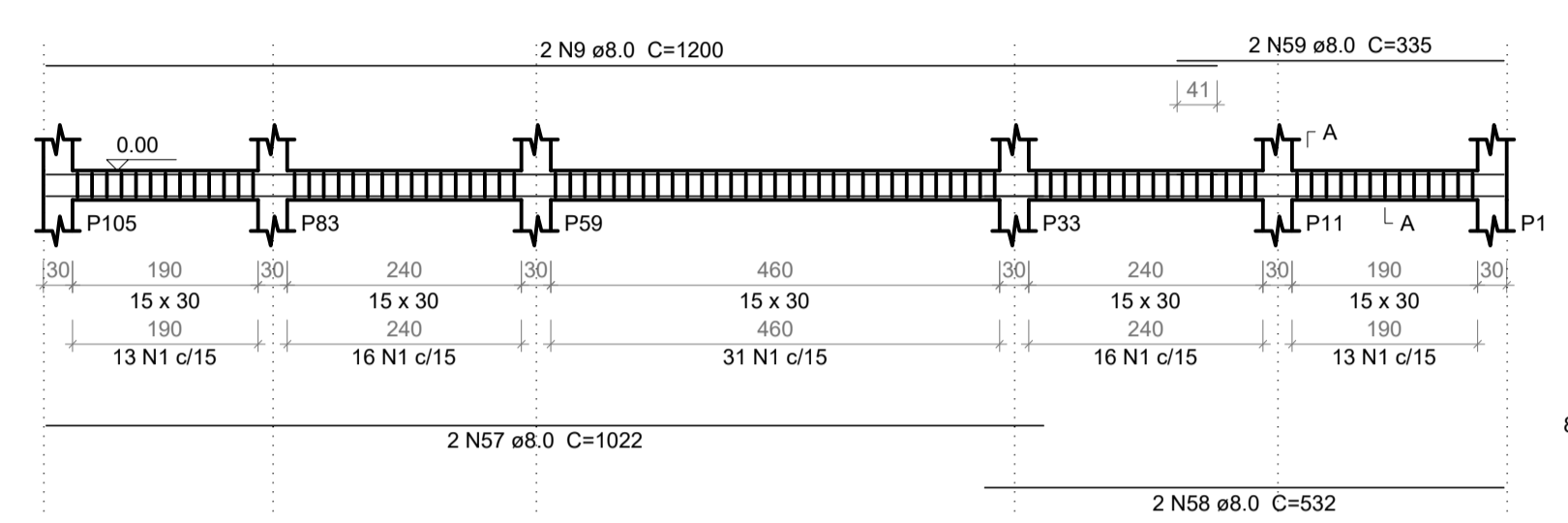
**V20 (15 x 40)**  
ESC 1:75



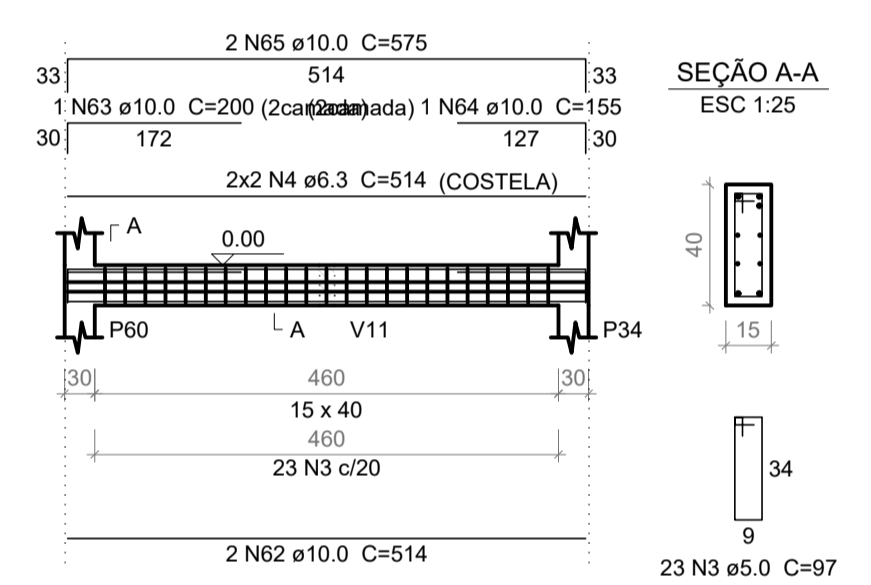
**V22 (15 x 30)**  
ESC 1:75



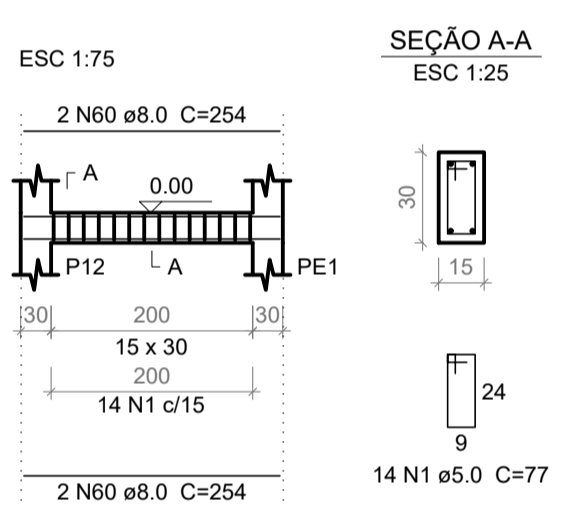
**V27 (15 x 30)**  
ESC 1:75



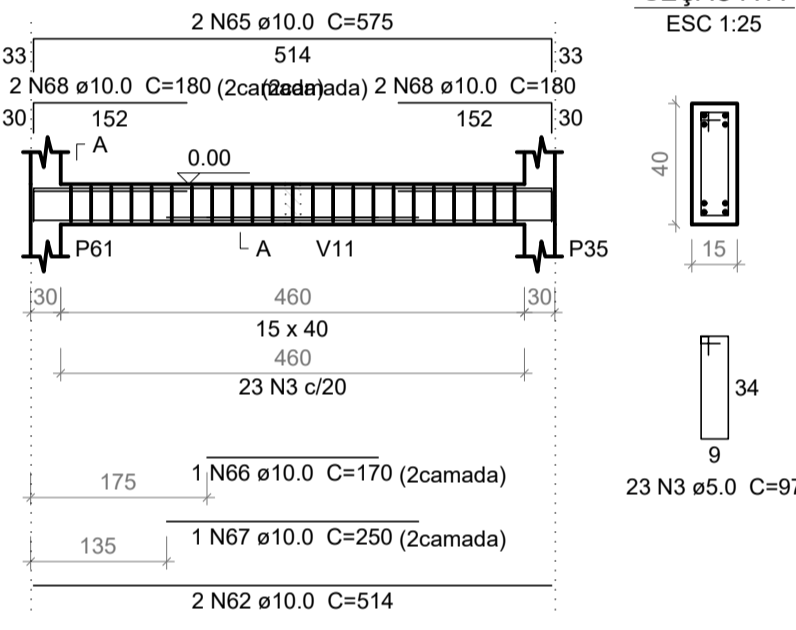
**V29=V53=V68=V86 (15 x 40)**  
ESC 1:75



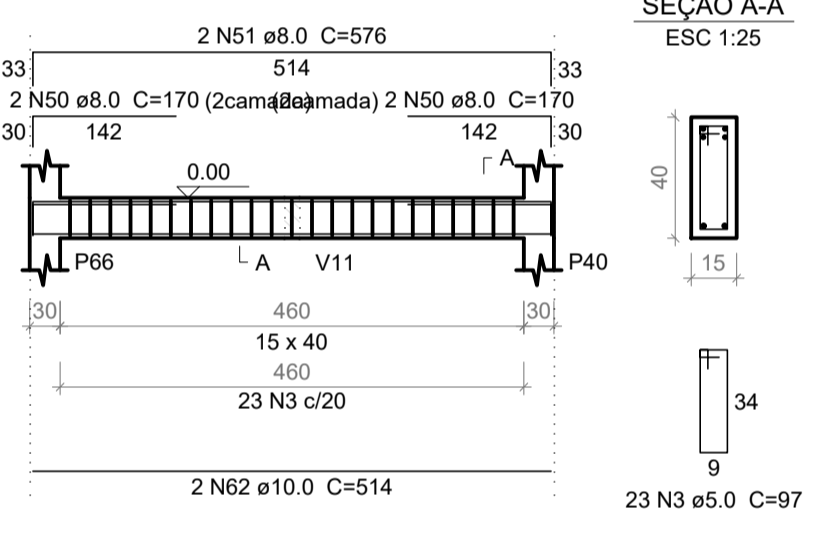
**V28=V30=V31=V33=V34=V36=V37=V39=V40=V42=V43=V45=V46=V49=V51=V52=V54=V56=V59=V61=V62=V64=V66=V69=V70=V72=V73=V75=V76=V78=V79=V81=V82=V84=V85=V87 (15 x 30)**  
Térreo



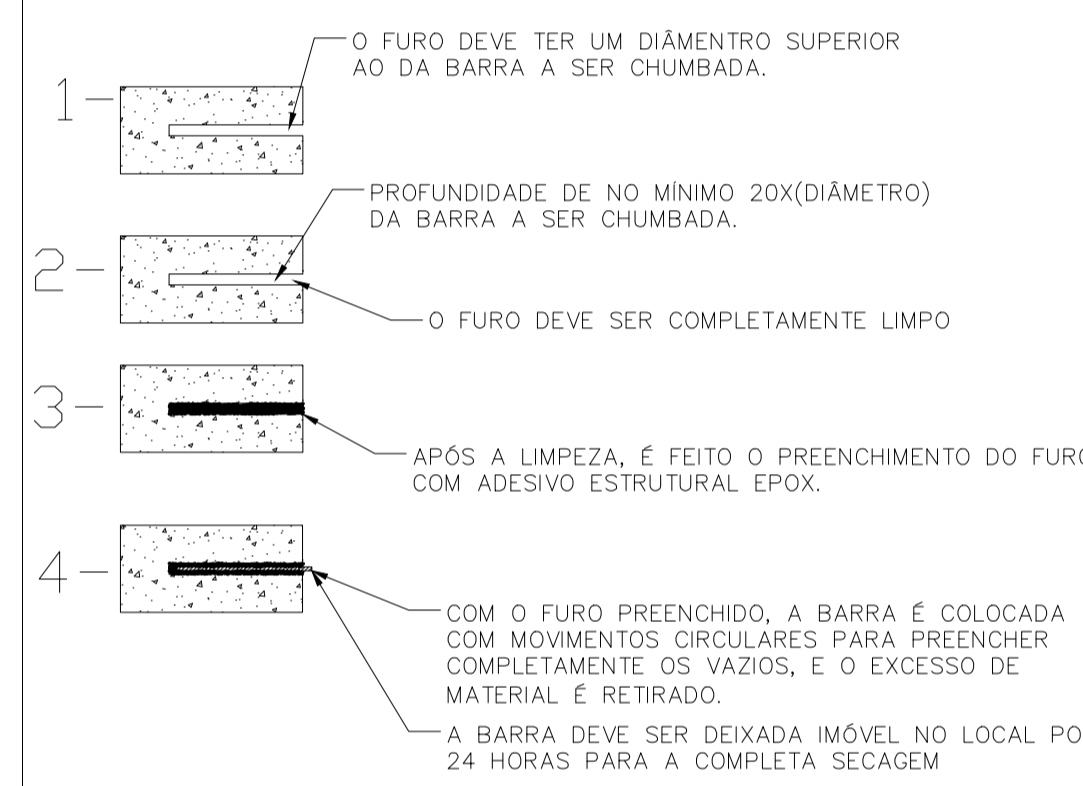
**V32=V35=V38=V41=V44=V71=V74=V77=V80=V83 (15 x 40)**  
ESC 1:75



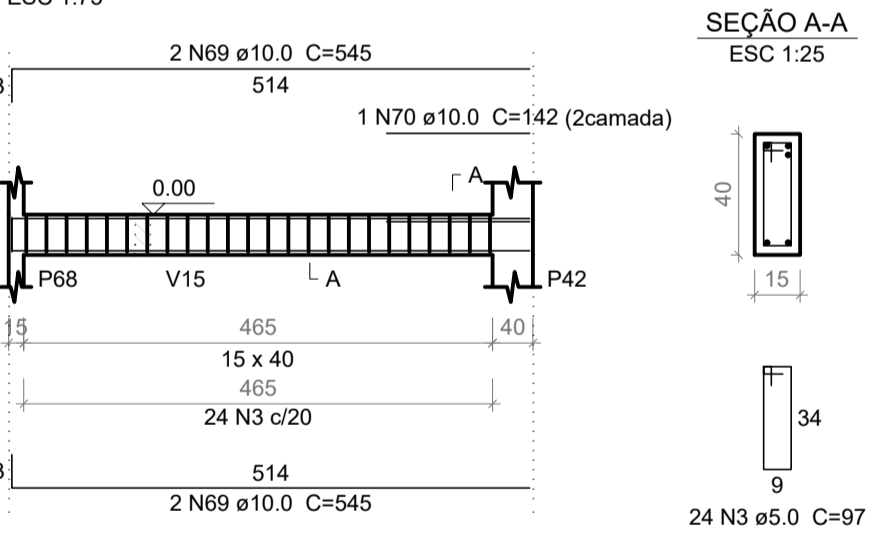
**V47=V48=V60 (15 x 40)**  
ESC 1:75



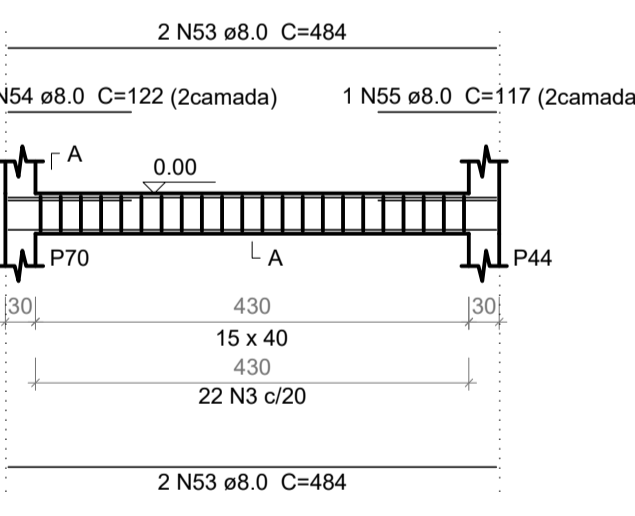
**PROCEDIMENTO PARA FIXAÇÃO DA ESTRUTURA NOVA NA EXISTENTE**



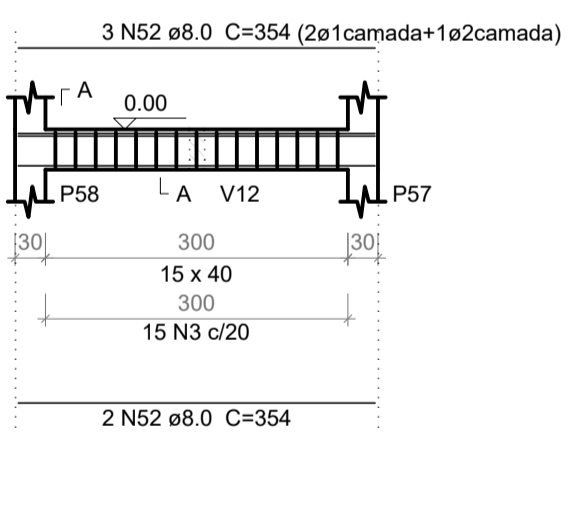
**V50 (15 x 40)**  
ESC 1:75



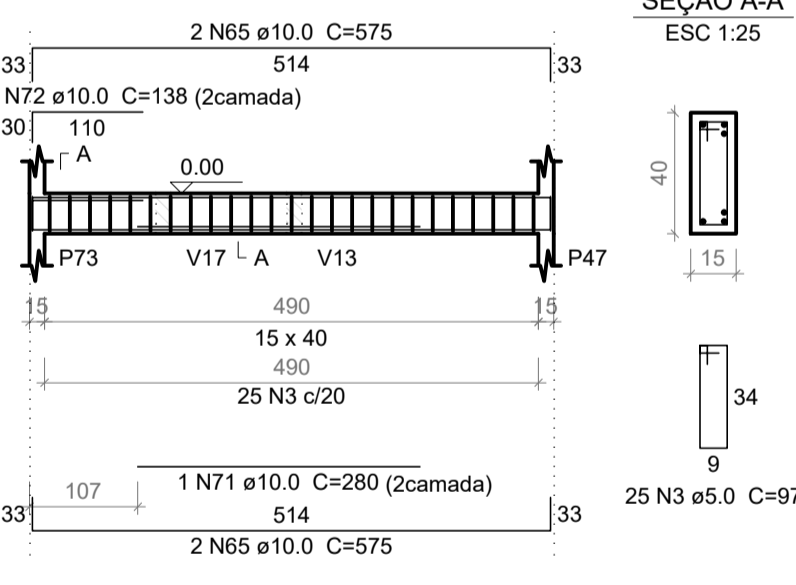
**V57=V58 (15 x 40)**  
ESC 1:75



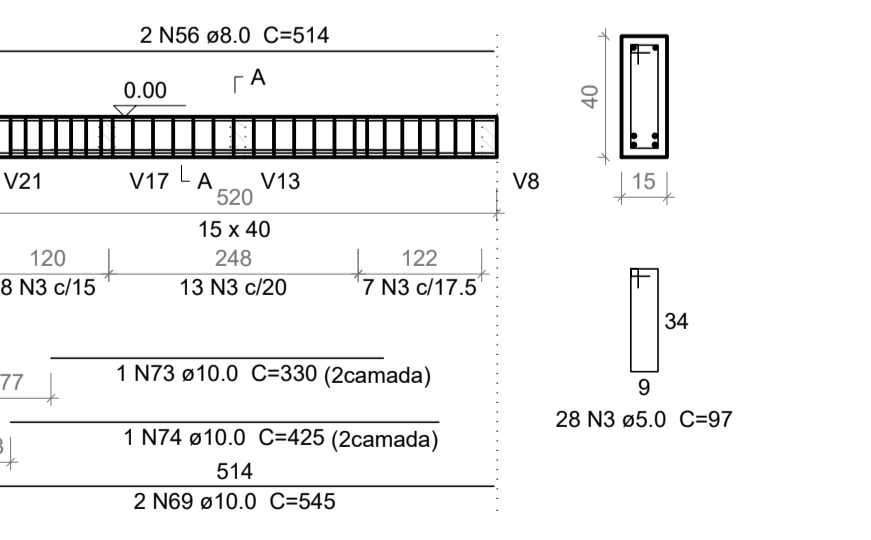
**V55 (15 x 40)**  
ESC 1:75



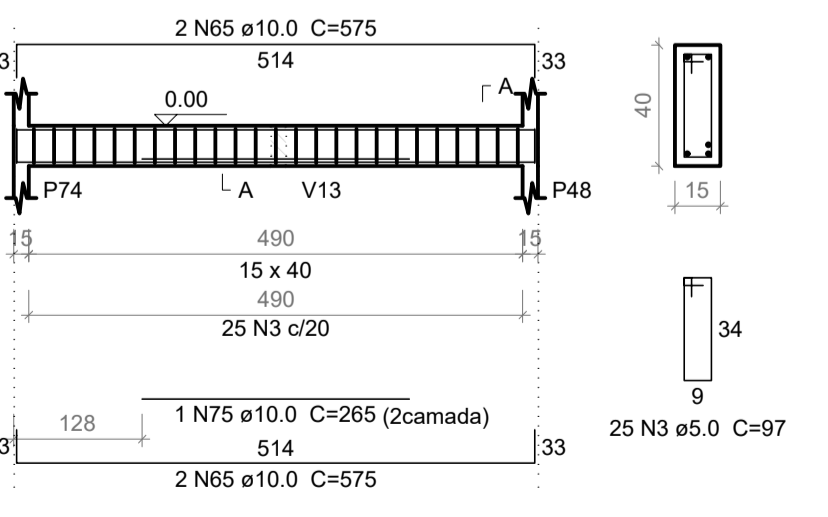
**V63 (15 x 40)**  
ESC 1:75



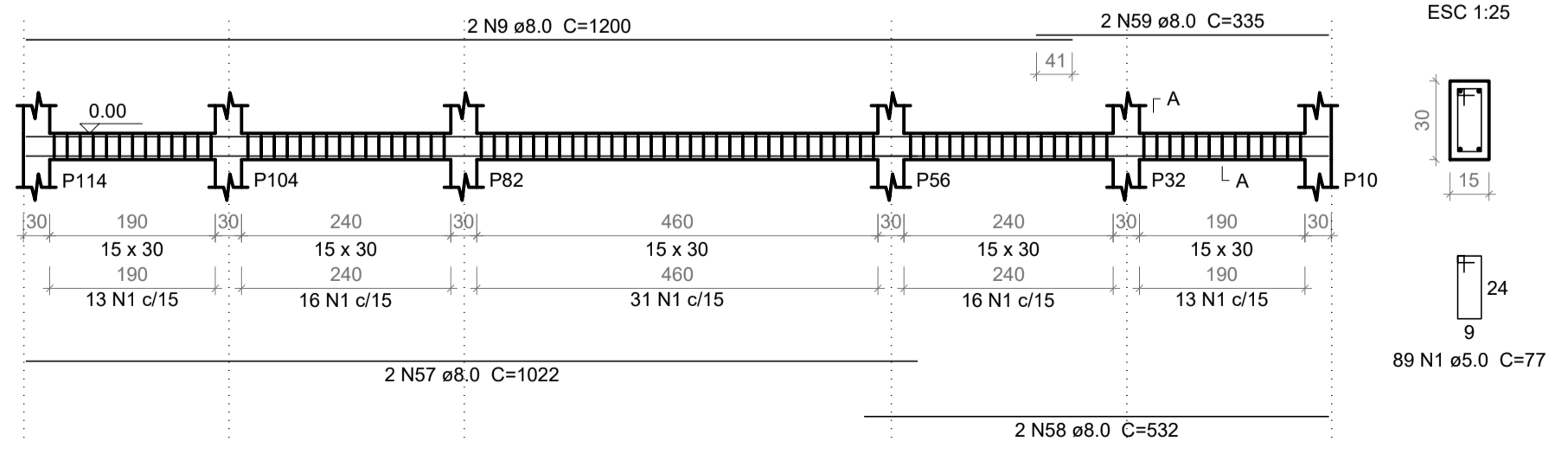
**V65 (15 x 40)**  
ESC 1:75



**V67 (15 x 40)**  
ESC 1:75



**V88 (15 x 30)**  
ESC 1:75

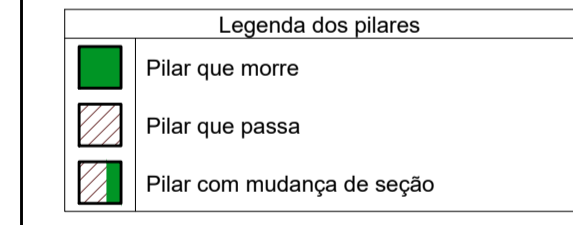


**NOTAS:**

- (A) PE - PILARES PRÉ MOLDADOS EXISTENTES
- (B) AS VIGAS QUE SE APOIAM NOS PE DEVEM SER ANCORADAS COM SIKADUR
- (C) PILARES SEM SAPATAS DEVEM SER ANCORADOS NO RADIER EXISTENTE COM SIKADUR
- (D) REBAIXO DO PLATIFORMA 410 CM
- (E) VERIFICAR MEDIDAS DO PLATIFORMA COM O FABRICANTES ANTES DA EXECUÇÃO DA CAIXA

Elemento	fck (MPa)
Vigas e lajes	25
Pilares	25
Sapatatas	25

**LEGENDA:**



REV.	T.E.	DESCRIÇÃO	PROJ.	PROJ.	VER.	APR.	AUT.	DATA

REVISÕES		
T.E. TIPO DE EMISSÃO	(A) PRELIMINAR (B) PARA APROVAÇÃO (C) PARA CONHECIMENTO (F) CONFORME COMPRADO	(D) PARA COTAÇÃO (E) PARA CONSTRUÇÃO (G) CONFORME CONSTRUÍDO (H) CANCELADO
APROVAÇÃO	ASSINATURA	DATA
ASSINATURA		
RT	NOME	DATA
PROJETISTA	HENRIQUE VITAL DO CARMO FREITAS	SET/2022
SUPERVISOR	FABIOLA BATISTA PIRES	SET/2022

**CONEP CONSULTORIA** PREFEITURA MUNICIPAL DE MURIAÉ SECRETARIA DE OBRAS

**PROJETO ESTRUTURAL**  
PROJETO EXECUTIVO  
REFORMA, ADQUAÇÃO E APLIAÇÃO DO MERCADO DO PRODUTOR MUNICIPAL  
RUA SINVAL FLORENCIO DA SILVA, BAIRRO CENTRO  
ARMAÇÃO DAS VIGAS DO TÉRREO (02-02)

ESCALA INDICADA

REV: 00 Nº: OS-36/2022 FOLHA 07 DE 13

**VIGAS DO TÉRREO**