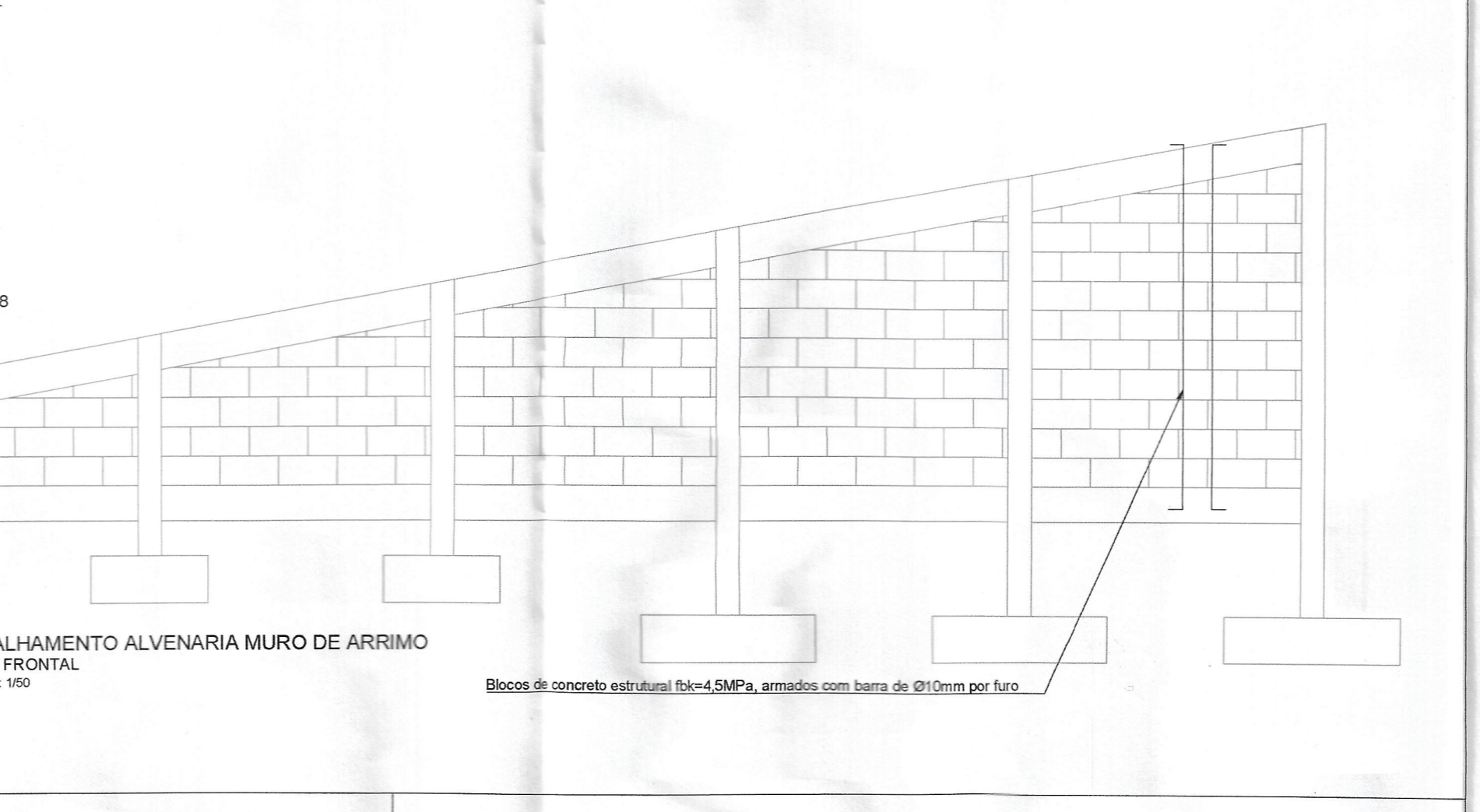
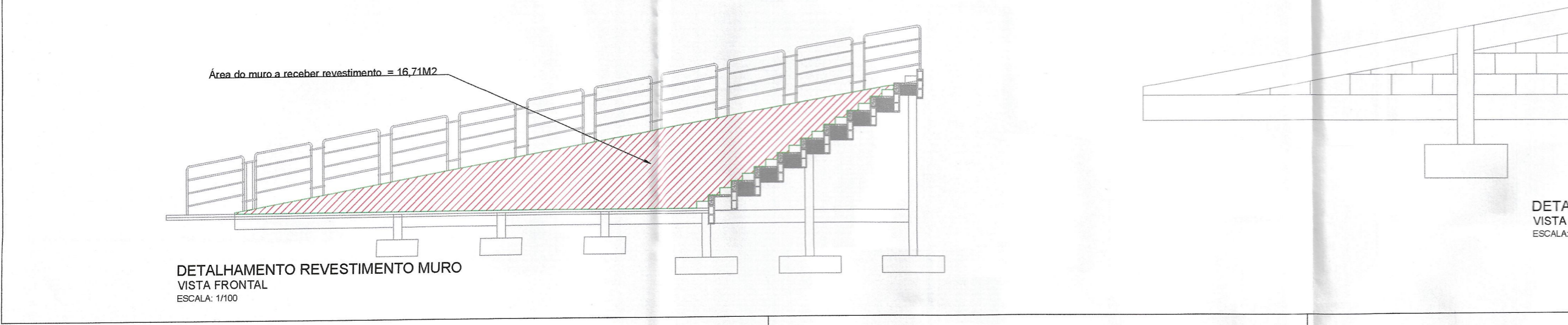
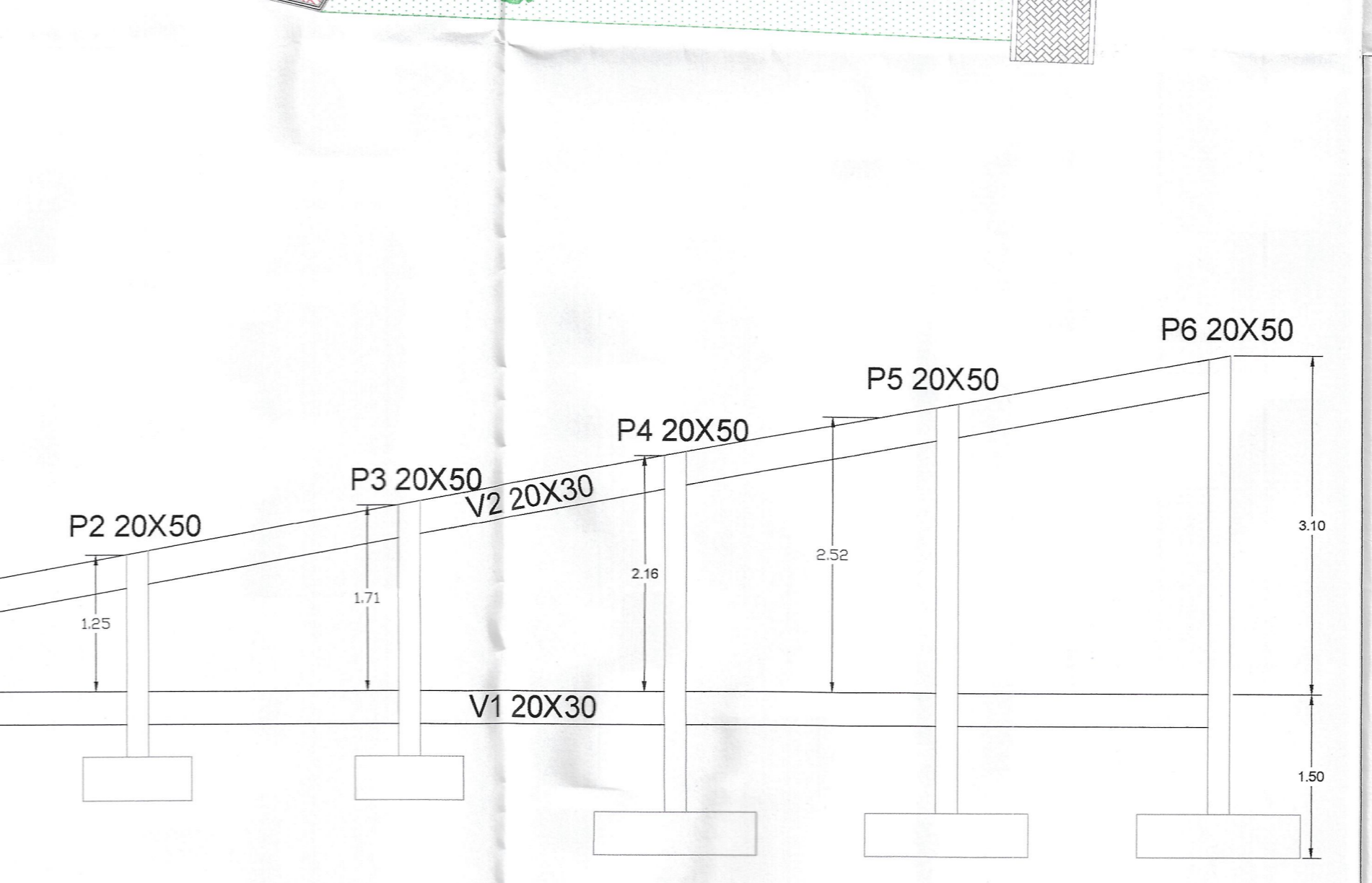
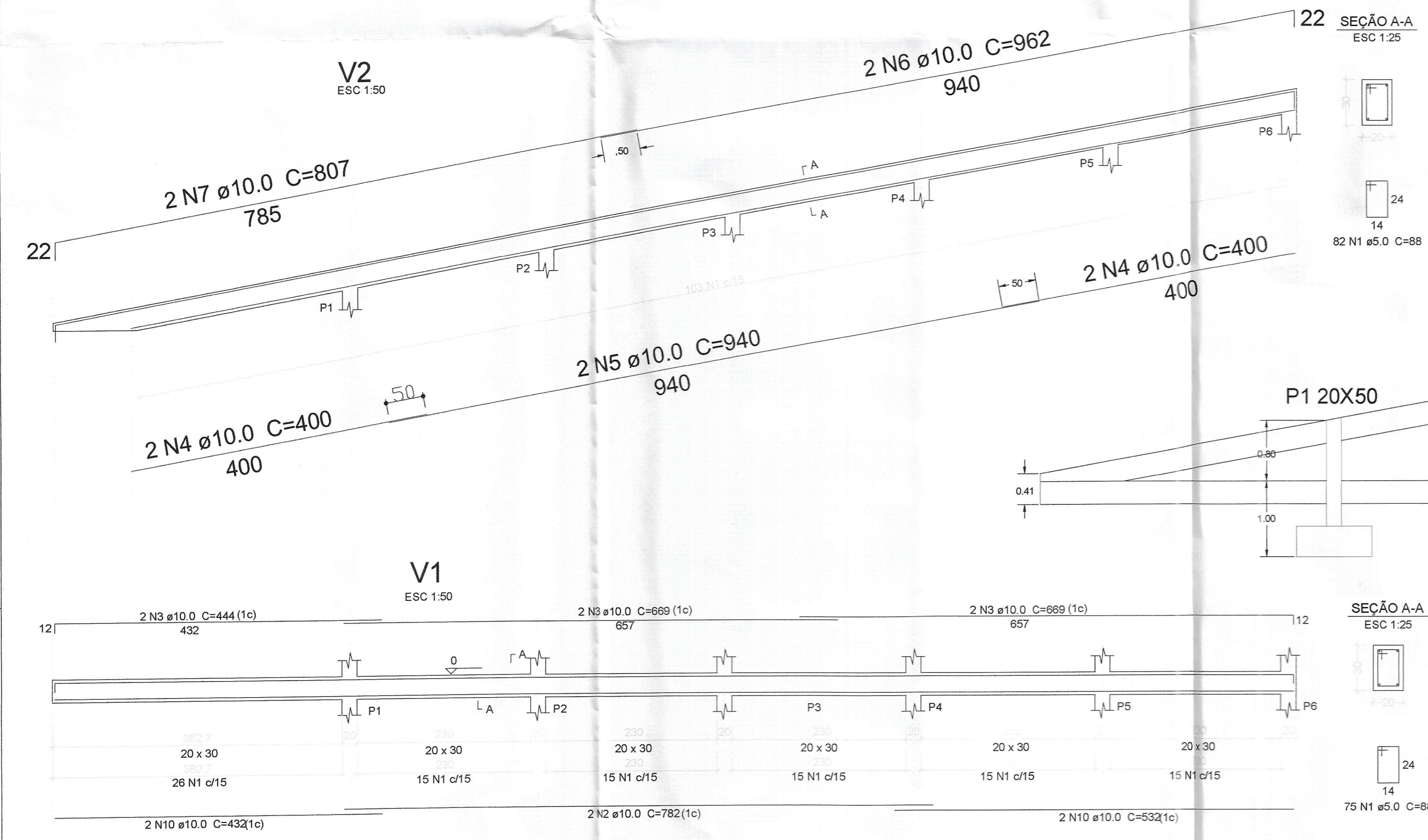
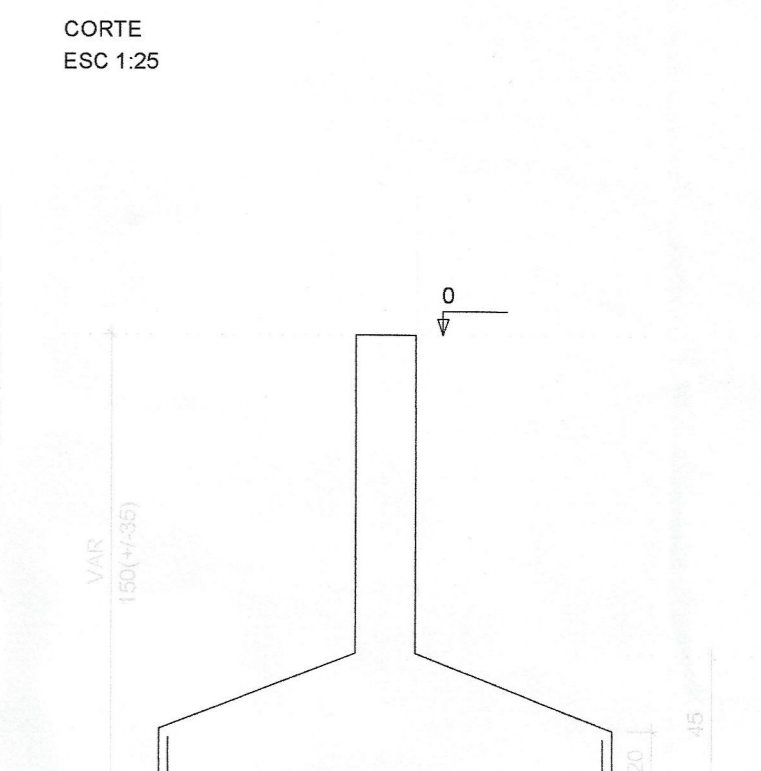
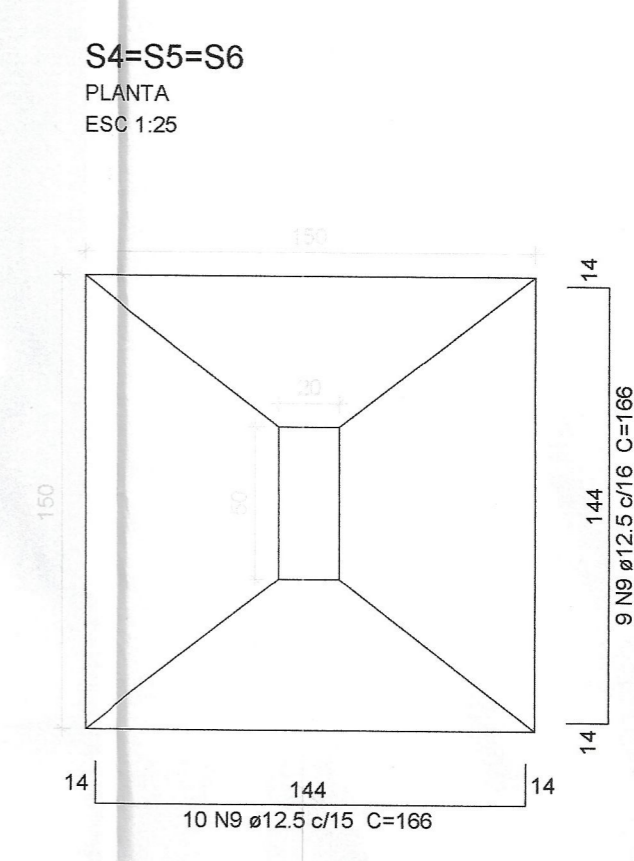


2xS1	4xS3
V1	
V2	

ÇO	N	DIAM	Q	UNIT (cm)	C.TOTAL (cm)
CA60	1	5.0	205	88	18040
CA50	2	10.0	2	782	1564
	3	10.0	2	669	1338
	4	10.0	4	400	1600
	5	10.0	2	940	1880
	6	10.0	2	962	1924
	7	10.0	2	307	1614
	8	12.5	24	136	3264
	9	12.5	76	166	12616
	10	10.0	2	532	1064
	11	10.0	2	432	864
	12	10.0	2	444	888
	13	10.0	2	657	1314

ÇO	DIAM	C.TOTAL (m)	PESO (kg)
CA50	10.0	140.5	86.69
CA60	12.5	158.8	152.93
CA60	5.0	180.4	27.79
PESO TOTAL			
CA50		239.62	
CA60		27.79	

Vol. de concreto total (C-25) = 5,37 m<sup>3</sup>  
Área de forma total = 31 m<sup>2</sup>



**PREFEITURA DE MURIAÉ**  
SECRETARIA MUNICIPAL DE OBRAS PÚBLICAS  
**MURO ARRIMO**

PROJETO DE MURO DE ARRIMO

PREFEITURA DE MURIAÉ / CNPJ 17.947.581/0001-76 PREFEITO MARCOS GUARINO DE OLIVEIRA	PLANTA GERAL, SAPATAS E VIGAS DO MURO DE ARRIMO 1
SECRETARIA MUNICIPAL DE OBRAS PÚBLICAS SECRETÁRIO VILSON FERREZ FILHO	Esquina da Alameda dos Ipiris com Travessa das Espirheiras e Travessa das Murtas - Bairro Primavera - MURIAÉ - MG
R. T. PROJETO: ENG. ARLAN DO CARMO MENDONÇA/CREA-MG Nº 177324-D	ARQUIVO: Muro Primavera.dwg DATA: 25/10/2022 ESC: INDICADAS 01/05