

Relação do aço

P1	P2	P3	P4	P5	P6
AÇO	N	DIAM	Q	UNIT	C.TOTAL (cm)
CA60	1	5,0	135	128	17280
	2	5,0	241	128	30848
	3	5,0	171	128	21888
CA60	4	12,5	6	171	1026
	5	12,5	6	122	732
	6	12,5	32	214	8848
	7	12,5	8	167	1336
	8	12,5	24	192	4608
	9	12,5	8	113	1416
	10	12,5	8	113	1416
	11	12,5	8	162	1296

Resumo do aço

AÇO	DIAM	C.TOTAL (m)	PESO (kg)
CA50	12,5	187	180,3
CA60	5,0	242,7	37,3
PESO TOTAL			217,6
CA50	180,3		
CA60	37,3		

Vol. de concreto total (C-25) = 1,96 m³

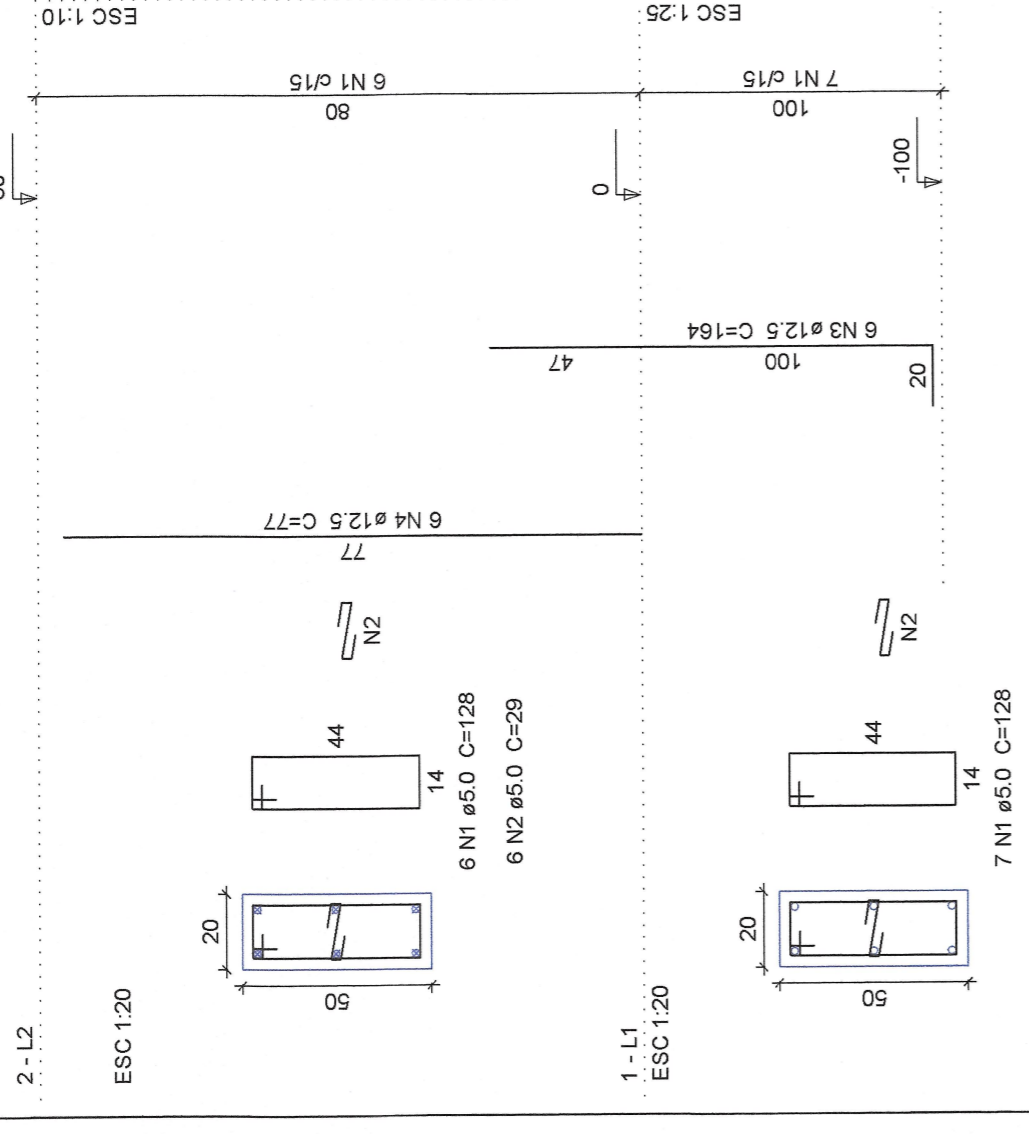
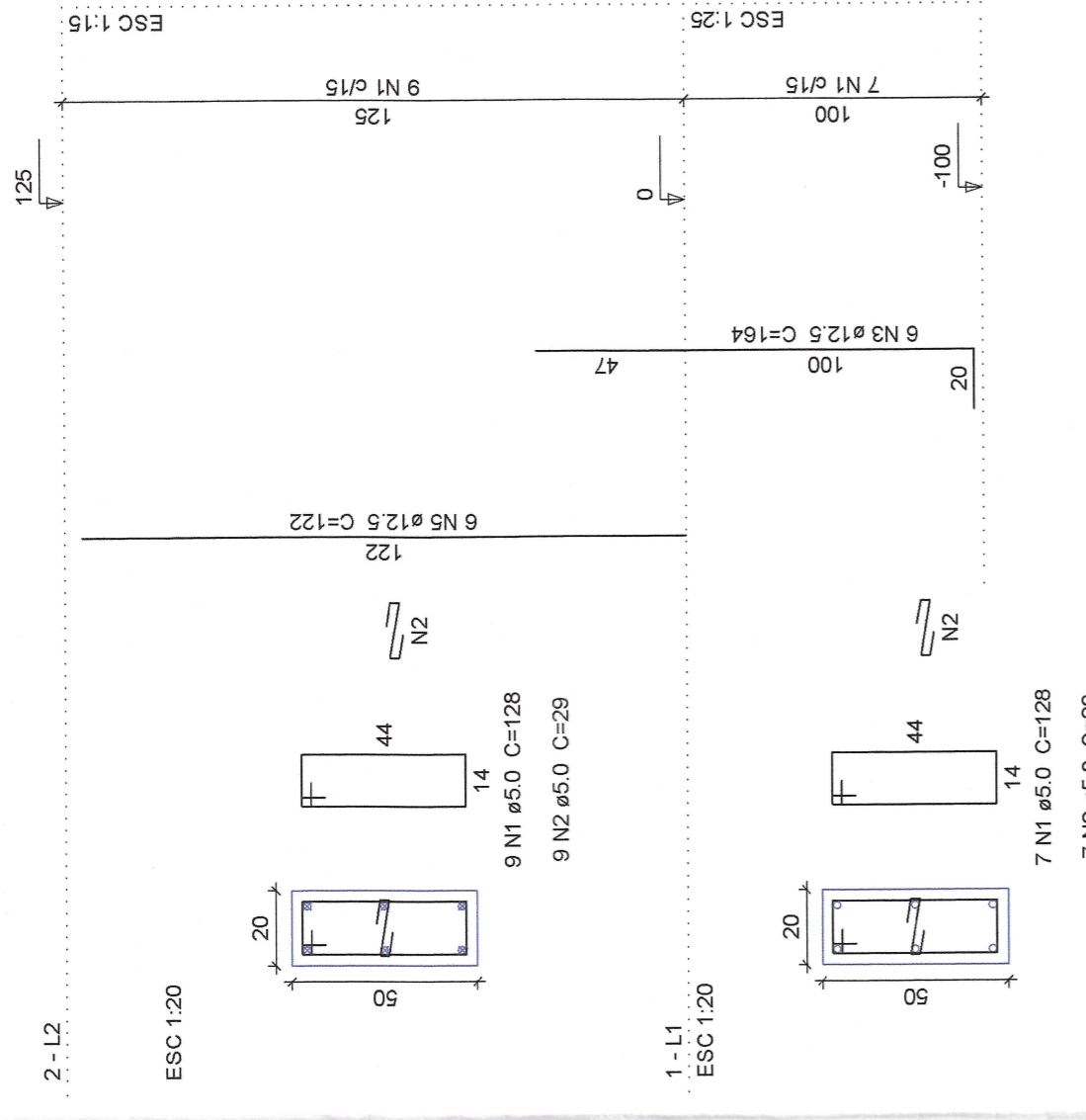
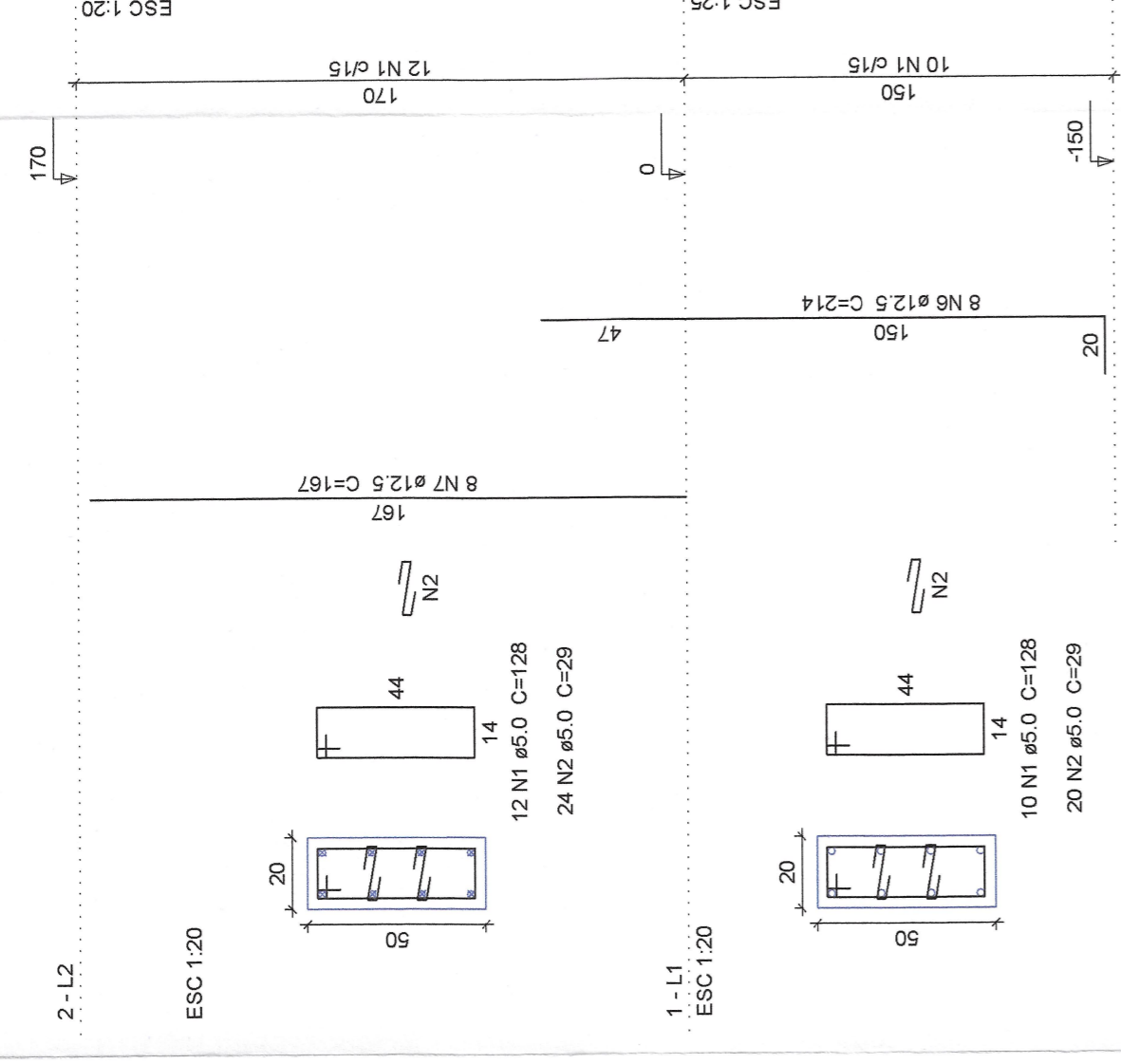
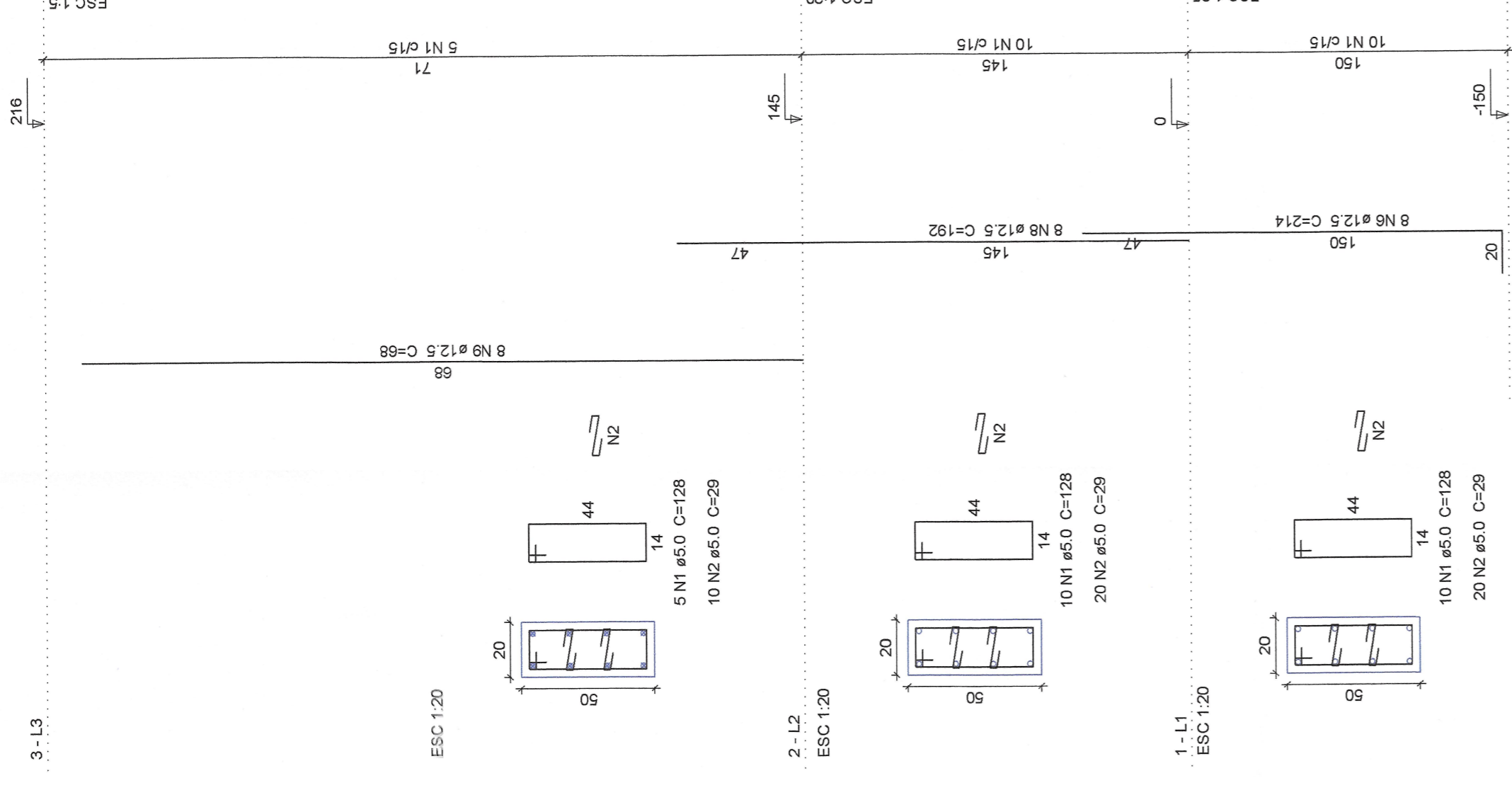
Área de forma total = 27,47 m²

P4

P3

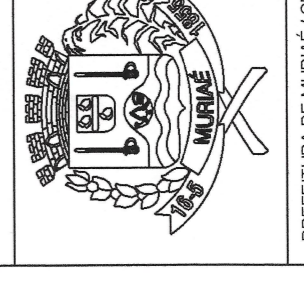
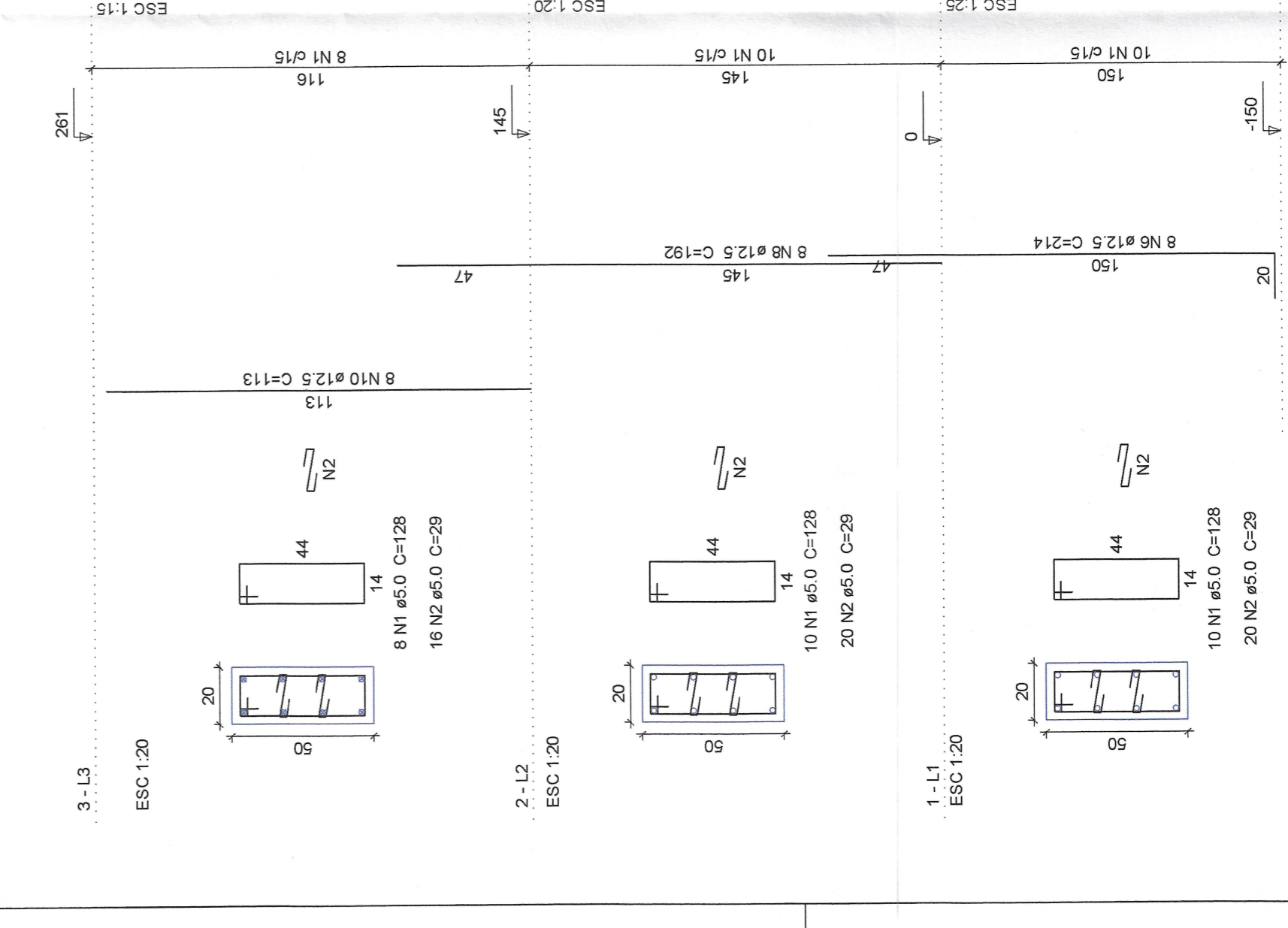
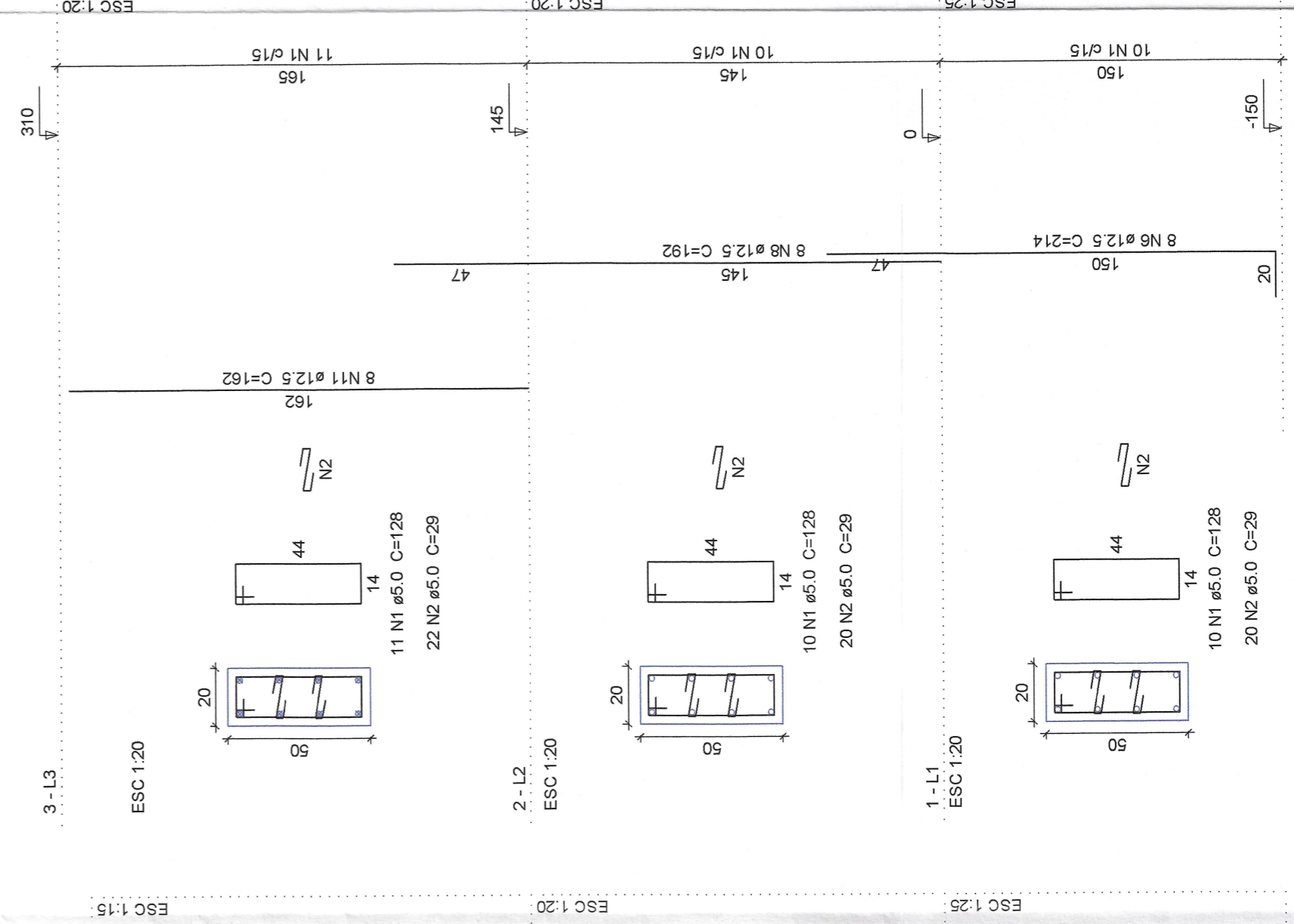
P2

P1



P6

P5



PREFEITURA DE MURIAÉ
SECRETARIA MUNICIPAL DE OBRAS PÚBLICAS

MURO ARRIMO

PROJETO DE MURO DE ARRIMO

PILARES DO MURO DE ARRIMO 1

PREFEITO MARCOS GUARIM DE OLIVEIRA

SECRETARIA MUNICIPAL DE OBRAS PÚBLICAS

SECRETÁRIO MUNICIPAL DE OBRAS PÚBLICAS

R. T. PROJETO

ENGENHEIRO CARMO MENDONÇA GREAIN 177264-D

DATA: 25/10/2022

ESC: INDICADAS

02/05