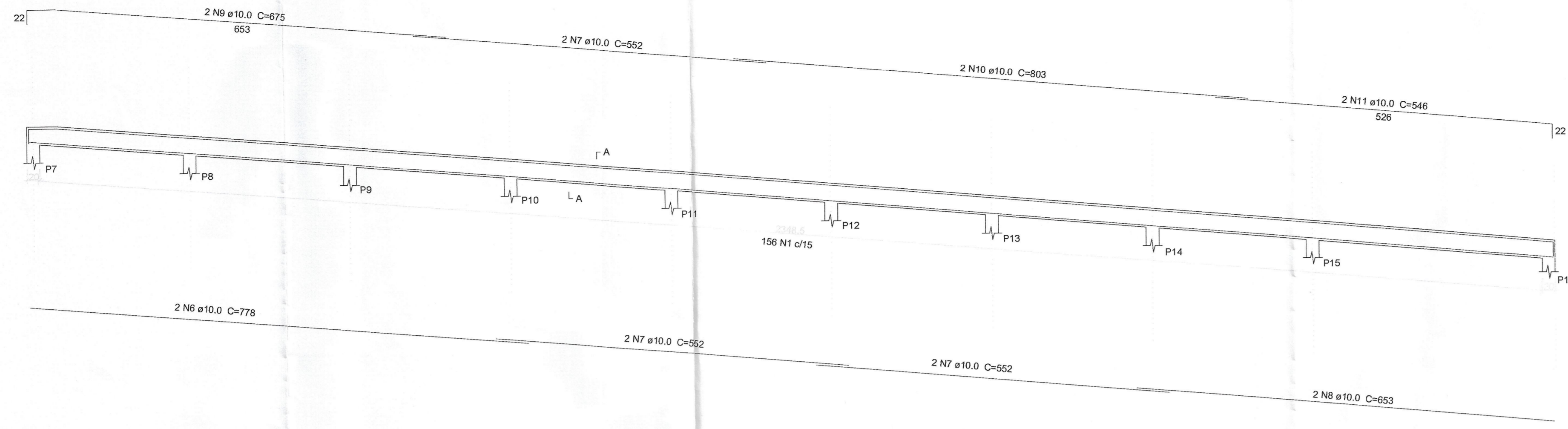
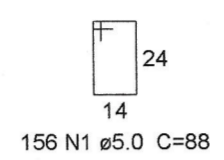
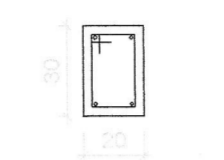


V4
ESC 1:50



SEÇÃO A-A
ESC 1:25



156 N1 ø5.0 C=88

Relação do aço

V3
V4

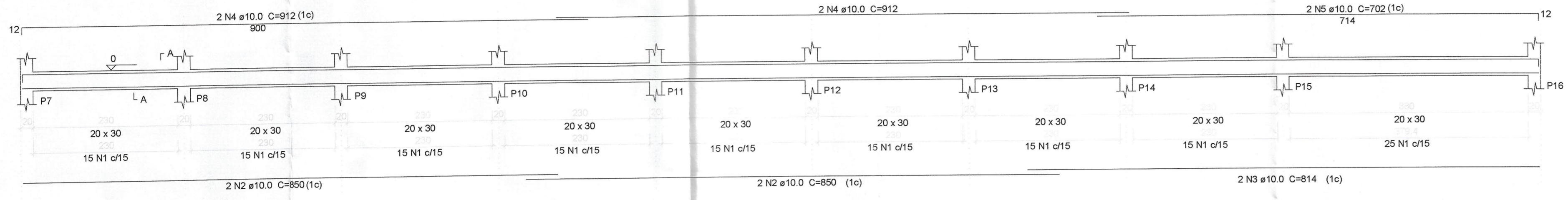
AÇO	N	DIAM	Q	UNIT (cm)	C.TOTAL (cm)
CA60	1	5.0	301	88	26488
CA50	2	10.0	4	850	3400
	3	10.0	2	814	1628
	4	10.0	4	912	3648
	5	10.0	2	702	1404
	6	10.0	2	778	1556
	7	10.0	6	552	3312
	8	10.0	2	653	1306
	9	10.0	2	675	1350
	10	10.0	2	803	1606
	11	10.0	2	546	1092

Resumo do aço

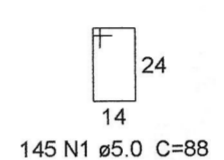
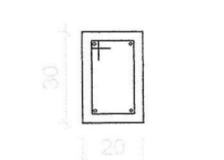
AÇO	DIAM	C.TOTAL (m)	PESO (kg)
CA50	10.0	20.3	12.52
CA60	5.0	264.9	40.79
PESO TOTAL			
CA50		198.1	
CA60		40.79	

Vol. de concreto total (C-25) = 2.61 m³
Área de forma total = 26.1 m²

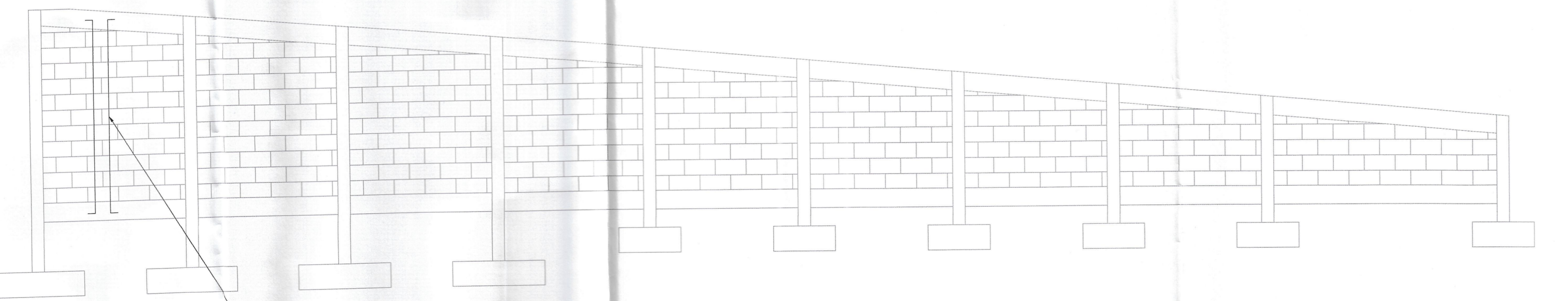
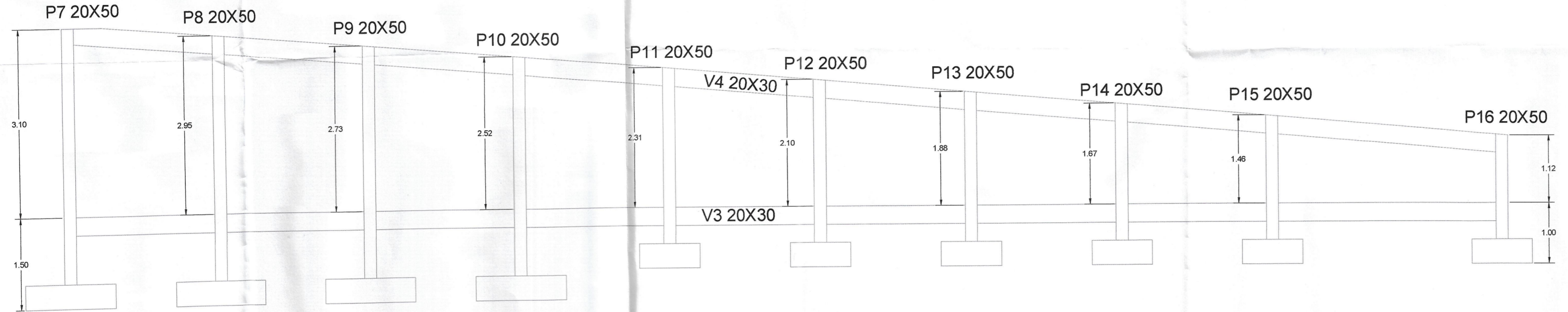
V3
ESC 1:50



SEÇÃO A-A
ESC 1:25

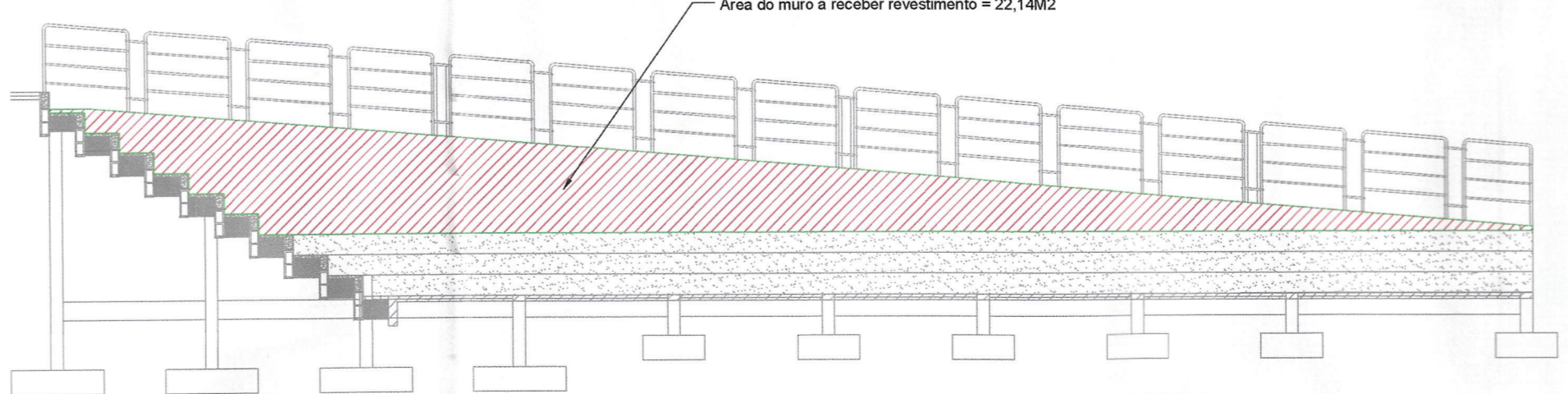


145 N1 ø5.0 C=88



DETALHAMENTO ALVENARIA MURO DE ARRIMO
VISTA FRONTAL
ESCALA: 1/50

Blocos de concreto estrutural fck=4,5MPa, armados com Ø10mm por furo



DETALHAMENTO REVESTIMENTO MURO
VISTA FRONTAL
ESCALA: 1/50



PREFEITURA DE MURIAÉ
SECRETARIA MUNICIPAL DE OBRAS PÚBLICAS
MURO ARRIMO
PROJETO DE MURO DE ARRIMO

PREFEITURA DE MURIAÉ / CNPJ: 17.947.581/0001-76	VIGAS DO MURO DE ARRIMO 2
PREFEITO MARCOS GUARINO DE OLIVEIRA	
SECRETARIA MUNICIPAL DE OBRAS PÚBLICAS	Esquina da Alameda dos Ipês com Travessa das Espinheiras e Travessa das Murias- Bairro Primavera- MURIAÉ - MG
SECRETÁRIO JOSÉ FERES FILHO	ARQUIVO: Muro Primavera.dwg
R. T. PROJETO	DATA: 29/10/2022
ENG. ARLAN DOLGARMO MENDONÇA/CREA-MG Nº 177324-D	ESC. INDICADAS
	03/05