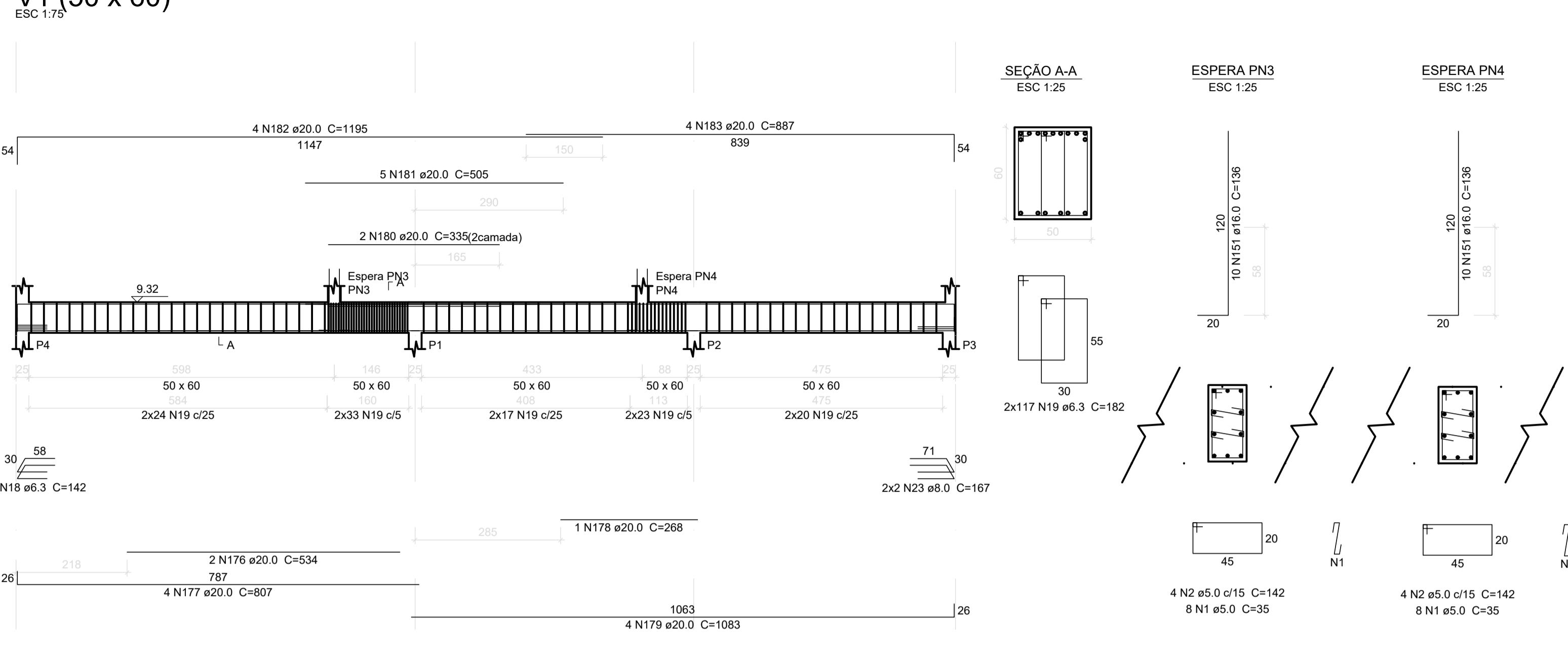
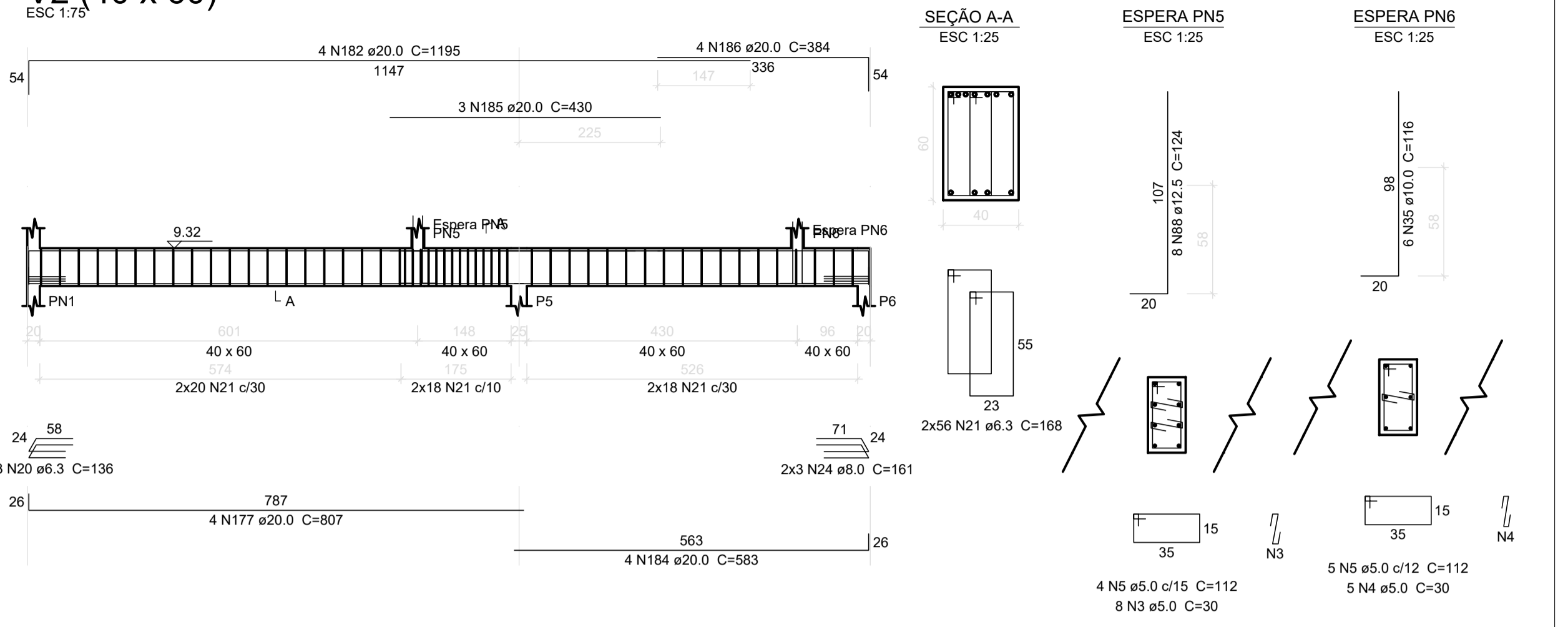


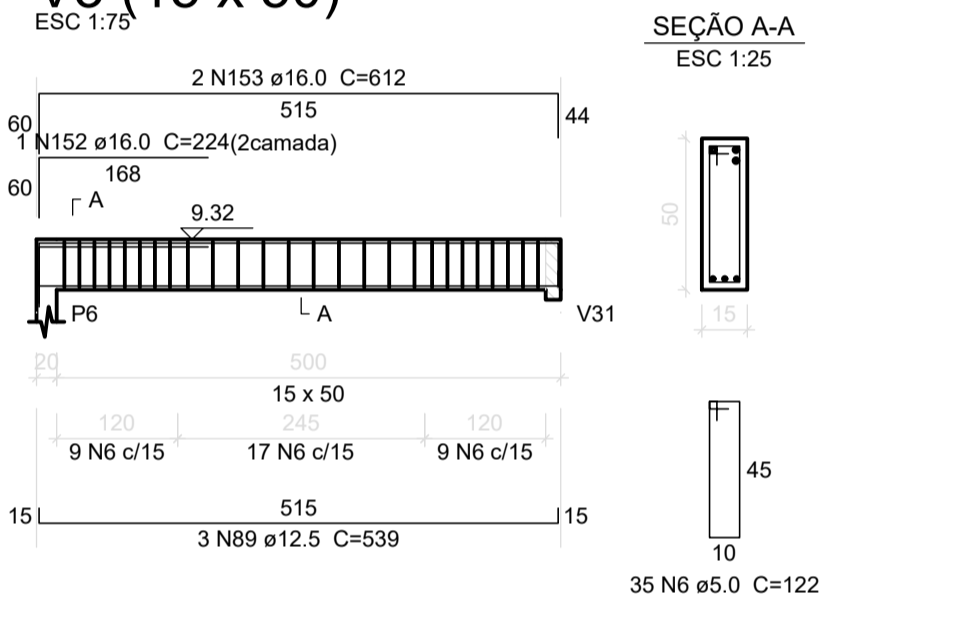
### V1 (50 x 60)



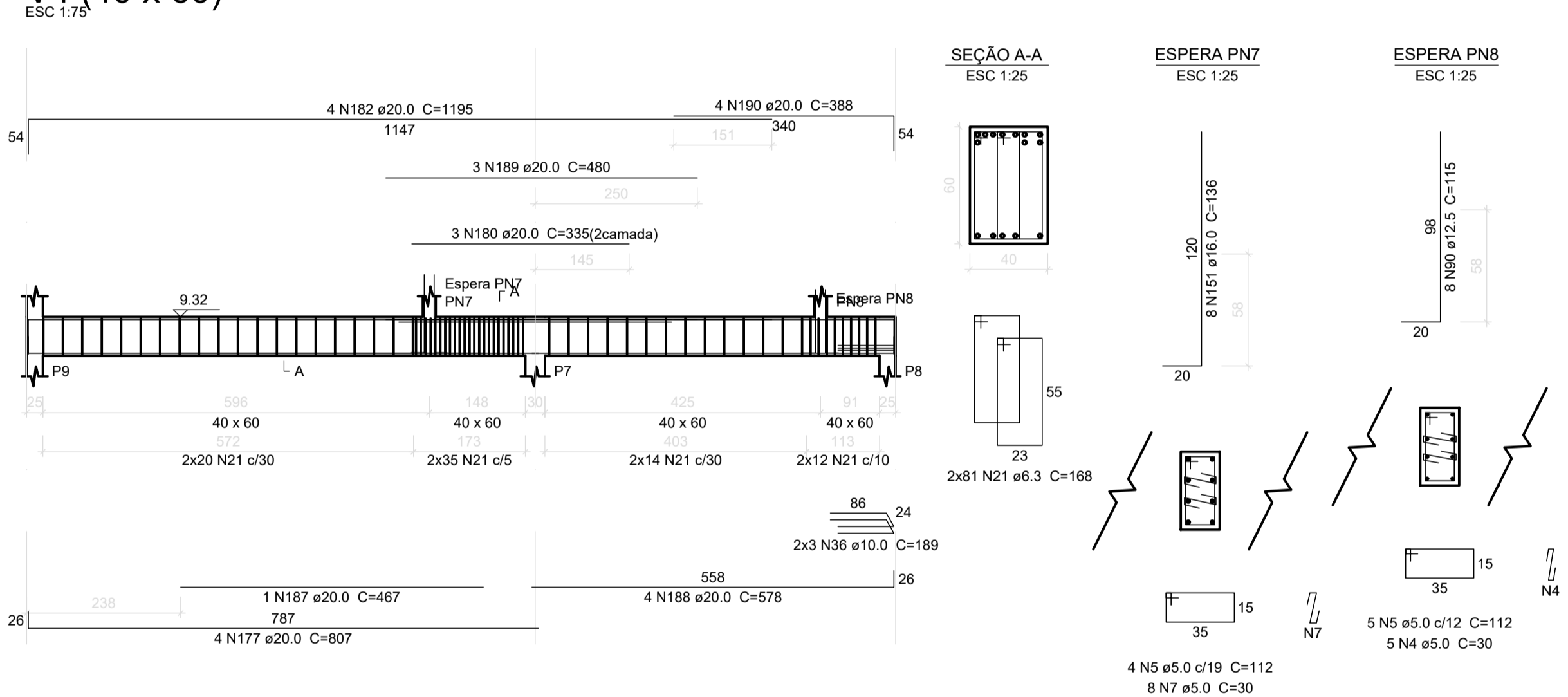
### V2 (40 x 60)



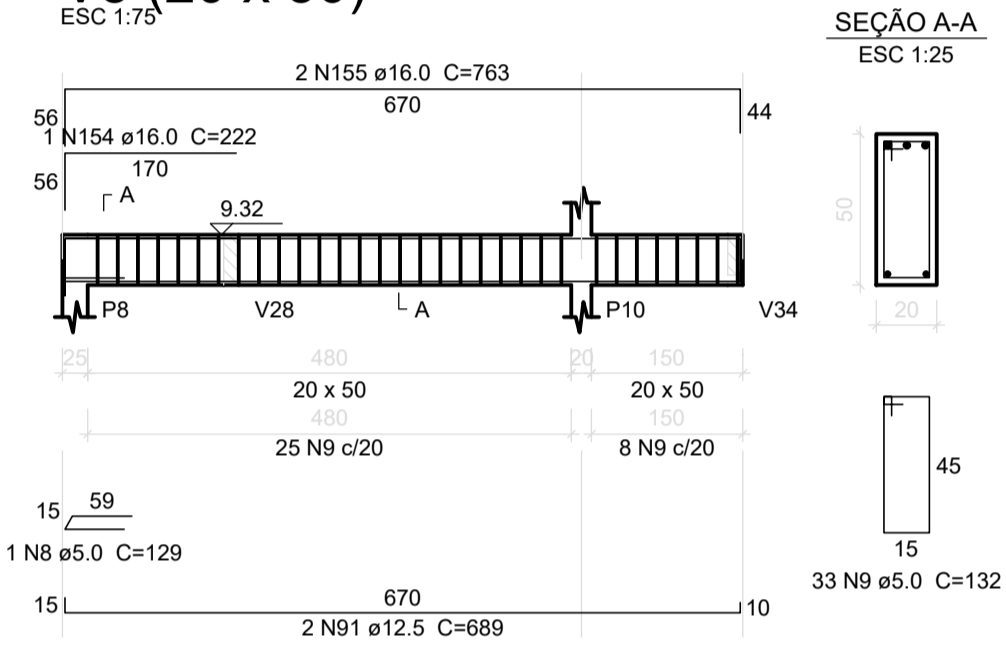
### V3 (15 x 50)



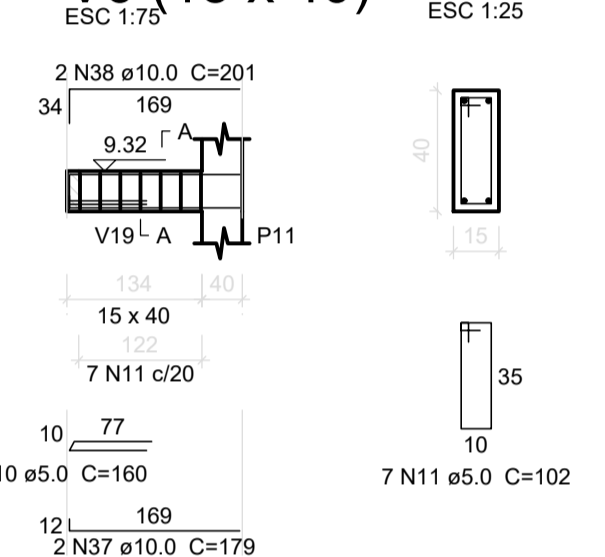
### V4 (40 x 60)



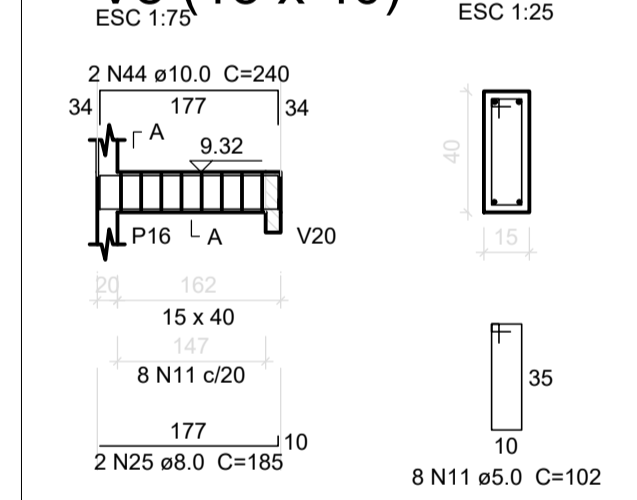
### V5 (20 x 50)



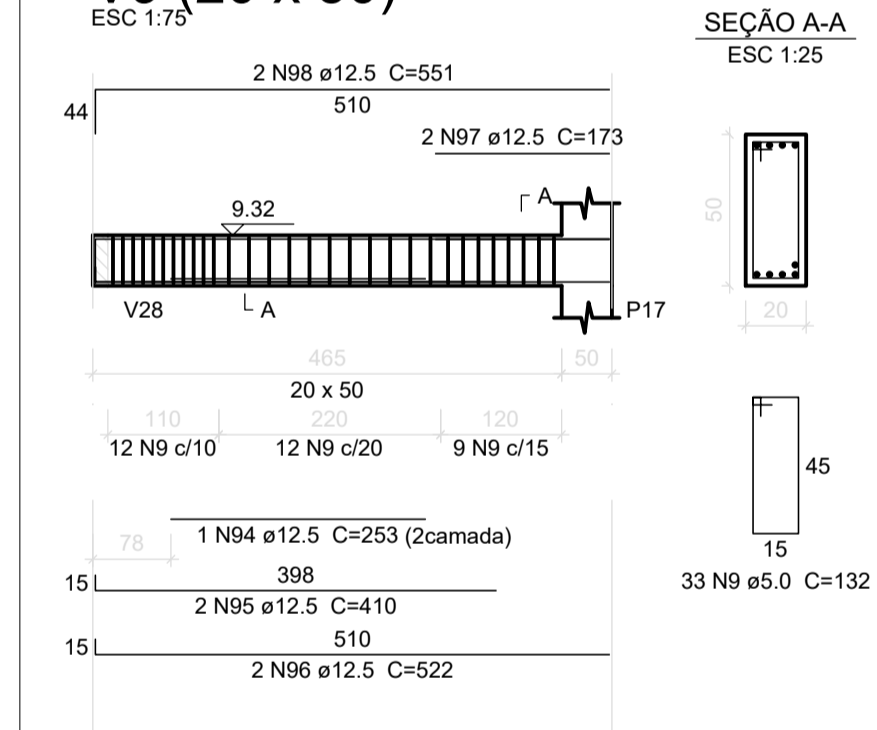
### V6 (15 x 40)



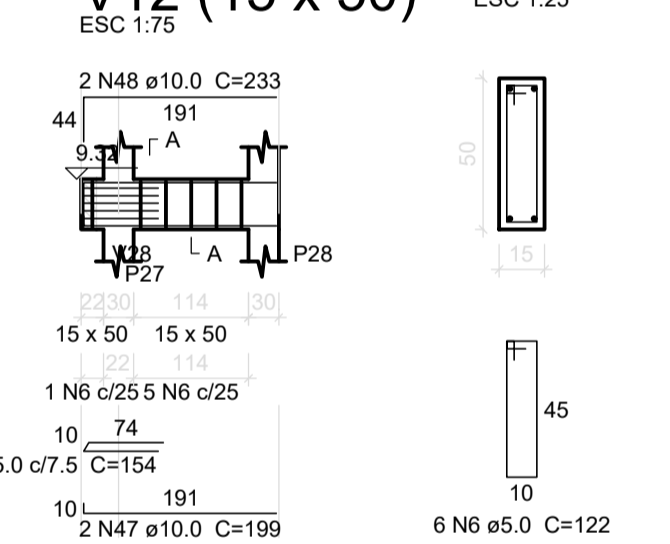
### V8 (15 x 40)



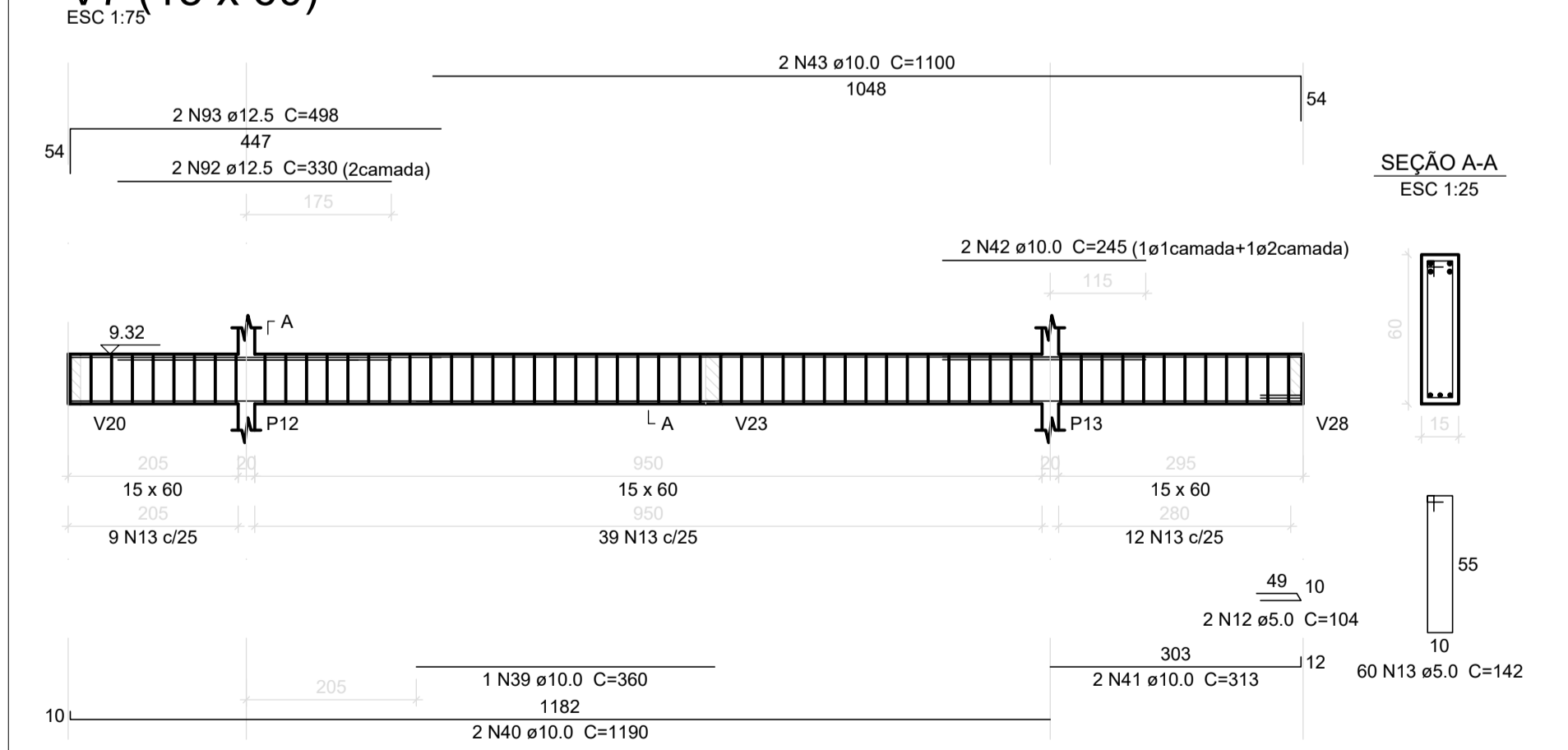
### V9 (20 x 50)



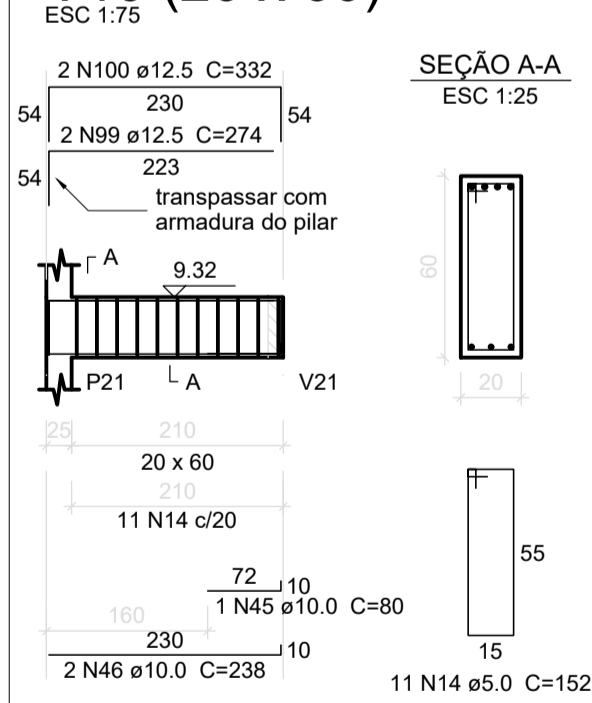
### V12 (15 x 50)



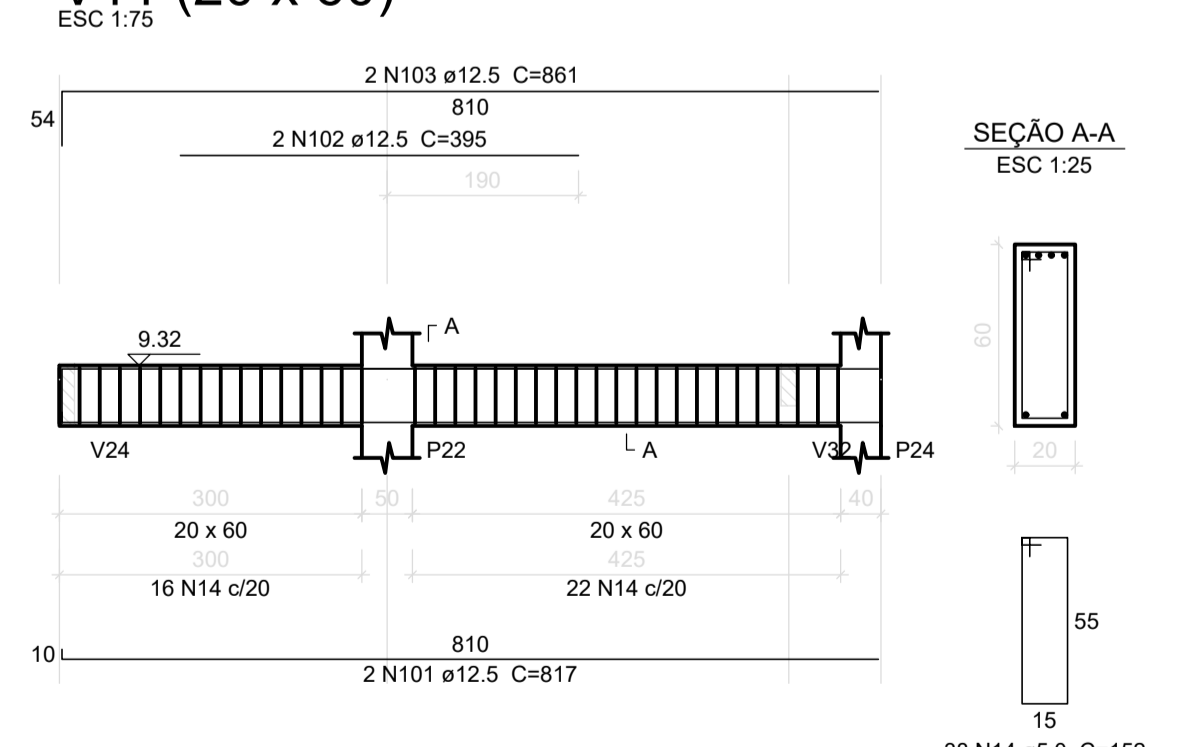
### V7 (15 x 60)



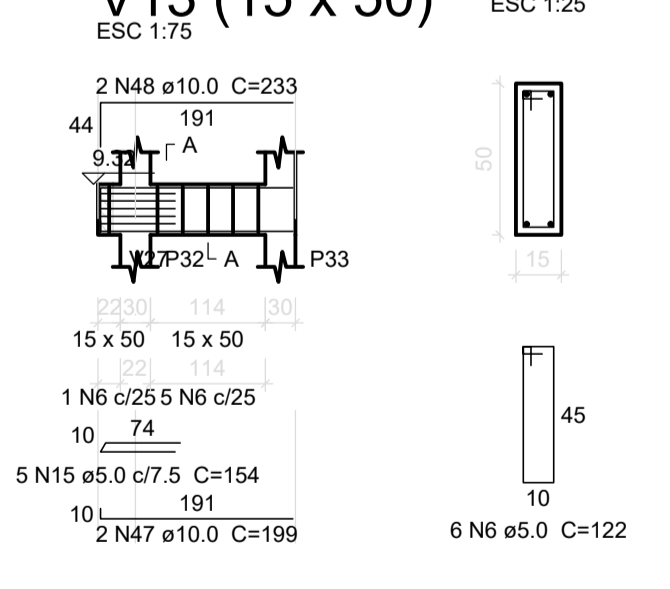
### V10 (20 x 60)



### V11 (20 x 60)



### V13 (15 x 50)



Relação do aço (REFERENTE ÀS PRANCHAS 23, 24 E 25 DAS VIGAS DO 3º PAV.)

AÇO	DIAM (mm)	C.TOTAL (m)	QUANT + 10 % (Barras)	PESO + 10 % (kg)
CA50	6.3	928.6	86	249.9
	8.0	114.1	11	49.5
	10.0	545.2	50	369.7
	12.5	744.2	69	788.6
	16.0	358.1	33	621.6
	20.0	483.7	45	1312.1
CA60	5.0	1977.4	182	335.3
<b>PESO TOTAL (kg)</b>				
CA50		3391.5		
CA60		335.3		
Volume de concreto (C-30) = 40.96 m³				
Área de forma = 462.09 m²				

## VIGAS DO 3º PAVIMENTO (01/03)

**NOTAS:**

REV.	T.E.	DESCRIÇÃO	PROJ	PROJ	VER.	APR.	AUT.	DATA
<b>REVISÕES</b>								
T.E.	(A) PRELIMINAR	(B) PARA APROVAÇÃO	(C) PARA CONHECIMENTO	(D) PARA COTAÇÃO	(E) PARA CONSTRUÇÃO	(F) CONFORME COMPRADO	(G) CONFORME CONSTRUÍDO	
<b>TIPO DE EMISSÃO</b>								
<b>APROVAÇÃO</b>			<b>ASSINATURA</b>			<b>DATA</b>		
RT	ASSINATURA		ASSINATURA		DATA			
PROJETISTA		HENRIQUE VITAL DO CARMO FREITAS		CREA/MG: 188562		JAN/2022		
SUPERVISOR		FABIOLA BATISTA PIRES		CREA/MG: 78.851/D		JAN/2022		
<b>CONEP CONSULTORIA</b>								
<b>PREFEITURA MUNICIPAL DE MURIAÉ SECRETARIA DE EDUCAÇÃO</b>								
<b>PROJETO ESTRUTURAL</b>								
<b>PROJETO EXECUTIVO</b>								
<b>BAIRRO INCONFIDÊNCIA</b>								
<b>ESCOLA MUNICIPAL PROF. ESMERALDA VIANNA</b>								
<b>VIGAS DO 3º PAVIMENTO (01/03)</b>								
REV:	Nº:	OS-04/2021					FOLHA	
00							23	