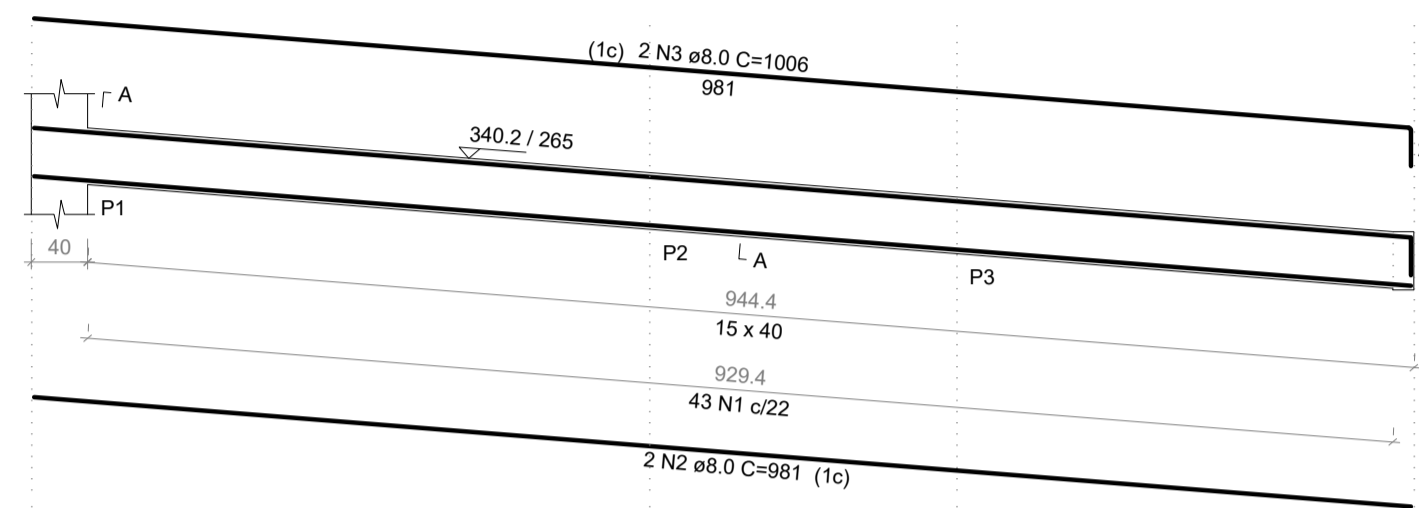
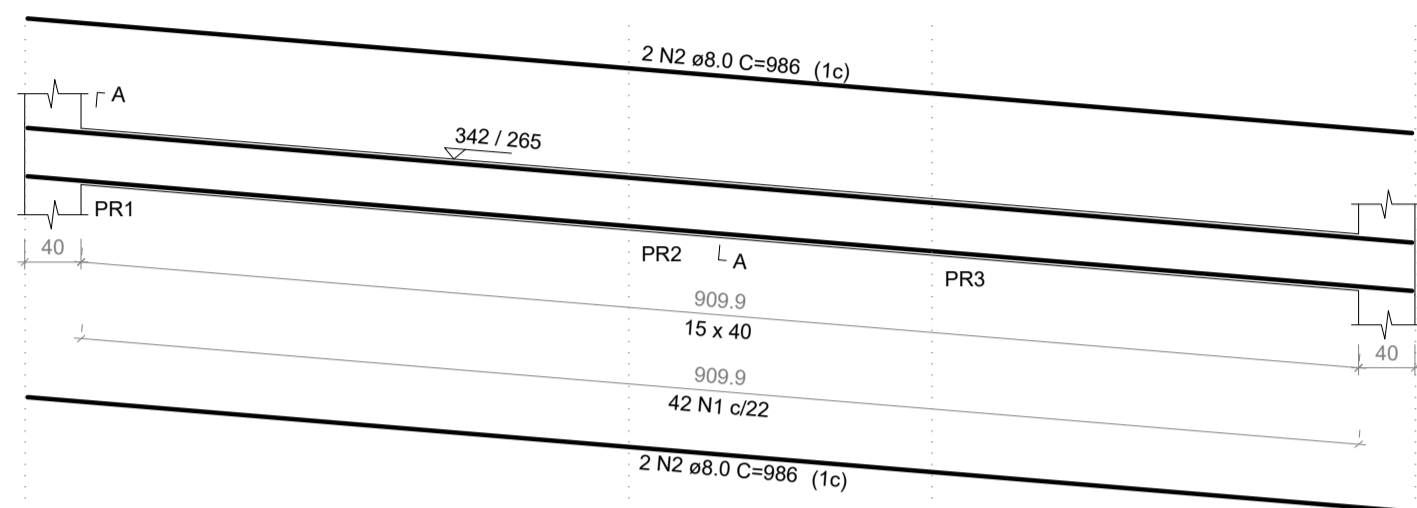


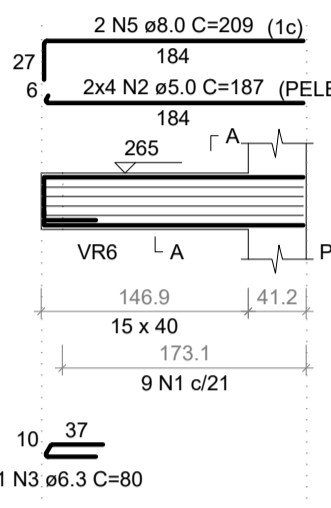
VR1
ESC 1:50



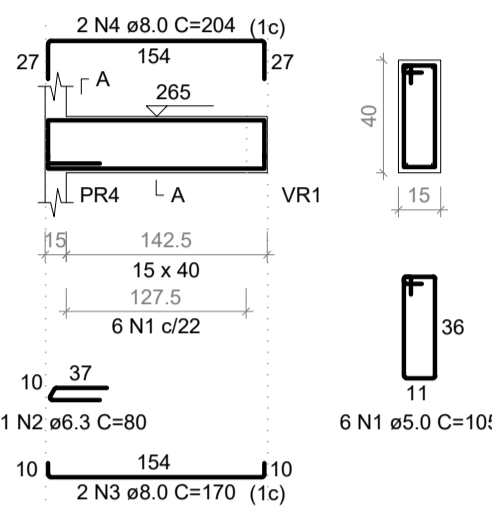
VR2
ESC 1:50



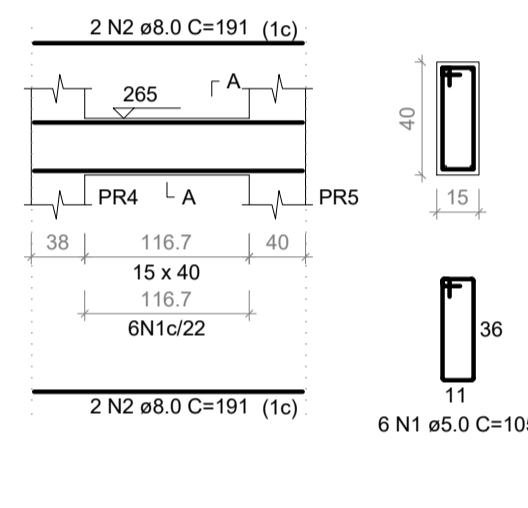
VR3
ESC 1:50



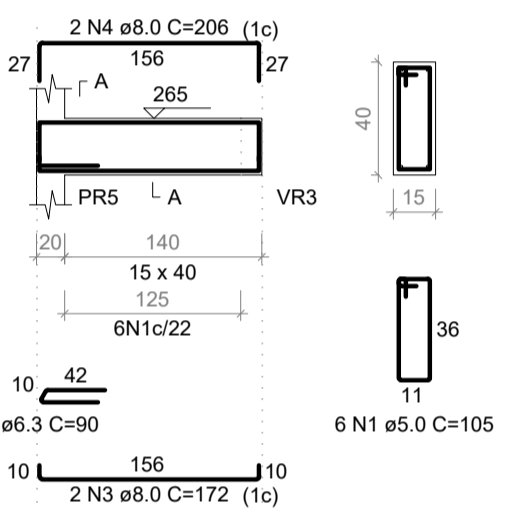
VR4
ESC 1:50



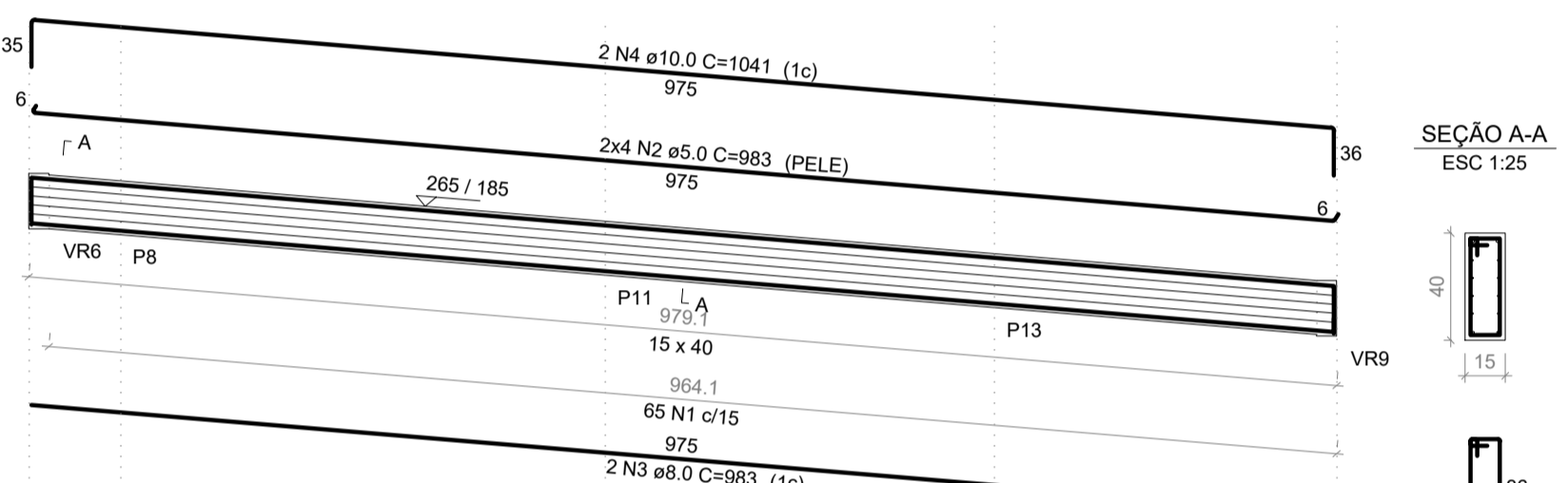
VR5
ESC 1:50



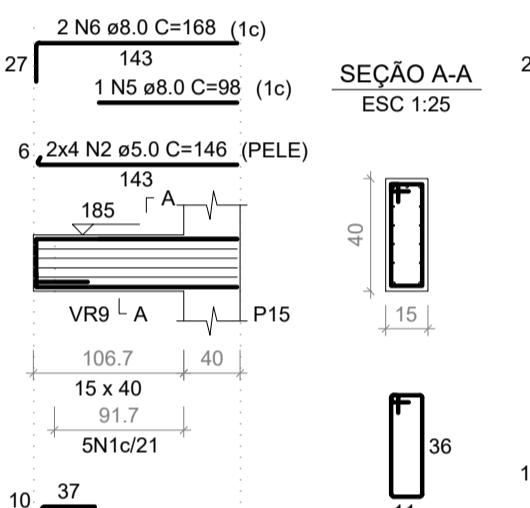
VR6
ESC 1:50



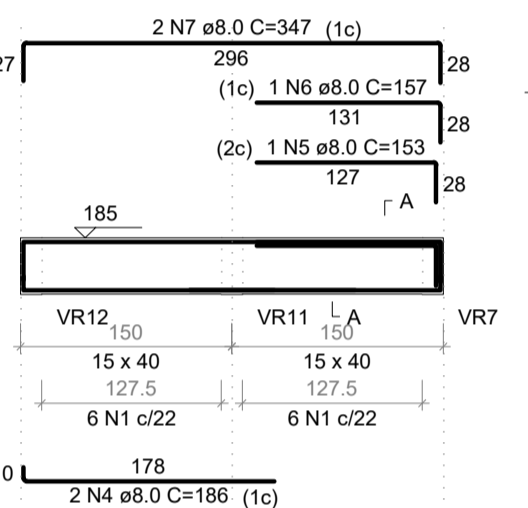
VR7
ESC 1:50



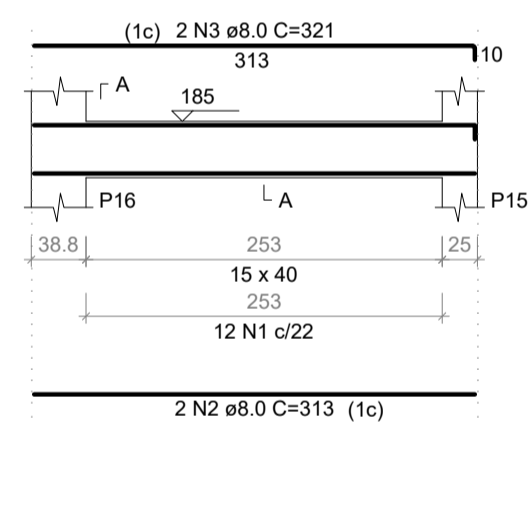
VR8
ESC 1:50



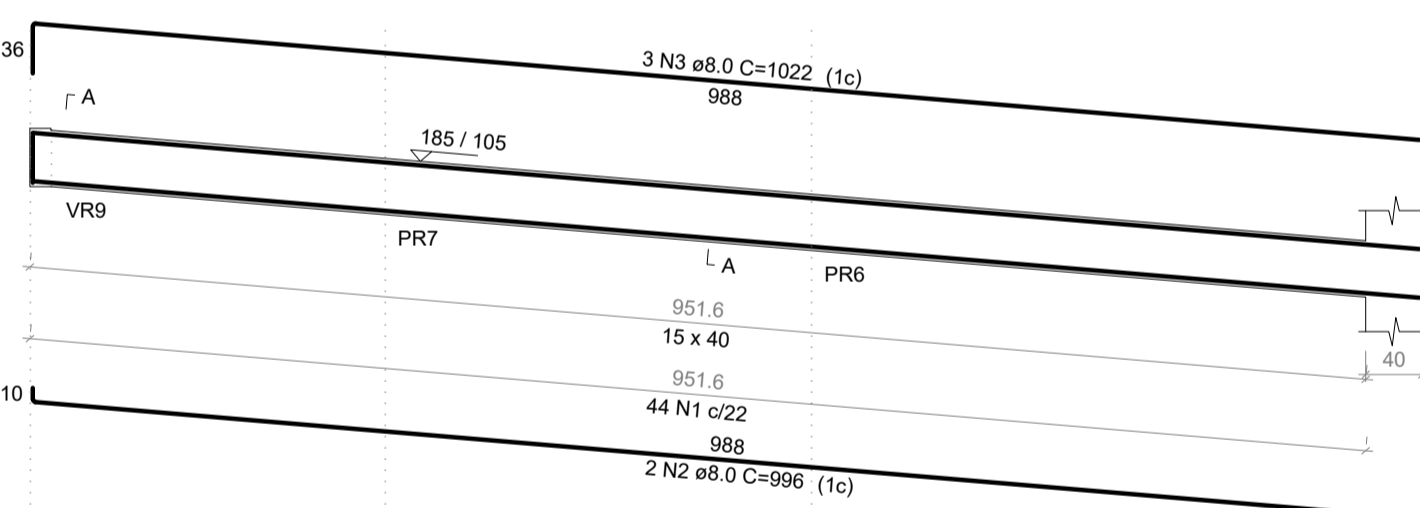
VR9
ESC 1:50



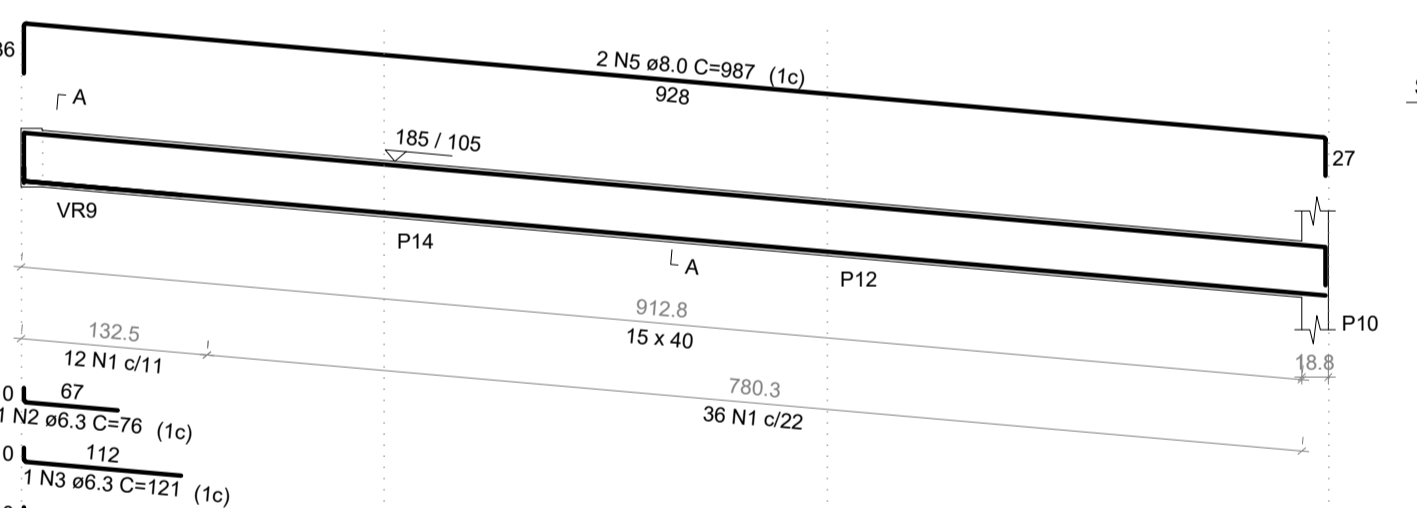
VR10
ESC 1:50



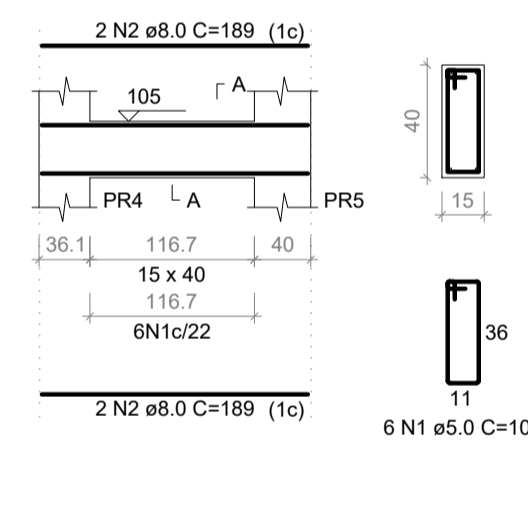
VR11
ESC 1:50



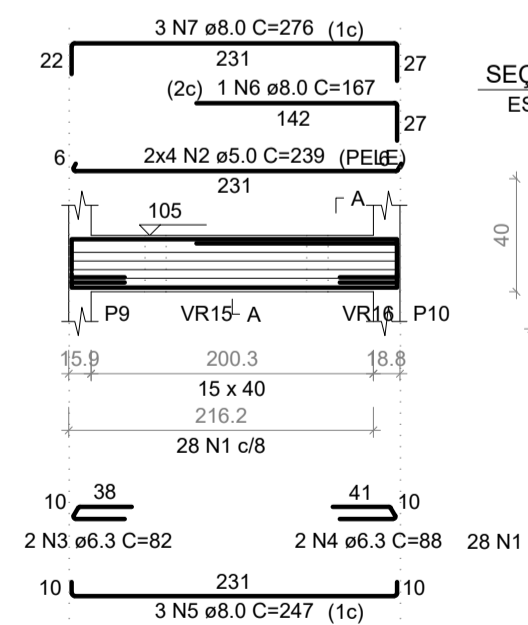
VR12
ESC 1:50



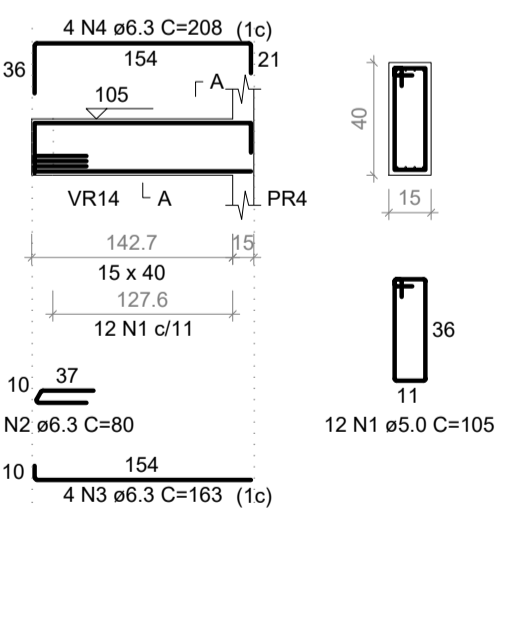
VR13
ESC 1:50



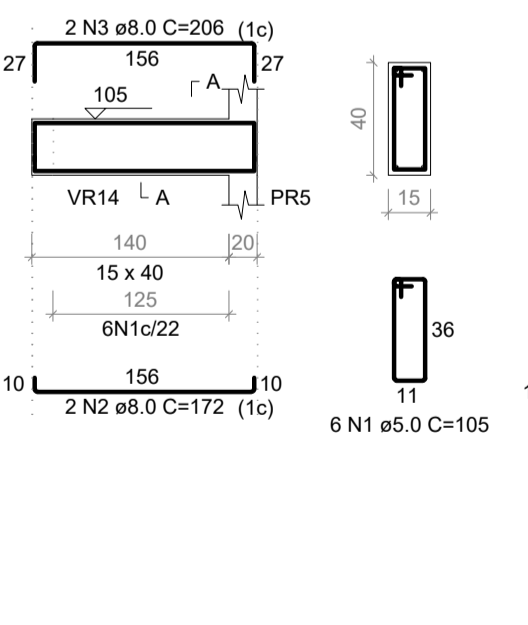
VR14
ESC 1:50



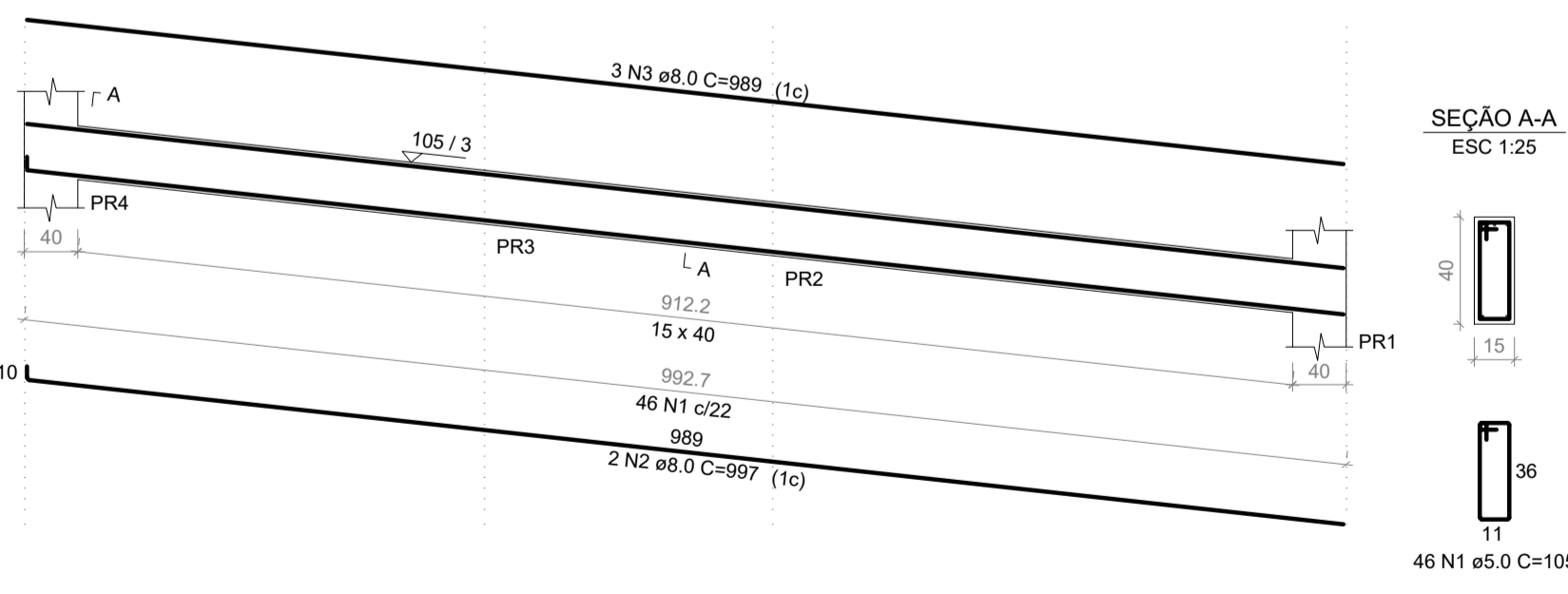
VR15
ESC 1:50



VR16
ESC 1:50



VR17
ESC 1:50



RELAÇÃO DO AÇO

ELEMENTO	AÇO	N	DIAM (mm)	QUANT	C.UNIT (cm)	C.TOTAL (cm)
VR1	CA60	1	5.0	43	105	4515
	CA50	2	8.0	2	981	1962
	CA50	3	8.0	3	1006	2012
VR2	CA60	1	5.0	42	105	4410
	CA50	2	8.0	4	986	3944
	CA60	1	5.0	9	105	945
VR3	CA60	2	5.0	8	187	1496
	CA50	3	6.3	1	80	80
	CA50	4	8.0	2	192	384
VR4	CA50	5	8.0	2	209	418
	CA60	1	5.0	6	105	630
	CA50	2	6.3	1	90	90
VR5	CA50	3	8.0	2	170	340
	CA50	4	8.0	2	204	408
	CA60	1	5.0	6	105	630
VR6	CA50	2	8.0	4	191	764
	CA60	1	5.0	6	105	630
	CA50	2	6.3	1	90	90
VR7	CA50	3	8.0	2	172	344
	CA50	4	8.0	2	206	412
	CA60	1	5.0	6	105	630
VR8	CA60	2	5.0	8	146	1168
	CA50	3	6.3	1	80	80
	CA50	4	8.0	2	151	302
VR9	CA50	5	8.0	1	98	98
	CA50	6	8.0	2	168	336
	CA60	1	5.0	12	105	1260
VR10	CA50	2	6.3	1	118	118
	CA50	3	6.3	3	187	561
	CA50	4	8.0	2	186	372
VR11	CA50	5	8.0	1	153	153
	CA50	6	8.0	1	157	157
	CA60	7	8.0	2	347	694
VR12	CA60	1	5.0	12	105	1260
	CA50	2	8.0	2	313	626
	CA50	3	8.0	2	321	642
VR13	CA60	1	5.0	44	105	4620
	CA50	2	8.0	2	996	1992
	CA60	3	8.0	3	1022	3066
VR14	CA60	1	5.0	48	105	5040
	CA50	2	6.3	1	76	76
	CA50	3	6.3	1	121	121
VR15	CA50	4	6.3	2	937	1874
	CA50	5	8.0	2	88	176
	CA50	6	8.0	3	247	741
VR16	CA50	7	8.0	3	276	828
	CA60	1	5.0	12	105	1260
	CA50	2	6.3	3	80	240
VR17	CA50	3	6.3	4	163	652
	CA50	4	6.3	4	208	832
	CA60	1	5.0	6	105	630
VR18	CA50	2	8.0	2	172	344
	CA50	3	8.0	2	206	412
	CA60	1	5.0	46	105	4830
VR19	CA50	2	8.0	2	997	1994
	CA50	3	8.0	3	989	2967

RESUMO DO AÇO

AÇO	DIAM (mm)	C.TOTAL (m)	PESO + 16% (kg)
CA50	6.3	51.4	13.8
CA50	8.0	315.8	137
CA60	10.0	20.8	14.1
CA60	5.0	540.2	91.6
PESO TOTAL (kg)			
CA50	165		
CA60	91.6		

Volume de concreto (C-25) = 4.83 m³
Área de forma = 76.54 m²



PREFEITURA MUNICIPAL DE MURIAÉ
SECRETARIA MUNICIPAL DE OBRAS PÚBLICAS

PROJETO ESTRUTURAL

PROJETO DE VIGAS DO TERREO DA RAMPA

PREFEITURA DE MURIAÉ - CNPJ: 17.947.581/0001-76	DESCRIÇÃO:
MARCOS GUARINO DE OLIVEIRA SECRETARIO DE OBRAS PÚBLICAS:	PROJETO ESTRUTURAL PARA CONSTRUÇÃO DE UMA UBS NO BARRIO INCONFIDENCIA
JORGE FERES FILHO	LOCAL: RUA CLAUDIO MANOEL DA COSTA,ESQUINA COM A RUA ALVARENGA PEIXOTO -B.INCONFIDENCIA -MURIAÉ -MG
R. T. PROJETO:	ARQUIVO: PROJ.ESTRUTURAL.B.INCONFIDENCIA-RAMPA.DWG
ARLAN DO CARMO MENDONÇA ENEP CIVIL - CREA/MG: 17334/D	ESC. INDICADAS
	FOLHA: