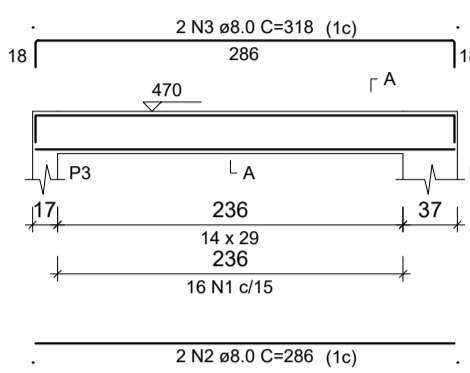
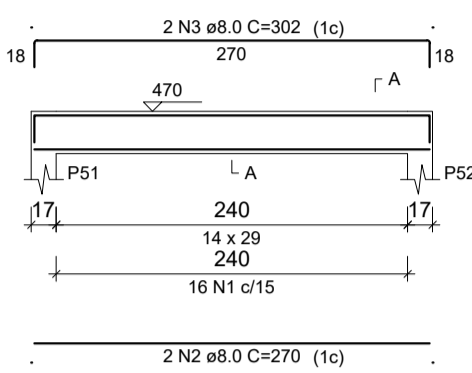


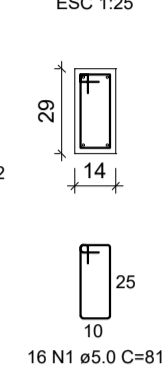
VS1
ESC 1:50



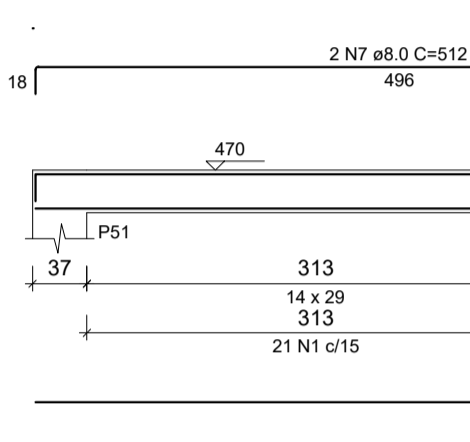
VS2
ESC 1:50



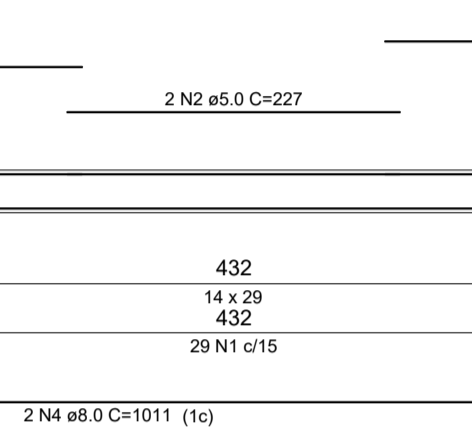
SEÇÃO A-A
ESC 1:25



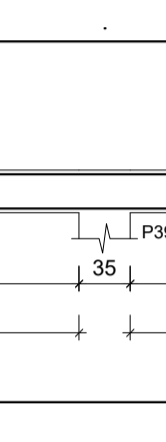
VS3
ESC 1:50



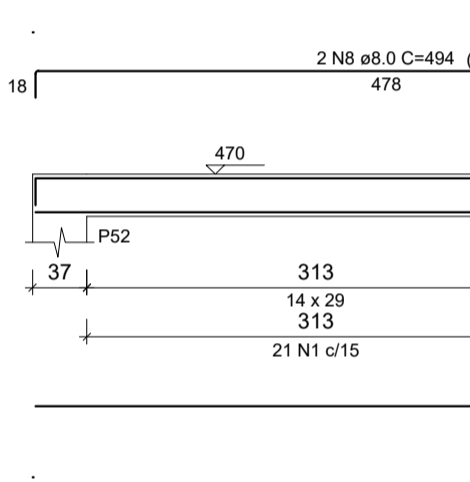
VS4
ESC 1:50



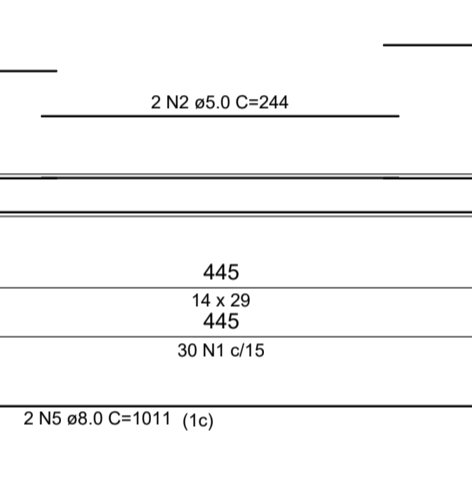
SEÇÃO A-A
ESC 1:25



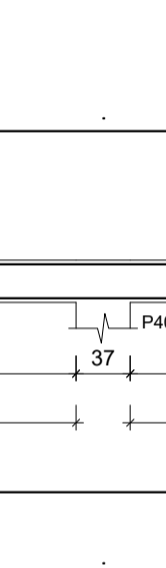
VS4
ESC 1:50



VS4
ESC 1:50



SEÇÃO A-A
ESC 1:25



RELAÇÃO DO AÇO

ELEMENTO	AÇO	N	DIAM (mm)	QUANT	C.UNIT (cm)	C.TOTAL (cm)
VS1	CA60	1	5.0	16	81	1296
	CA50	2	8.0	2	286	572
	CA50	3	8.0	2	318	636
VS2	CA60	1	5.0	16	81	1296
	CA50	2	8.0	2	270	540
	CA50	3	8.0	2	302	604
VS3	CA60	1	5.0	184	81	14904
	CA60	2	5.0	2	227	454
	CA60	3	5.0	2	227	454
	CA50	4	8.0	2	1011	2022
	CA50	5	8.0	2	911	1822
	CA50	6	8.0	2	1180	2360
	CA50	7	8.0	2	512	1024
	CA50	8	8.0	2	827	1654
	CA50	9	8.0	2	1200	2400
	CA50	10	8.0	2	178	356
VS4	CA60	1	5.0	187	81	15147
	CA60	2	5.0	2	244	488
	CA60	3	5.0	2	245	490
	CA60	4	5.0	2	287	574
	CA50	5	8.0	2	1011	2022
	CA50	6	8.0	2	920	1840
	CA50	7	8.0	2	1178	2356
	CA50	8	8.0	2	494	988
	CA50	9	8.0	2	817	1634
	CA50	10	8.0	2	667	1334
	CA50	11	8.0	2	403	806

RESUMO DO AÇO

AÇO	DIAM (mm)	C.TOTAL (m)	PESO + 10% (kg)
CA50	8.0	249.7	108.4
CA60	5.0	351	59.5
PESO TOTAL (kg)			167.9
CA50	108.4		
CA60	59.5		

Volume de concreto (C-25) = 2.72 m³
Área de forma = 48.21 m²



PREFEITURA MUNICIPAL DE MURIAÉ
SECRETARIA MUNICIPAL DE OBRAS PÚBLICAS

PROJETO ESTRUTURAL CRECHE BOM PASTOR

PROJETO DAS VIGAS SUPERIORES

<p>PREFEITURA DE MURIAÉ / CNPJ: 17.947.581/0001-76</p> <p>PREFEITO IOANNIS KONSTANTINOS GRAMMATIKOPOULOS</p> <p>SECRETARIA DE OBRAS PÚBLICAS:</p> <p style="text-align: center;">CARLOS MAGNO DE OLIVEIRA</p> <p>R. T. PROJETO:</p> <p style="text-align: right;">LEONARDO DA SILVA CREA RJ 2017103206/D</p>	<p>DESCRIÇÃO:</p> <p>PROJETO ESTRUTURAL PARA CONSTRUÇÃO DE UMA CRECHE NO DISTRITO BOM PASTOR DE MURIAÉ-MG</p> <p>LOCAL:</p> <p>RUA ABÍLIO JOSÉ FRITZ - DISTRITO DO BOM PASTOR - MURIAÉ - MG</p> <p>ARQUIVO: Projeto vigas superiores.DWG</p> <p>ESC. INDICADAS</p> <p>DATA: ABRIL / 2020</p>
--	--

FOLHA: **22/22**