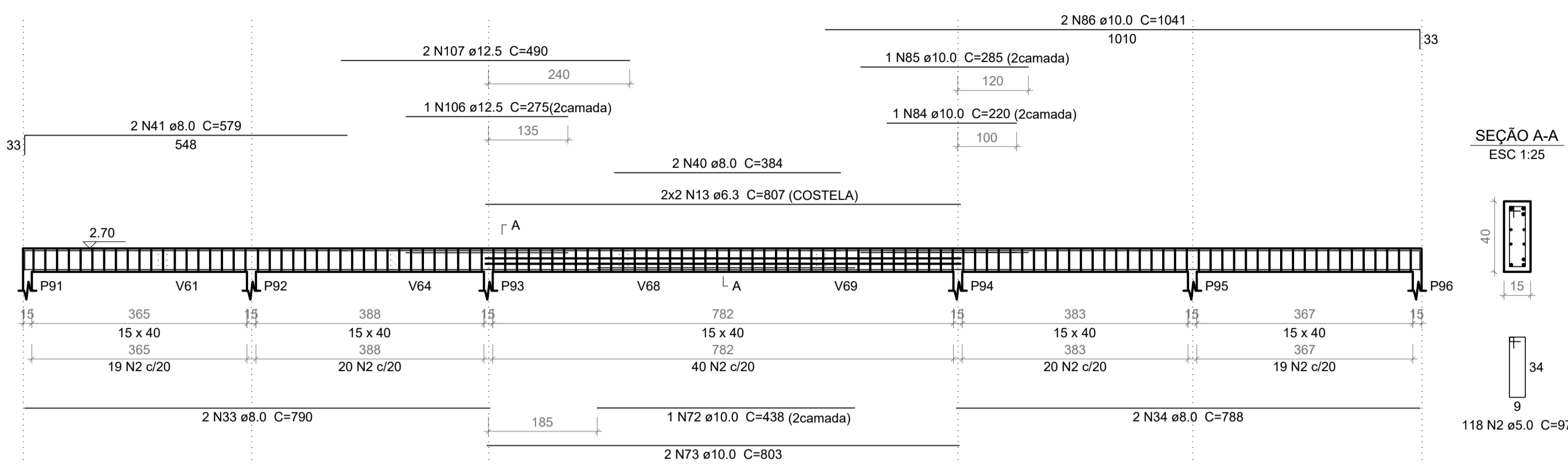
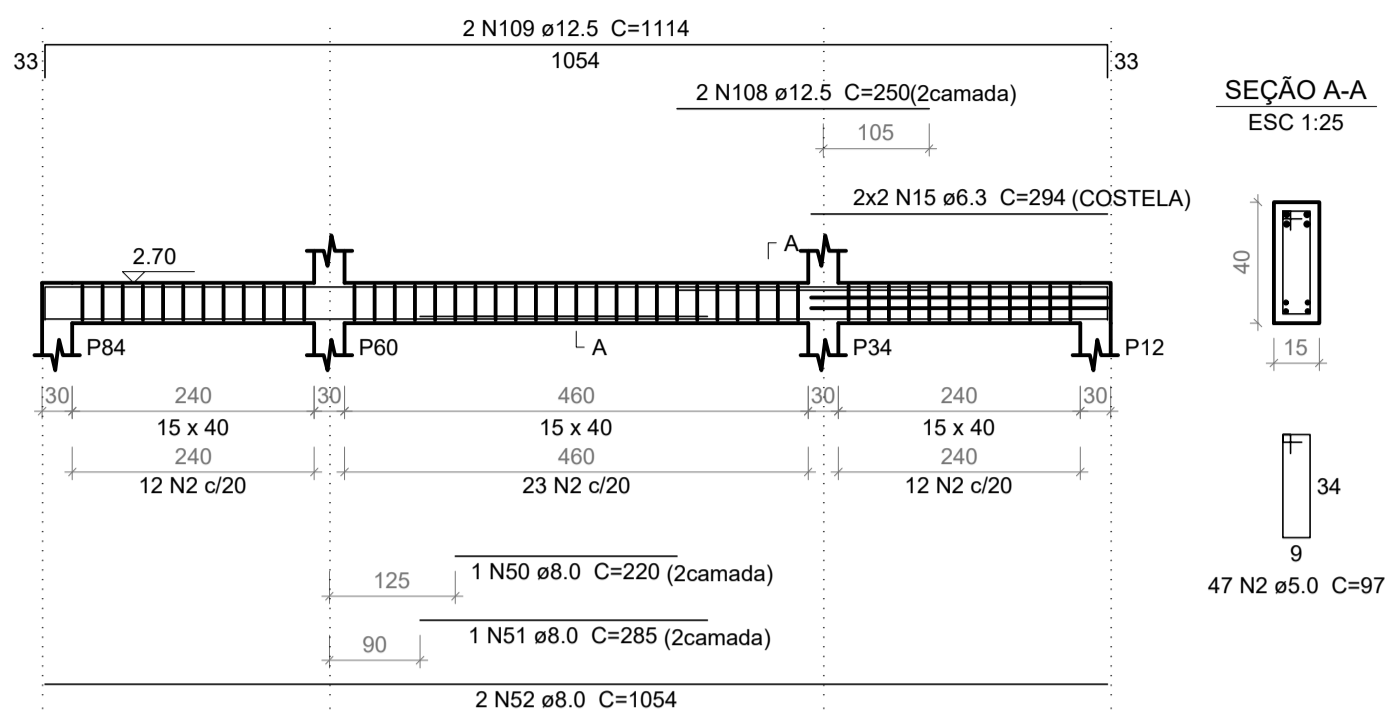


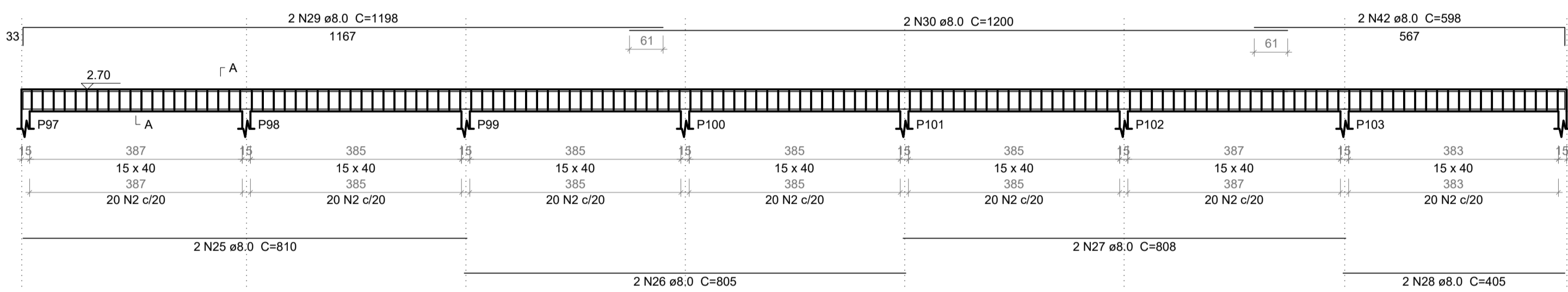
### V24 (15 x 40)



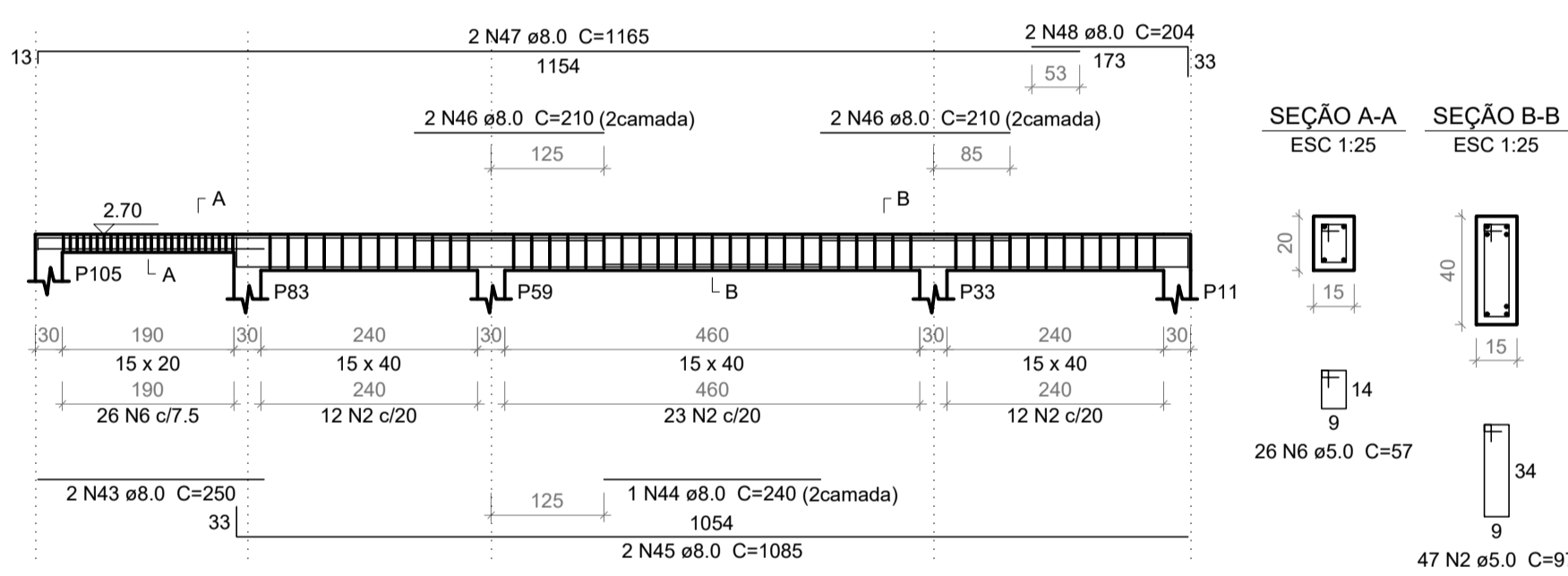
### V40 (15 x 40)



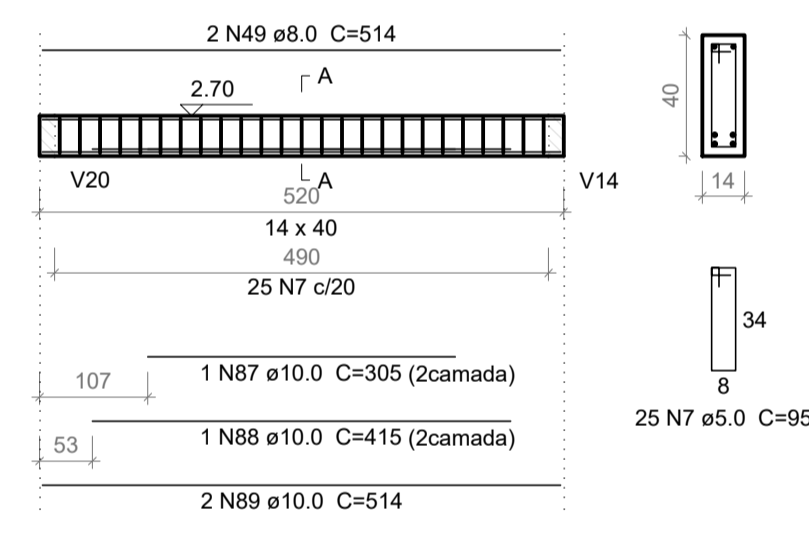
### V25 (15 x 40)



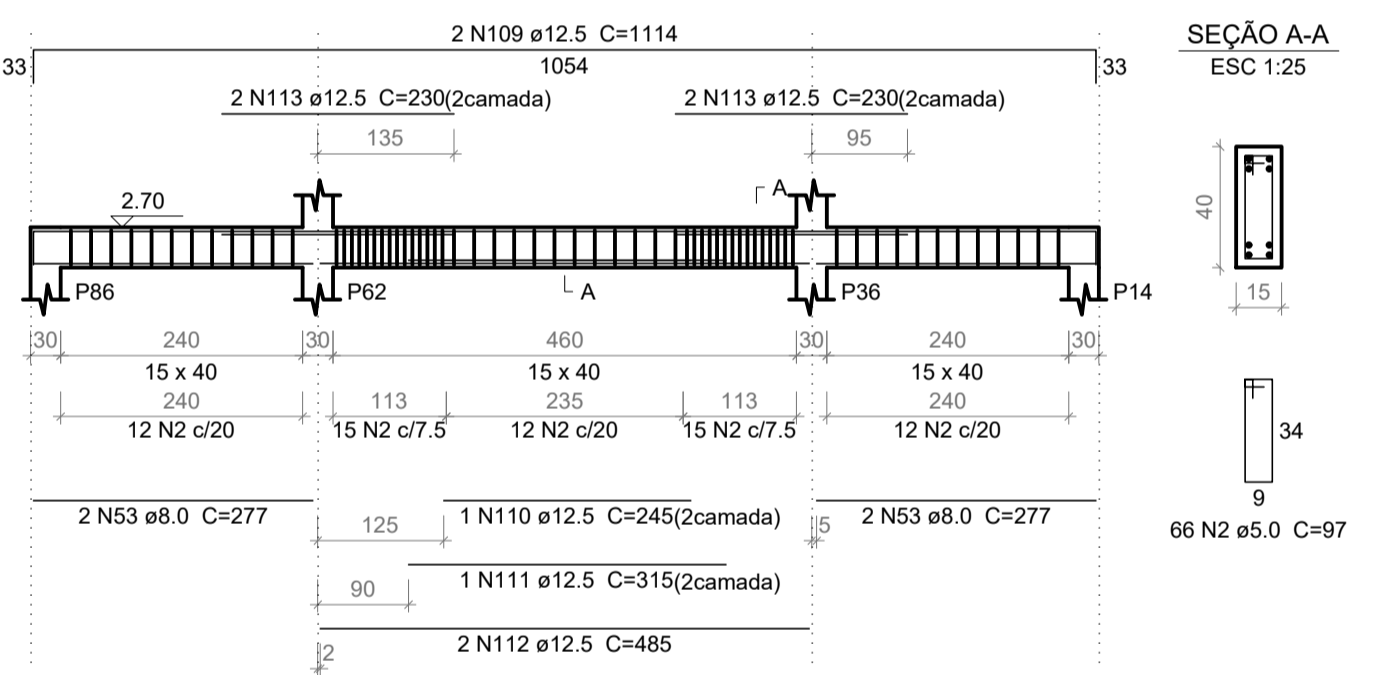
### V36 (var)



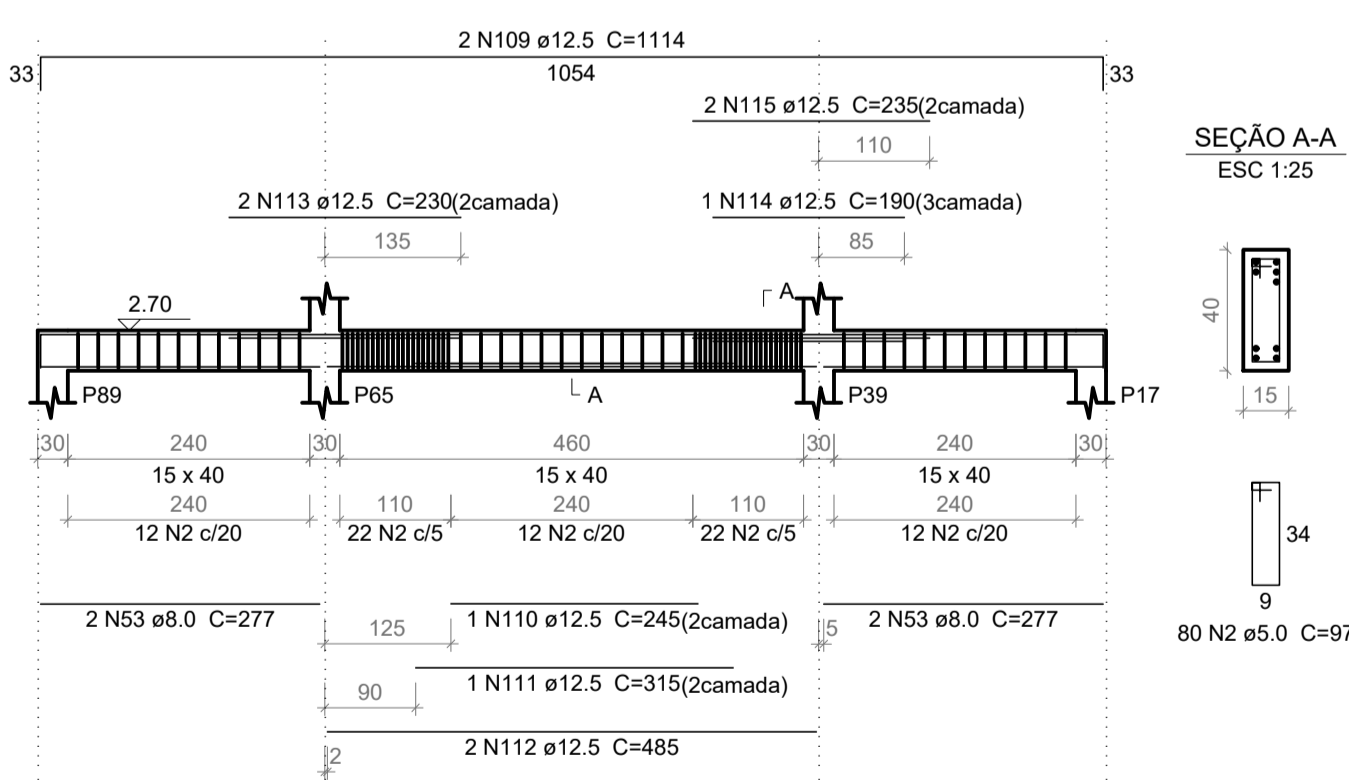
### V38 (14 x 40)



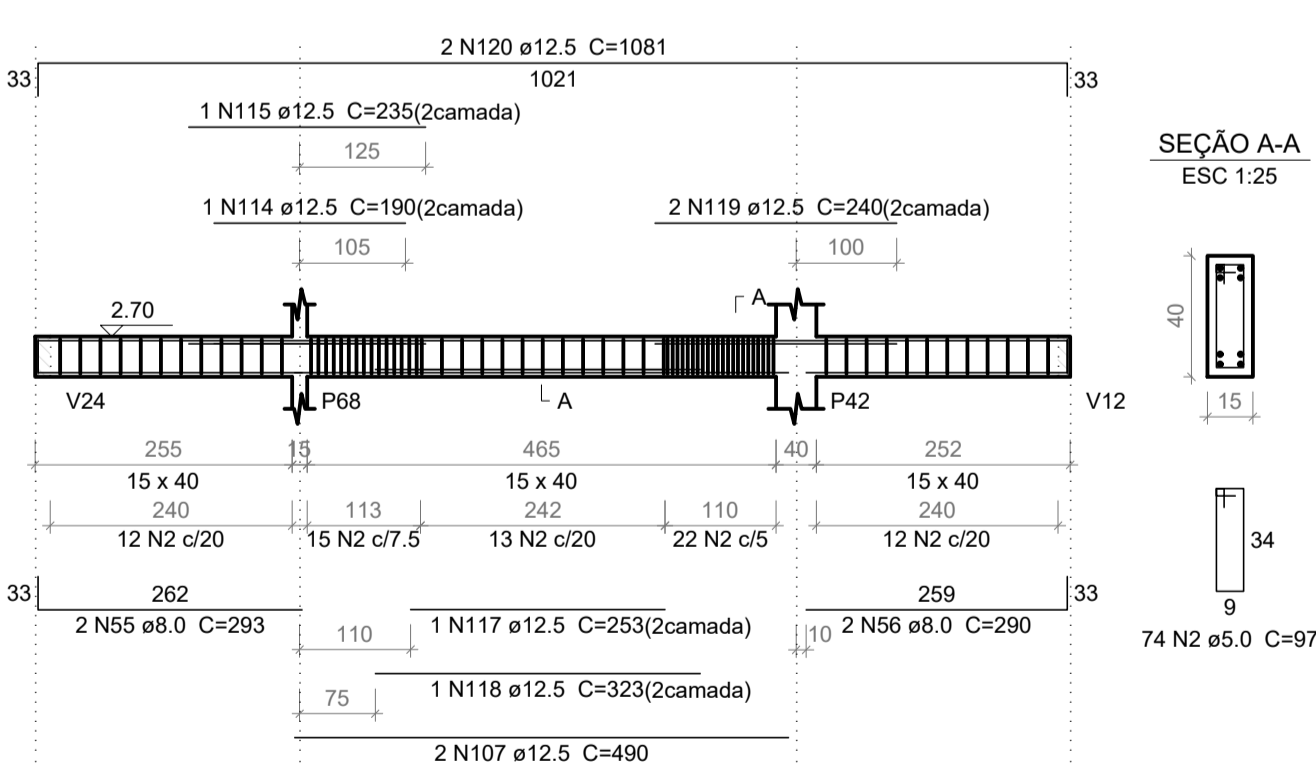
### V43=V46=V49=V52=V84=V87=V90=V93 (15 x 40)



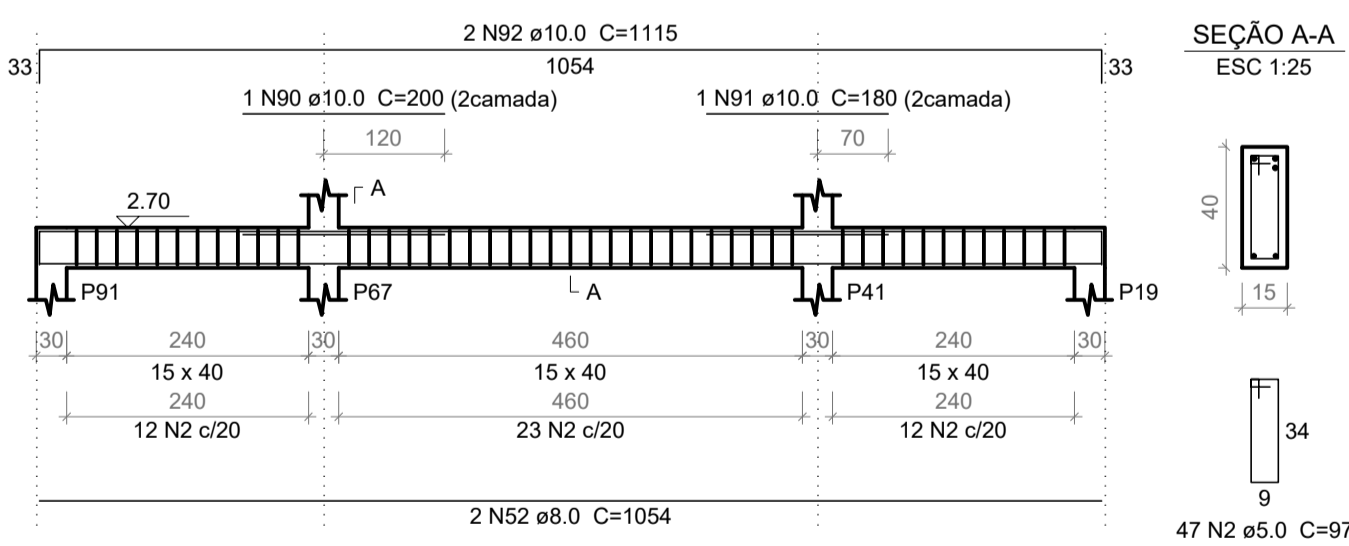
### V55 (15 x 40)



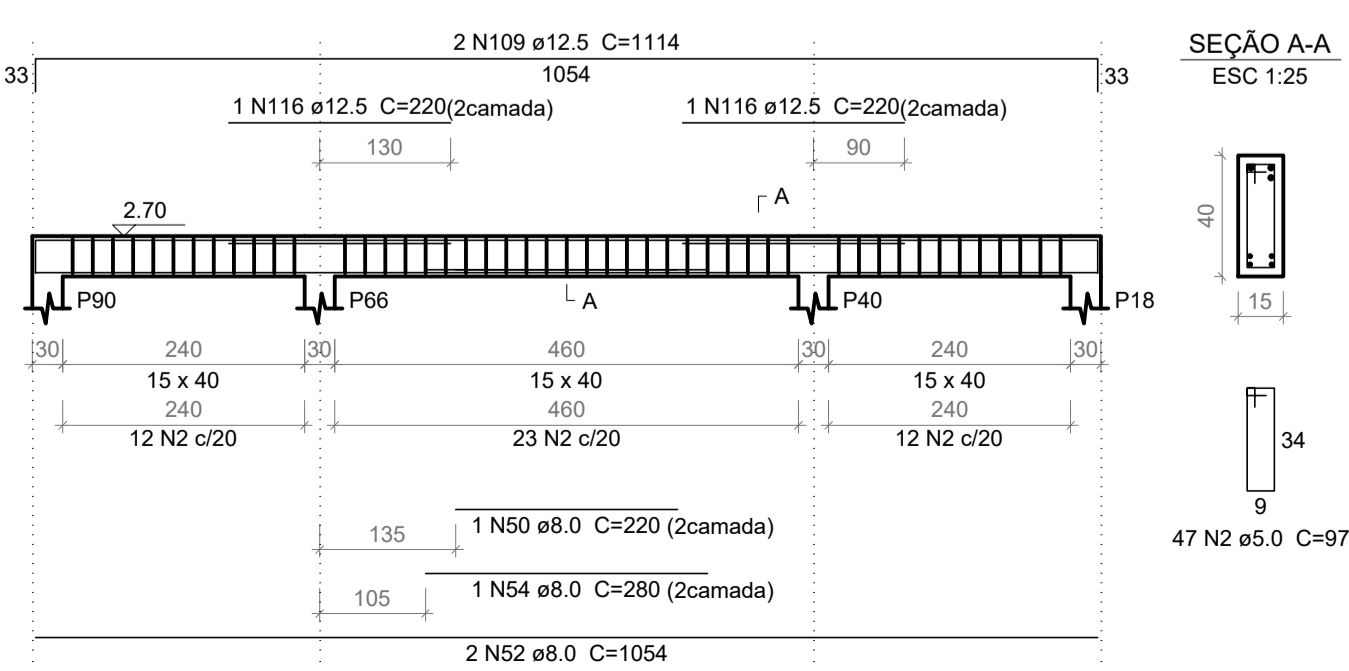
### V61 (15 x 40)



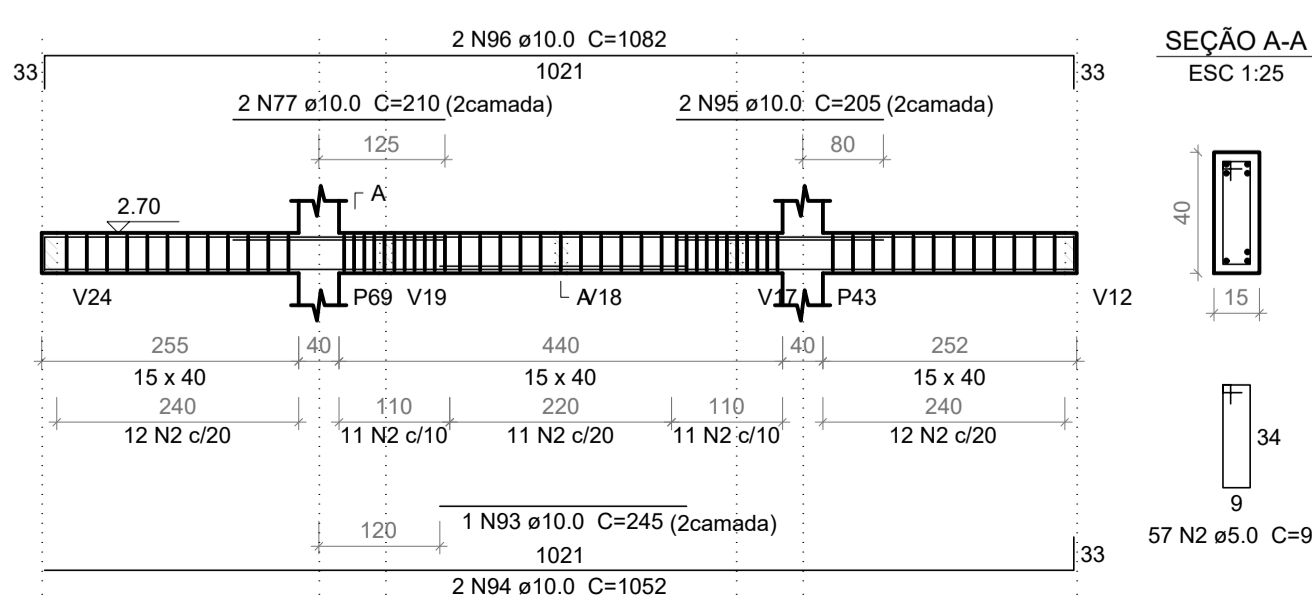
### V58 (15 x 40)



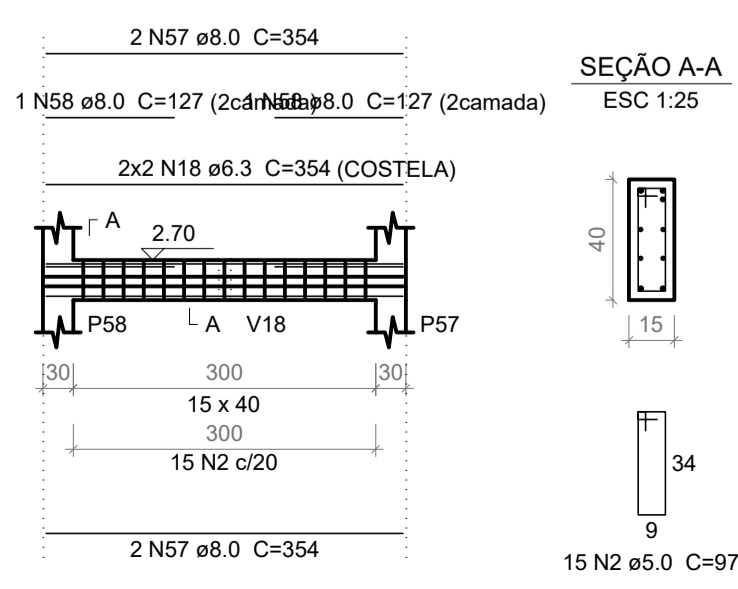
### V59 (15 x 40)



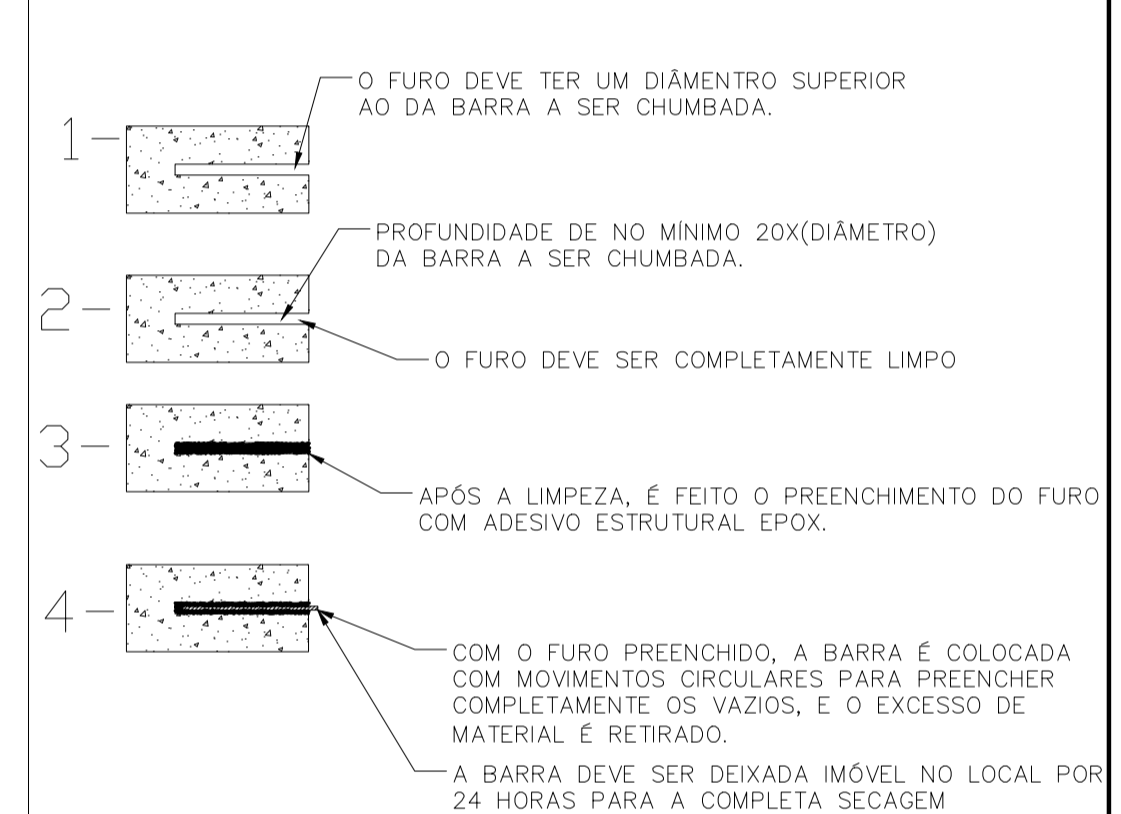
### V64 (15 x 40)



### V66 (15 x 40)



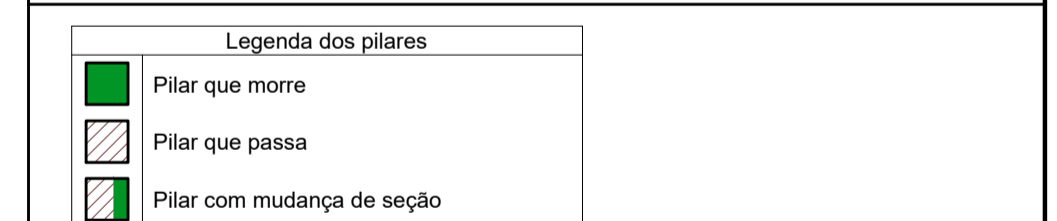
#### PROCEDIMENTO PARA FIXAÇÃO DA ESTRUTURA NOVA NA EXISTENTE



#### NOTAS:

- (A) RE - PILARES PRE MOLDADOS EXISTENTES
  - (B) AS VIGAS QUE SE APOIAM NOS PRE DEVEM SER ANCORADAS COM SIKADUR
  - (C) PILARES SEM SAPATAS DEVEM SER ANCORADOS NO RADER EXISTENTE COM SIKADUR
  - (D) REBATO DO PLATEFORMA = 10 CM
  - (E) VERIFICAR MEDIDAS DO PLATEFORMA COM O FABRICANTES ANTES DA EXECUÇÃO DA CAIXA.
- | Características dos materiais |           |
|-------------------------------|-----------|
| Elemento                      | fck (MPa) |
| Vigas e lajes                 | 25        |
| Pilares                       | 25        |
| Sapatas                       | 25        |

#### LEGENDA:



REV.	T.E.	DESCRIÇÃO	PROJ.	PROJ.	VER.	APR.	AUT.	DATA
REVISÕES								

T.E. TIPO DE EMISSÃO	(A) PRELIMINAR	(B) PARA APROVAÇÃO	(C) PARA CONHECIMENTO	(D) PARA COTAÇÃO	(E) PARA CONSTRUÇÃO	(F) CONFORME COMPRADO	(G) CONFORME CONSTRUÍDO	(H) CANCELADO
APROVAÇÃO	ASSINATURA						DATA	
RT	ASSINATURA							
	NOME	HENRIQUE VITAL DO CARMO FREITAS	CREA/MG:	188562				SET/2022
	PROJETISTA							
	SUPERVISOR	FABIOLA BATISTA PIRES	CREA/MG:	78.851/D				SET/2022

**CONEPPI CONSULTORIA** PREFEITURA MUNICIPAL DE MURIAÉ SECRETARIA DE OBRAS

**PROJETO ESTRUTURAL**

**PROJETO EXECUTIVO**

REFORMA, ADQUAÇÃO E APLIAÇÃO DO MERCADO DO PRODUTOR MUNICIPAL

RUA SINVAL FLORENCIO DA SILVA, BAIRRO CENTRO

ARMAÇÃO DAS VIGAS DA 1ª LAJE (02-05)

ESCALA INDICADA

REV.: Nº: OS-36/2022

FOLHA 10 DE 13