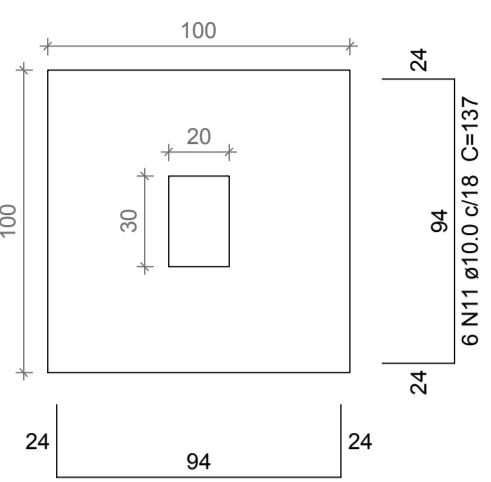
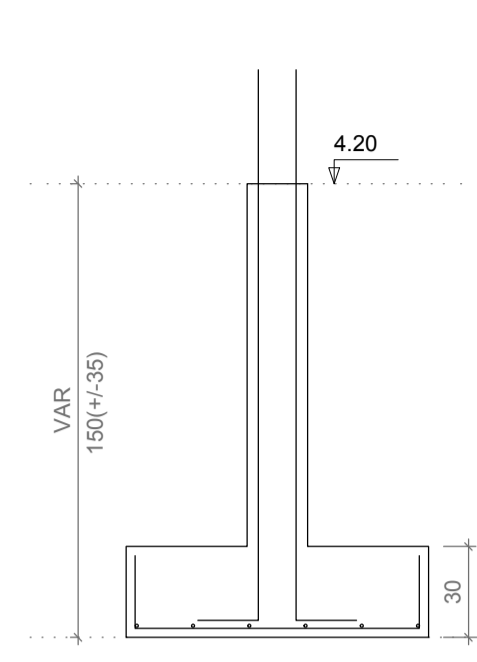


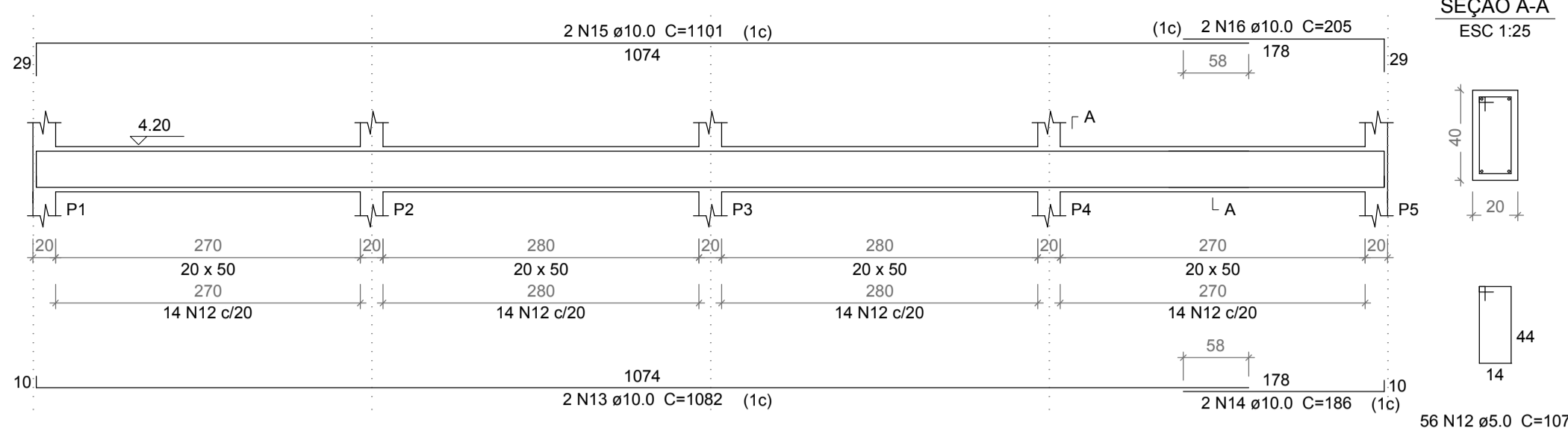
S1=S2=S3=S4=S5=P11=P12
PLANTA
ESC 1:25



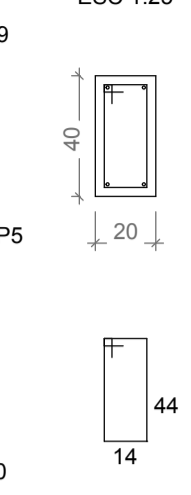
CORTE
ESC 1:25



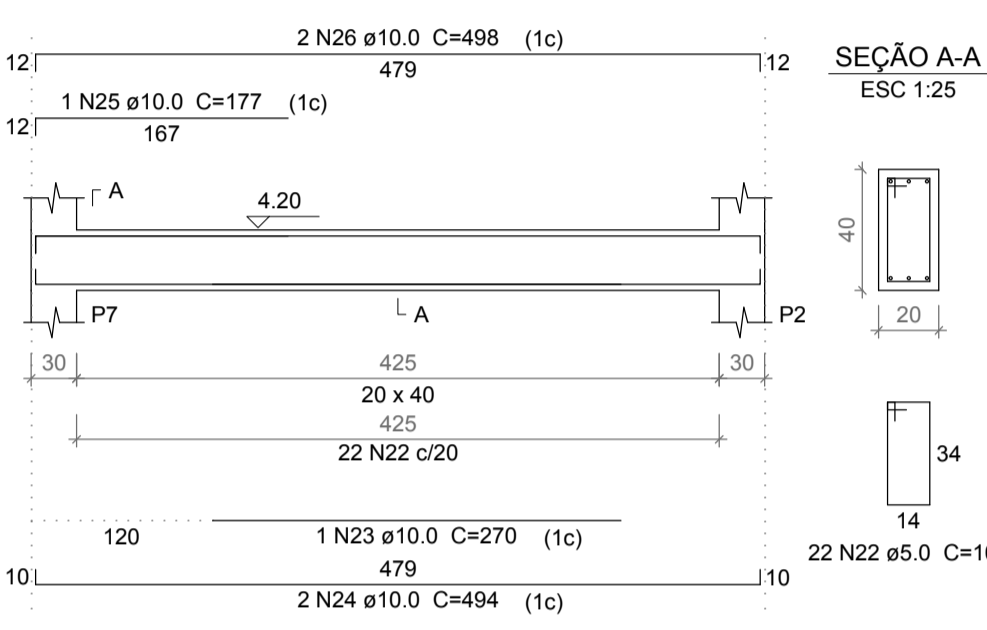
V1
ESC 1:50



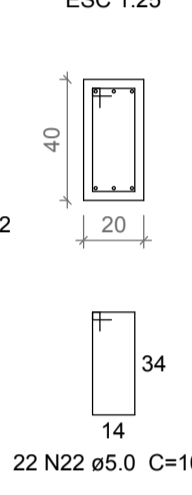
SEÇÃO A-A
ESC 1:25



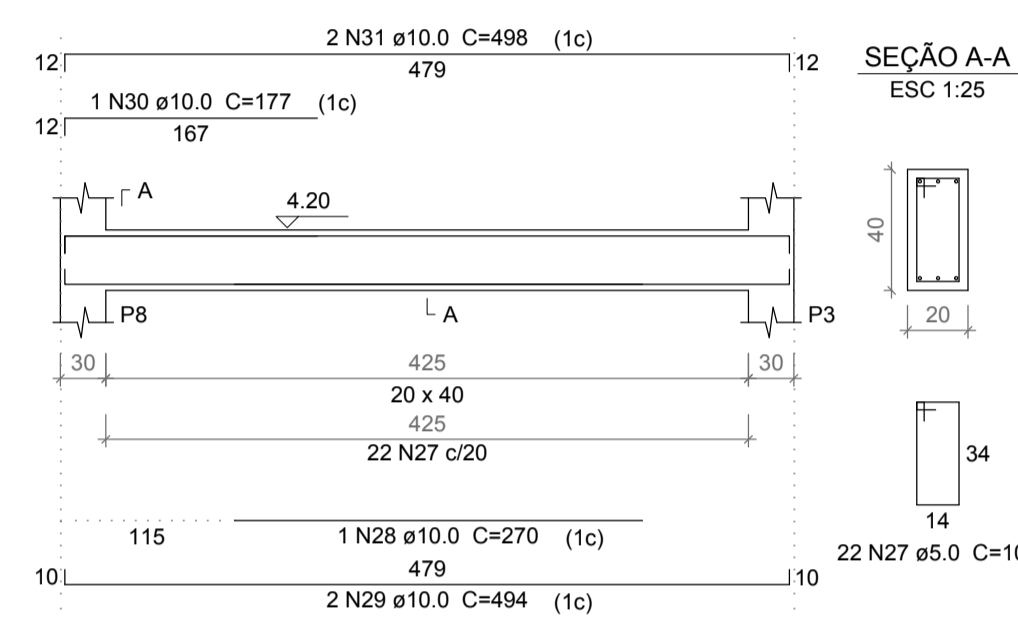
V3
ESC 1:50



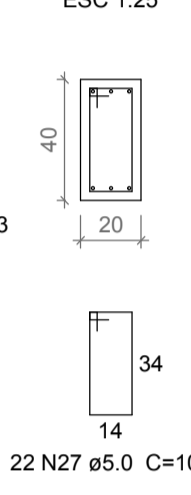
SEÇÃO A-A
ESC 1:25



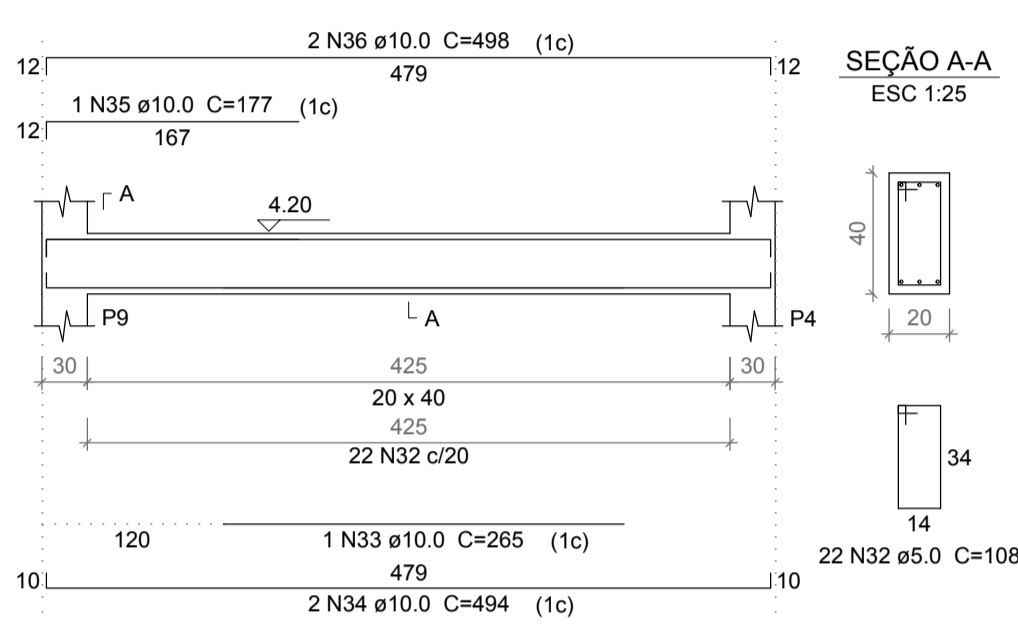
V4
ESC 1:50



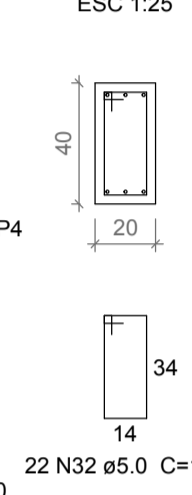
SEÇÃO A-A
ESC 1:25



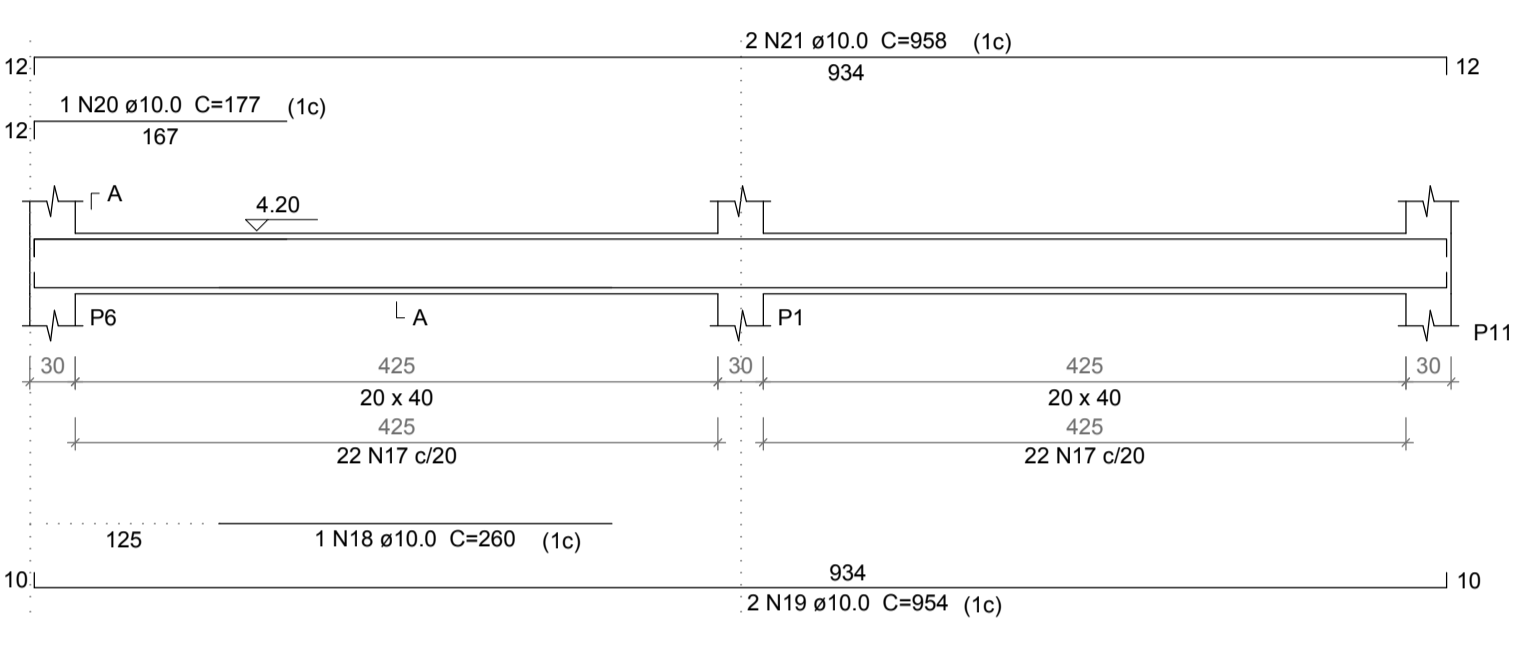
V5
ESC 1:50



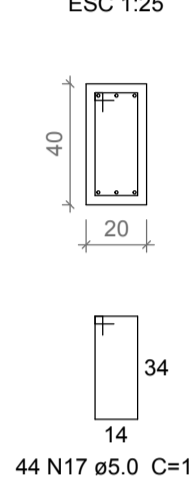
SEÇÃO A-A
ESC 1:25



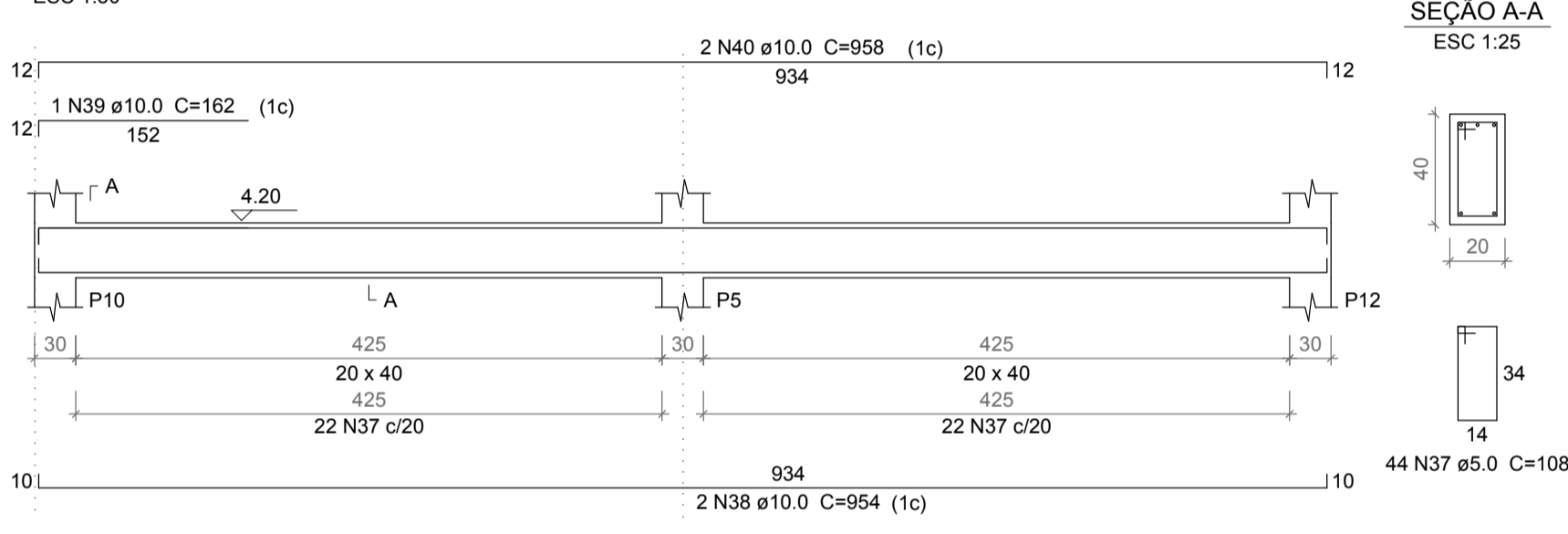
V2
ESC 1:50



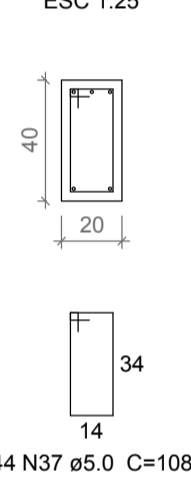
SEÇÃO A-A
ESC 1:25



V6
ESC 1:50



SEÇÃO A-A
ESC 1:25



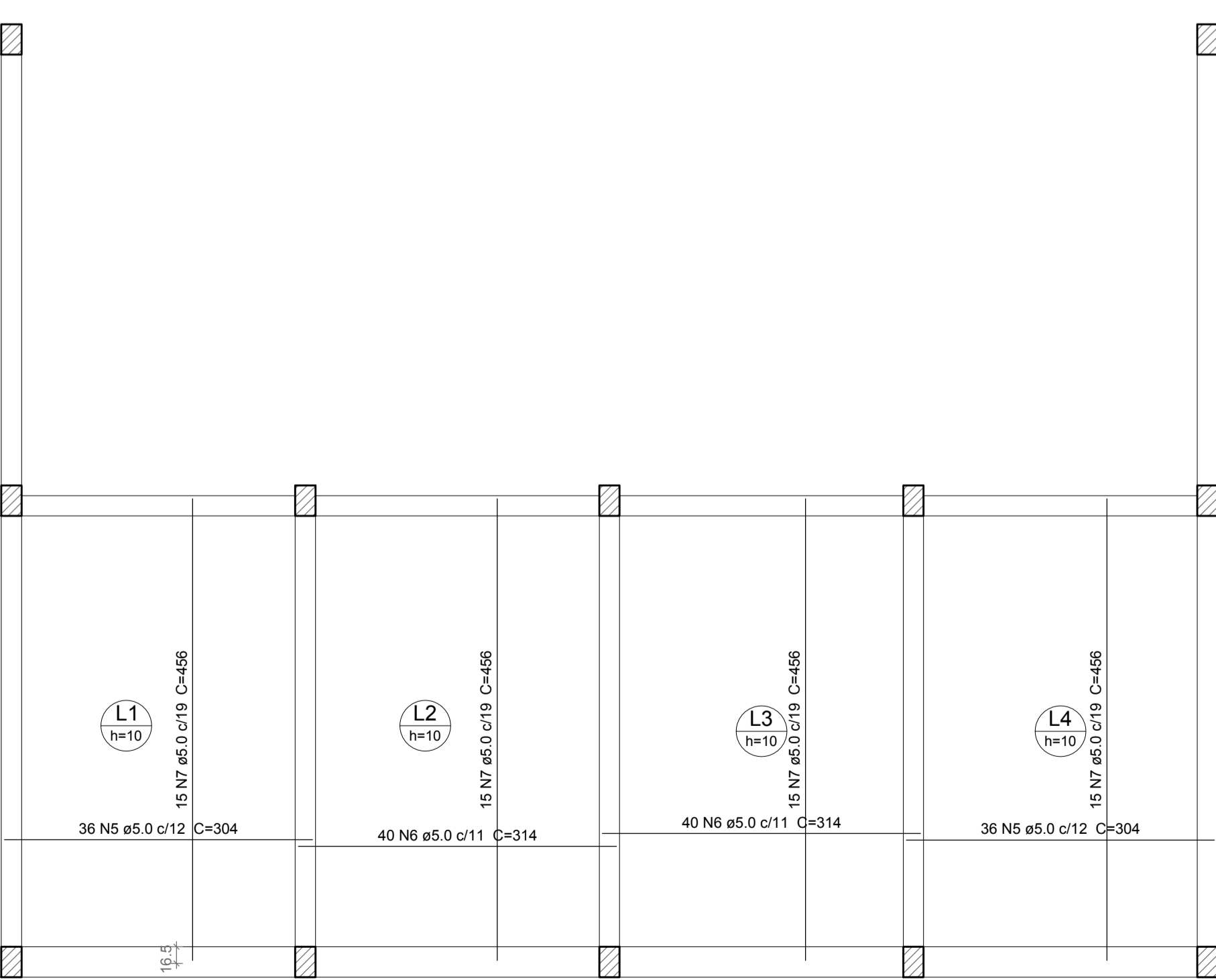
Relação do aço

ELEMENTO	AÇO	N	DIAM	Q	UNIT (cm)	C.TOTAL (cm)
Negativos X	CA60	1	5.0	105	122	12810
	CA60	2	5.0	70	73	5110
Negativos Y	CA60	3	5.0	90	73	6570
	CA60	4	5.0	90	83	7470
Positivos X	CA60	5	5.0	72	304	21888
	CA60	6	5.0	80	314	25120
Positivos Y	CA60	7	5.0	60	456	27360
	CA60	8	5.0	91	88	8008
	CA60	9	5.0	91	29	2639
	CA50	10	10.0	42	VAR	VAR
	CA50	11	10.0	84	137	11508
	CA60	12	5.0	56	107	5992
	CA50	13	10.0	2	1082	2164
	CA50	14	10.0	2	186	372
	CA50	15	10.0	2	1101	2302
	CA50	16	10.0	2	205	410
	CA60	17	5.0	44	108	4752
	CA50	18	10.0	1	260	260
	CA50	19	10.0	2	954	1908
	CA50	20	10.0	1	177	177
	CA50	21	10.0	2	958	1916
	CA60	22	5.0	22	108	2376
	CA50	23	10.0	1	270	270
	CA50	24	10.0	2	494	988
	CA50	25	10.0	1	177	177
	CA50	26	10.0	2	498	996
	CA60	27	5.0	22	108	2376
	CA50	28	10.0	1	270	270
	CA50	29	10.0	2	494	988
	CA50	30	10.0	1	177	177
	CA50	31	10.0	2	498	996
	CA60	32	5.0	22	108	2376
	CA50	33	10.0	1	265	265
	CA50	34	10.0	2	494	988
	CA50	35	10.0	1	177	177
	CA50	36	10.0	2	498	996
	CA60	37	5.0	44	108	4752
	CA50	38	10.0	2	954	1908
	CA50	39	10.0	1	162	162
	CA50	40	10.0	2	958	1916

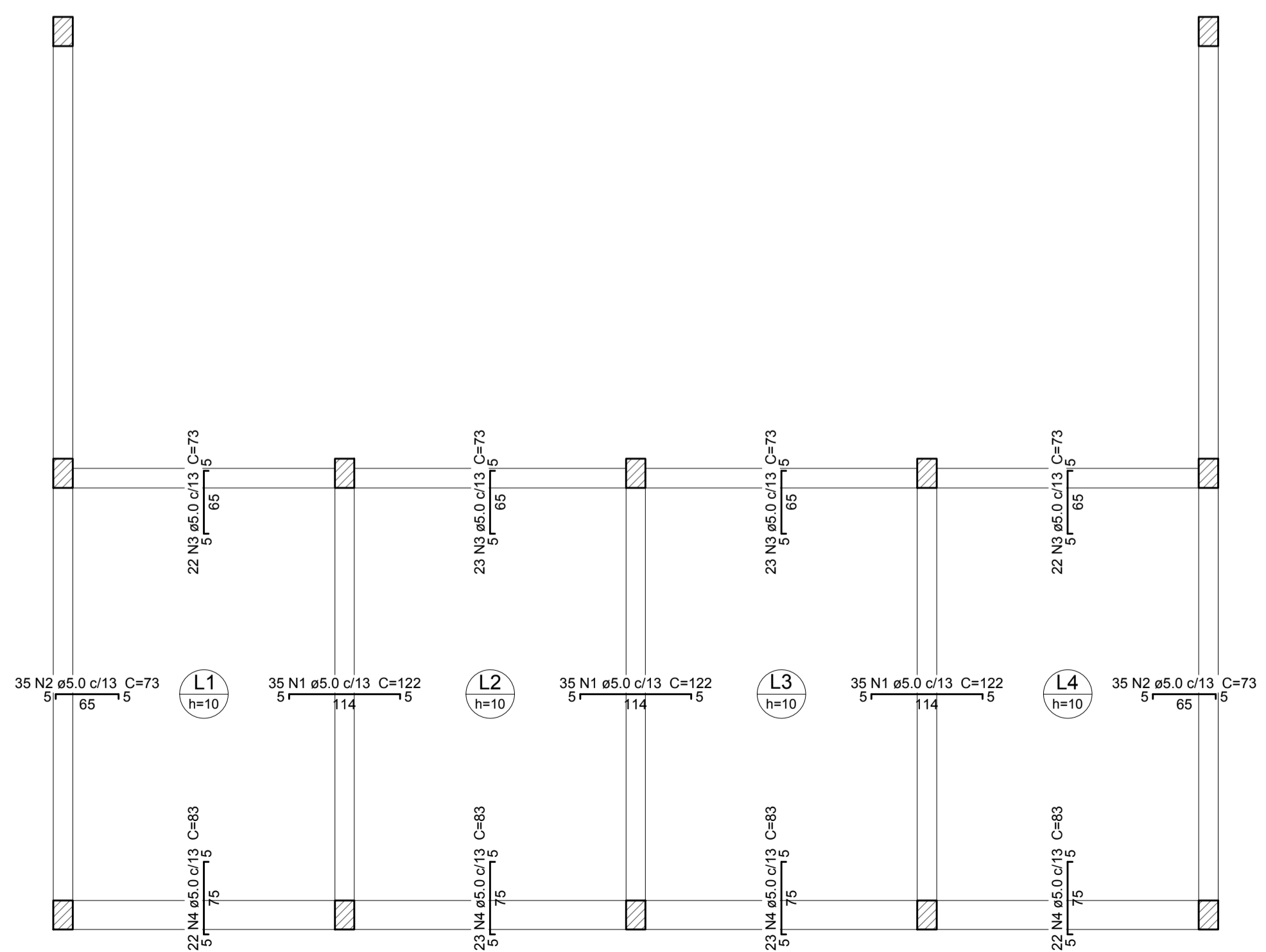
Resumo do aço

AÇO	DIAM	C.TOTAL (m)	PESO (kg)
CA50	10.0	409	252.35
CA60	5.0	1396	215
PESO TOTAL			
CA50		252.35	
CA60		215	

Vol. de concreto total (C-25) = 11,04 m³
Área de forma total = 41 m²



Armação positiva das lajes do pavimento Topo Muro
escala 1:50



Armação negativa das lajes do pavimento Topo Muro
escala 1:50



PREFEITURA DE MURIAÉ
SECRETARIA MUNICIPAL DE OBRAS PÚBLICAS
MURO DE ARRIMO CONCRETO ARMADO 4.2M
PROJETO ESTRUTURAL- MURO DE ARRIMO

PREFEITURA DE MURIAÉ / CNPJ: 17.947.581/0001-76	DETALHES DAS ARMADURAS E CORTES ESQUEMÁTICOS DA ESTRUTURA DO GALPÃO
PREFEITO MARCOS GUARINO DE OLIVEIRA	
SECRETARIA MUNICIPAL DE OBRAS PÚBLICAS:	LOCAL: Rua Cândido dos Santos Tureta, bairro Colety, Muriaé-MG
SECRETÁRIO JORGE FERES FILHO	
R. T. PROJETO:	ARQUIVO: Muro de arrimo ETE.dwg
ENG. ARLAN DO CARMO MENDONÇA/CREA-MG Nº 177324-D	DATA: 15/07/2022 ESC: INDICADAS